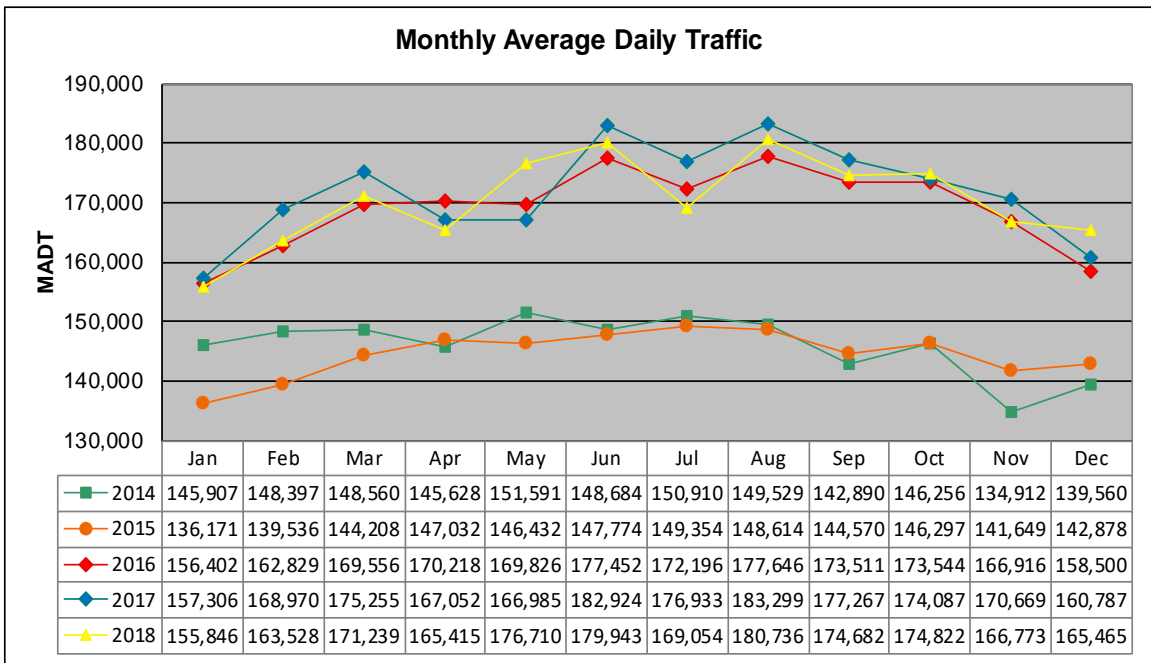


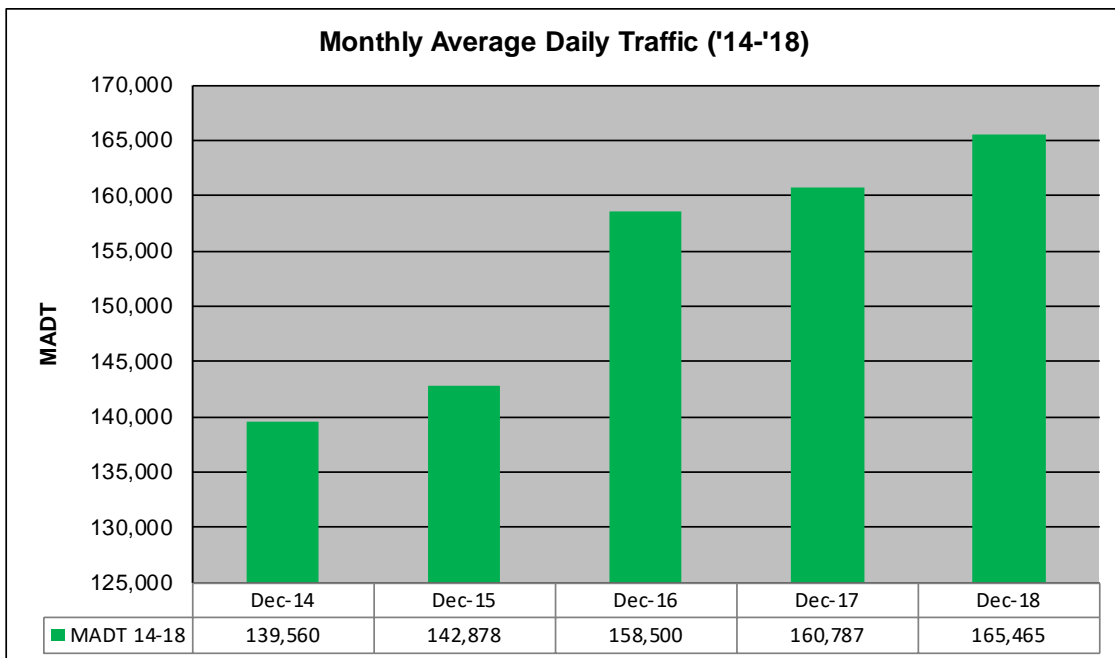
MONTHLY REPORT, STATION NO. 321 (ATR)

DECEMBER 2018

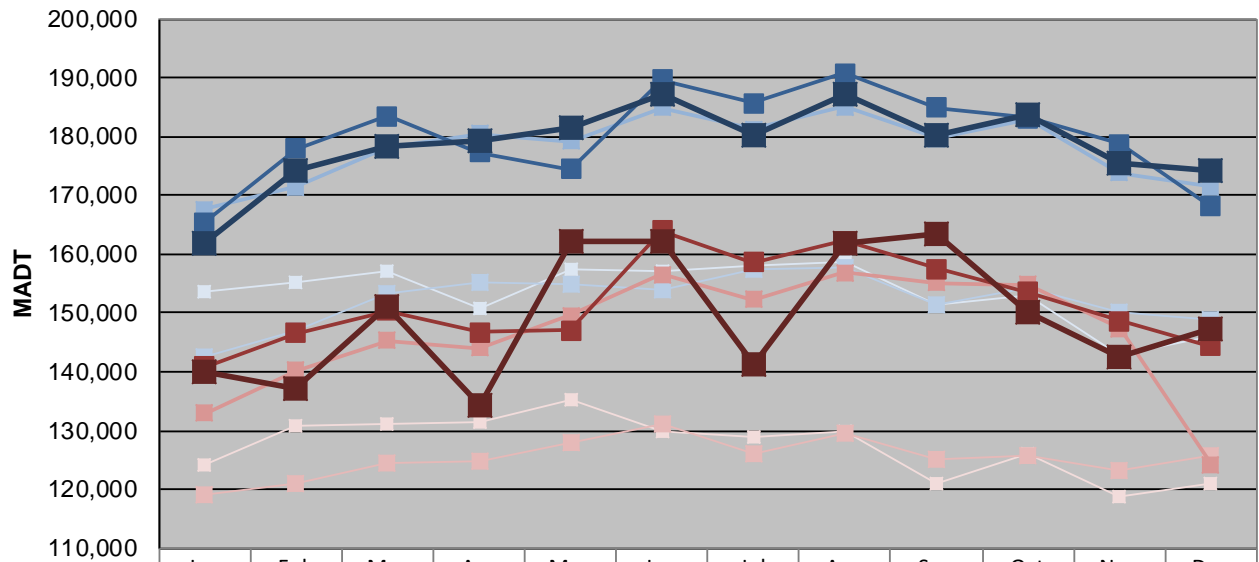
| | | |
|---|----------------------|--------------------------------------|
| Station Measurement: VOLUME | | |
| Route: I-494 | Route Direction: E/W | Lanes: 6 |
| County: Hennepin | | Closest City: Bloomington |
| Functional Class: Urban Principal Arterial - Interstate | | |
| Location: W OF I-35W IN BLOOMINGTON | | |
| Ref Post: 005+00.600 | True Mile: 5.605 | Sequence No. 9846 |
| Volume: 5,129,406 | | MADT: 165,465 |
| Weekday (M-F) MADT: 174,089 | | Weekend (Sa-Su) MADT: 147,354 |



Note: Decrease in traffic March to July 2014, and April/May 2017 due to construction on I-494



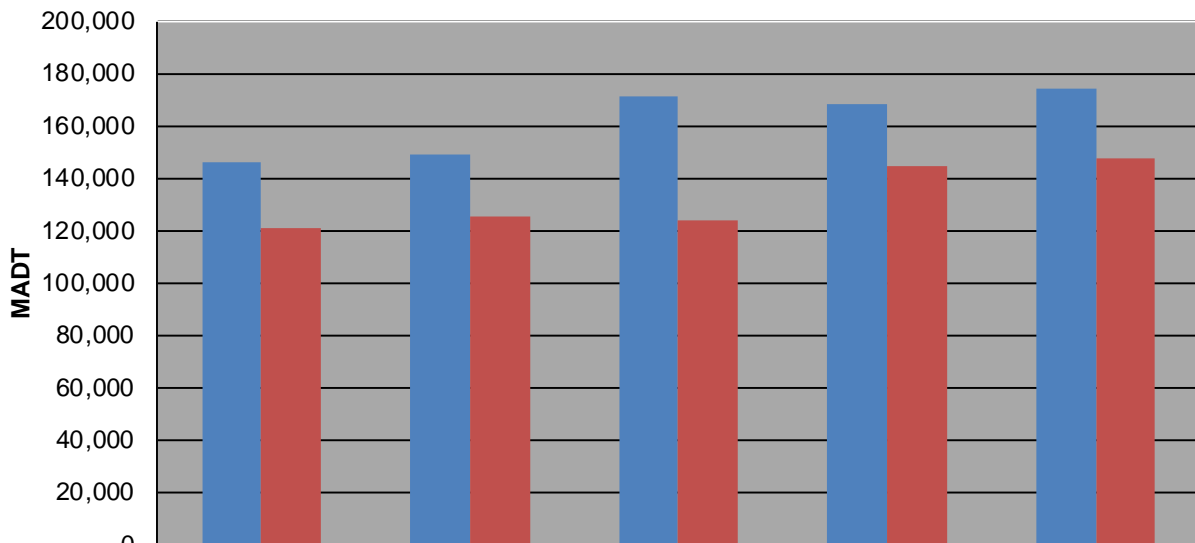
Weekday (WD)/Weekend (WE) Monthly Average Daily Traffic



| | Jan | Feb | Mar | Apr | May | Jun | Jul | Aug | Sep | Oct | Nov | Dec |
|--------|---------|---------|---------|---------|---------|---------|---------|---------|---------|---------|---------|---------|
| '14 WD | 153,772 | 155,366 | 157,114 | 150,698 | 157,518 | 157,182 | 158,004 | 158,658 | 151,282 | 153,008 | 142,990 | 145,902 |
| '14 WE | 124,042 | 130,980 | 131,212 | 131,582 | 135,246 | 129,864 | 128,838 | 129,966 | 121,138 | 126,226 | 118,760 | 121,108 |
| '15 WD | 142,686 | 146,918 | 153,428 | 155,110 | 154,924 | 154,052 | 157,350 | 157,822 | 151,492 | 154,150 | 150,290 | 148,780 |
| '15 WE | 119,220 | 121,084 | 124,412 | 124,800 | 127,984 | 131,062 | 126,002 | 129,504 | 125,086 | 125,792 | 123,292 | 125,714 |
| '16 WD | 167,638 | 171,522 | 178,226 | 180,398 | 179,140 | 184,870 | 181,322 | 185,042 | 179,680 | 182,784 | 173,900 | 171,456 |
| '16 WE | 133,004 | 140,180 | 145,256 | 144,076 | 149,606 | 156,592 | 152,218 | 156,816 | 155,140 | 154,868 | 147,376 | 124,202 |
| '17 WD | 165,450 | 177,900 | 183,554 | 177,232 | 174,408 | 189,594 | 185,746 | 190,718 | 184,930 | 183,126 | 178,734 | 168,138 |
| '17 WE | 140,842 | 146,646 | 150,342 | 146,694 | 147,054 | 163,988 | 158,548 | 162,264 | 157,528 | 153,554 | 148,612 | 144,372 |
| '18 WD | 161,876 | 174,070 | 178,336 | 179,308 | 181,632 | 187,058 | 180,196 | 187,052 | 180,278 | 183,848 | 175,613 | 174,089 |
| '18 WE | 140,136 | 137,172 | 151,004 | 134,330 | 162,202 | 162,098 | 141,192 | 161,854 | 163,492 | 150,268 | 142,462 | 147,354 |

Note: 'Weekday' defined as Monday-Friday, 'Weekend' defined as Saturday-Sunday

Weekday/Weekend Monthly Average Daily Traffic ('14-'18)



| | Dec-14 | Dec-15 | Dec-16 | Dec-17 | Dec-18 |
|---------|---------|---------|---------|---------|---------|
| Weekday | 145,902 | 148,780 | 171,456 | 168,138 | 174,089 |
| Weekend | 121,108 | 125,714 | 124,202 | 144,372 | 147,354 |