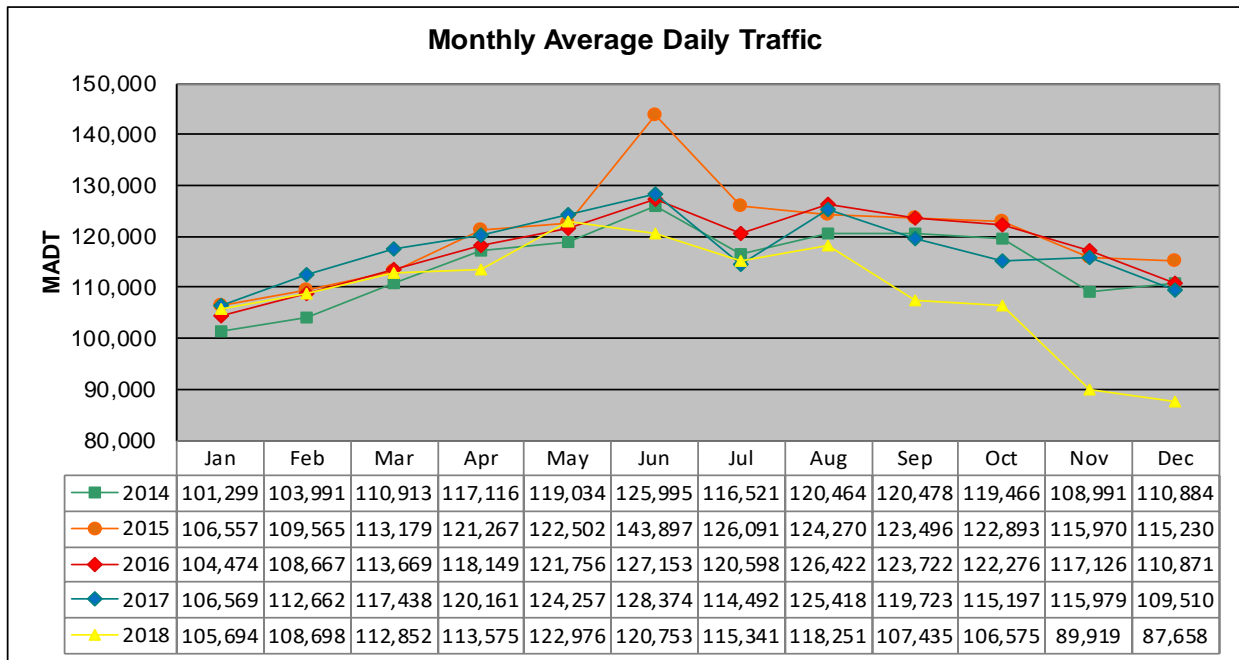


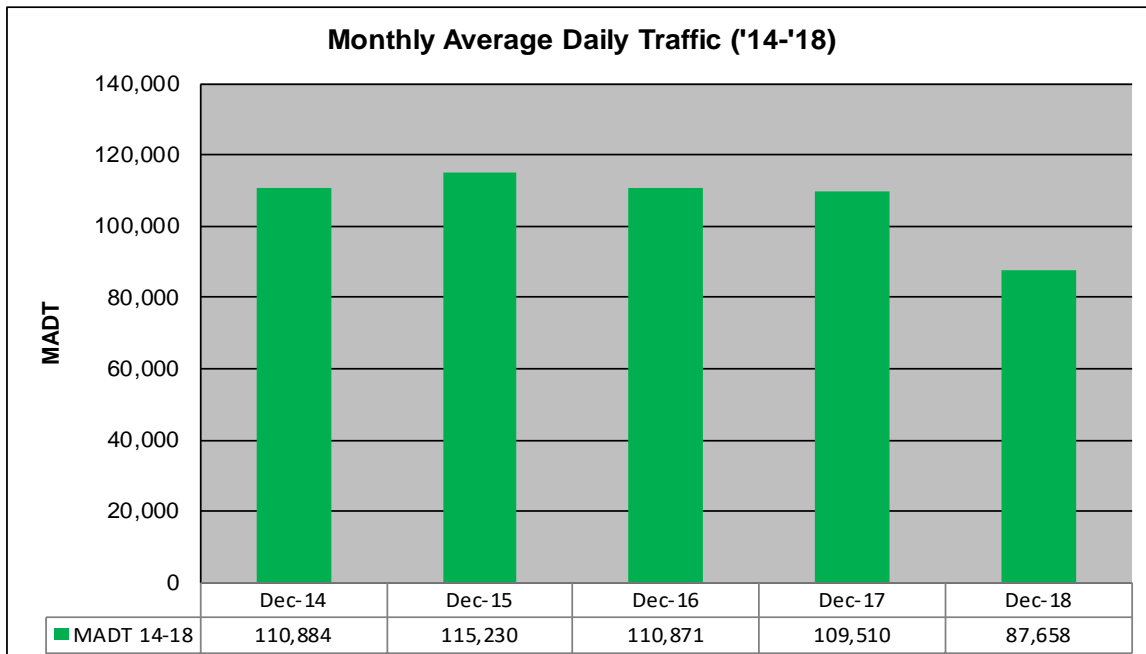
MONTHLY REPORT, STATION NO. 315 (ATR)

DECEMBER 2018

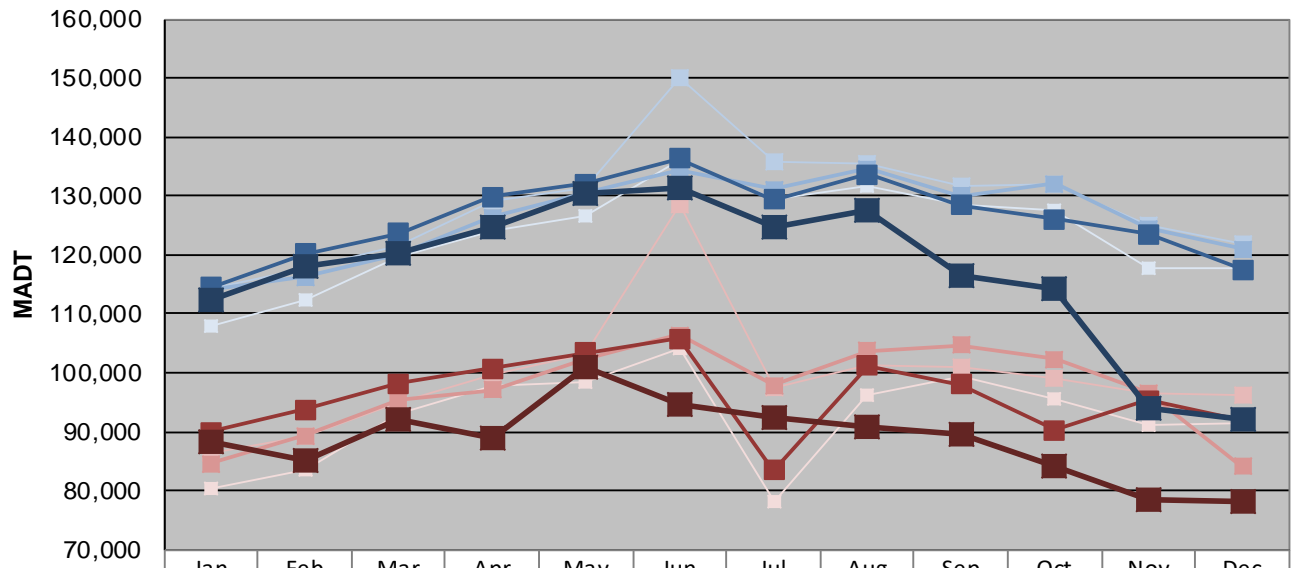
| | | |
|---|----------------------|-------------------------------------|
| Station Measurement: VOLUME | | |
| Route: I-35W | Route Direction: N/S | Lanes: 6 |
| County: Hennepin | | Closest City: Bloomington |
| Functional Class: Urban Principal Arterial - Interstate | | |
| Location: N OF MN RIVER BRIDGE IN BLOOMINGTON | | |
| Ref Post: 004+00.500 | True Mile: 4.55 | Sequence No. 9843 |
| Volume: 2,717,408 | | MADT: 87,658 |
| Weekday (M-F) MADT: 92,179 | | Weekend (Sa-Su) MADT: 78,166 |



Note: Increase in traffic June 2015 due to detours... Decrease in traffic August to December 2018 due to construction on I-35W



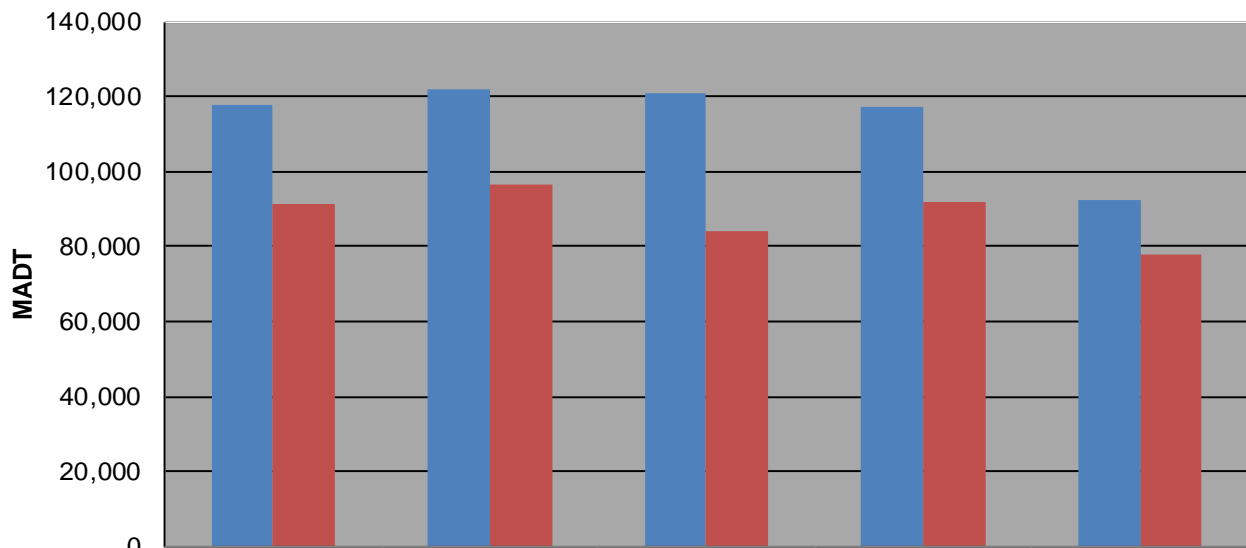
Weekday (WD)/Weekend (WE) Monthly Average Daily Traffic



| | Jan | Feb | Mar | Apr | May | Jun | Jul | Aug | Sep | Oct | Nov | Dec |
|--------|---------|---------|---------|---------|---------|---------|---------|---------|---------|---------|---------|---------|
| '14 WD | 108,020 | 112,210 | 119,784 | 124,124 | 126,566 | 136,052 | 129,416 | 131,814 | 128,674 | 127,480 | 117,880 | 117,622 |
| '14 WE | 80,430 | 83,444 | 92,956 | 97,924 | 98,366 | 104,160 | 78,096 | 96,256 | 99,436 | 95,658 | 91,212 | 91,600 |
| '15 WD | 114,400 | 117,646 | 121,678 | 129,034 | 131,262 | 149,908 | 135,754 | 135,452 | 131,570 | 131,954 | 124,998 | 121,736 |
| '15 WE | 86,380 | 89,364 | 94,860 | 99,782 | 103,206 | 128,626 | 97,626 | 101,320 | 100,970 | 98,960 | 96,500 | 96,292 |
| '16 WD | 114,062 | 116,192 | 120,224 | 126,388 | 130,602 | 134,452 | 131,064 | 134,546 | 130,030 | 132,034 | 124,430 | 120,950 |
| '16 WE | 84,510 | 89,404 | 95,324 | 97,062 | 102,396 | 106,426 | 97,820 | 103,730 | 104,702 | 102,336 | 96,608 | 84,094 |
| '17 WD | 114,452 | 120,226 | 123,698 | 129,848 | 132,118 | 136,304 | 129,454 | 133,734 | 128,362 | 125,988 | 123,480 | 117,442 |
| '17 WE | 90,004 | 93,752 | 98,262 | 100,788 | 103,472 | 105,722 | 83,538 | 101,226 | 97,990 | 90,222 | 95,298 | 92,030 |
| '18 WD | 112,286 | 118,090 | 120,340 | 124,686 | 130,382 | 131,434 | 124,770 | 127,472 | 116,424 | 114,414 | 94,059 | 92,179 |
| '18 WE | 88,288 | 85,220 | 92,012 | 88,910 | 100,870 | 94,652 | 92,510 | 90,982 | 89,456 | 84,318 | 78,534 | 78,166 |

Note: 'Weekday' defined as Monday-Friday, 'Weekend' defined as Saturday-Sunday

Weekday/Weekend Monthly Average Daily Traffic ('14-'18)



| | Dec-14 | Dec-15 | Dec-16 | Dec-17 | Dec-18 |
|---------|---------|---------|---------|---------|--------|
| Weekday | 117,622 | 121,736 | 120,950 | 117,442 | 92,179 |
| Weekend | 91,600 | 96,292 | 84,094 | 92,030 | 78,166 |