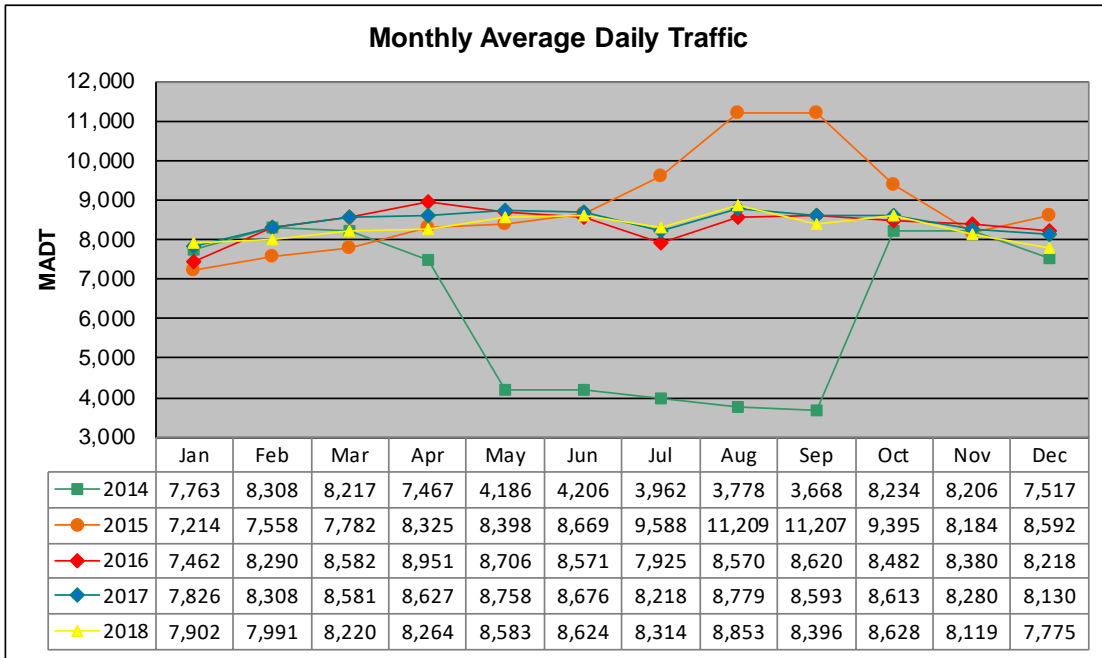


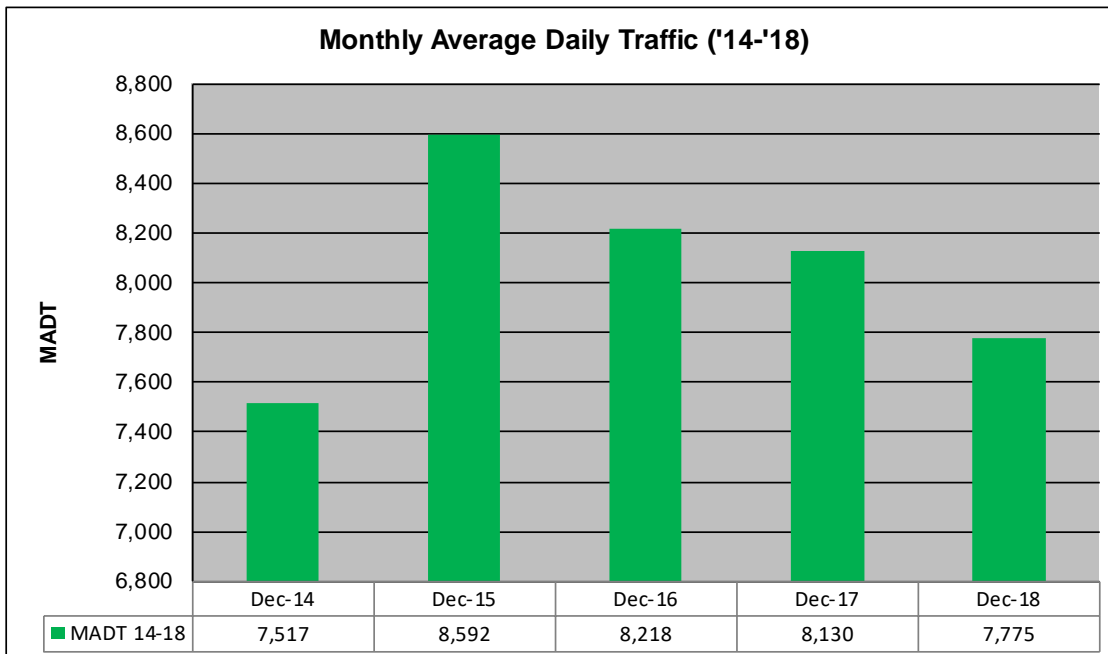
MONTHLY REPORT, STATION NO. 28 (ATR)

DECEMBER 2018

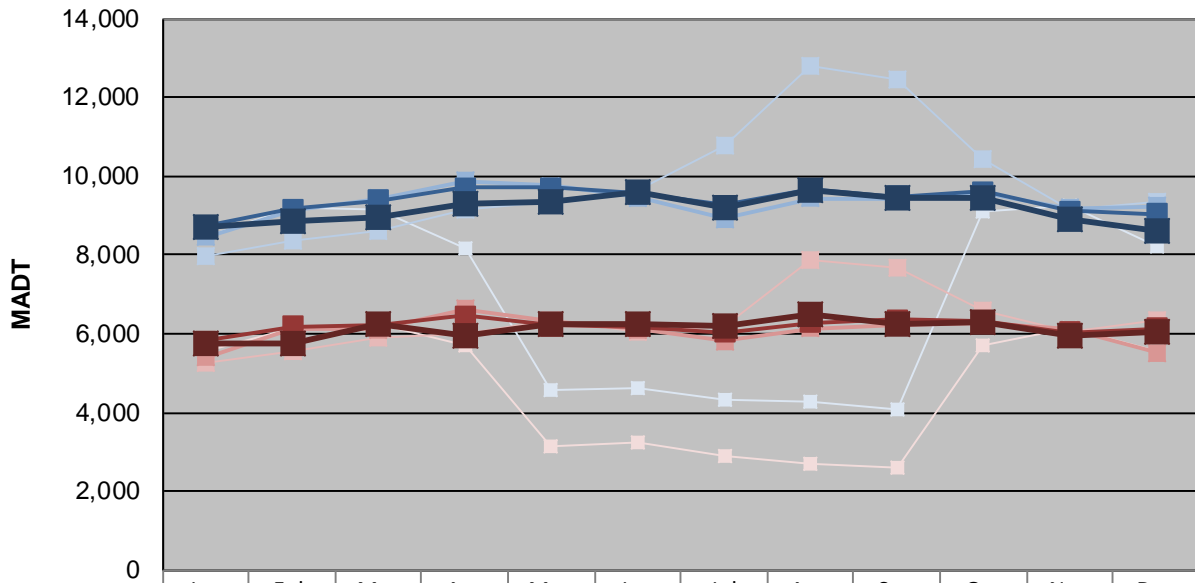
Station Measurement: VOLUME/SPEED/CLASS		
Route: MSAS 114	Route Direction: E/W	Lanes: 2
County: Stearns	Closest City: St Cloud	
Functional Class: Urban Minor Arterial		
Location: W OF 20TH AVE N IN ST CLOUD		
Ref Post: 000+00.750	True Mile: 0.75	Sequence No. 22993
Volume: 241,035		MADT: 7,775
Weekday (M-F) MADT: 8,604		Weekend (Sa-Su) MADT: 6,036



Note: Decrease in traffic April to September 2014 due to construction on TH 15



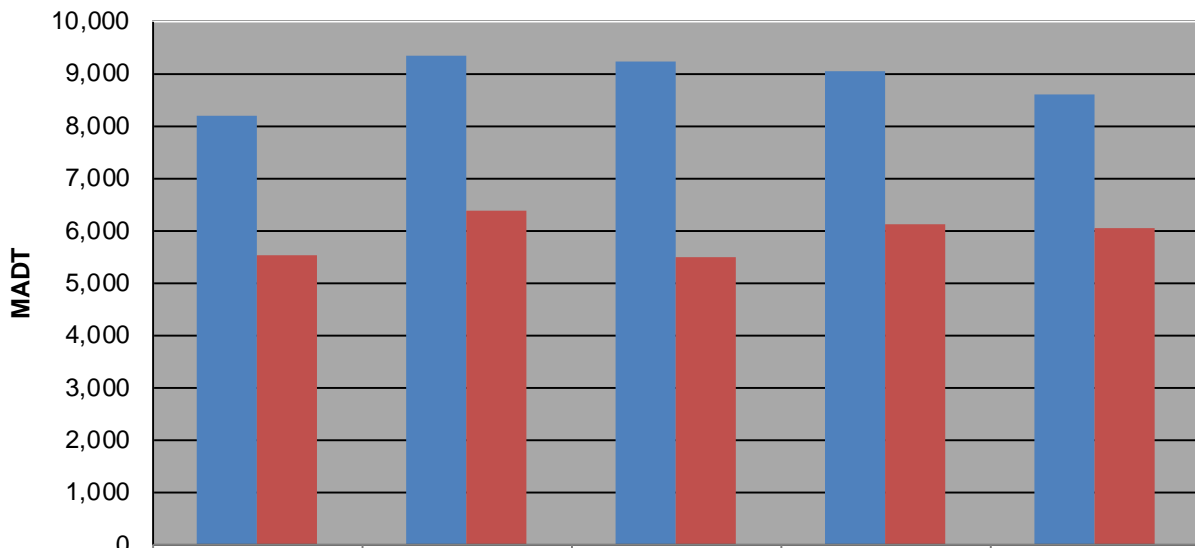
Weekday (WD)/Weekend (WE) Monthly Average Daily Traffic



	Jan	Feb	Mar	Apr	May	Jun	Jul	Aug	Sep	Oct	Nov	Dec
'14 WD	8,452	9,182	9,162	8,150	4,564	4,636	4,340	4,288	4,064	9,080	9,230	8,200
'14 WE	5,576	6,126	6,246	5,704	3,156	3,224	2,874	2,688	2,594	5,728	6,158	5,542
'15 WD	7,960	8,352	8,616	9,166	9,340	9,632	10,754	12,792	12,474	10,450	9,142	9,354
'15 WE	5,274	5,574	5,890	5,998	6,338	6,064	6,172	7,894	7,676	6,602	6,032	6,366
'16 WD	8,456	9,134	9,444	9,868	9,758	9,448	8,906	9,436	9,442	9,558	9,184	9,234
'16 WE	5,392	6,128	6,100	6,632	6,314	6,122	5,810	6,124	6,226	6,248	6,100	5,508
'17 WD	8,732	9,158	9,374	9,714	9,694	9,558	9,262	9,646	9,478	9,616	9,120	9,032
'17 WE	5,812	6,186	6,238	6,452	6,200	6,190	6,044	6,288	6,354	6,302	6,026	6,136
'18 WD	8,688	8,876	8,944	9,316	9,364	9,610	9,184	9,658	9,462	9,466	8,912	8,604
'18 WE	5,742	5,776	6,248	5,940	6,258	6,234	6,190	6,498	6,266	6,288	5,935	6,036

Note: 'Weekday' defined as Monday-Friday, 'Weekend' defined as Saturday-Sunday

Weekday/Weekend Monthly Average Daily Traffic ('14-'18)



	Dec-14	Dec-15	Dec-16	Dec-17	Dec-18
Weekday	8,200	9,354	9,234	9,032	8,604
Weekend	5,542	6,366	5,508	6,136	6,036