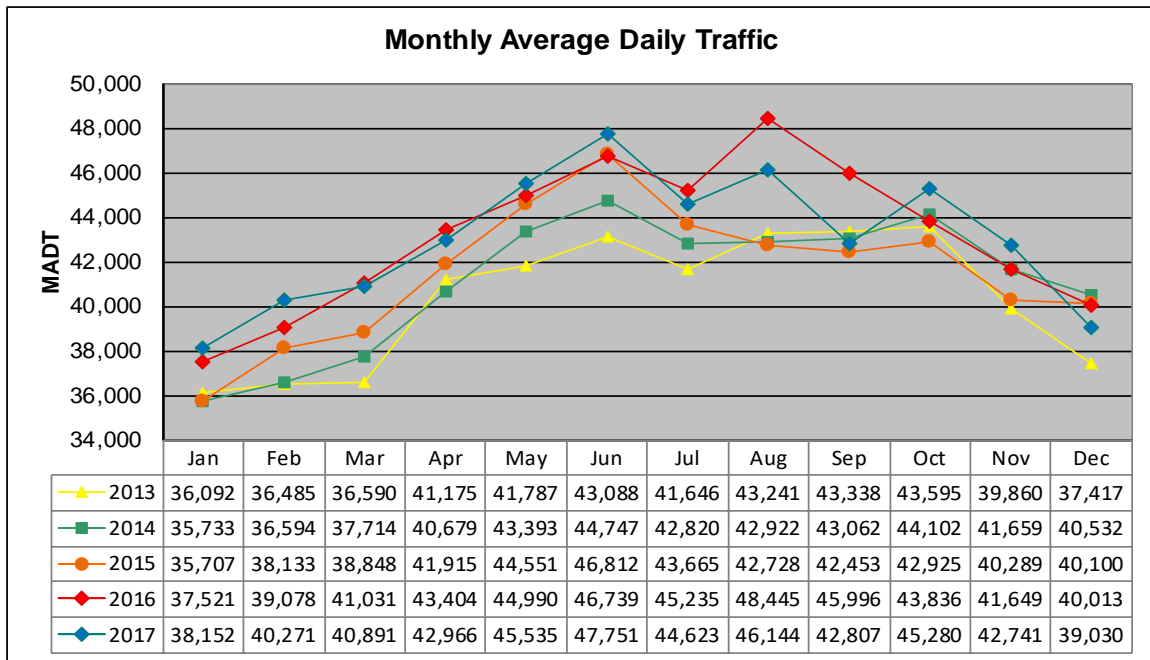


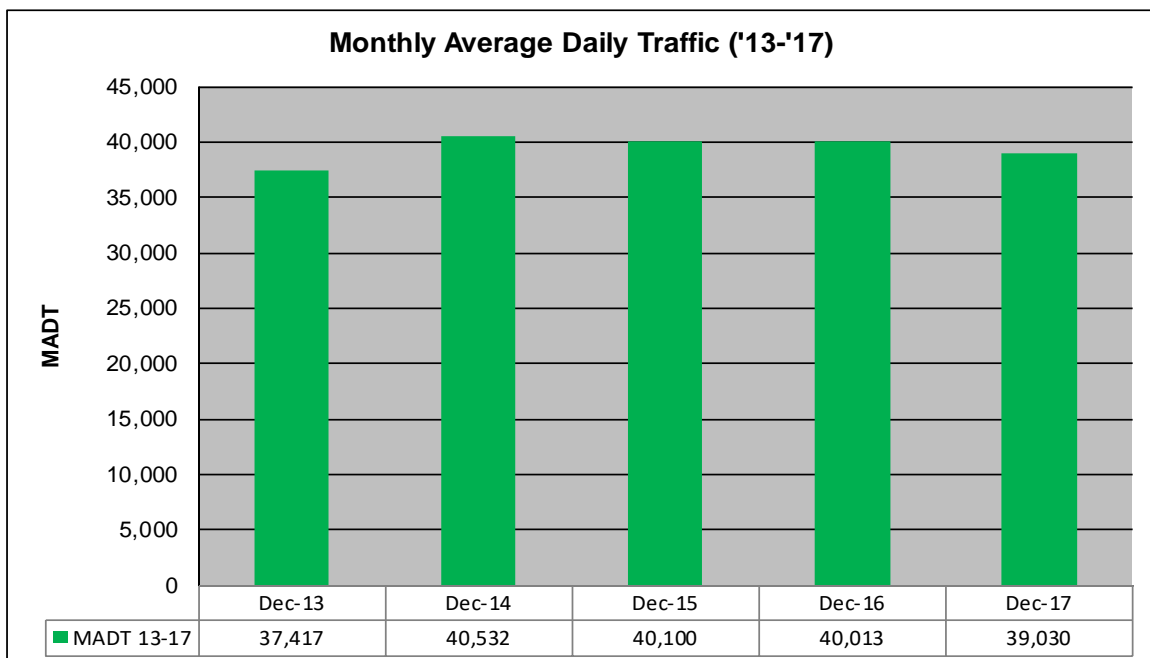
MONTHLY REPORT, STATION NO. 365 (ATR)

DECEMBER 2017

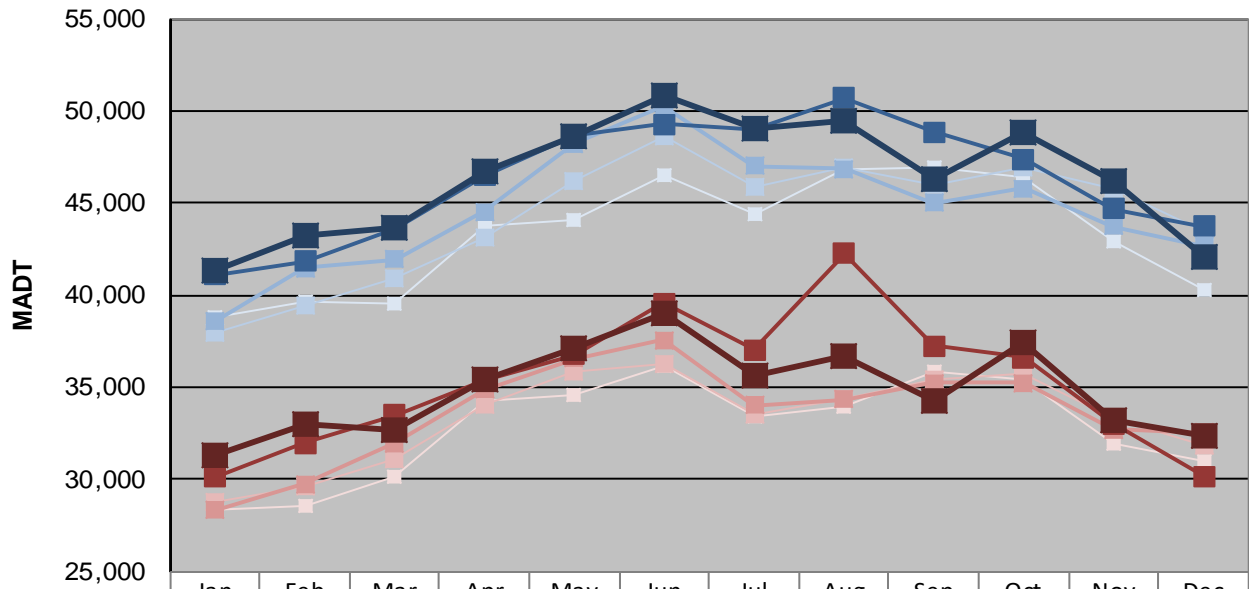
Station Measurement: VOLUME/SPEED/CLASS		
Route: TH 65	Route Direction: N/S	Lanes: 4
County: Anoka		Closest City: Ham Lake
Functional Class: Urban Other Principal Arterial		
Location: S OF CSAH116 (BUNKER LAKE BLVD NE) IN HAM LAKE		
Ref Post: 016+00.720	True Mile: 18.577	Sequence No. 9867
Volume: 1,209,935		MADT: 39,030
Weekday (M-F) MADT: 39,030		Weekend (Sa-Su) MADT: 32,372



Note: Increase in traffic August/September 2016 due to detours



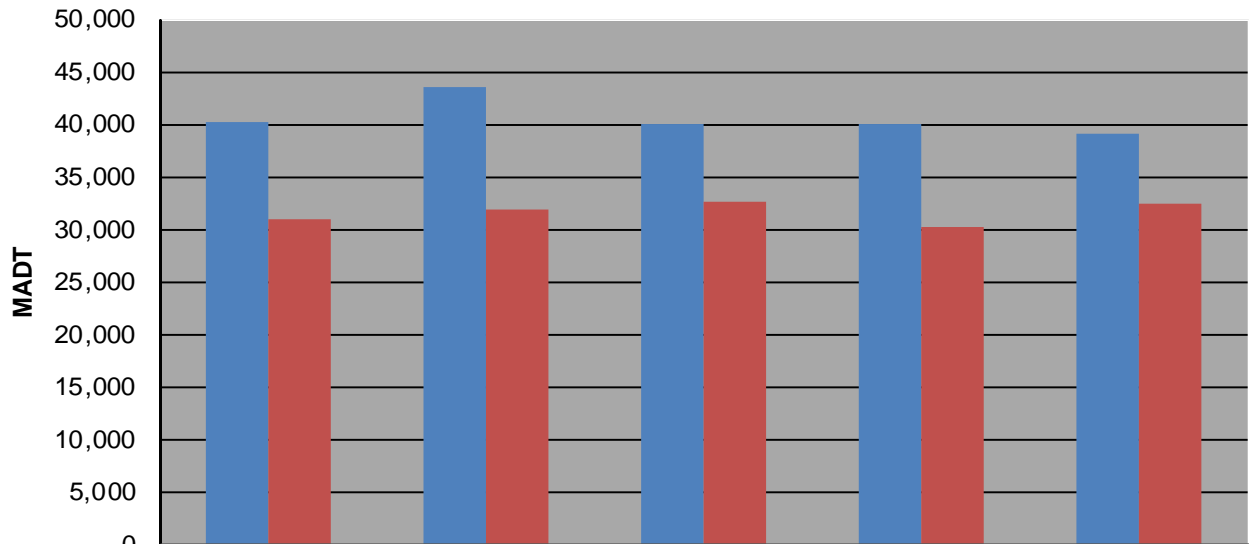
Weekday (WD)/Weekend (WE) Monthly Average Daily Traffic



	Jan	Feb	Mar	Apr	May	Jun	Jul	Aug	Sep	Oct	Nov	Dec
'13 WD	38,854	39,654	39,534	43,716	44,136	46,530	44,352	46,848	46,942	46,436	42,974	40,272
'13 WE	28,312	28,562	30,138	34,284	34,560	36,206	33,426	33,990	35,826	35,472	31,970	30,966
'14 WD	37,996	39,402	40,922	43,082	46,176	48,608	45,874	46,948	46,004	46,900	45,810	43,474
'14 WE	28,806	29,578	31,096	34,092	35,820	36,318	33,534	34,400	35,466	35,738	33,356	31,844
'15 WD	38,576	41,488	41,940	44,534	48,224	50,250	47,004	46,834	45,030	45,818	43,760	42,660
'15 WE	28,316	29,746	31,970	34,860	36,550	37,586	34,048	34,332	35,264	35,266	32,686	32,572
'16 WD	41,108	41,842	43,654	46,504	48,664	49,298	49,020	50,700	48,846	47,394	44,676	43,724
'16 WE	30,116	31,976	33,514	35,388	36,764	39,560	37,024	42,250	37,244	36,604	33,024	30,170
'17 WD	41,326	43,198	43,652	46,718	48,636	50,870	49,040	49,484	46,260	48,782	46,144	42,092
'17 WE	31,312	32,956	32,654	35,462	37,078	38,968	35,640	36,744	34,272	37,426	33,194	32,372

Note: 'Weekday' defined as Monday-Friday, 'Weekend' defined as Saturday-Sunday

Weekday/Weekend Monthly Average Daily Traffic ('13-'17)



	Dec-13	Dec-14	Dec-15	Dec-16	Dec-17
Weekday	40,272	43,474	40,100	40,013	39,030
Weekend	30,966	31,844	32,572	30,170	32,372