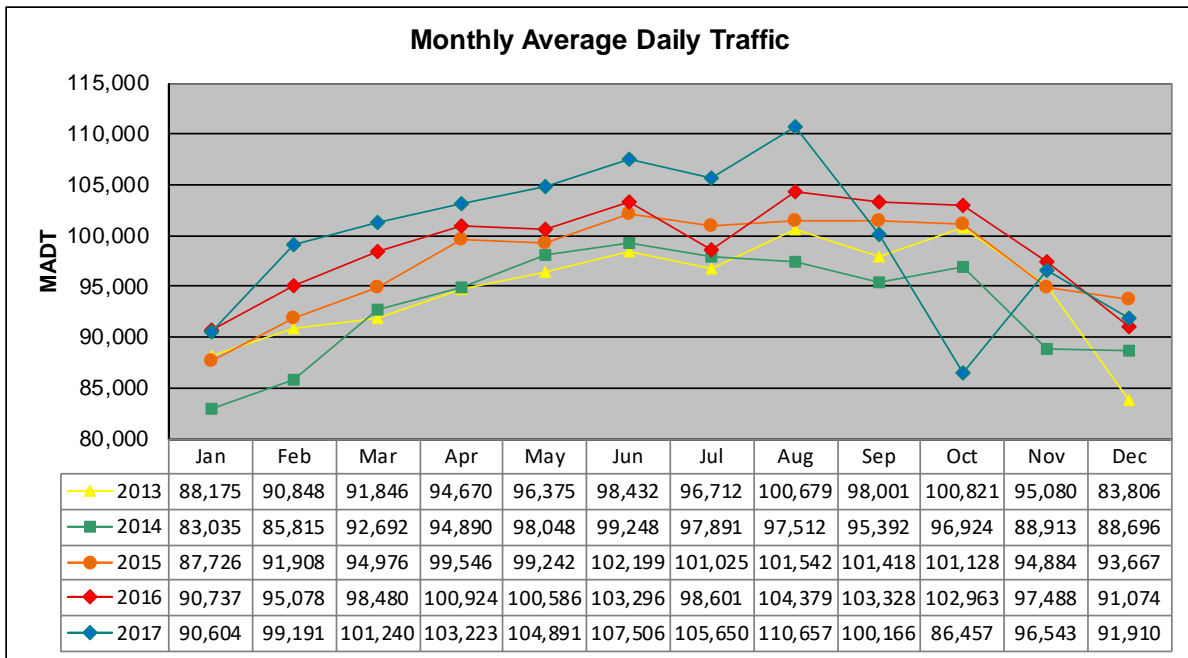


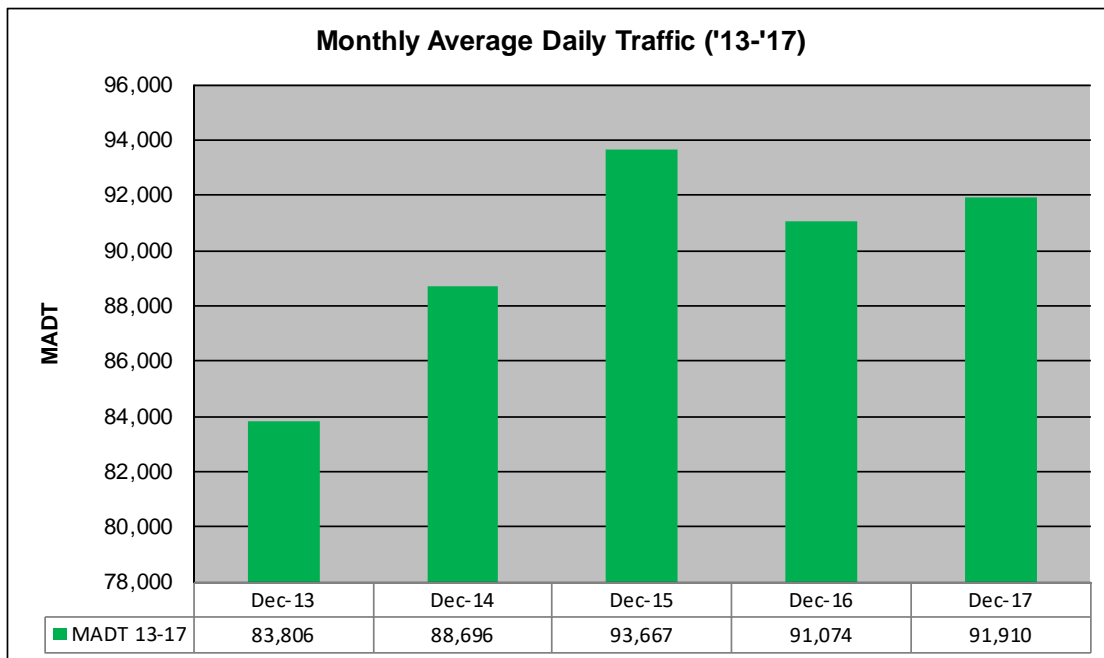
MONTHLY REPORT, STATION NO. 329 (ATR)

DECEMBER 2017

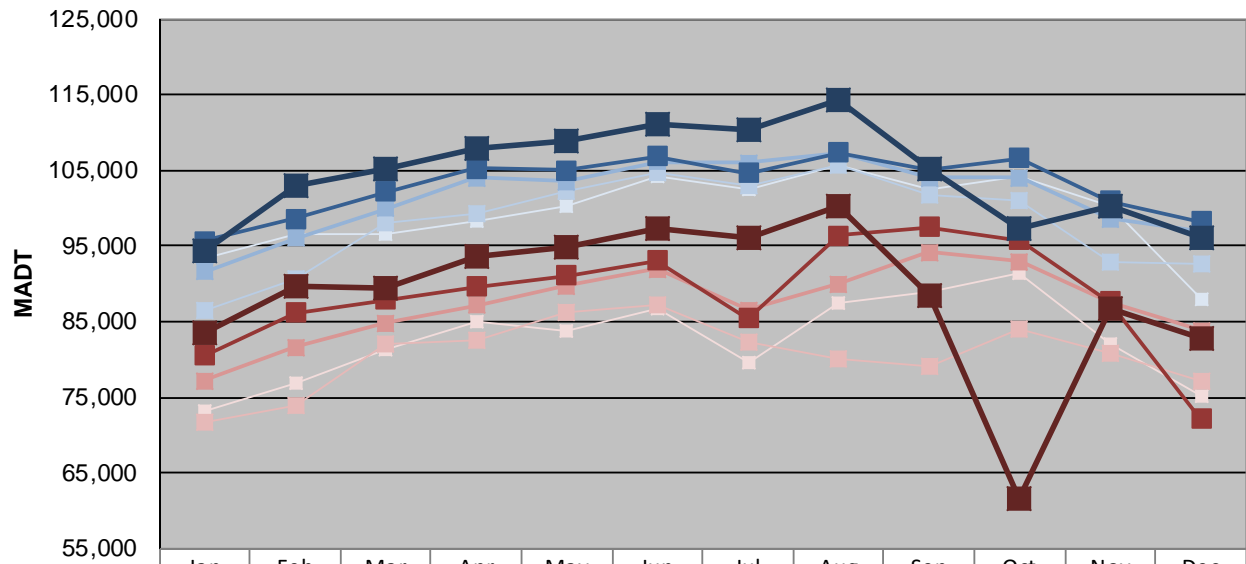
Station Measurement: VOLUME		
Route: I-35W	Route Direction: N/S	Lanes: 4
County: Hennepin		Closest City: Minneapolis
Functional Class: Urban Principal Arterial - Interstate		
Location: AT FRANKLIN AVE IN MINNEAPOLIS		
Ref Post: 016+00.680	True Mile: 16.713	Sequence No. 9851
Volume: 2,849,224		MADT: 91,910
Weekday (M-F) MADT: 91,910		Weekend (Sa-Su) MADT: 82,704



Note: Decrease in traffic October 2017 due to construction on I-35W



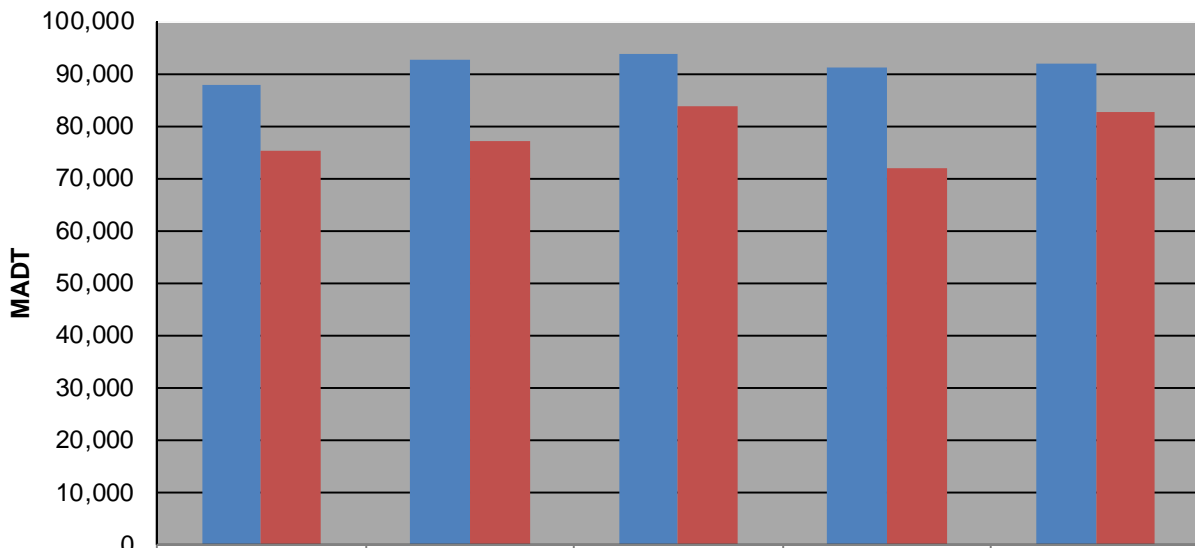
Weekday (WD)/Weekend (WE) Monthly Average Daily Traffic



	Jan	Feb	Mar	Apr	May	Jun	Jul	Aug	Sep	Oct	Nov	Dec
'13 WD	93,434	96,456	96,588	98,236	100,370	104,238	102,390	105,602	102,424	104,124	100,152	87,968
'13 WE	73,206	76,828	81,260	84,934	83,728	86,820	79,688	87,538	89,030	91,458	82,126	75,158
'14 WD	86,534	90,586	97,976	99,394	102,174	104,746	102,966	105,734	101,664	101,122	92,926	92,598
'14 WE	71,786	73,892	82,138	82,412	86,224	87,332	82,276	79,974	79,052	84,042	80,890	77,220
'15 WD	91,600	96,040	99,948	103,972	103,512	106,058	105,992	107,168	103,978	103,962	98,556	96,978
'15 WE	77,238	81,582	84,784	87,202	89,756	91,934	86,598	90,022	94,128	92,982	87,586	83,792
'16 WD	95,636	98,574	102,178	105,234	105,034	106,860	104,696	107,348	105,122	106,634	100,922	98,178
'16 WE	80,506	86,174	87,878	89,664	91,140	93,032	85,406	96,344	97,528	95,818	87,654	72,076
'17 WD	94,332	103,030	105,070	108,024	108,786	111,058	110,344	114,302	105,196	97,370	100,170	95,996
'17 WE	83,562	89,596	89,462	93,624	94,782	97,422	96,052	100,224	88,398	61,628	86,624	82,704

Note: 'Weekday' defined as Monday-Friday, 'Weekend' defined as Saturday-Sunday

Weekday/Weekend Monthly Average Daily Traffic ('13-'17)



	Dec-13	Dec-14	Dec-15	Dec-16	Dec-17
Weekday	87,968	92,598	93,667	91,074	91,910
Weekend	75,158	77,220	83,792	72,076	82,704