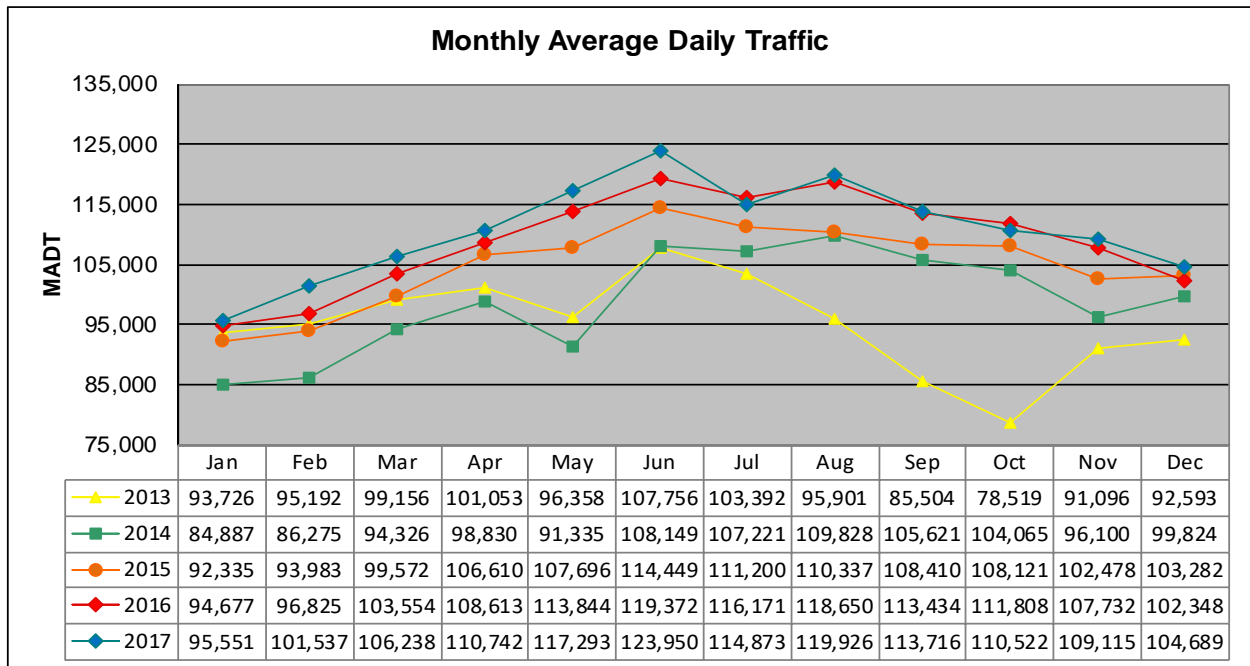


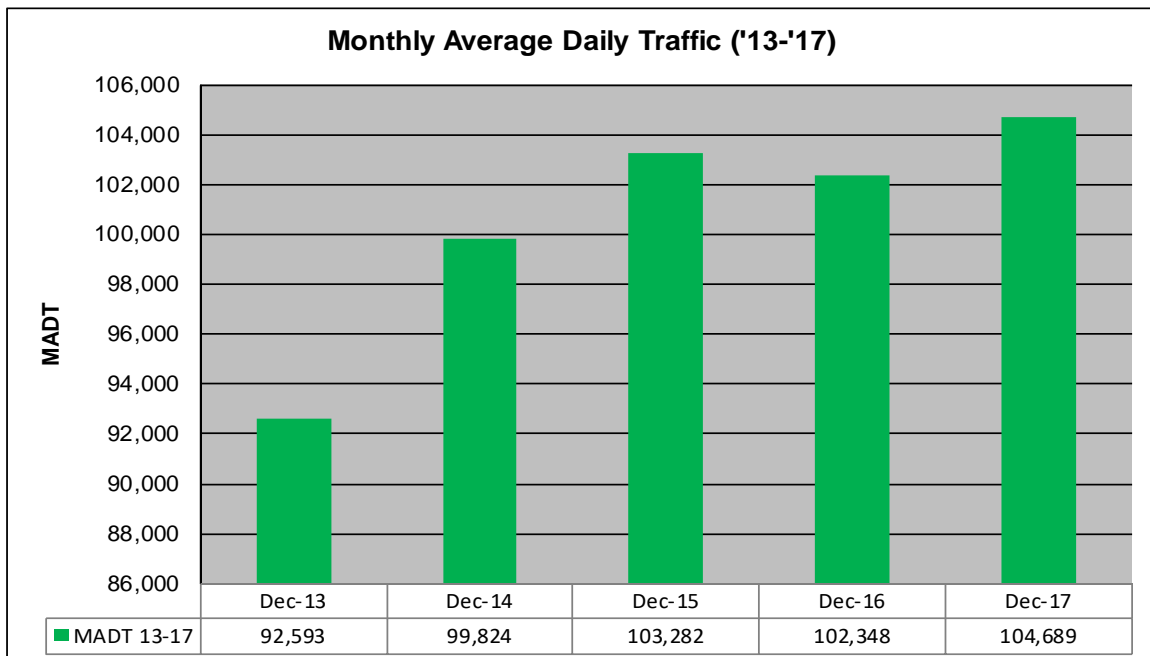
MONTHLY REPORT, STATION NO. 305 (ATR)

DECEMBER 2017

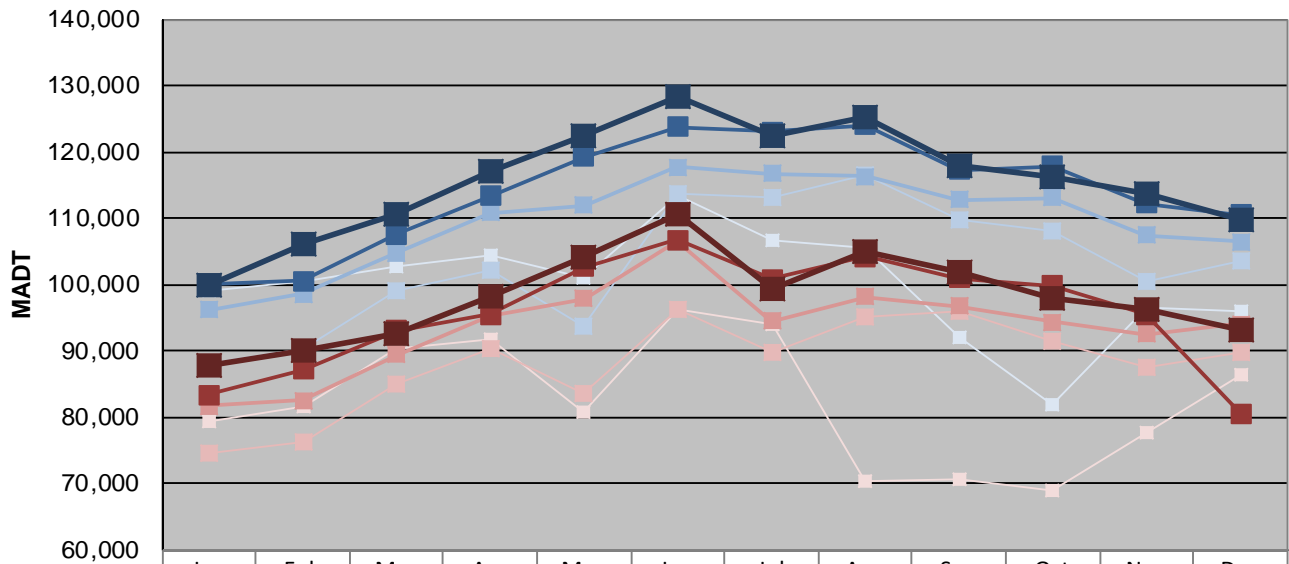
Station Measurement: VOLUME		
Route: I-35	Route Direction: N/S	Lanes: 6
County: Dakota		Closest City: Burnsville
Functional Class: Urban Principal Arterial - Interstate		
Location: S OF MSAS101 (CRYSTAL LAKE RD W) IN BURNSVILLE		
Ref Post: 087+00.070	True Mile: 87.071	Sequence No. 6786
Volume: 3,245,357		MADT: 104,689
Weekday (M-F) MADT: 104,689		Weekend (Sa-Su) MADT: 93,156



Note: Decrease in traffic May and August to November 2013 and May 2014 due to construction on I-35



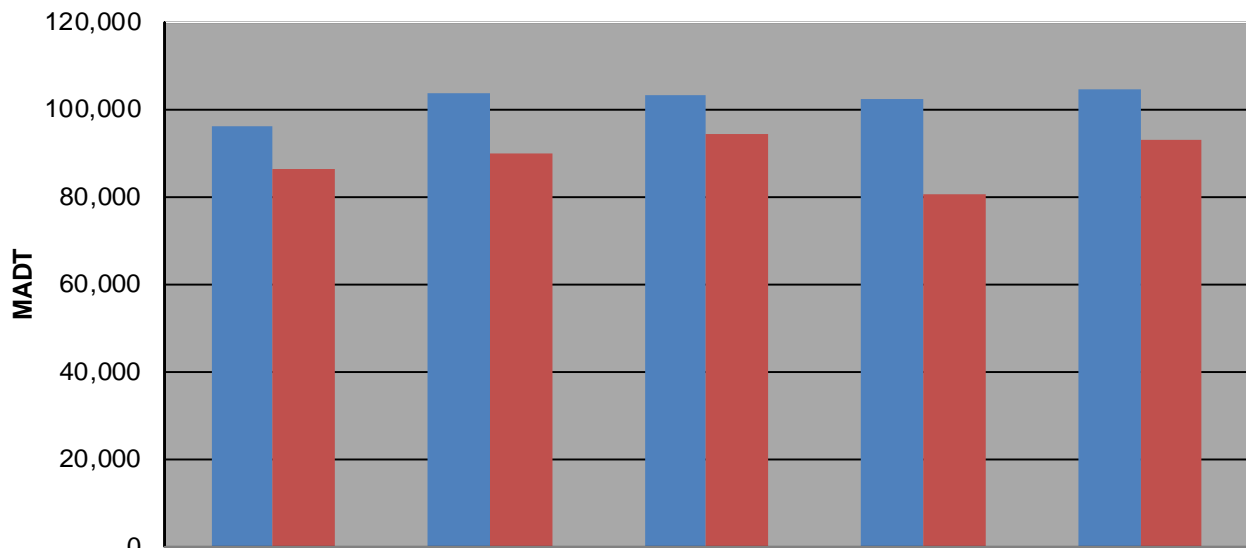
Weekday (WD)/Weekend (WE) Monthly Average Daily Traffic



	Jan	Feb	Mar	Apr	May	Jun	Jul	Aug	Sep	Oct	Nov	Dec
'13 WD	98,932	100,570	102,750	104,472	101,158	113,510	106,570	105,680	92,132	81,766	96,420	95,848
'13 WE	79,354	81,746	90,282	91,828	80,794	96,250	94,072	70,360	70,708	68,998	77,560	86,486
'14 WD	88,080	90,318	99,136	102,146	93,668	113,796	113,060	116,428	109,654	108,106	100,442	103,478
'14 WE	74,490	76,166	84,924	90,248	83,490	96,168	89,686	95,200	95,856	91,484	87,418	89,712
'15 WD	96,154	98,564	104,734	110,762	111,910	117,718	116,712	116,334	112,770	113,120	107,400	106,438
'15 WE	81,644	82,530	89,394	95,306	97,888	106,542	94,508	98,192	96,778	94,292	92,586	94,124
'16 WD	99,964	100,604	107,548	113,384	119,252	123,822	123,038	123,988	117,294	117,852	112,274	110,518
'16 WE	83,422	87,146	93,096	95,530	102,650	106,710	100,766	104,256	100,946	99,776	95,500	80,522
'17 WD	99,804	106,172	110,586	117,066	122,528	128,360	122,502	125,198	117,874	116,338	113,786	109,756
'17 WE	87,684	89,952	92,518	98,094	104,164	110,604	99,378	104,922	101,966	97,886	96,246	93,156

Note: 'Weekday' defined as Monday-Friday, 'Weekend' defined as Saturday-Sunday

Weekday/Weekend Monthly Average Daily Traffic ('13-'17)



	Dec-13	Dec-14	Dec-15	Dec-16	Dec-17
Weekday	95,848	103,478	103,282	102,348	104,689
Weekend	86,486	89,712	94,124	80,522	93,156