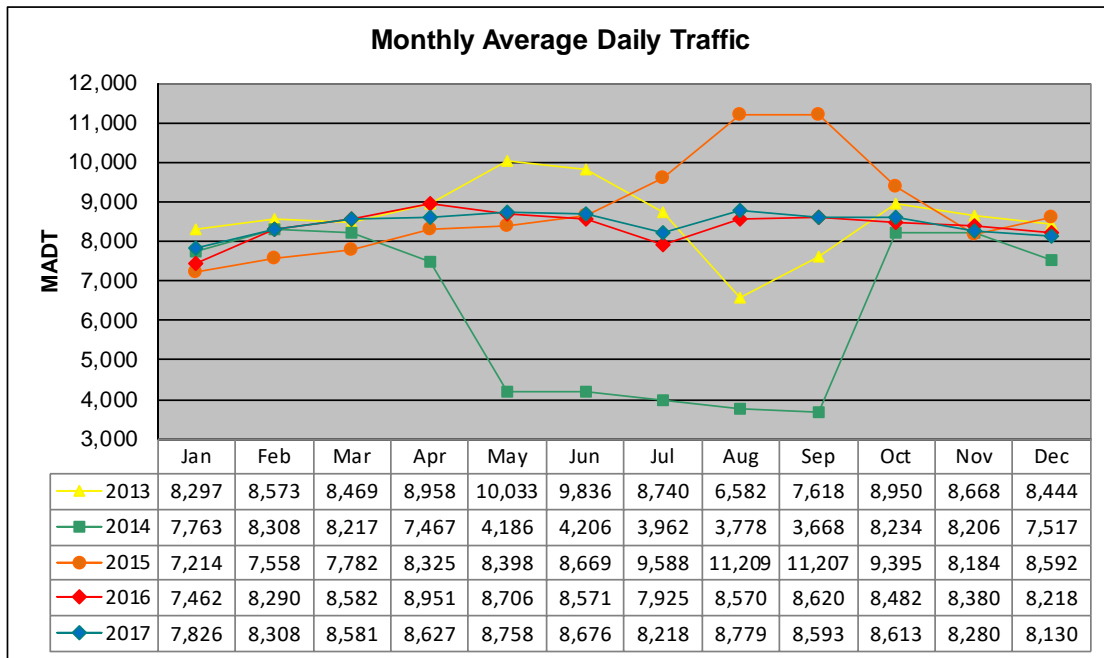


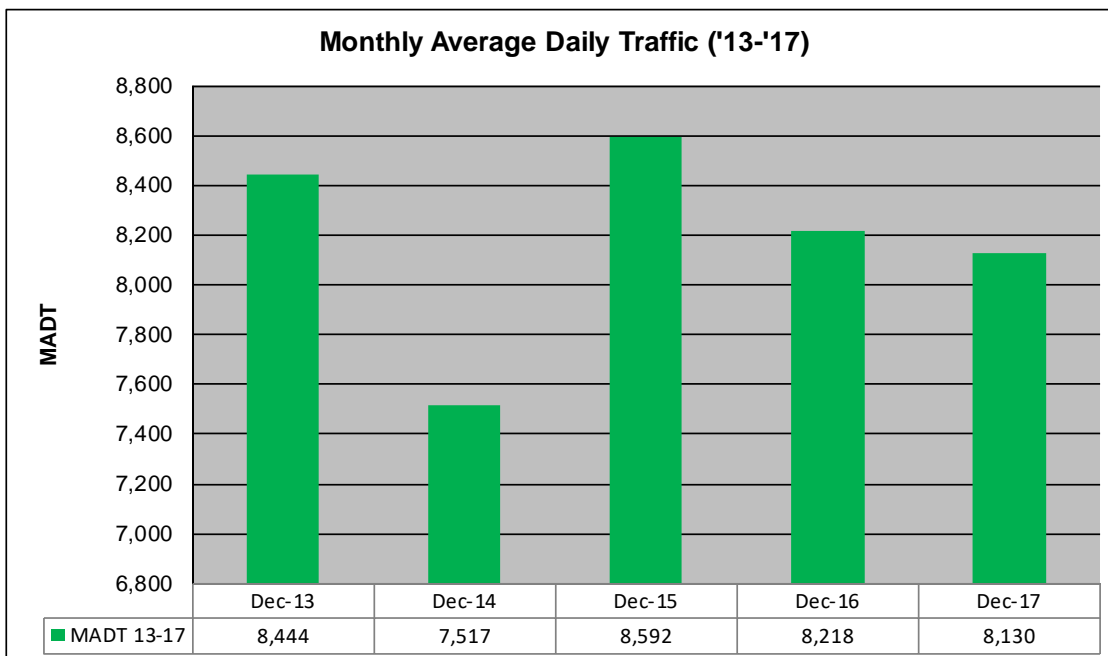
MONTHLY REPORT, STATION NO. 28 (ATR)

DECEMBER 2017

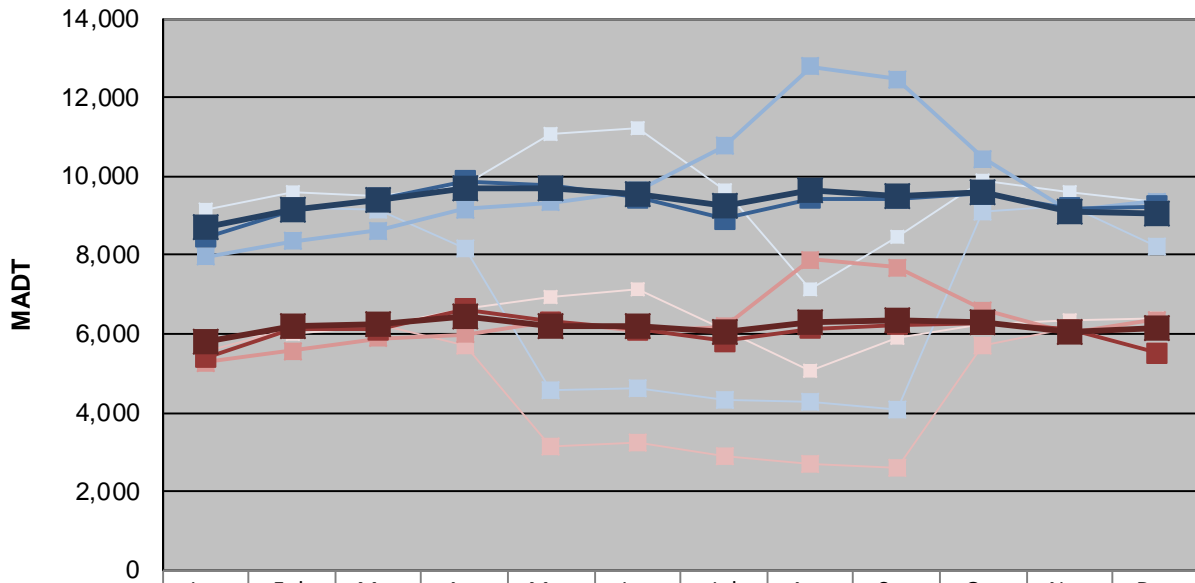
Station Measurement: VOLUME/SPEED/CLASS		
Route: MSAS 114	Route Direction: E/W	Lanes: 2
County: Stearns	Closest City: St Cloud	
Functional Class: Urban Minor Arterial		
Location: W OF 20TH AVE N IN ST CLOUD		
Ref Post: 000+00.750	True Mile: 0.75	Sequence No. 22993
Volume: 252,031		MADT: 8,130
Weekday (M-F) MADT: 8,130		Weekend (Sa-Su) MADT: 6,136



Note: Decrease in traffic August/September 2013 and April to September 2014 due to construction on TH 15



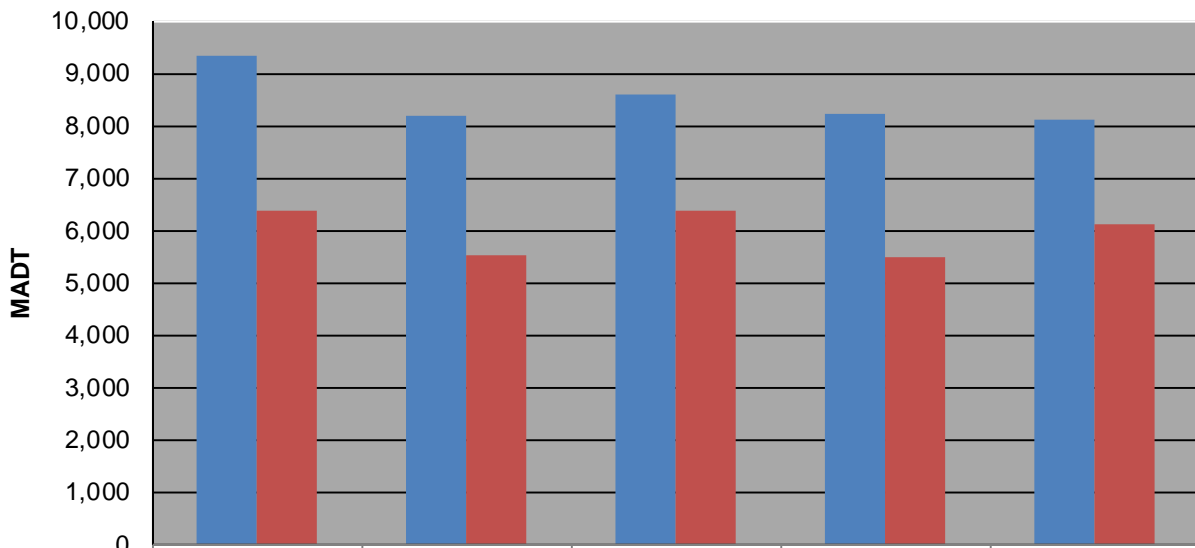
Weekday (WD)/Weekend (WE) Monthly Average Daily Traffic



	Jan	Feb	Mar	Apr	May	Jun	Jul	Aug	Sep	Oct	Nov	Dec
'13 WD	9,146	9,598	9,512	9,808	11,064	11,200	9,636	7,132	8,440	9,896	9,592	9,344
'13 WE	5,890	6,010	6,196	6,634	6,912	7,110	6,094	5,060	5,914	6,244	6,324	6,392
'14 WD	8,452	9,182	9,162	8,150	4,564	4,636	4,340	4,288	4,064	9,080	9,230	8,200
'14 WE	5,576	6,126	6,246	5,704	3,156	3,224	2,874	2,688	2,594	5,728	6,158	5,542
'15 WD	7,960	8,352	8,616	9,166	9,340	9,632	10,754	12,792	12,474	10,450	9,142	9,354
'15 WE	5,274	5,574	5,890	5,998	6,338	6,064	6,172	7,894	7,676	6,602	6,032	6,366
'16 WD	8,456	9,134	9,444	9,868	9,758	9,448	8,906	9,436	9,442	9,558	9,184	9,234
'16 WE	5,392	6,128	6,100	6,632	6,314	6,122	5,810	6,124	6,226	6,248	6,100	5,508
'17 WD	8,732	9,158	9,374	9,714	9,694	9,558	9,262	9,646	9,478	9,616	9,120	9,032
'17 WE	5,812	6,186	6,238	6,452	6,200	6,190	6,044	6,288	6,354	6,302	6,026	6,136

Note: 'Weekday' defined as Monday-Friday, 'Weekend' defined as Saturday-Sunday

Weekday/Weekend Monthly Average Daily Traffic ('13-'17)



	Dec-13	Dec-14	Dec-15	Dec-16	Dec-17
Weekday	9,344	8,200	8,592	8,218	8,130
Weekend	6,392	5,542	6,366	5,508	6,136