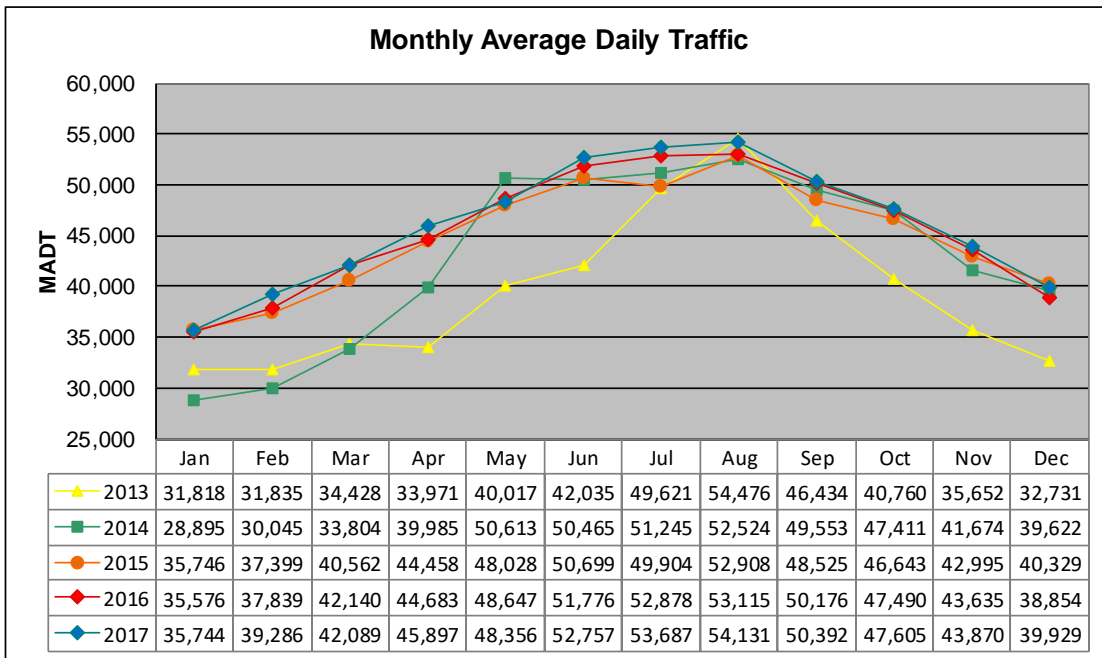


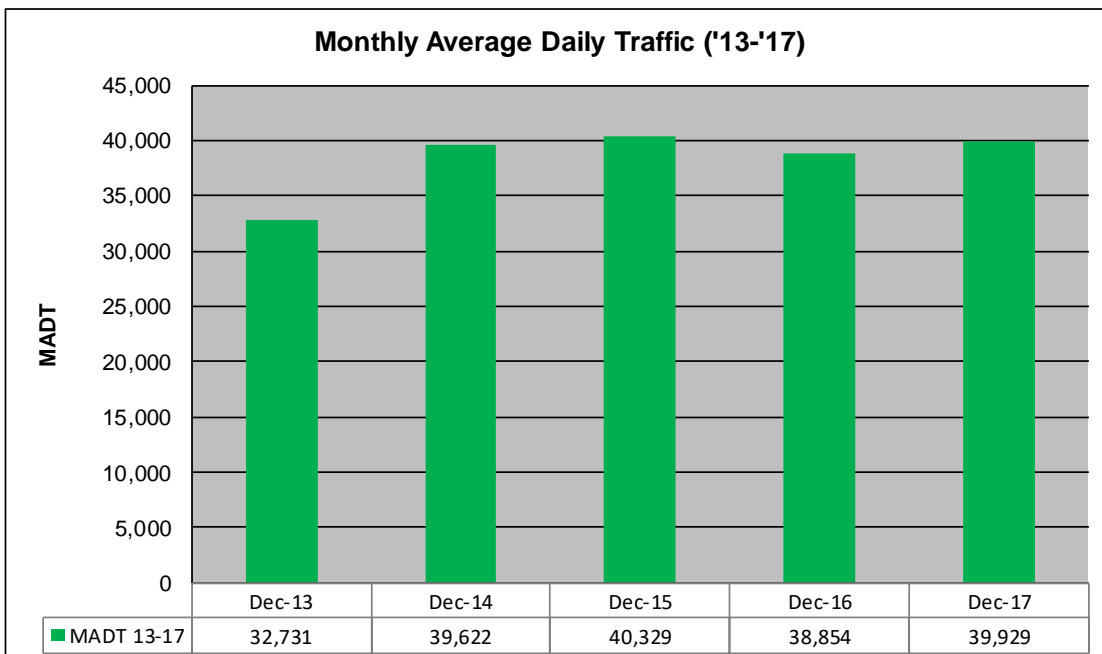
# MONTHLY REPORT, STATION NO. 200 (ATR)

## DECEMBER 2017

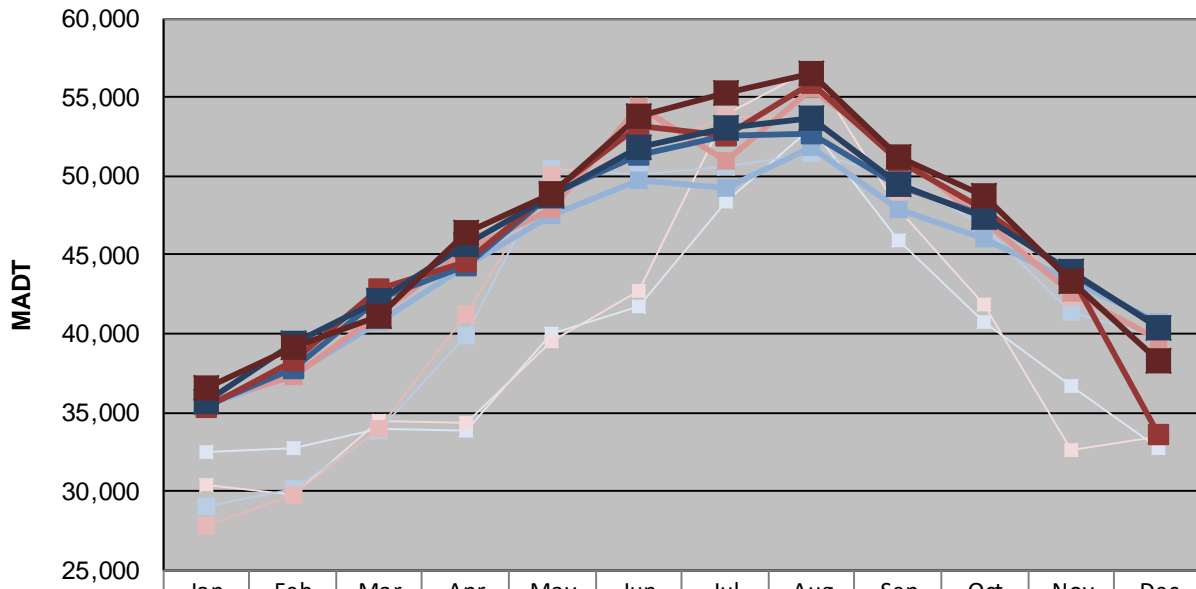
Station Measurement: VOLUME/SPEED/CLASS		
Route: I-94	Route Direction: N/S	Lanes: 4
County: Wright		Closest City: Clearwater
Functional Class: Rural Principal Arterial - Interstate		
Location: 1.1 MI NW OF CSAH8, SE OF CLEARWATER		
Ref Post: 182+00.200	True Mile: 183.084	Sequence No. 6781
<b>Volume: 1,237,807</b>		<b>MADT: 39,929</b>
<b>Weekday (M-F) MADT: 40,366</b>		<b>Weekend (Sa-Su) MADT: 38,302</b>



Note: Decrease in traffic April to June 2013 due to construction on I-94... Increase in traffic August 2013 and May/June 2014 due to TH 10 detours



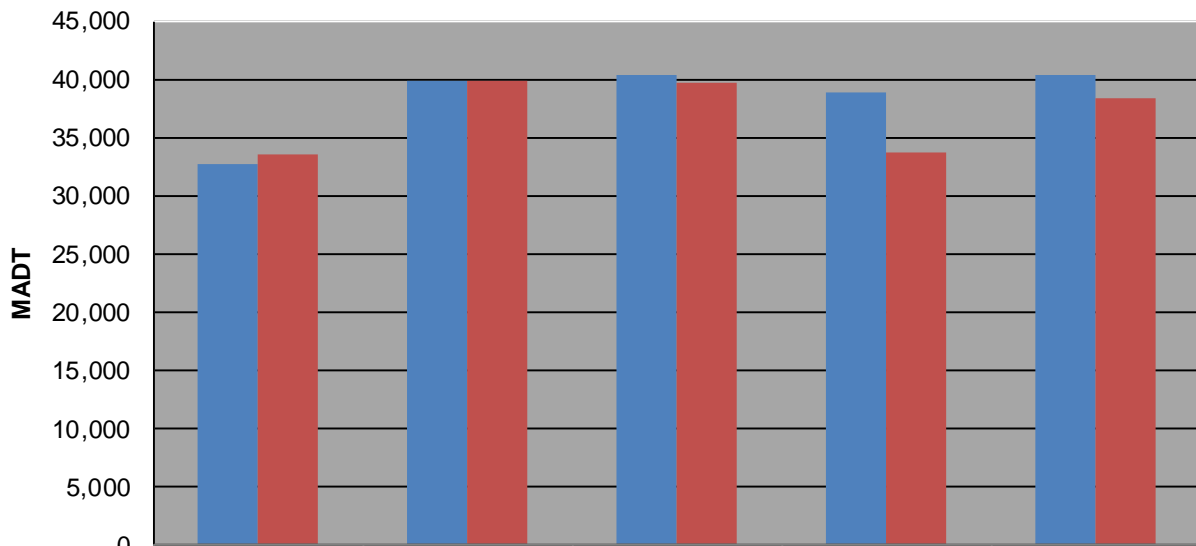
### Weekday (WD)/Weekend (WE) Monthly Average Daily Traffic



	Jan	Feb	Mar	Apr	May	Jun	Jul	Aug	Sep	Oct	Nov	Dec
'13 WD	32,432	32,680	34,018	33,896	40,016	41,704	48,420	53,078	45,854	40,688	36,642	32,730
'13 WE	30,446	29,726	34,494	34,300	39,514	42,698	53,968	56,806	47,840	41,800	32,646	33,472
'14 WD	29,012	30,138	33,842	39,852	50,424	50,064	50,530	51,426	49,996	46,806	41,352	39,774
'14 WE	27,868	29,812	34,018	41,210	50,144	51,510	53,776	53,714	48,840	48,196	42,320	39,906
'15 WD	35,498	37,442	40,688	44,250	47,564	49,742	49,210	51,862	47,932	46,084	43,340	40,734
'15 WE	35,676	37,292	41,262	45,350	47,880	54,406	50,974	55,484	51,408	47,098	42,646	39,656
'16 WD	35,456	37,758	42,198	44,338	48,840	51,314	52,500	52,712	49,308	47,548	43,818	40,532
'16 WE	35,280	38,244	42,782	44,498	48,986	53,124	52,616	55,834	50,980	47,842	43,664	33,650
'17 WD	35,712	39,342	42,140	45,626	48,772	51,866	53,058	53,632	49,506	47,416	43,924	40,366
'17 WE	36,524	39,148	41,060	46,440	48,896	53,740	55,314	56,528	51,164	48,786	43,272	38,302

Note: 'Weekday' defined as Monday-Friday, 'Weekend' defined as Saturday-Sunday

### Weekday/Weekend Monthly Average Daily Traffic ('13-'17)



	Dec-13	Dec-14	Dec-15	Dec-16	Dec-17
Weekday	32,730	39,774	40,329	38,854	40,366
Weekend	33,472	39,906	39,656	33,650	38,302