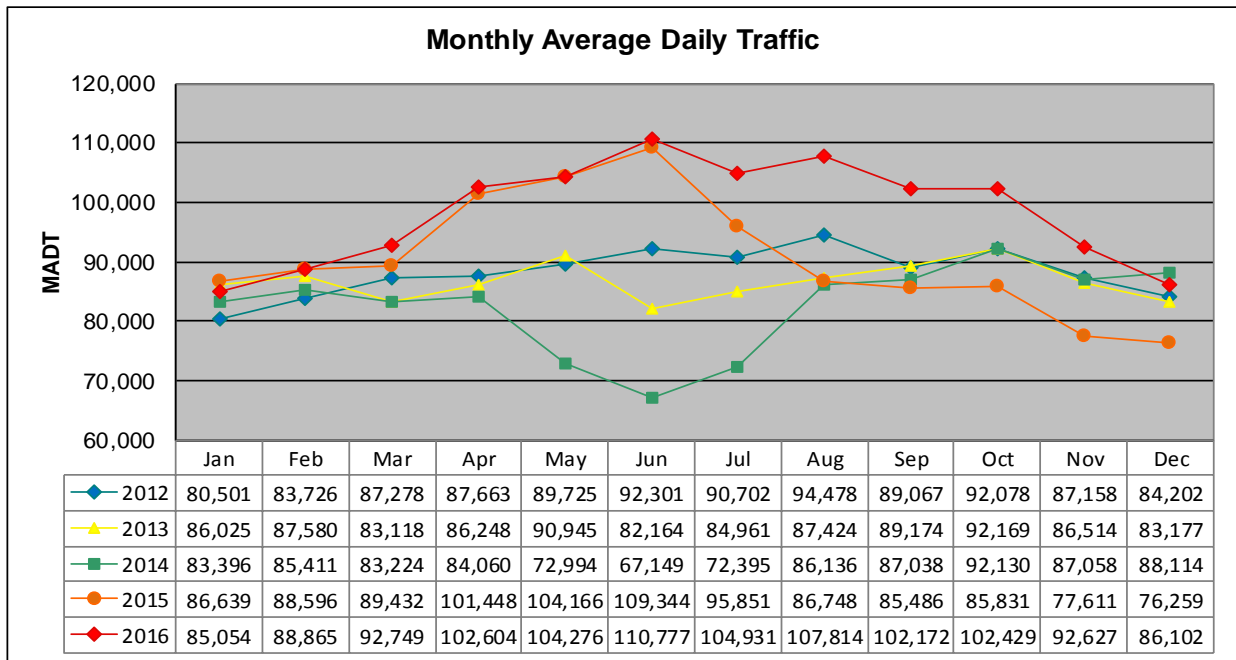


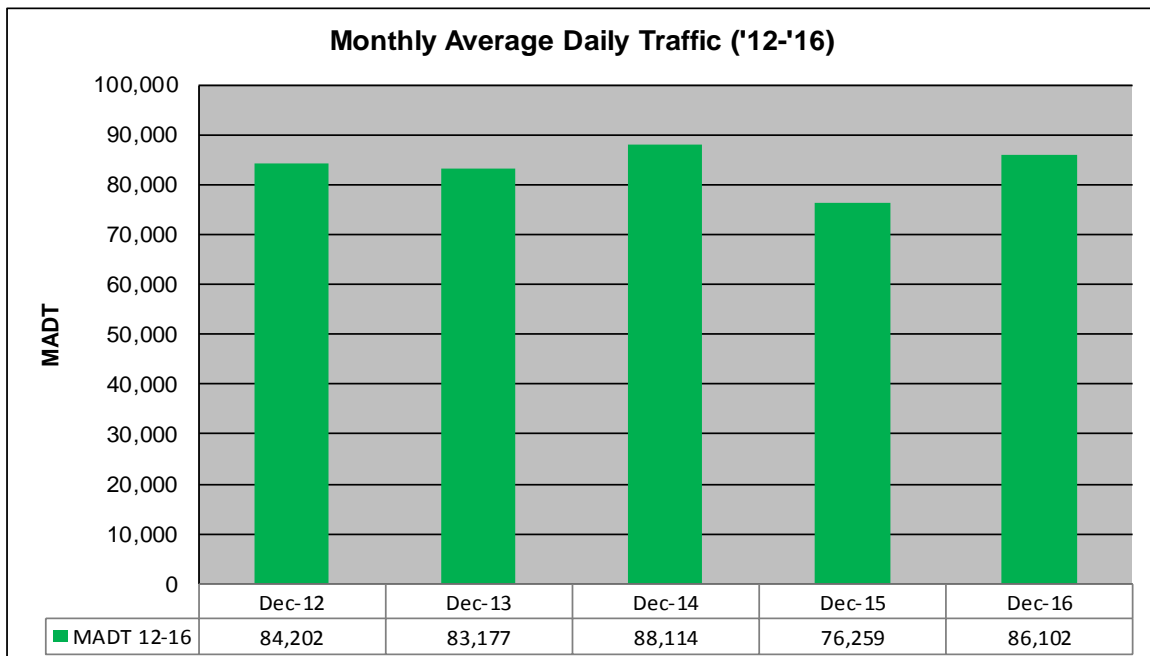
# MONTHLY REPORT, STATION NO. 405 (ATR)

## DECEMBER 2016

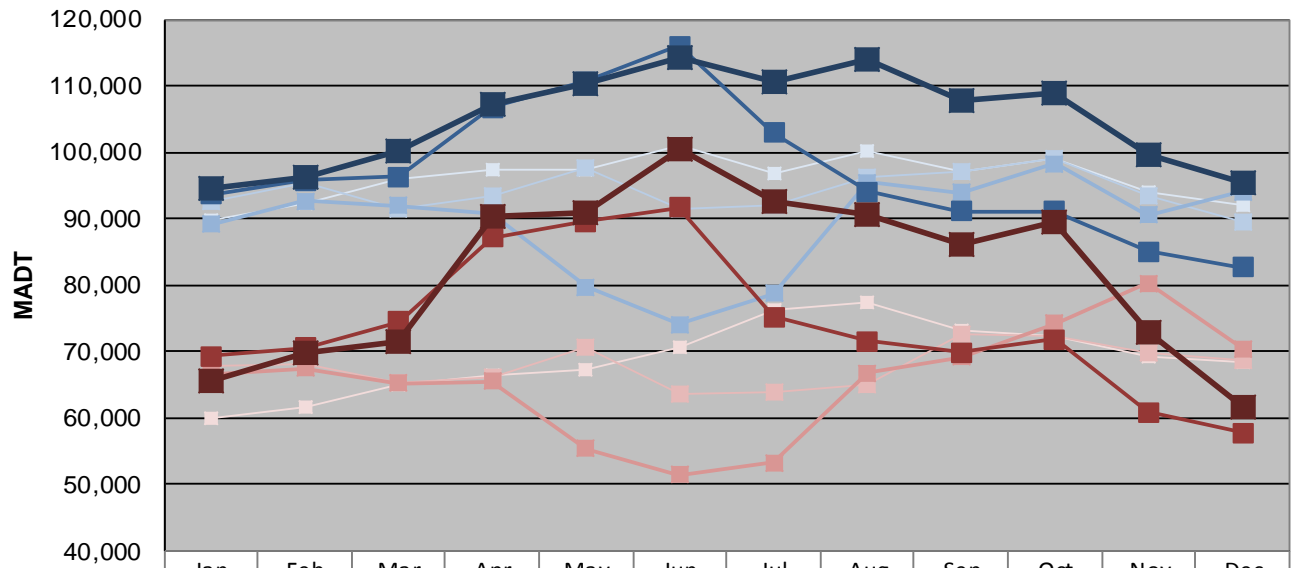
|  |                      |                                     |
|--|----------------------|-------------------------------------|
| Station Measurement: VOLUME  |                      |                                     |
| Route: TH 169  | Route Direction: N/S | Lanes: 4                            |
| County: Hennepin   |                      | Closest City: St Louis Park         |
| Functional Class: Urban Principal Arterial - Other Freeways or Expressways |                      |                                     |
| Location: N OF MSAS296 (CEDAR LAKE RD) IN ST LOUIS PARK                    |                      |                                     |
| Ref Post: 128+00.870   | True Mile: 126.71    | Sequence No. 9883                   |
| <b>Volume: 2,669,175</b>   |                      | <b>MADT: 86,102</b>                 |
| <b>Weekday (M-F) MADT: 99,636</b>  |                      | <b>Weekend (Sa-Su) MADT: 72,858</b> |



Note: Decrease in traffic June to August 2013, May to July 2014, and December 2015 due to construction on TH 169...  
 Increase in traffic April to July 2015 and June to October 2016 due to detour from TH 100



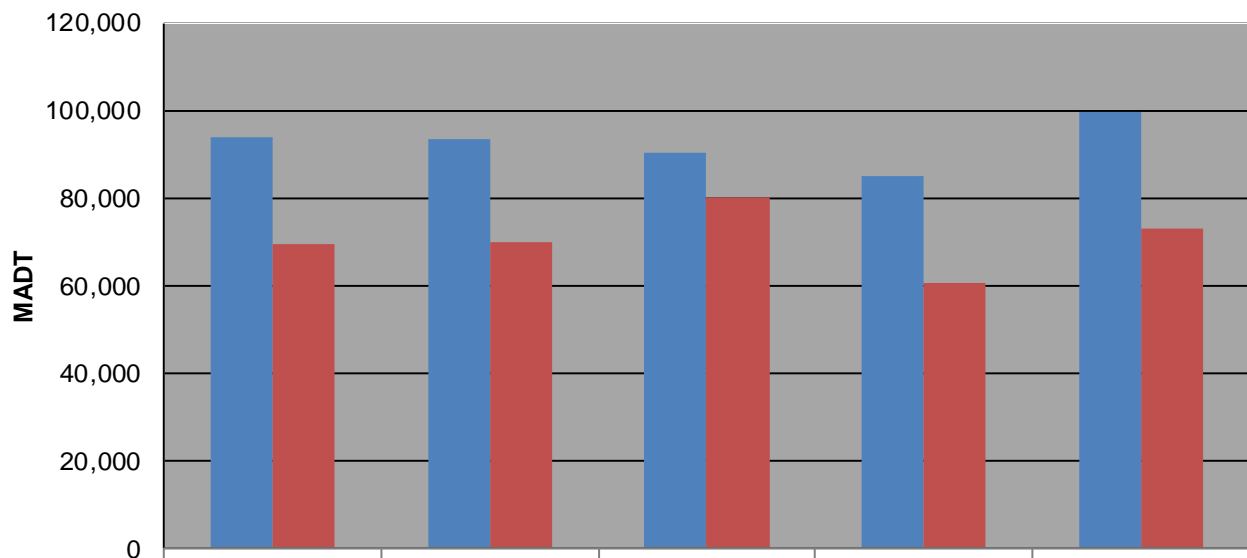
### Weekday (WD)/Weekend (WE) Monthly Average Daily Traffic



|        | Jan    | Feb    | Mar     | Apr     | May     | Jun     | Jul     | Aug     | Sep     | Oct     | Nov    | Dec    |
|--------|--------|--------|---------|---------|---------|---------|---------|---------|---------|---------|--------|--------|
| '12 WD | 89,714 | 92,288 | 95,978  | 97,246  | 97,256  | 101,148 | 96,822  | 100,274 | 97,030  | 99,116  | 94,060 | 92,002 |
| '12 WE | 59,788 | 61,630 | 64,860  | 66,394  | 67,284  | 70,722  | 76,130  | 77,458  | 73,144  | 72,218  | 69,248 | 68,238 |
| '13 WD | 92,596 | 95,332 | 91,314  | 93,474  | 97,552  | 91,436  | 91,964  | 96,318  | 97,086  | 99,082  | 93,484 | 89,416 |
| '13 WE | 67,682 | 68,204 | 65,260  | 66,224  | 70,580  | 63,622  | 63,984  | 65,062  | 72,598  | 72,330  | 69,892 | 68,544 |
| '14 WD | 89,146 | 92,618 | 92,010  | 90,872  | 79,712  | 74,122  | 78,754  | 95,444  | 93,860  | 98,234  | 90,472 | 94,126 |
| '14 WE | 66,634 | 67,396 | 65,258  | 65,418  | 55,340  | 51,354  | 53,202  | 66,702  | 69,192  | 74,266  | 80,232 | 70,394 |
| '15 WD | 93,690 | 95,796 | 96,240  | 106,676 | 110,710 | 115,996 | 102,972 | 94,048  | 91,062  | 91,164  | 85,098 | 82,608 |
| '15 WE | 69,256 | 70,598 | 74,480  | 87,124  | 89,608  | 91,604  | 75,216  | 71,574  | 69,916  | 71,792  | 60,778 | 57,710 |
| '16 WD | 94,498 | 96,204 | 100,150 | 107,248 | 110,370 | 114,386 | 110,626 | 113,858 | 107,692 | 108,798 | 99,636 | 95,448 |
| '16 WE | 65,538 | 69,816 | 71,462  | 90,258  | 90,998  | 100,518 | 92,494  | 90,690  | 86,018  | 89,518  | 72,858 | 61,730 |

Note: 'Weekday' defined as Monday-Friday, 'Weekend' defined as Saturday-Sunday

### Weekday/Weekend Monthly Average Daily Traffic ('12-'16)



|         | Dec-12 | Dec-13 | Dec-14 | Dec-15 | Dec-16 |
|---------|--------|--------|--------|--------|--------|
| Weekday | 94,060 | 93,484 | 90,472 | 85,098 | 99,636 |
| Weekend | 69,248 | 69,892 | 80,232 | 60,778 | 72,858 |