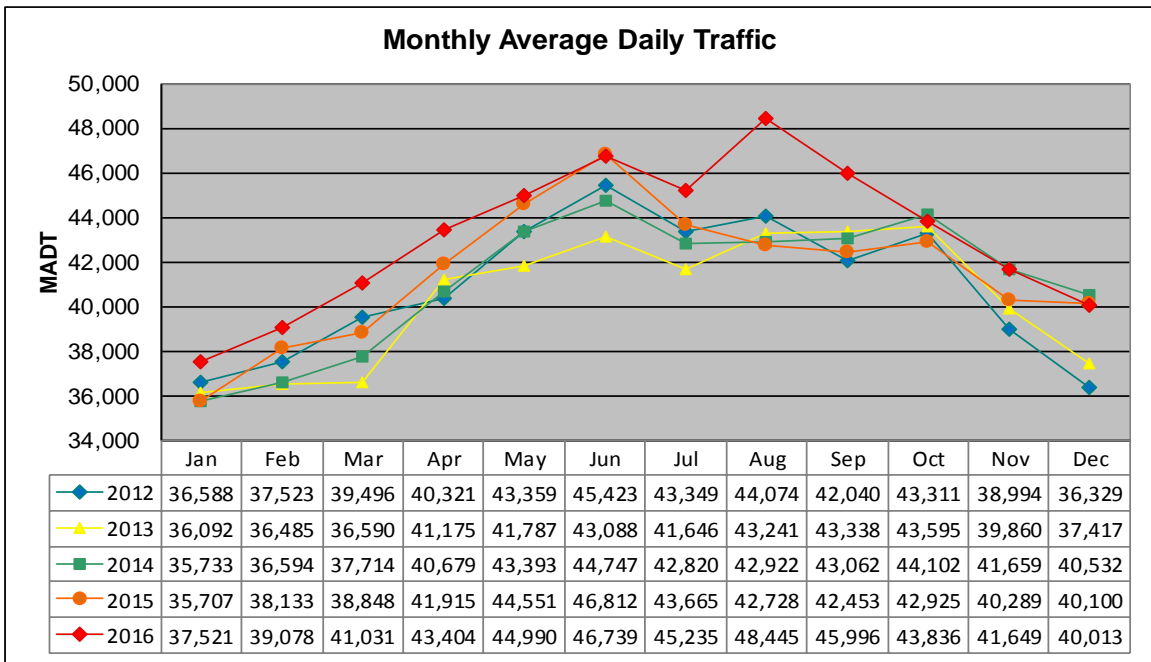


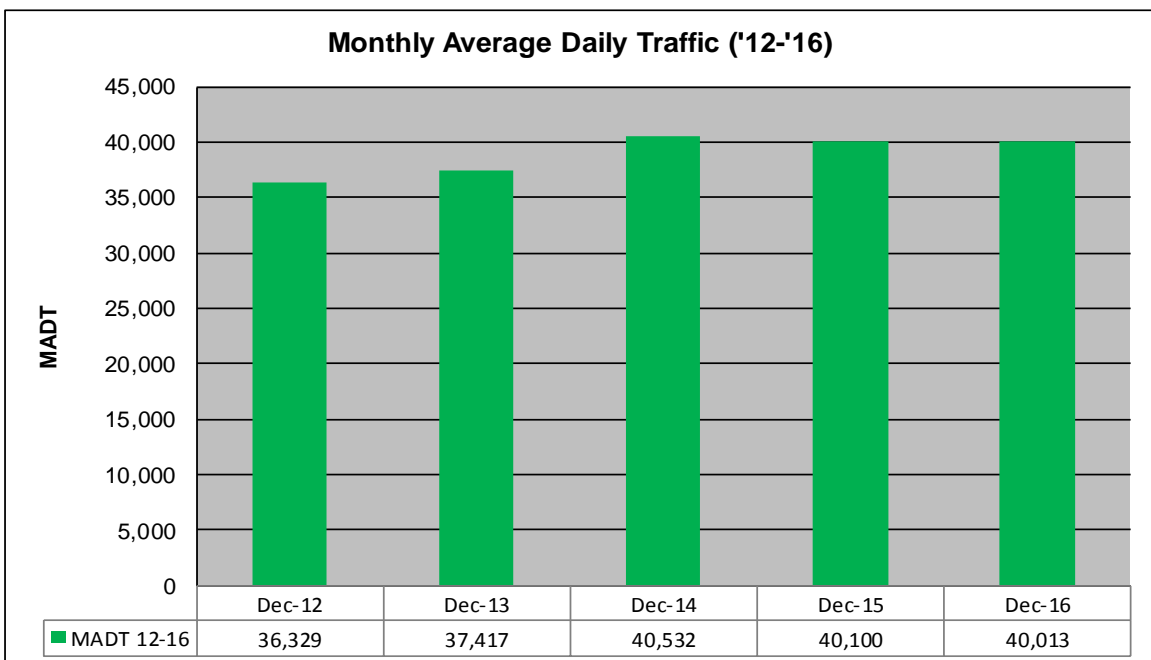
# MONTHLY REPORT, STATION NO. 365 (ATR)

## DECEMBER 2016

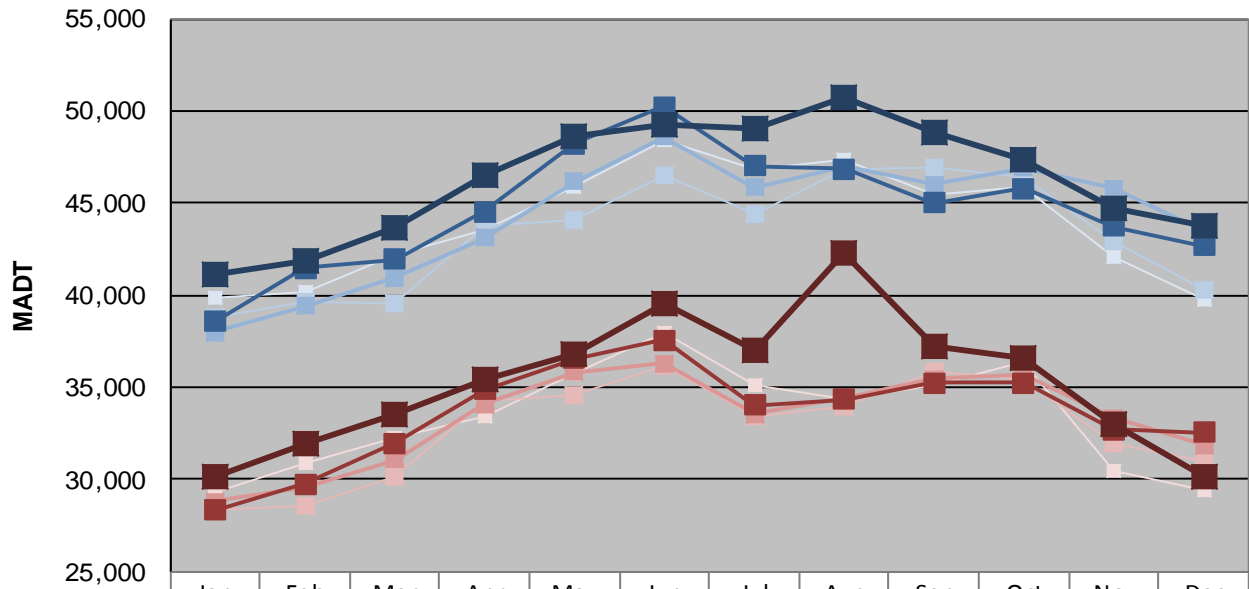
Station Measurement: VOLUME/SPEED/CLASS		
Route: TH 65	Route Direction: N/S	Lanes: 4
County: Anoka		Closest City: Ham Lake
Functional Class: Urban Other Principal Arterial		
Location: S OF CSAH116 (BUNKER LAKE BLVD NE) IN HAM LAKE		
Ref Post: 016+00.720	True Mile: 18.577	Sequence No. 9867
<b>Volume: 1,240,415</b>		<b>MADT: 40,013</b>
<b>Weekday (M-F) MADT: 44,676</b>		<b>Weekend (Sa-Su) MADT: 33,024</b>



Note: Increase in traffic August/September 2016 due to detours



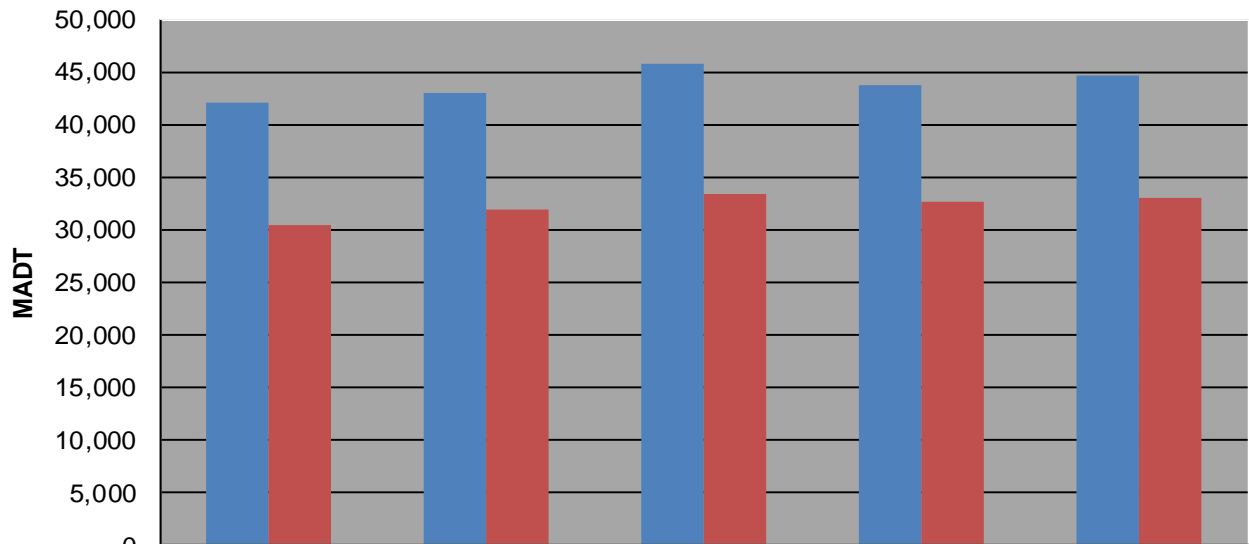
### Weekday (WD)/Weekend (WE) Monthly Average Daily Traffic



	Jan	Feb	Mar	Apr	May	Jun	Jul	Aug	Sep	Oct	Nov	Dec
'12 WD	39,874	40,144	42,202	43,512	45,912	48,398	46,794	47,378	45,498	45,844	42,110	39,770
'12 WE	29,334	30,880	32,222	33,450	35,784	37,926	35,100	34,392	35,124	36,400	30,500	29,454
'13 WD	38,854	39,654	39,534	43,716	44,136	46,530	44,352	46,848	46,942	46,436	42,974	40,272
'13 WE	28,312	28,562	30,138	34,284	34,560	36,206	33,426	33,990	35,826	35,472	31,970	30,966
'14 WD	37,996	39,402	40,922	43,082	46,176	48,608	45,874	46,948	46,004	46,900	45,810	43,474
'14 WE	28,806	29,578	31,096	34,092	35,820	36,318	33,534	34,400	35,466	35,738	33,356	31,844
'15 WD	38,576	41,488	41,940	44,534	48,224	50,250	47,004	46,834	45,030	45,818	43,760	42,660
'15 WE	28,316	29,746	31,970	34,860	36,550	37,586	34,048	34,332	35,264	35,266	32,686	32,572
'16 WD	41,108	41,842	43,654	46,504	48,664	49,298	49,020	50,700	48,846	47,394	44,676	43,724
'16 WE	30,116	31,976	33,514	35,388	36,764	39,560	37,024	42,250	37,244	36,604	33,024	30,170

Note: 'Weekday' defined as Monday-Friday, 'Weekend' defined as Saturday-Sunday

### Weekday/Weekend Monthly Average Daily Traffic ('12-'16)



	Dec-12	Dec-13	Dec-14	Dec-15	Dec-16
Weekday	42,110	42,974	45,810	43,760	44,676
Weekend	30,500	31,970	33,356	32,686	33,024