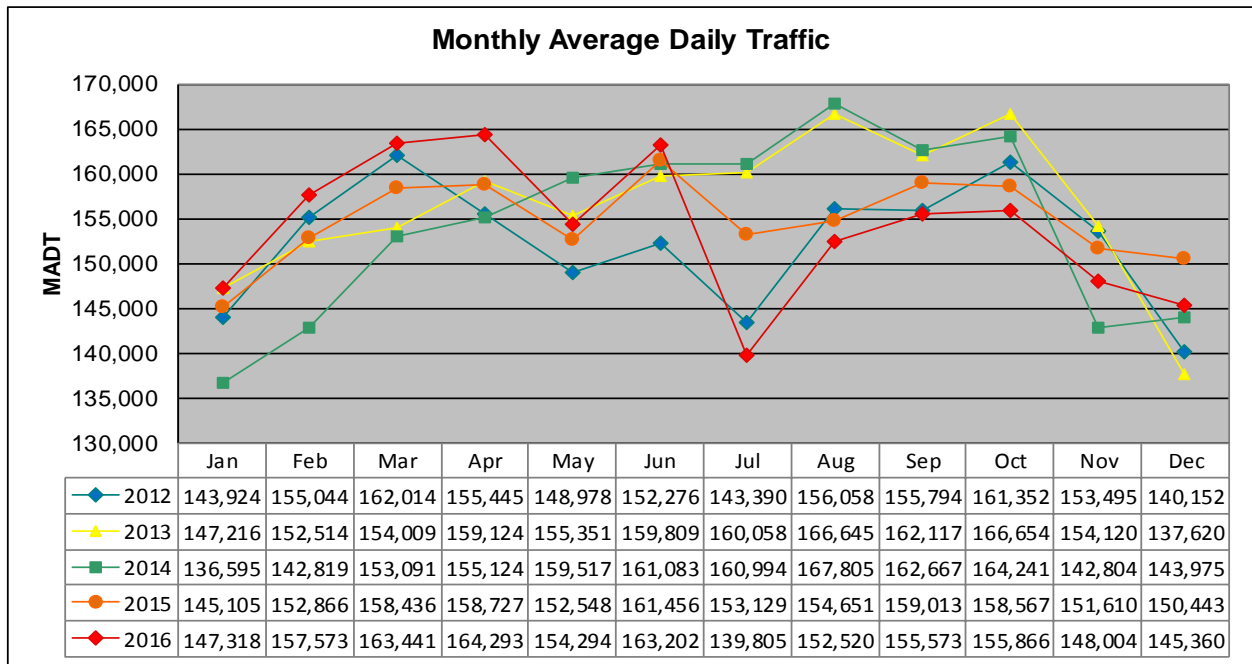


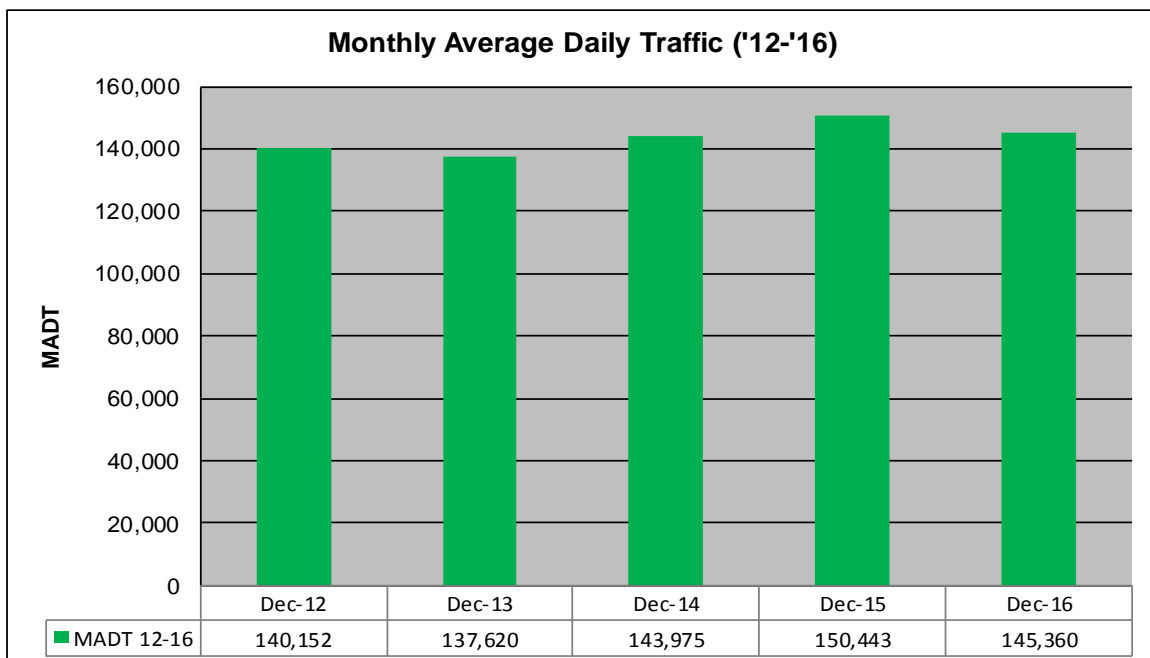
MONTHLY REPORT, STATION NO. 301 (ATR)

DECEMBER 2016

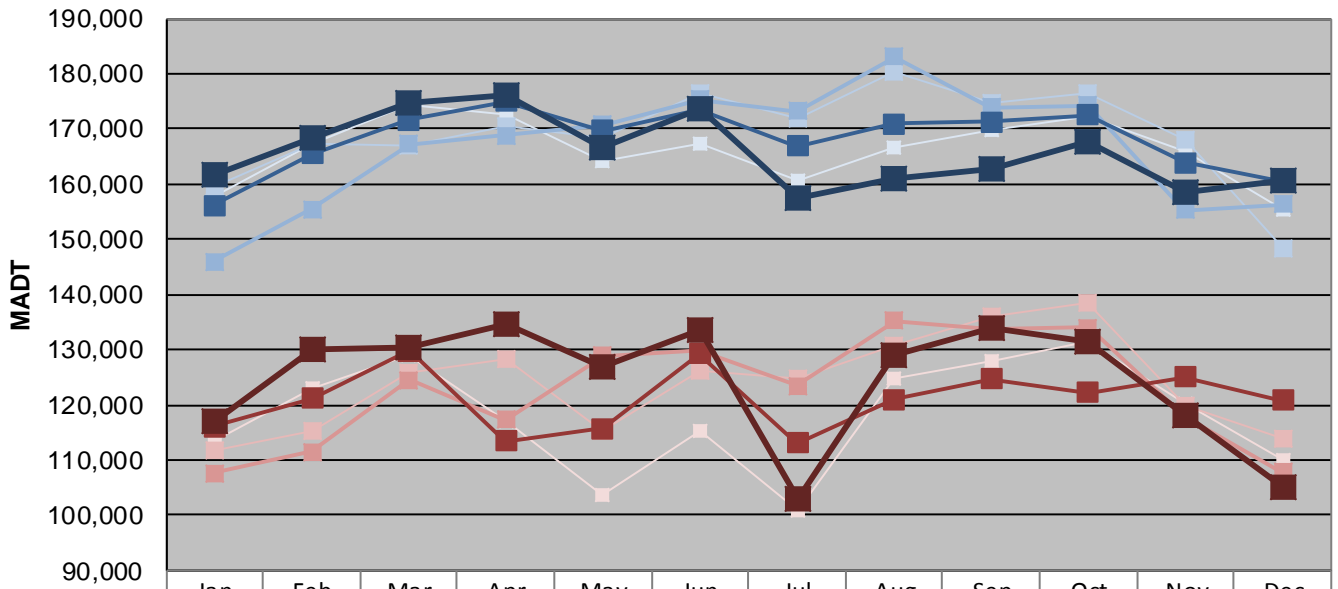
Station Measurement: VOLUME		
Route: I-94	Route Direction: E/W	Lanes: 8
County: Ramsey		Closest City: St Paul
Functional Class: Urban Principal Arterial - Interstate		
Location: W OF N VICTORIA ST IN ST PAUL		
Ref Post: 239+00.922	True Mile: 240.541	Sequence No. 9834
Volume: 4,506,147		MADT: 145,360
Weekday (M-F) MADT: 158,458		Weekend (Sa-Su) MADT: 117,958



Note: Decrease in traffic July 2016 due to construction on I-94



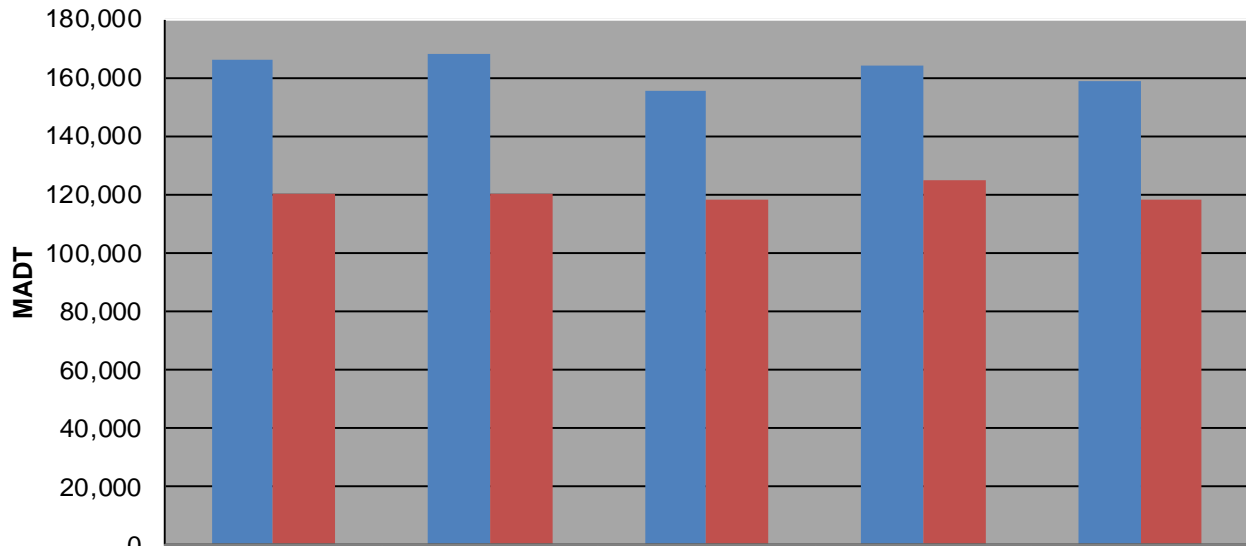
Weekday (WD)/Weekend (WE) Monthly Average Daily Traffic



	Jan	Feb	Mar	Apr	May	Jun	Jul	Aug	Sep	Oct	Nov	Dec
'12 WD	157,896	167,408	174,266	172,766	164,326	167,464	160,522	166,626	169,706	172,290	165,836	155,236
'12 WE	113,634	123,072	128,940	117,092	103,562	115,088	100,940	124,648	127,974	131,424	120,046	110,130
'13 WD	159,474	167,366	166,808	170,380	168,544	176,578	171,944	180,466	174,664	176,504	168,004	148,256
'13 WE	111,916	115,388	125,940	128,426	115,190	126,272	124,670	130,868	136,048	138,386	119,944	113,684
'14 WD	145,928	155,374	167,166	168,764	170,804	175,314	173,306	183,102	173,866	174,276	155,224	156,364
'14 WE	107,526	111,430	124,438	117,370	128,850	129,720	123,482	135,208	133,644	133,998	117,962	107,844
'15 WD	156,246	165,558	171,592	174,928	169,736	173,544	166,840	170,954	171,216	172,488	163,892	160,510
'15 WE	116,122	121,134	129,744	113,502	115,670	129,186	113,058	121,006	124,634	122,134	124,990	120,762
'16 WD	161,828	168,380	174,814	176,260	166,488	173,768	157,358	160,966	162,802	167,854	158,458	160,762
'16 WE	117,150	130,026	130,322	134,708	127,036	133,472	102,776	129,082	134,030	131,426	117,958	104,980

Note: 'Weekday' defined as Monday-Friday, 'Weekend' defined as Saturday-Sunday

Weekday/Weekend Monthly Average Daily Traffic ('12-'16)



	Dec-12	Dec-13	Dec-14	Dec-15	Dec-16
Weekday	165,836	168,004	155,224	163,892	158,458
Weekend	120,046	119,944	117,962	124,990	117,958