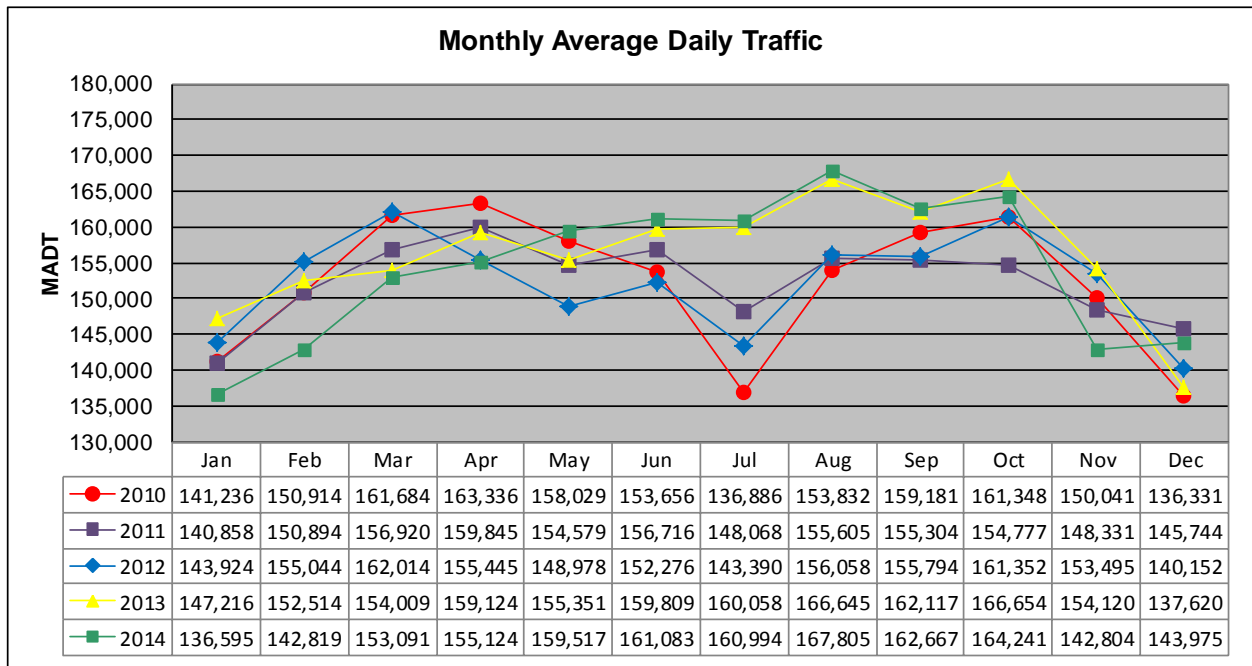


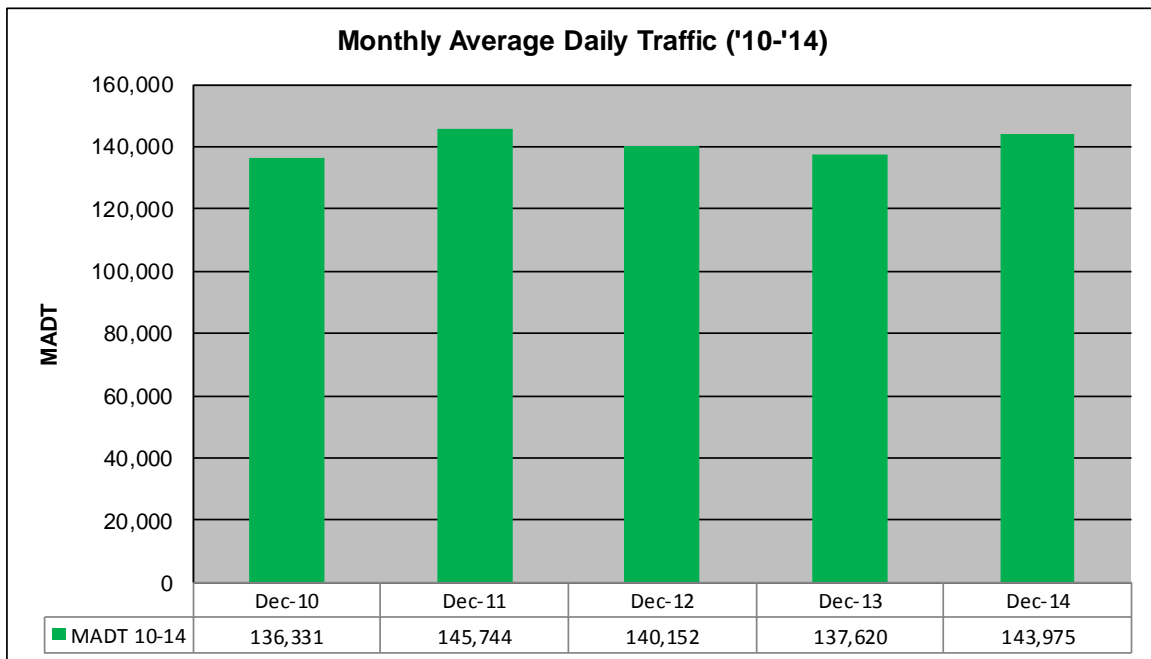
MONTHLY REPORT, STATION NO. 301 (ATR)

DECEMBER 2014

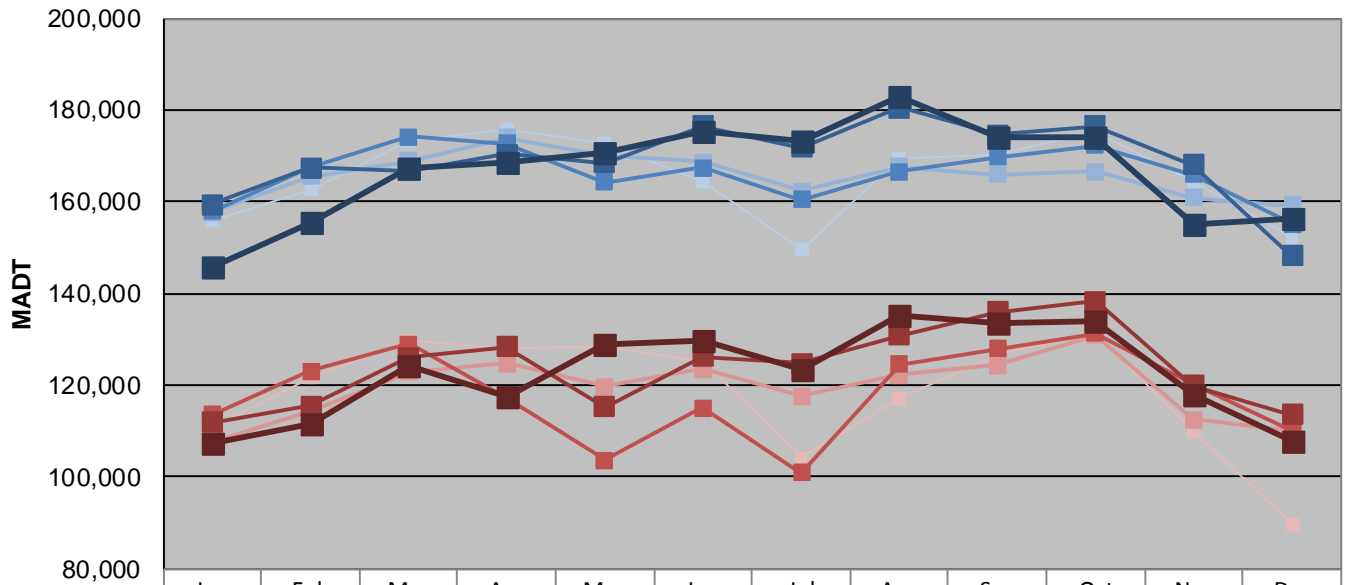
| | | |
|---|----------------------|--------------------------------------|
| Station Measurement: VOLUME | | |
| Route: I-94 | Route Direction: E/W | Lanes: 8 |
| County: Ramsey | | Closest City: St Paul |
| Functional Class: Urban Principal Arterial - Interstate | | |
| Location: W OF N VICTORIA ST IN ST PAUL | | |
| Ref Post: 239+00.922 | True Mile: 240.541 | Sequence No. 9834 |
| Volume: 4,463,223 | | MADT: 143,975 |
| Weekday (M-F) MADT: 156,364 | | Weekend (Sa-Su) MADT: 107,844 |



Note: Decrease in traffic July 2010 due to construction on I-94



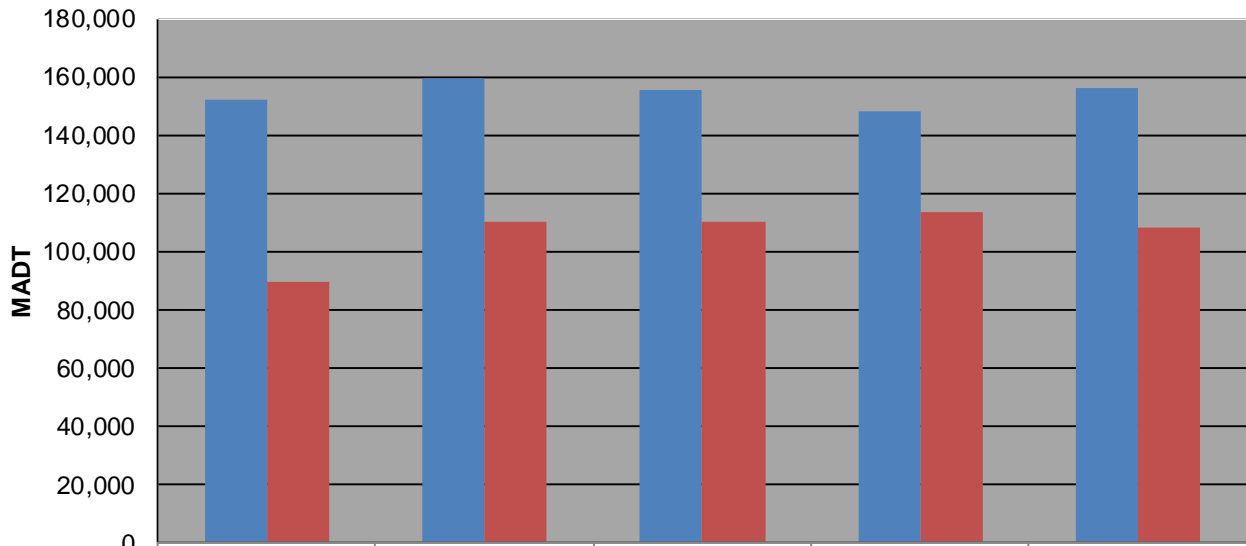
Weekday (WD)/Weekend (WE) Monthly Average Daily Traffic



| | Jan | Feb | Mar | Apr | May | Jun | Jul | Aug | Sep | Oct | Nov | Dec |
|--------|---------|---------|---------|---------|---------|---------|---------|---------|---------|---------|---------|---------|
| '10 WD | 155,916 | 162,606 | 173,254 | 175,752 | 172,872 | 164,170 | 149,528 | 169,482 | 170,404 | 175,122 | 164,462 | 152,098 |
| '10 WE | 110,760 | 121,688 | 129,860 | 128,006 | 128,650 | 125,058 | 104,262 | 117,190 | 126,716 | 131,408 | 110,098 | 89,422 |
| '11 WD | 157,616 | 165,538 | 168,814 | 174,020 | 170,178 | 168,600 | 162,306 | 167,542 | 165,852 | 166,568 | 160,868 | 159,268 |
| '11 WE | 107,412 | 114,258 | 122,868 | 124,716 | 119,704 | 123,494 | 117,560 | 122,162 | 124,378 | 130,978 | 112,468 | 110,048 |
| '12 WD | 157,896 | 167,408 | 174,266 | 172,766 | 164,326 | 167,464 | 160,522 | 166,626 | 169,706 | 172,290 | 165,836 | 155,236 |
| '12 WE | 113,634 | 123,072 | 128,940 | 117,092 | 103,562 | 115,088 | 100,940 | 124,648 | 127,974 | 131,424 | 120,046 | 110,130 |
| '13 WD | 159,474 | 167,366 | 166,808 | 170,380 | 168,544 | 176,578 | 171,944 | 180,466 | 174,664 | 176,504 | 168,004 | 148,256 |
| '13 WE | 111,916 | 115,388 | 125,940 | 128,426 | 115,190 | 126,272 | 124,670 | 130,868 | 136,048 | 138,386 | 119,944 | 113,684 |
| '14 WD | 145,928 | 155,374 | 167,166 | 168,764 | 170,804 | 175,314 | 173,306 | 183,102 | 173,866 | 174,276 | 155,224 | 156,364 |
| '14 WE | 107,526 | 111,430 | 124,438 | 117,370 | 128,850 | 129,720 | 123,482 | 135,208 | 133,644 | 133,998 | 117,962 | 107,844 |

Note: 'Weekday' defined as Monday-Friday, 'Weekend' defined as Saturday-Sunday

Weekday/Weekend Monthly Average Daily Traffic ('10-'14)



| | Dec-10 | Dec-11 | Dec-12 | Dec-13 | Dec-14 |
|---------|---------|---------|---------|---------|---------|
| Weekday | 152,098 | 159,268 | 155,236 | 148,256 | 156,364 |
| Weekend | 89,422 | 110,048 | 110,130 | 113,684 | 107,844 |