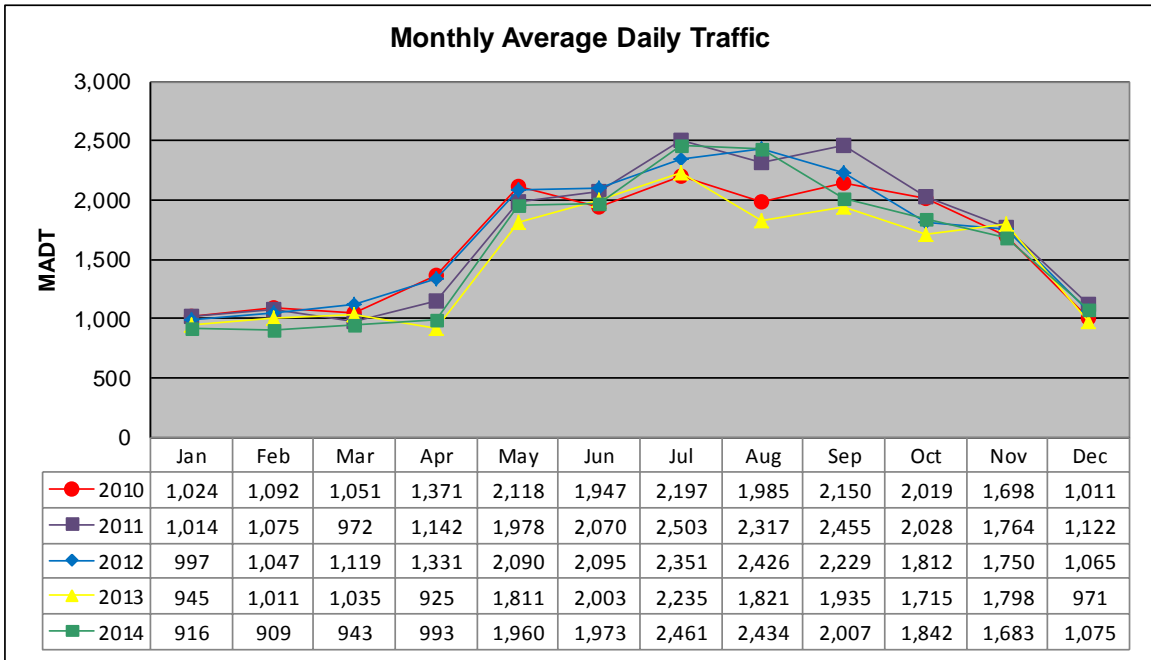


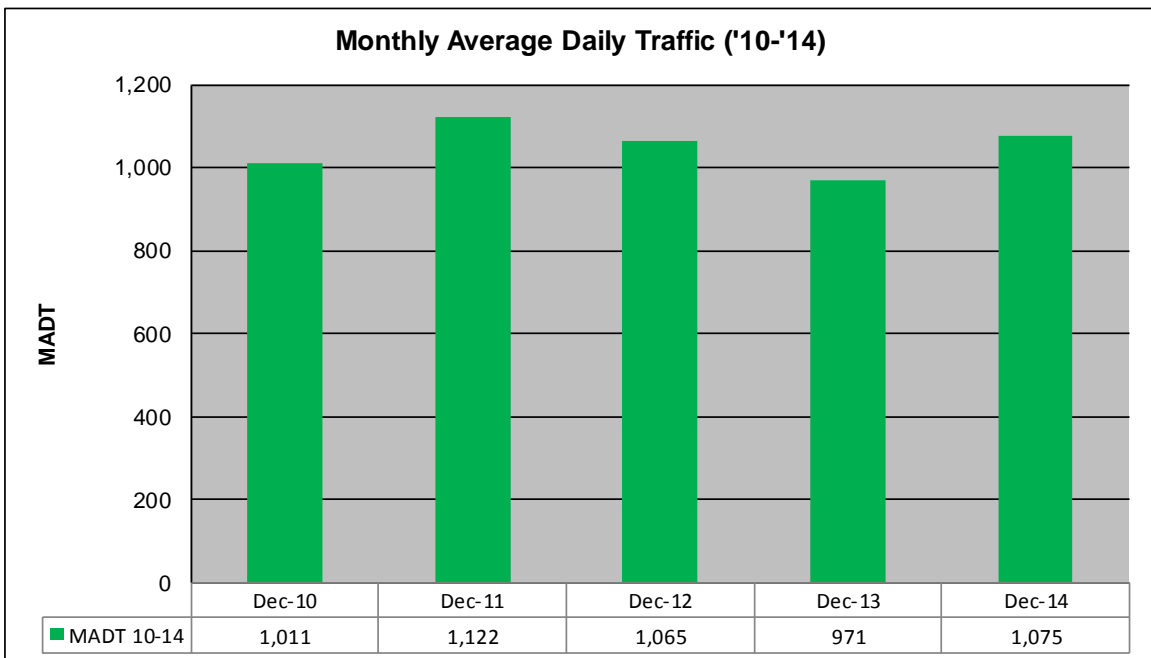
MONTHLY REPORT, STATION NO. 222 (ATR)

DECEMBER 2014

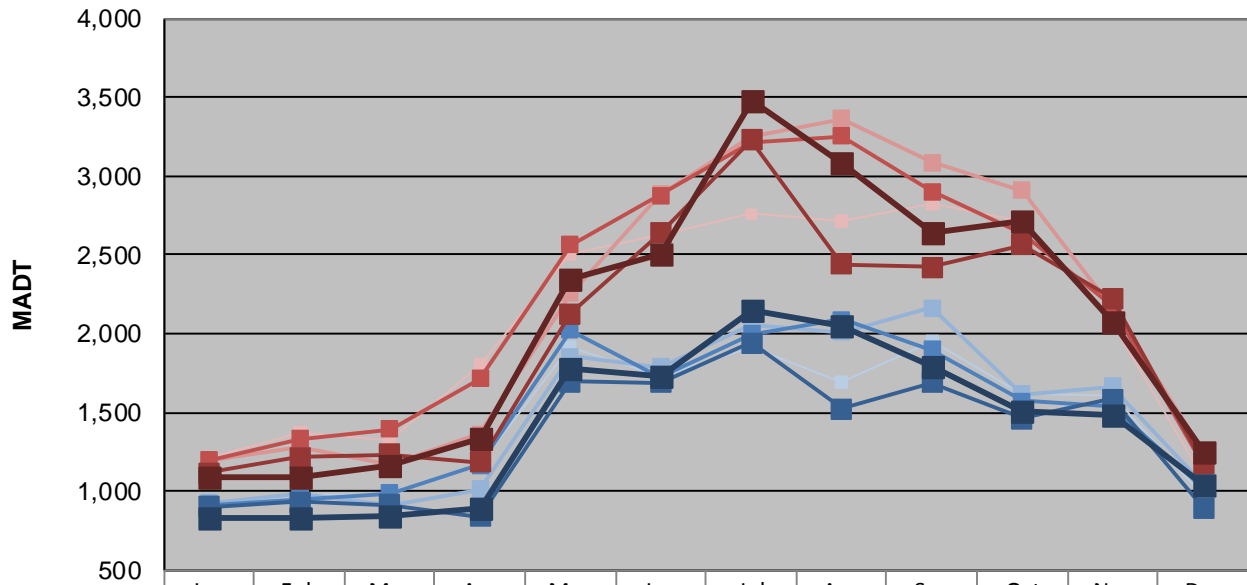
Station Measurement: VOLUME/SPEED		
Route: TH 65	Route Direction: N/S	Lanes: 2
County: Aitkin	Closest City: McGrath	
Functional Class: Rural Minor Arterial		
Location: .6 MI N OF CSAH2, N OF MCGRATH		
Ref Post: 097+00.725	True Mile: 100.432	Sequence No. 6767
Volume: 33,339		MADT: 1,075
Weekday (M-F) MADT: 1,034		Weekend (Sa-Su) MADT: 1,254



Note: Decrease in traffic August 2013 due to construction on TH 65



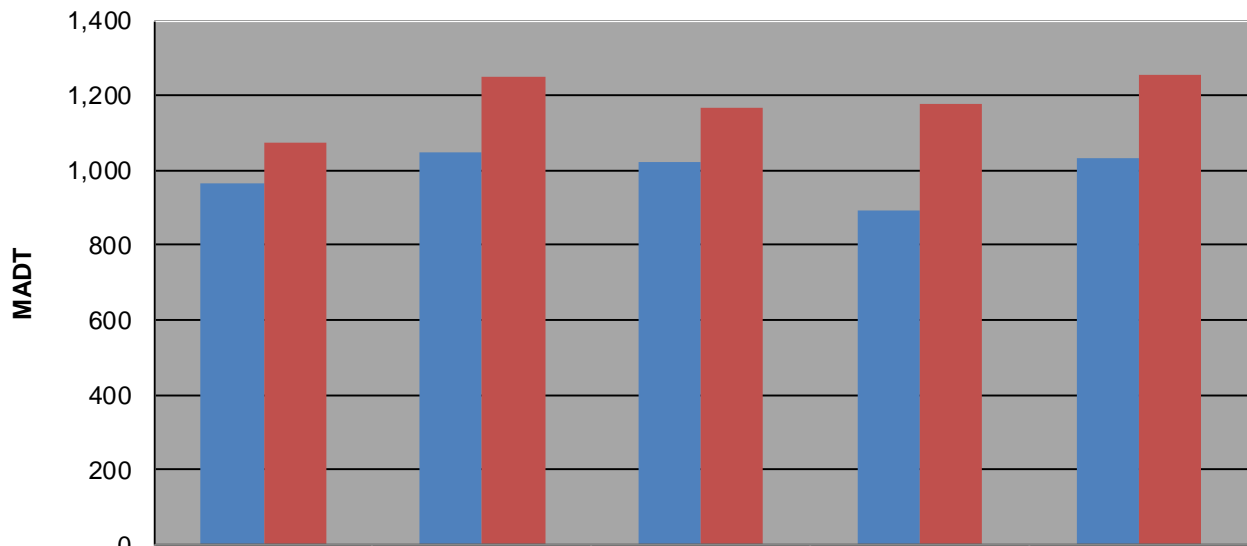
Weekday (WD)/Weekend (WE) Monthly Average Daily Traffic



	Jan	Feb	Mar	Apr	May	Jun	Jul	Aug	Sep	Oct	Nov	Dec
'10 WD	914	980	982	1,180	1,918	1,732	1,916	1,686	1,948	1,616	1,602	968
'10 WE	1,208	1,374	1,318	1,802	2,506	2,632	2,760	2,718	2,826	2,708	2,058	1,076
'11 WD	924	984	908	1,012	1,856	1,786	2,054	2,012	2,162	1,614	1,664	1,048
'11 WE	1,192	1,278	1,174	1,362	2,256	2,882	3,248	3,366	3,086	2,906	2,166	1,250
'12 WD	916	952	990	1,164	2,020	1,722	1,996	2,088	1,896	1,574	1,538	1,022
'12 WE	1,196	1,334	1,396	1,716	2,564	2,876	3,216	3,254	2,900	2,634	2,184	1,166
'13 WD	900	930	912	840	1,696	1,686	1,940	1,520	1,686	1,460	1,584	894
'13 WE	1,116	1,214	1,234	1,182	2,124	2,636	3,230	2,442	2,424	2,562	2,222	1,178
'14 WD	836	836	844	886	1,778	1,732	2,142	2,044	1,788	1,504	1,488	1,034
'14 WE	1,092	1,090	1,162	1,336	2,346	2,510	3,474	3,086	2,640	2,712	2,074	1,254

Note: 'Weekday' defined as Monday-Friday, 'Weekend' defined as Saturday-Sunday

Weekday/Weekend Monthly Average Daily Traffic ('10-'14)



	Dec-10	Dec-11	Dec-12	Dec-13	Dec-14
Weekday	968	1,048	1,022	894	1,034
Weekend	1,076	1,250	1,166	1,178	1,254