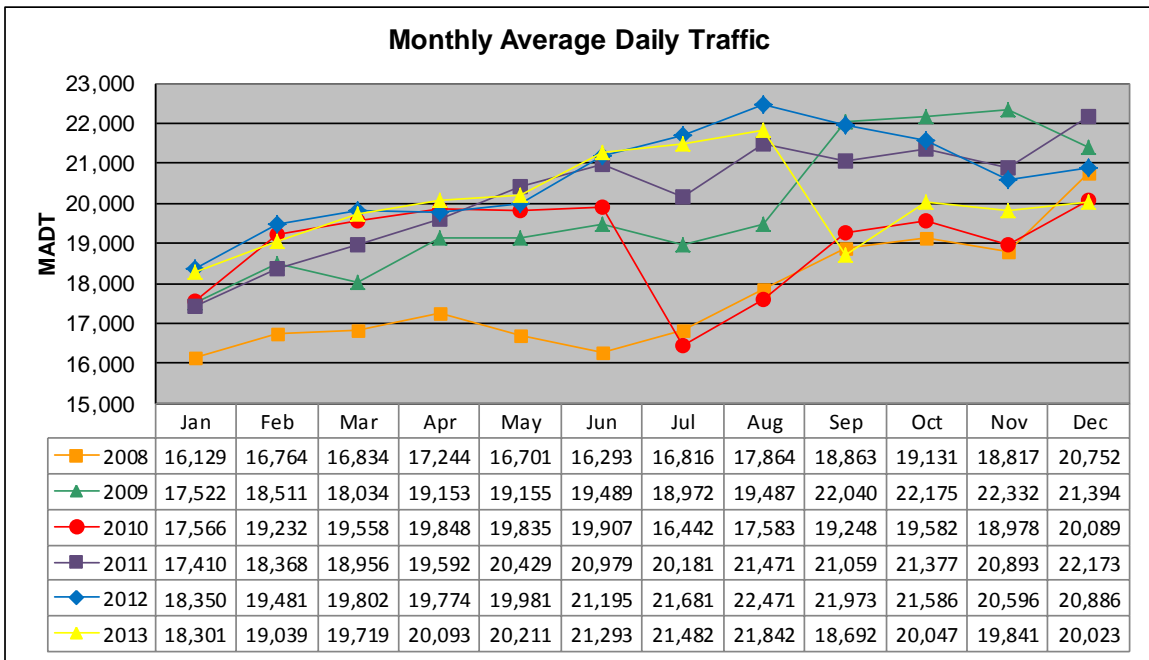


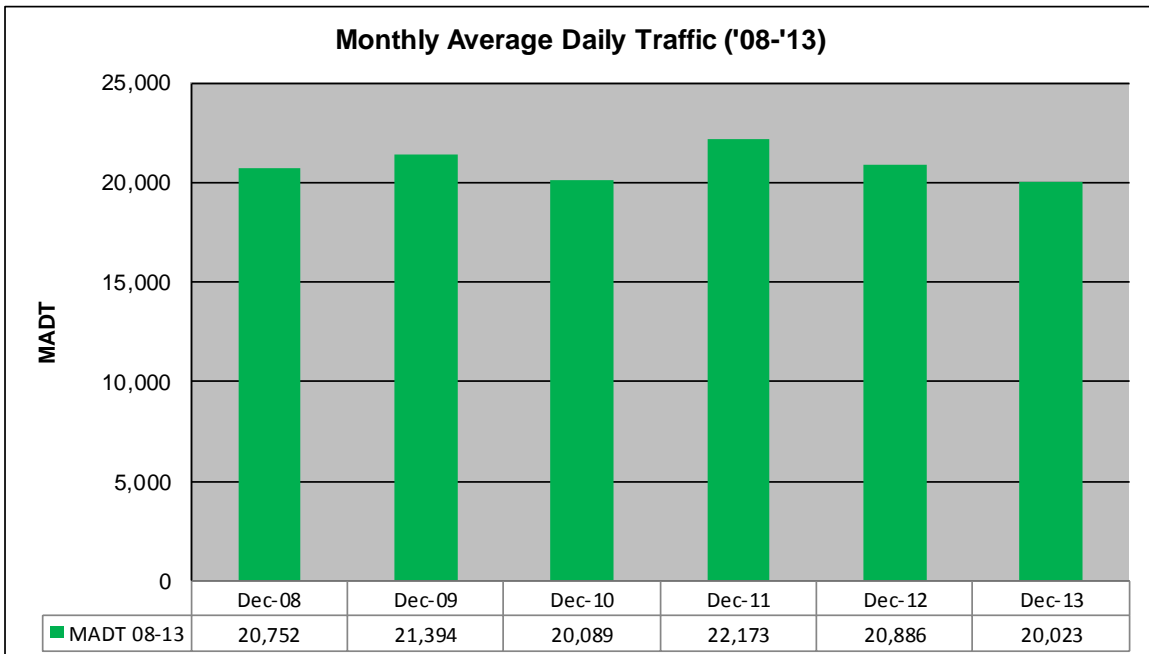
MONTHLY REPORT, STATION NO. 464 (ATR)

DECEMBER 2013

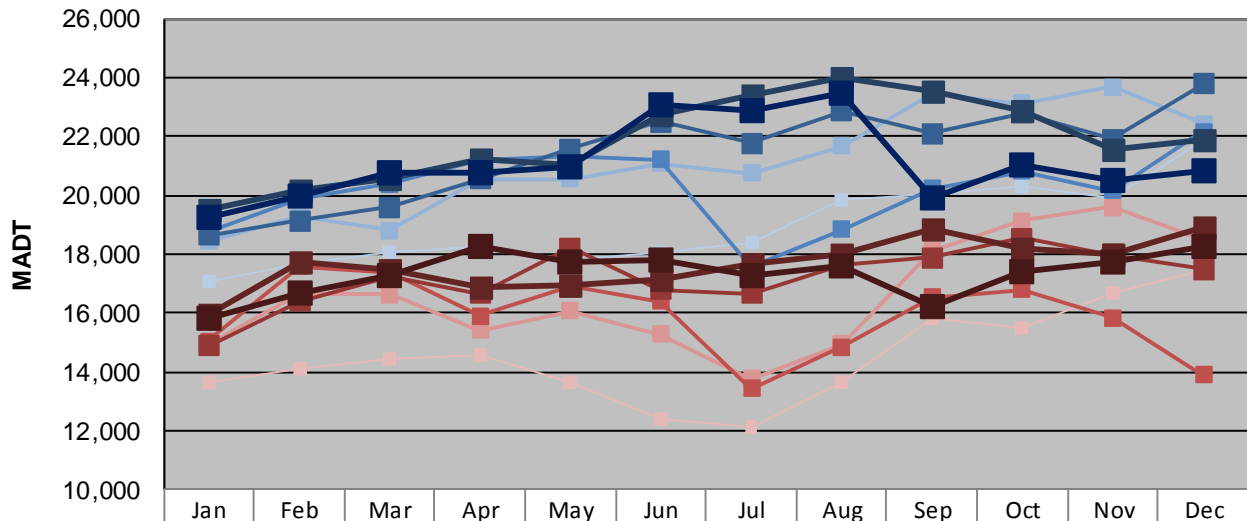
Station Measurement: VOLUME/SPEED/CLASS		
Route: CSAH 20	Route Direction: E/W	Lanes: 4
County: Ramsey	Closest City: Maplewood	
Functional Class: Urban Minor Arterial		
Location: E OF TH61 IN MAPLEWOOD		
Ref Post: 000+00.870	True Mile: 8.986	Sequence No. 9912
Volume: 620,717		MADT: 20,023
Weekday (M-F) MADT: 20,852		Weekend (Sa-Su) MADT: 18,236



Note: Decrease in traffic January to November 2008, July to November 2010, and September 2013 due to construction on TH 61



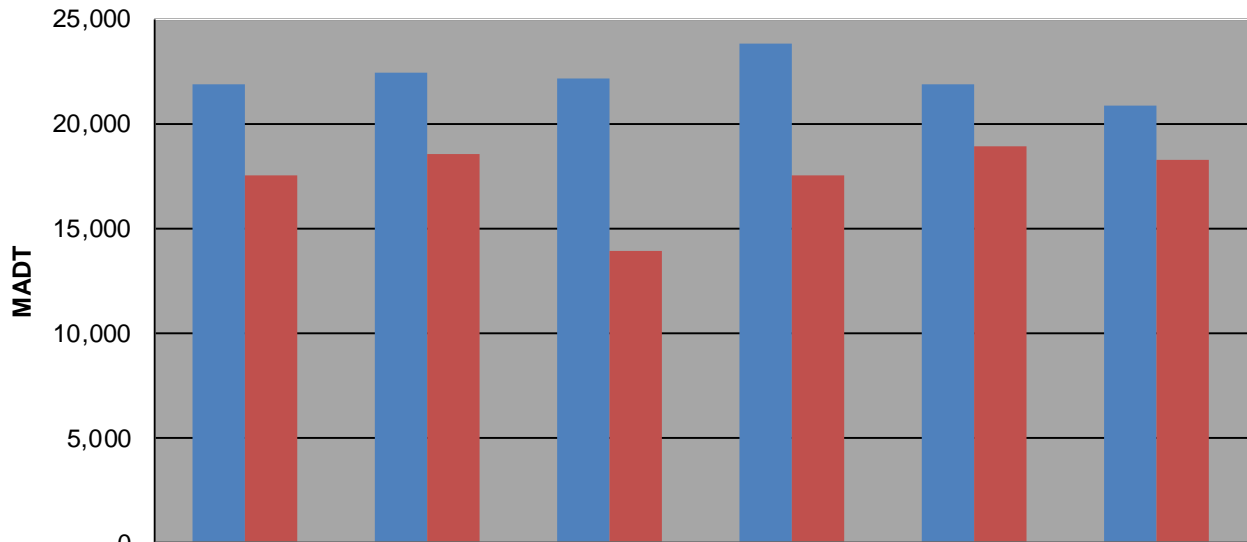
Weekday (WD)/Weekend (WE) Monthly Average Daily Traffic



	Jan	Feb	Mar	Apr	May	Jun	Jul	Aug	Sep	Oct	Nov	Dec
'08 WD	17,068	17,686	18,040	18,246	17,790	18,038	18,380	19,820	20,054	20,328	19,884	21,862
'08 WE	13,616	14,090	14,424	14,536	13,618	12,404	12,128	13,676	15,806	15,488	16,686	17,488
'09 WD	18,446	19,264	18,818	20,536	20,548	21,066	20,740	21,666	23,436	23,108	23,692	22,412
'09 WE	14,902	16,628	16,632	15,422	16,056	15,276	13,748	14,950	18,116	19,142	19,604	18,520
'10 WD	18,750	19,900	20,386	21,192	21,330	21,204	17,542	18,824	20,236	20,808	20,154	22,160
'10 WE	15,034	17,566	17,394	15,912	16,926	16,396	13,416	14,850	16,522	16,782	15,850	13,886
'11 WD	18,650	19,148	19,602	20,562	21,566	22,484	21,758	22,842	22,090	22,786	21,906	23,780
'11 WE	14,884	16,392	17,250	16,668	18,194	16,806	16,648	17,652	17,890	18,526	17,976	17,494
'12 WD	19,524	20,188	20,556	21,194	21,008	22,726	23,372	23,980	23,542	22,888	21,540	21,880
'12 WE	15,930	17,750	17,494	16,896	16,958	17,168	17,682	17,964	18,834	18,160	17,988	18,938
'13 WD	19,238	19,980	20,760	20,780	20,958	23,056	22,878	23,462	19,932	21,002	20,488	20,852
'13 WE	15,824	16,688	17,300	18,244	17,718	17,768	17,296	17,612	16,218	17,424	17,712	18,236

Note: 'Weekday' defined as Monday-Friday, 'Weekend' defined as Saturday-Sunday

Weekday/Weekend Monthly Average Daily Traffic ('08-'13)



	Dec-08	Dec-09	Dec-10	Dec-11	Dec-12	Dec-13
Weekday	21,862	22,412	22,160	23,780	21,880	20,852
Weekend	17,488	18,520	13,886	17,494	18,938	18,236