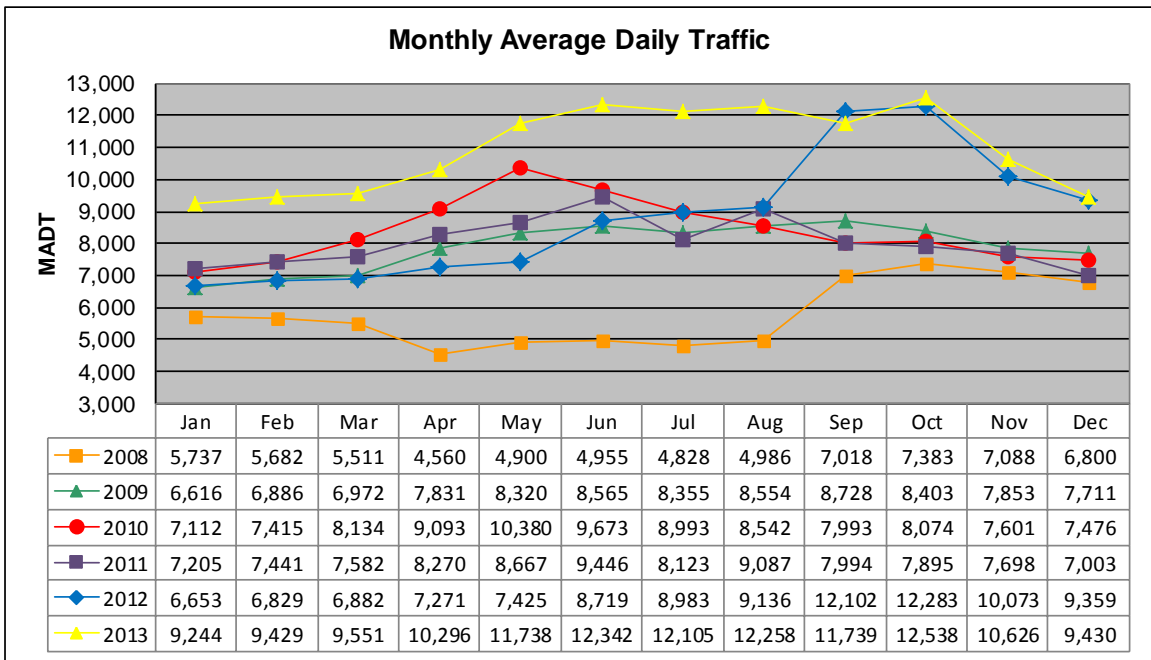


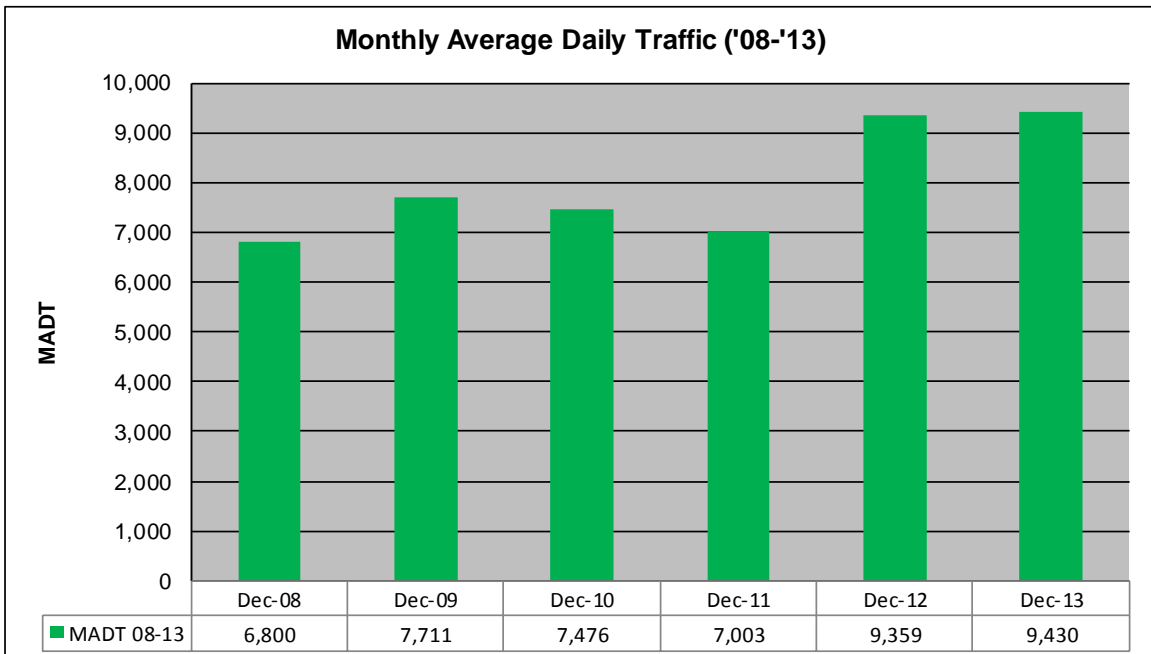
MONTHLY REPORT, STATION NO. 422 (ATR)

DECEMBER 2013

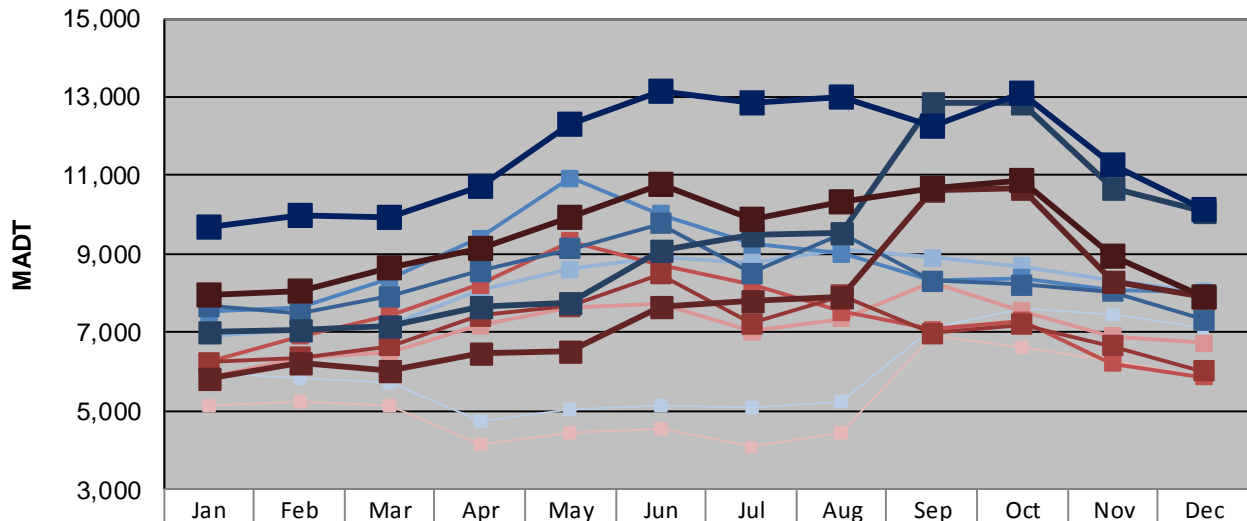
| | | |
|--|----------------------|------------------------------------|
| Station Measurement: VOLUME/SPEED/CLASS | | |
| Route: CSAH 14 | Route Direction: E/W | Lanes: 2 |
| County: Anoka | Closest City: Blaine | |
| Functional Class: Urban Other Principal Arterial | | |
| Location: .7 MI W OF CSAH17 (LEXINGTON AVE NE) IN BLAINE | | |
| Ref Post: 010+00.100 | True Mile: 10.1 | Sequence No. 9893 |
| Volume: 292,317 | | MADT: 9,430 |
| Weekday (M-F) MADT: 10,152 | | Weekend (Sa-Su) MADT: 7,908 |



Note: Decrease in traffic January to September 2008 due to construction on TH 65 & CSAH 14 and April/May 2012 due to construction on a new turn lane... Increase in traffic beginning September 2012 due to the new lane



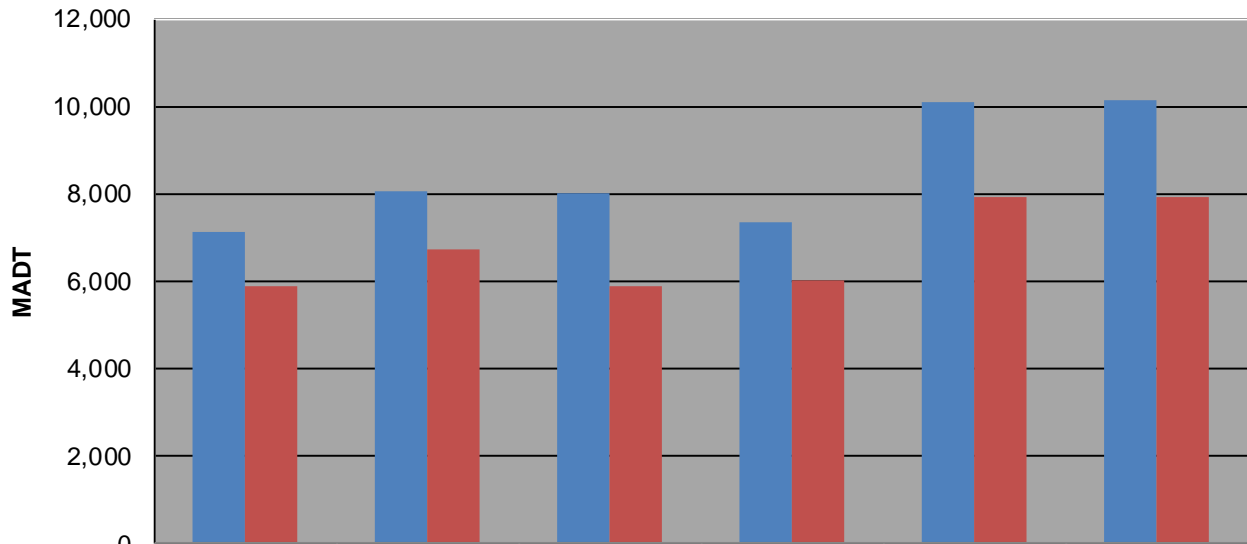
Weekday (WD)/Weekend (WE) Monthly Average Daily Traffic



| | Jan | Feb | Mar | Apr | May | Jun | Jul | Aug | Sep | Oct | Nov | Dec |
|--------|-------|-------|-------|--------|--------|--------|--------|--------|--------|--------|--------|--------|
| '08 WD | 5,960 | 5,834 | 5,712 | 4,720 | 5,052 | 5,132 | 5,078 | 5,230 | 7,106 | 7,630 | 7,486 | 7,124 |
| '08 WE | 5,144 | 5,232 | 5,136 | 4,138 | 4,450 | 4,568 | 4,086 | 4,436 | 6,916 | 6,620 | 6,292 | 5,866 |
| '09 WD | 6,896 | 7,098 | 7,204 | 8,078 | 8,608 | 8,912 | 8,796 | 9,142 | 8,906 | 8,694 | 8,310 | 8,046 |
| '09 WE | 5,858 | 6,358 | 6,514 | 7,182 | 7,646 | 7,714 | 7,038 | 7,354 | 8,268 | 7,554 | 6,904 | 6,730 |
| '10 WD | 7,532 | 7,622 | 8,400 | 9,392 | 10,926 | 10,018 | 9,244 | 9,000 | 8,308 | 8,394 | 8,098 | 8,010 |
| '10 WE | 6,228 | 6,902 | 7,450 | 8,212 | 9,326 | 8,720 | 8,220 | 7,516 | 7,092 | 7,306 | 6,220 | 5,862 |
| '11 WD | 7,670 | 7,474 | 7,910 | 8,566 | 9,128 | 9,778 | 8,522 | 9,520 | 8,308 | 8,226 | 8,046 | 7,338 |
| '11 WE | 6,234 | 6,366 | 6,656 | 7,434 | 7,678 | 8,478 | 7,216 | 7,940 | 6,986 | 7,192 | 6,658 | 6,014 |
| '12 WD | 7,042 | 7,072 | 7,174 | 7,672 | 7,744 | 9,114 | 9,508 | 9,542 | 12,828 | 12,862 | 10,690 | 10,082 |
| '12 WE | 5,810 | 6,234 | 6,040 | 6,454 | 6,536 | 7,668 | 7,790 | 7,900 | 10,648 | 10,686 | 8,320 | 7,908 |
| '13 WD | 9,708 | 9,970 | 9,940 | 10,716 | 12,308 | 13,132 | 12,832 | 12,986 | 12,260 | 13,110 | 11,294 | 10,152 |
| '13 WE | 7,966 | 8,080 | 8,666 | 9,166 | 9,950 | 10,762 | 9,880 | 10,352 | 10,678 | 10,892 | 8,954 | 7,908 |

Note: 'Weekday' defined as Monday-Friday, 'Weekend' defined as Saturday-Sunday

Weekday/Weekend Monthly Average Daily Traffic ('08-'13)



| | Dec-08 | Dec-09 | Dec-10 | Dec-11 | Dec-12 | Dec-13 |
|---------|--------|--------|--------|--------|--------|--------|
| Weekday | 7,124 | 8,046 | 8,010 | 7,338 | 10,082 | 10,152 |
| Weekend | 5,866 | 6,730 | 5,862 | 6,014 | 7,908 | 7,908 |