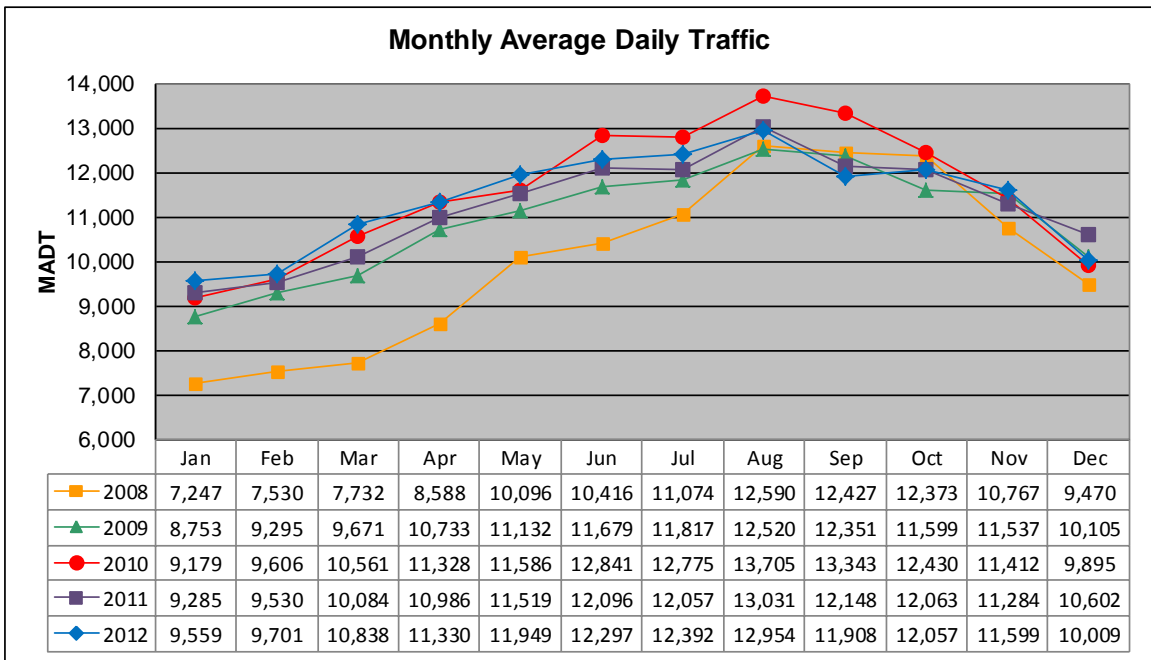


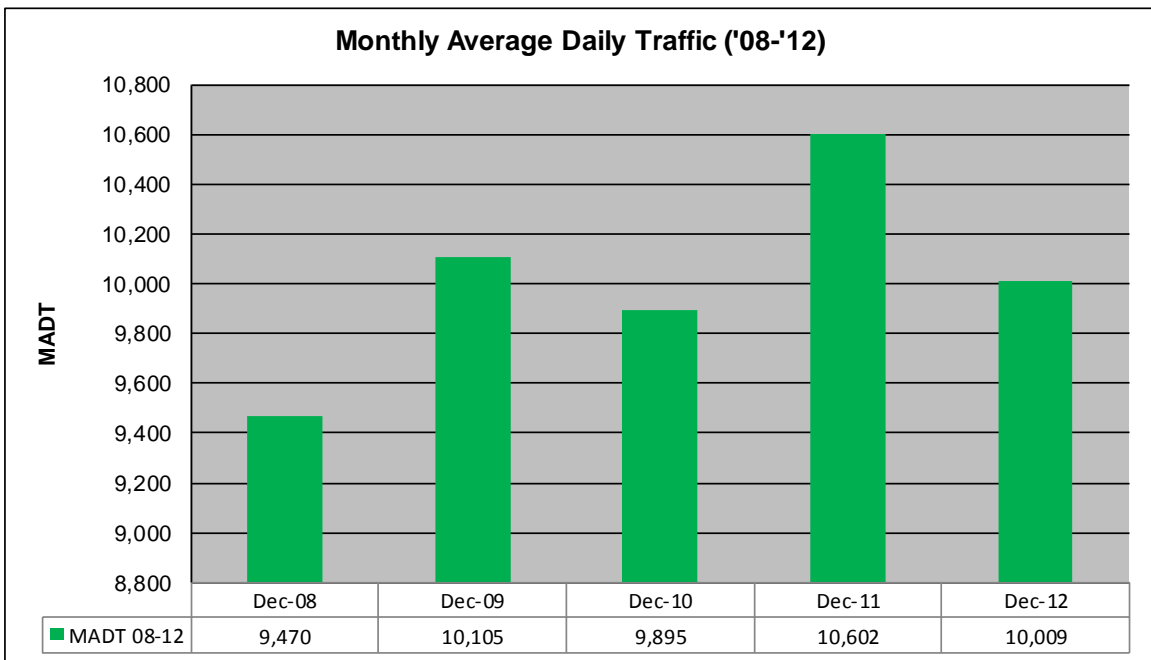
MONTHLY REPORT, STATION NO. 381 (ATR)

DECEMBER 2012

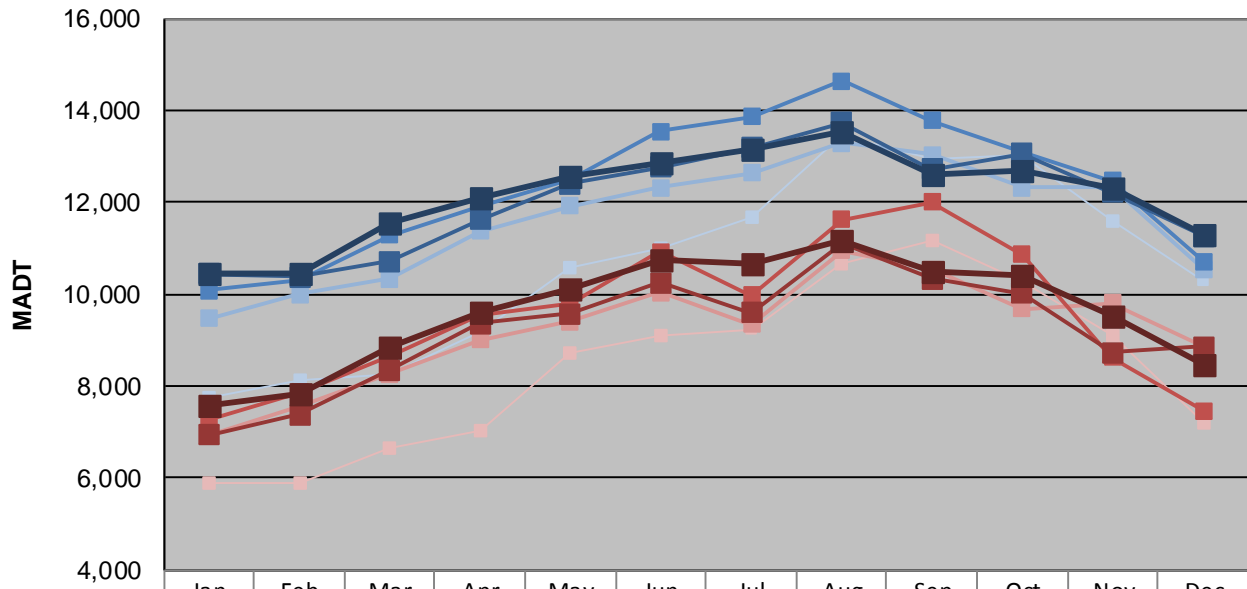
Station Measurement: VOLUME/SPEED/CLASS		
Route: TH 212	Route Direction: E/W	Lanes: 2
County: Carver		Closest City: Cologne
Functional Class: Rural Principal Arterial - Other		
Location: 1.7 MI W OF CSAH51, W OF COLOGNE		
Ref Post: 133+00.500	True Mile: 133.195	Sequence No. 9870
Volume: 310,272		MADT: 10,009
Weekday (M-F) MADT: 11,278		Weekend (Sa-Su) MADT: 8,472



Note: Increased traffic beginning August 2008 due to new TH 212 being opened



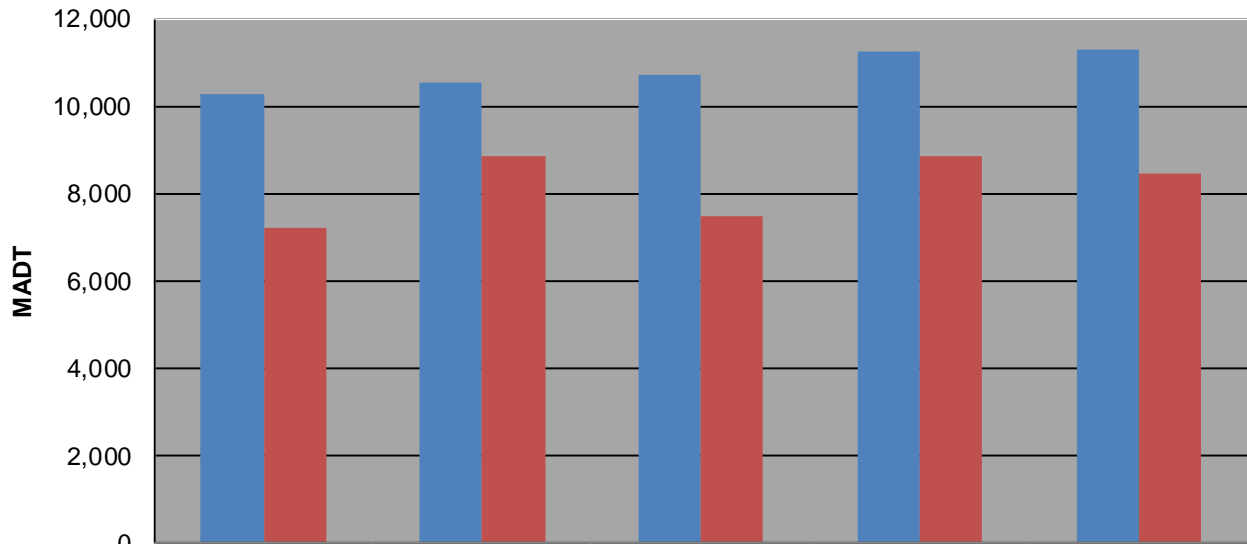
Weekday (WD)/Weekend (WE) Monthly Average Daily Traffic



	Jan	Feb	Mar	Apr	May	Jun	Jul	Aug	Sep	Oct	Nov	Dec
'08 WD	7,746	8,116	8,260	9,166	10,584	11,000	11,694	13,450	12,948	13,026	11,590	10,292
'08 WE	5,904	5,886	6,672	7,022	8,722	9,100	9,234	10,666	11,182	10,300	9,120	7,210
'09 WD	9,466	9,992	10,342	11,364	11,908	12,330	12,628	13,286	13,028	12,320	12,348	10,538
'09 WE	6,936	7,552	8,264	9,000	9,398	10,036	9,340	10,944	10,544	9,678	9,800	8,860
'10 WD	10,076	10,304	11,282	11,916	12,486	13,548	13,860	14,644	13,784	13,072	12,458	10,714
'10 WE	7,282	7,862	8,668	9,564	9,810	10,920	9,968	11,630	12,004	10,858	8,632	7,466
'11 WD	10,436	10,380	10,708	11,620	12,398	12,770	13,178	13,740	12,712	13,054	12,224	11,264
'11 WE	6,946	7,376	8,360	9,372	9,582	10,258	9,596	11,112	10,326	10,018	8,732	8,848
'12 WD	10,452	10,438	11,562	12,102	12,578	12,862	13,156	13,522	12,612	12,704	12,312	11,278
'12 WE	7,588	7,834	8,858	9,598	10,132	10,764	10,670	11,184	10,498	10,392	9,512	8,472

Note: 'Weekday' defined as Monday-Friday, 'Weekend' defined as Saturday-Sunday

Weekday/Weekend Monthly Average Daily Traffic ('08-'12)



	Dec-08	Dec-09	Dec-10	Dec-11	Dec-12
Weekday	10,292	10,538	10,714	11,264	11,278
Weekend	7,210	8,860	7,466	8,848	8,472