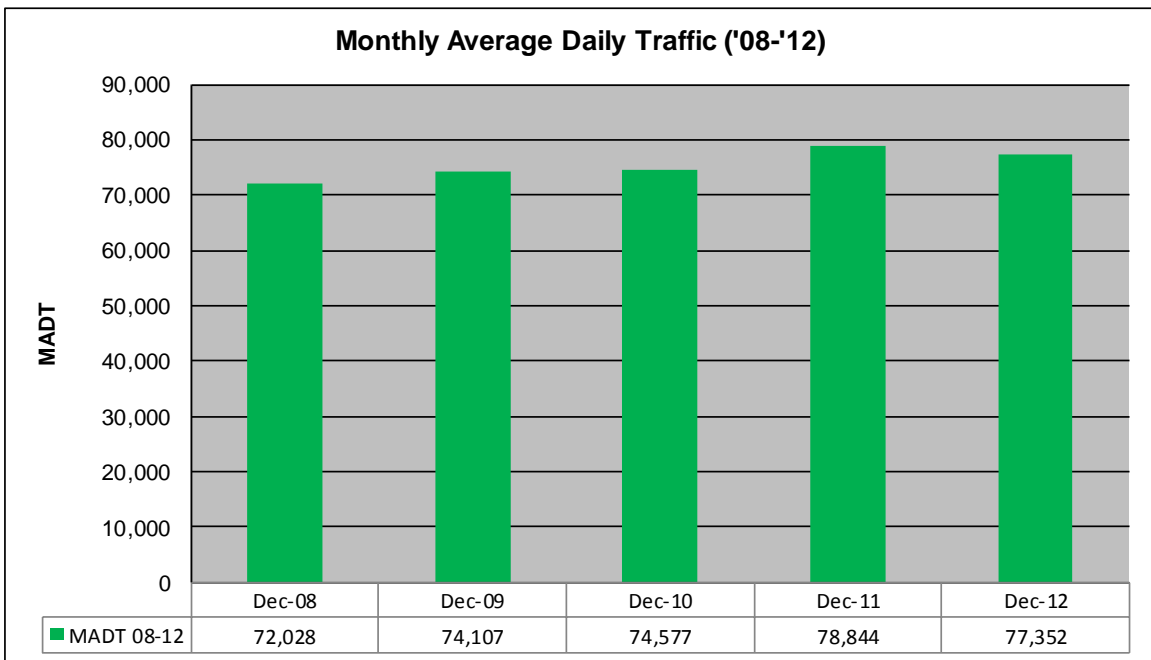
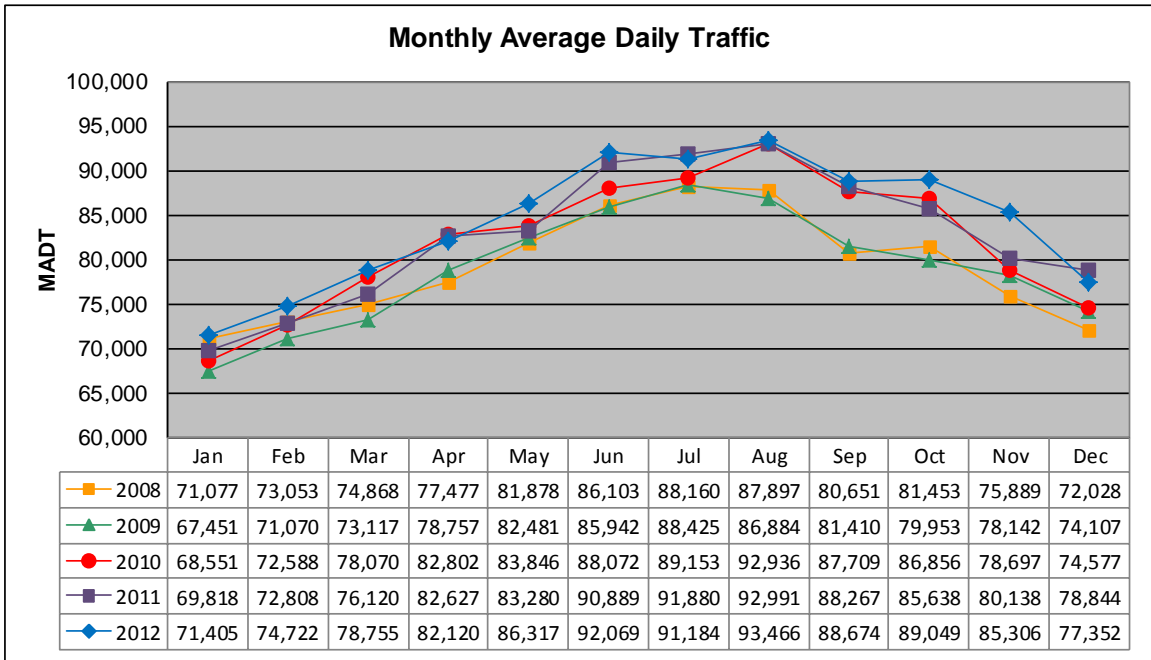


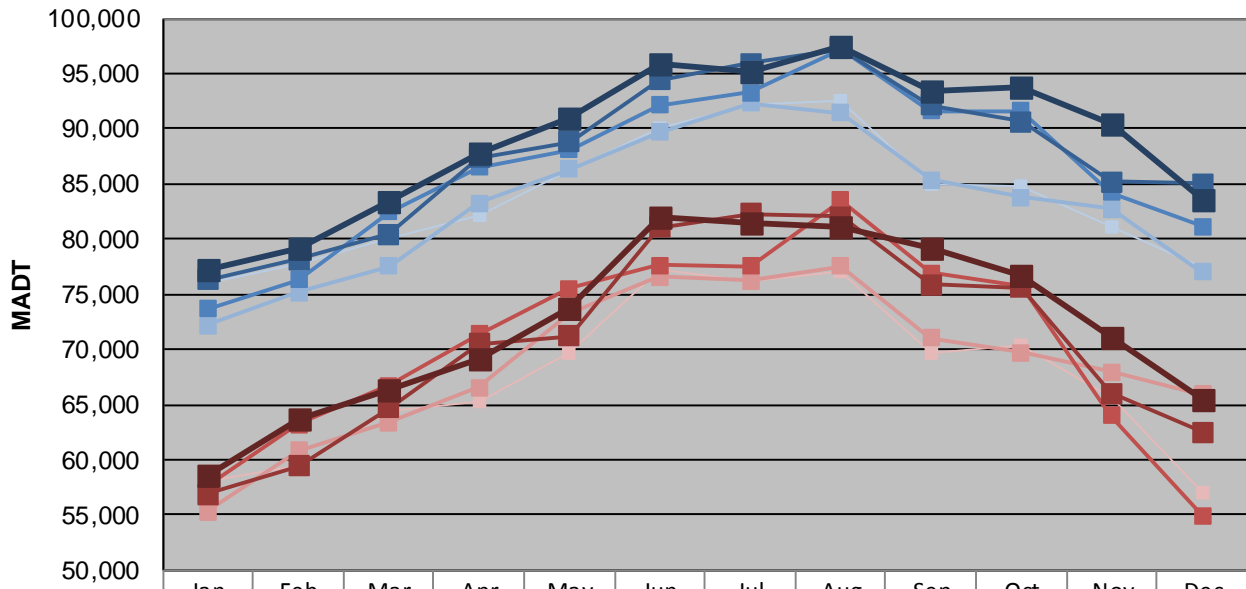
MONTHLY REPORT, STATION NO. 354 (ATR)

DECEMBER 2012

Station Measurement: VOLUME		
Route: I-94	Route Direction: E/W	Lanes: 6
County: Washington		Closest City: Woodbury
Functional Class: Urban Principal Arterial - Interstate		
Location: W OF MSAS127 (COTTAGE GROVE DR) IN WOODBURY		
Ref Post: 252+00.500	True Mile: 253.096	Sequence No. 9861
Volume: 2,397,915		MADT: 77,352
Weekday (M-F) MADT: 83,548		Weekend (Sa-Su) MADT: 65,438



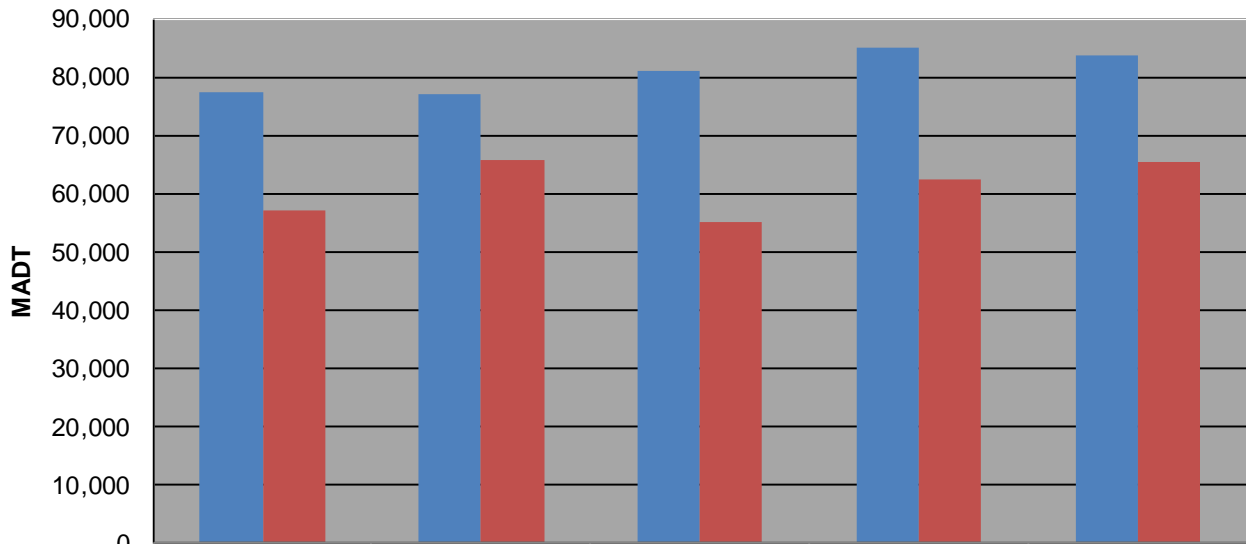
Weekday (WD)/Weekend (WE) Monthly Average Daily Traffic



	Jan	Feb	Mar	Apr	May	Jun	Jul	Aug	Sep	Oct	Nov	Dec
'08 WD	75,922	77,760	80,088	82,106	86,270	90,082	92,238	92,594	85,060	84,870	81,062	77,334
'08 WE	58,018	59,502	64,394	65,304	69,672	77,234	76,238	77,050	69,724	70,402	65,544	57,066
'09 WD	72,186	75,154	77,554	83,288	86,342	89,720	92,278	91,452	85,404	83,748	82,766	77,000
'09 WE	55,292	60,860	63,374	66,566	73,286	76,558	76,222	77,552	71,064	69,716	67,928	65,892
'10 WD	73,630	76,338	82,478	86,492	88,134	92,122	93,266	97,130	91,636	91,594	84,242	81,188
'10 WE	57,646	63,218	66,716	71,382	75,500	77,602	77,566	83,524	76,940	75,690	64,020	54,954
'11 WD	76,276	78,154	80,408	87,378	88,804	94,438	95,910	97,284	92,118	90,670	85,182	85,008
'11 WE	56,844	59,416	64,668	70,464	71,172	81,102	82,308	82,006	75,894	75,608	66,038	62,464
'12 WD	77,226	79,142	83,328	87,846	90,914	95,812	95,182	97,380	93,396	93,838	90,398	83,548
'12 WE	58,538	63,762	66,240	69,226	73,726	82,062	81,484	81,182	79,232	76,772	71,048	65,438

Note: 'Weekday' defined as Monday-Friday, 'Weekend' defined as Saturday-Sunday

Weekday/Weekend Monthly Average Daily Traffic ('08-'12)



	Dec-08	Dec-09	Dec-10	Dec-11	Dec-12
Weekday	77,334	77,000	81,188	85,008	83,548
Weekend	57,066	65,892	54,954	62,464	65,438