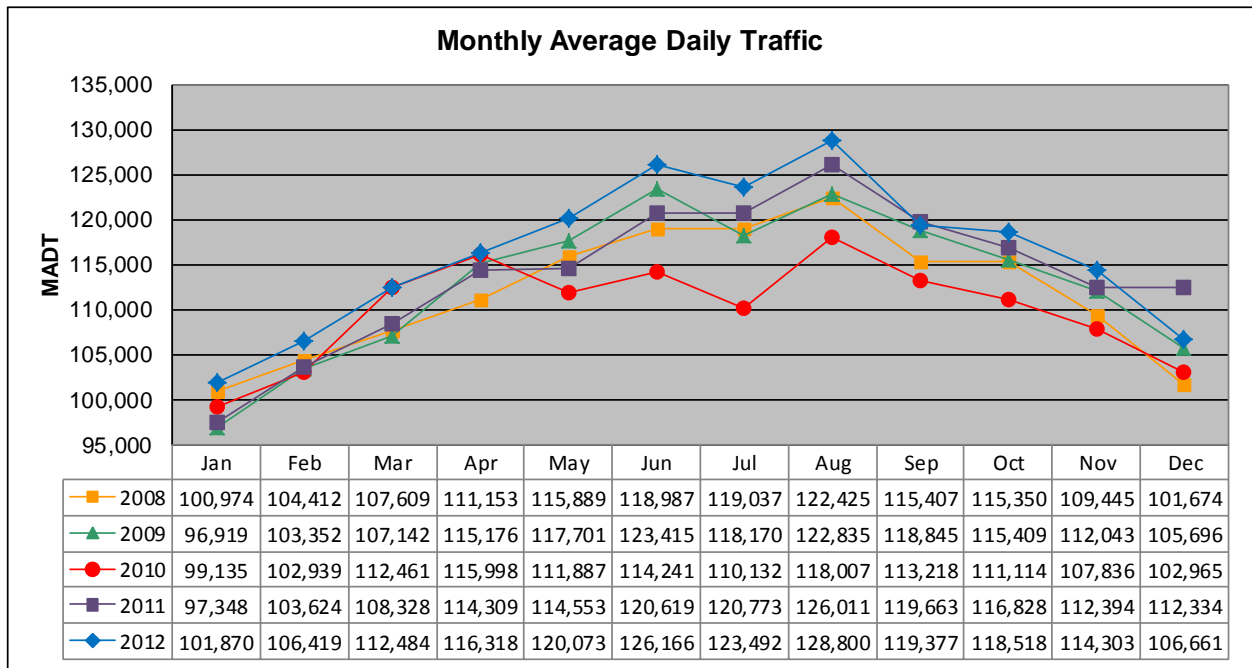


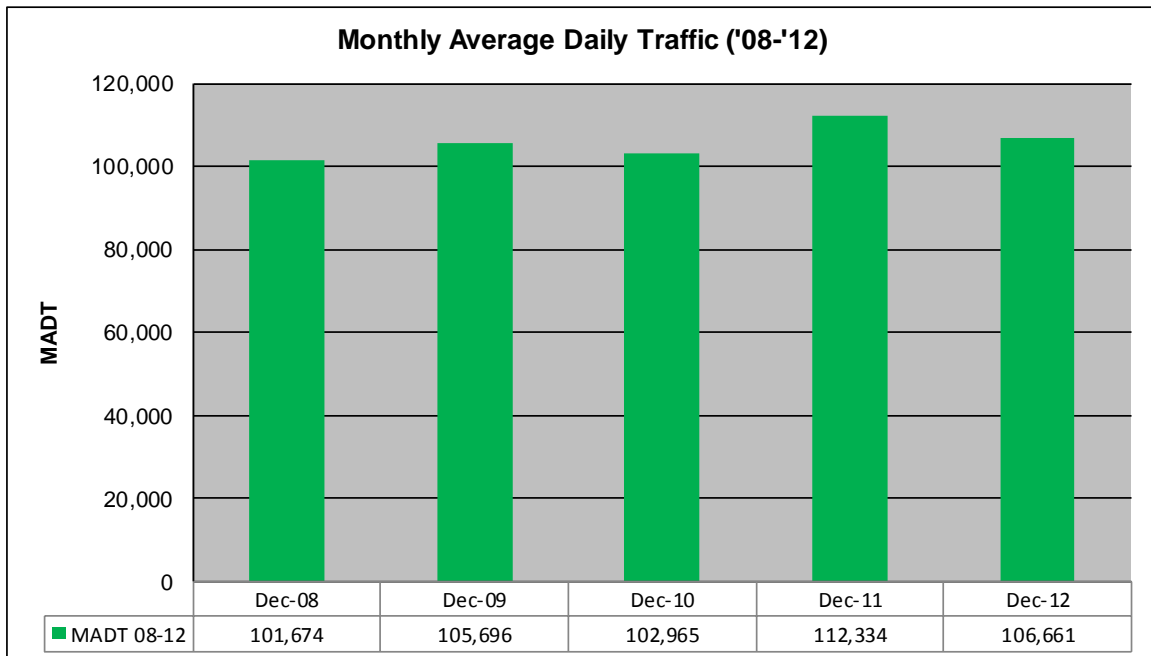
# MONTHLY REPORT, STATION NO. 342 (ATR)

## DECEMBER 2012

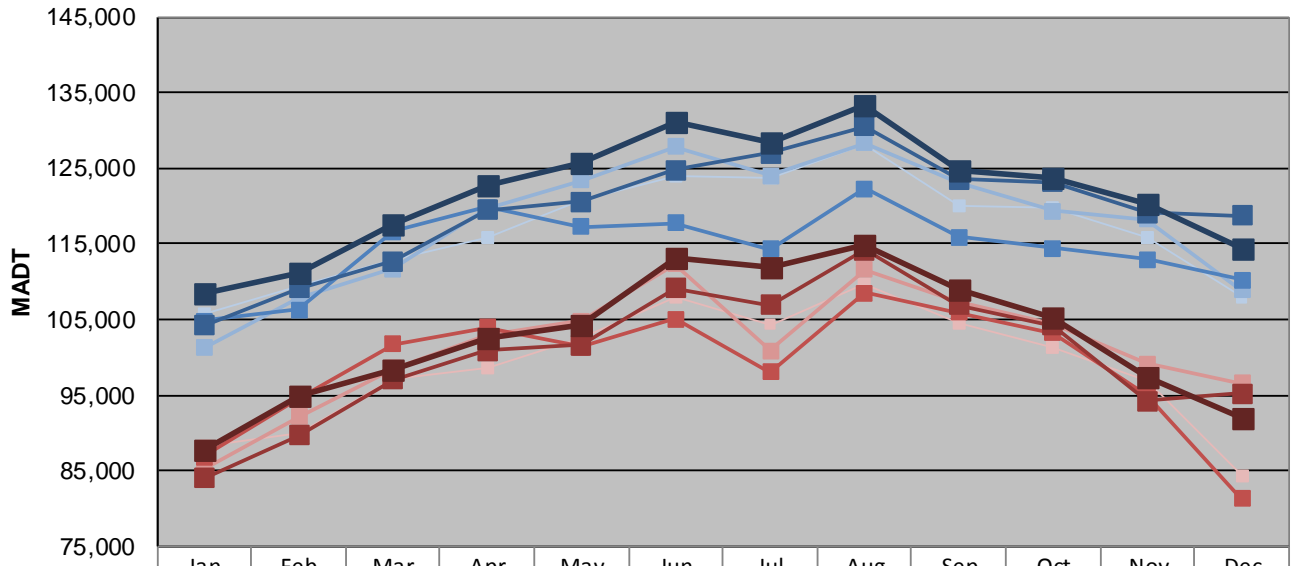
|   |                      |                                     |
|---|----------------------|-------------------------------------|
| Station Measurement: VOLUME                             |                      |                                     |
| Route: I-94   | Route Direction: E/W | Lanes: 6                            |
| County: Hennepin  |                      | Closest City: Maple Grove           |
| Functional Class: Urban Principal Arterial - Interstate |                      |                                     |
| Location: S OF CR30 (93RD AVE N) IN MAPLE GROVE         |                      |                                     |
| Ref Post: 214+00.030                                    | True Mile: 214.71    | Sequence No. 9859                   |
| <b>Volume: 3,306,486</b>                                |                      | <b>MADT: 106,661</b>                |
| <b>Weekday (M-F) MADT: 114,256</b>                      |                      | <b>Weekend (Sa-Su) MADT: 91,962</b> |



Note: Decrease in traffic May to July 2010 due to construction on I-94



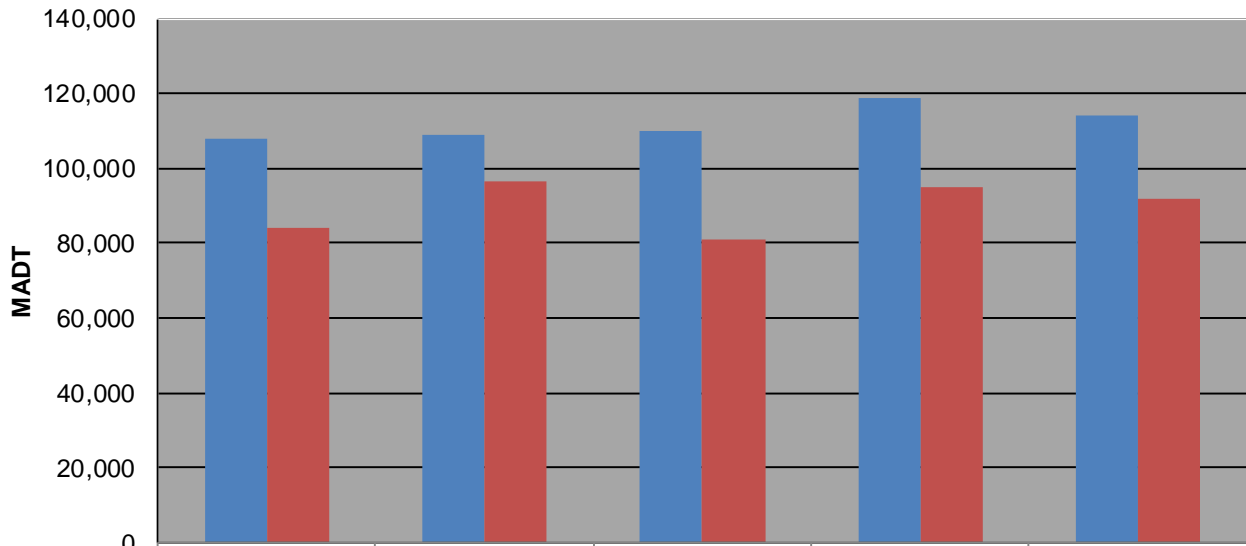
### Weekday (WD)/Weekend (WE) Monthly Average Daily Traffic



|        | Jan     | Feb     | Mar     | Apr     | May     | Jun     | Jul     | Aug     | Sep     | Oct     | Nov     | Dec     |
|--------|---------|---------|---------|---------|---------|---------|---------|---------|---------|---------|---------|---------|
| '08 WD | 105,718 | 109,354 | 112,914 | 115,782 | 120,770 | 124,030 | 123,834 | 128,226 | 119,946 | 119,668 | 115,736 | 107,976 |
| '08 WE | 88,312  | 89,962  | 97,234  | 98,542  | 102,454 | 107,888 | 104,366 | 109,612 | 104,526 | 101,424 | 96,866  | 84,304  |
| '09 WD | 101,248 | 107,822 | 111,710 | 119,738 | 123,400 | 127,870 | 123,992 | 128,358 | 123,216 | 119,304 | 118,176 | 108,866 |
| '09 WE | 85,132  | 92,178  | 98,506  | 102,816 | 104,786 | 112,270 | 100,852 | 111,550 | 107,388 | 104,266 | 99,088  | 96,542  |
| '10 WD | 104,824 | 106,298 | 116,672 | 119,892 | 117,240 | 117,770 | 114,268 | 122,356 | 115,848 | 114,450 | 112,890 | 110,170 |
| '10 WE | 86,840  | 94,544  | 101,794 | 103,954 | 101,372 | 105,056 | 98,012  | 108,556 | 105,914 | 103,240 | 94,902  | 81,256  |
| '11 WD | 104,160 | 109,174 | 112,636 | 119,406 | 120,536 | 124,712 | 127,024 | 130,598 | 123,560 | 123,216 | 119,120 | 118,692 |
| '11 WE | 83,982  | 89,722  | 97,034  | 100,868 | 101,646 | 109,132 | 106,946 | 114,196 | 106,888 | 104,168 | 94,212  | 95,158  |
| '12 WD | 108,440 | 111,240 | 117,462 | 122,720 | 125,622 | 131,224 | 128,310 | 133,324 | 124,590 | 123,670 | 120,196 | 114,256 |
| '12 WE | 87,712  | 94,874  | 98,452  | 102,420 | 104,280 | 113,170 | 111,858 | 114,874 | 108,952 | 105,288 | 97,450  | 91,962  |

Note: 'Weekday' defined as Monday-Friday, 'Weekend' defined as Saturday-Sunday

### Weekday/Weekend Monthly Average Daily Traffic ('08-'12)



|         | Dec-08  | Dec-09  | Dec-10  | Dec-11  | Dec-12  |
|---------|---------|---------|---------|---------|---------|
| Weekday | 107,976 | 108,866 | 110,170 | 118,692 | 114,256 |
| Weekend | 84,304  | 96,542  | 81,256  | 95,158  | 91,962  |