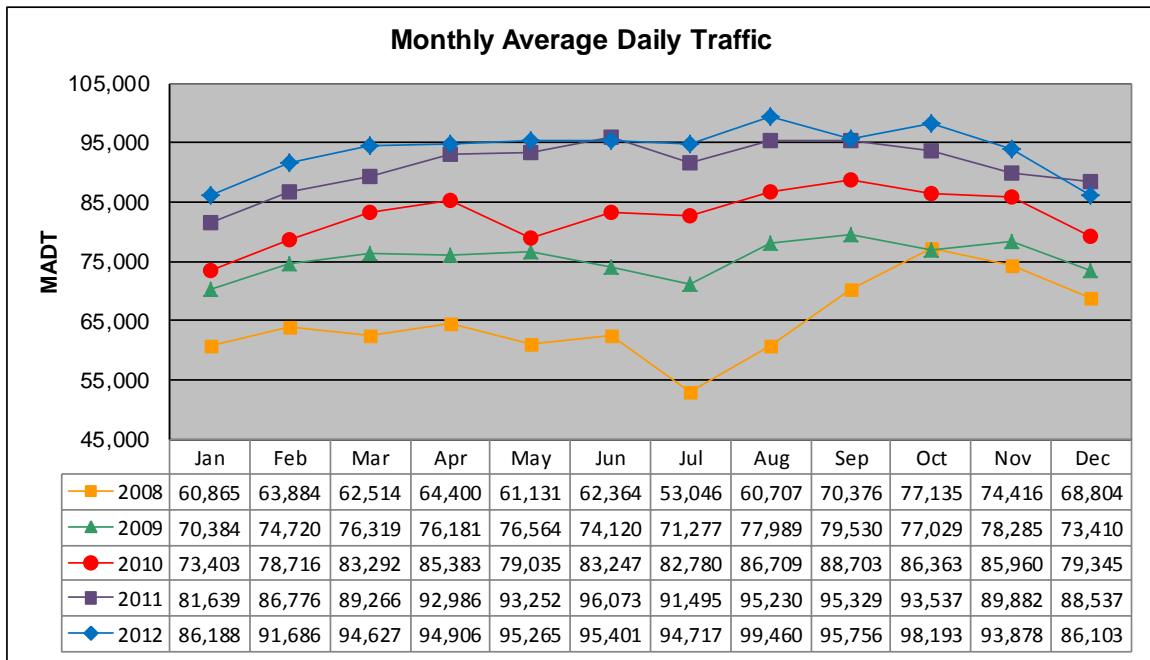


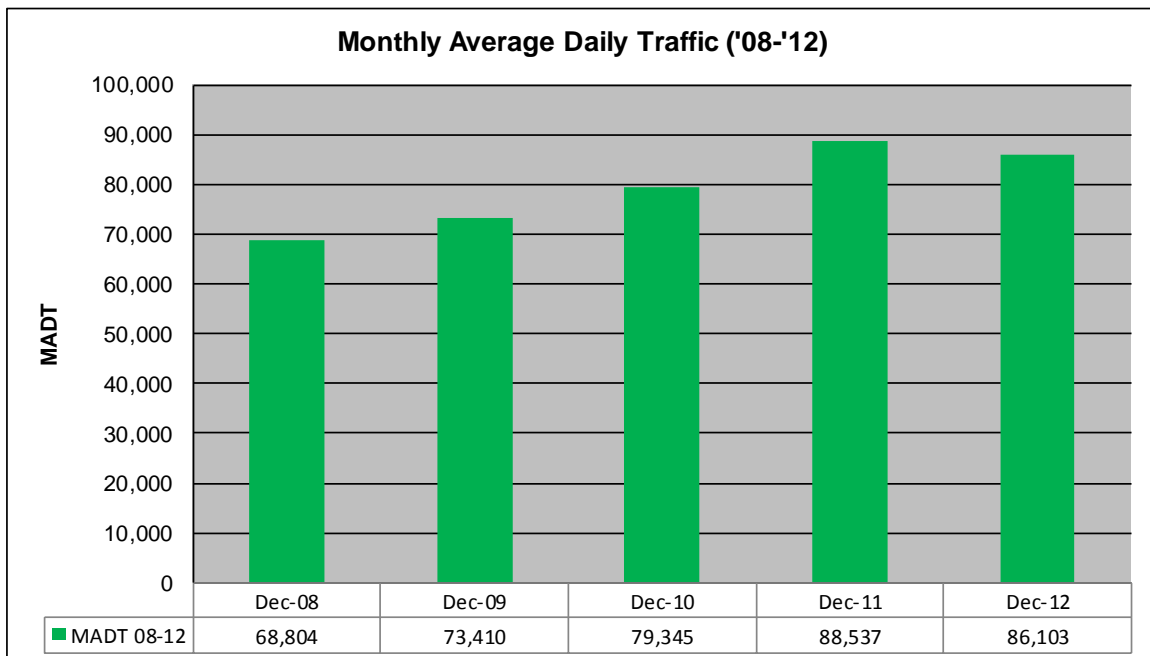
MONTHLY REPORT, STATION NO. 329 (ATR)

DECEMBER 2012

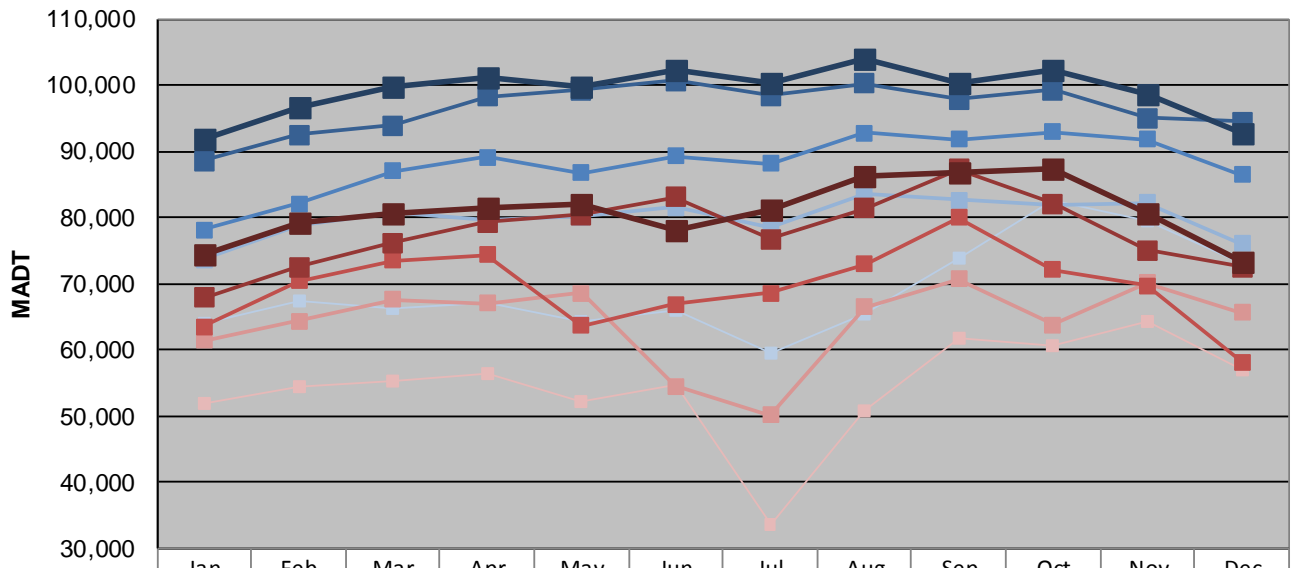
Station Measurement: VOLUME		
Route: I-35W	Route Direction: N/S	Lanes: 4
County: Hennepin		Closest City: Minneapolis
Functional Class: Urban Principal Arterial - Interstate		
Location: AT FRANKLIN AVE IN MINNEAPOLIS		
Ref Post: 016+00.680	True Mile: 16.713	Sequence No. 9851
Volume: 2,669,197		MADT: 86,103
Weekday (M-F) MADT: 92,600		Weekend (Sa-Su) MADT: 73,322



Note: Decrease in traffic 2008 due to I-35W bridge collapse and construction on TH 62... Although traffic increased from August 2008 to December 2010, volumes were lower than expected due to construction on I-35W and TH 62



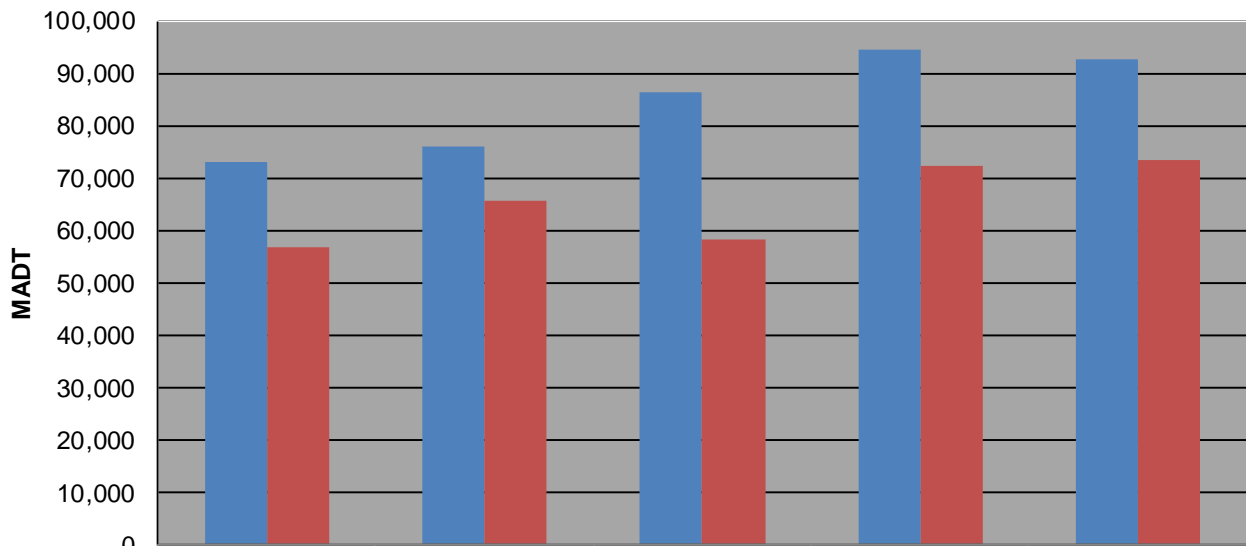
Weekday (WD)/Weekend (WE) Monthly Average Daily Traffic



	Jan	Feb	Mar	Apr	May	Jun	Jul	Aug	Sep	Oct	Nov	Dec
'08 WD	64,032	67,314	66,120	67,232	64,390	65,908	59,580	65,396	73,858	82,598	79,432	73,054
'08 WE	51,788	54,398	55,402	56,508	52,156	54,712	33,592	50,722	61,686	60,640	64,382	56,834
'09 WD	73,624	78,856	80,656	79,486	80,108	81,476	78,416	83,572	82,682	82,000	82,248	76,098
'09 WE	61,414	64,382	67,556	66,998	68,620	54,458	50,160	66,456	70,740	63,792	70,142	65,614
'10 WD	78,096	82,048	86,962	89,154	86,764	89,258	88,106	92,770	91,742	92,876	91,866	86,482
'10 WE	63,564	70,390	73,548	74,326	63,606	66,826	68,514	72,936	79,972	72,130	69,724	58,100
'11 WD	88,592	92,444	93,910	98,328	99,206	100,688	98,396	100,272	97,848	99,206	95,070	94,480
'11 WE	67,902	72,578	76,222	79,264	80,366	83,088	76,702	81,358	87,258	82,124	75,080	72,466
'12 WD	91,808	96,530	99,654	101,172	99,716	102,386	100,406	103,910	100,274	102,284	98,708	92,600
'12 WE	74,406	79,324	80,722	81,398	82,036	78,102	81,100	86,106	86,724	87,338	80,724	73,322

Note: 'Weekday' defined as Monday-Friday, 'Weekend' defined as Saturday-Sunday

Weekday/Weekend Monthly Average Daily Traffic ('08-'12)



	Dec-08	Dec-09	Dec-10	Dec-11	Dec-12
Weekday	73,054	76,098	86,482	94,480	92,600
Weekend	56,834	65,614	58,100	72,466	73,322