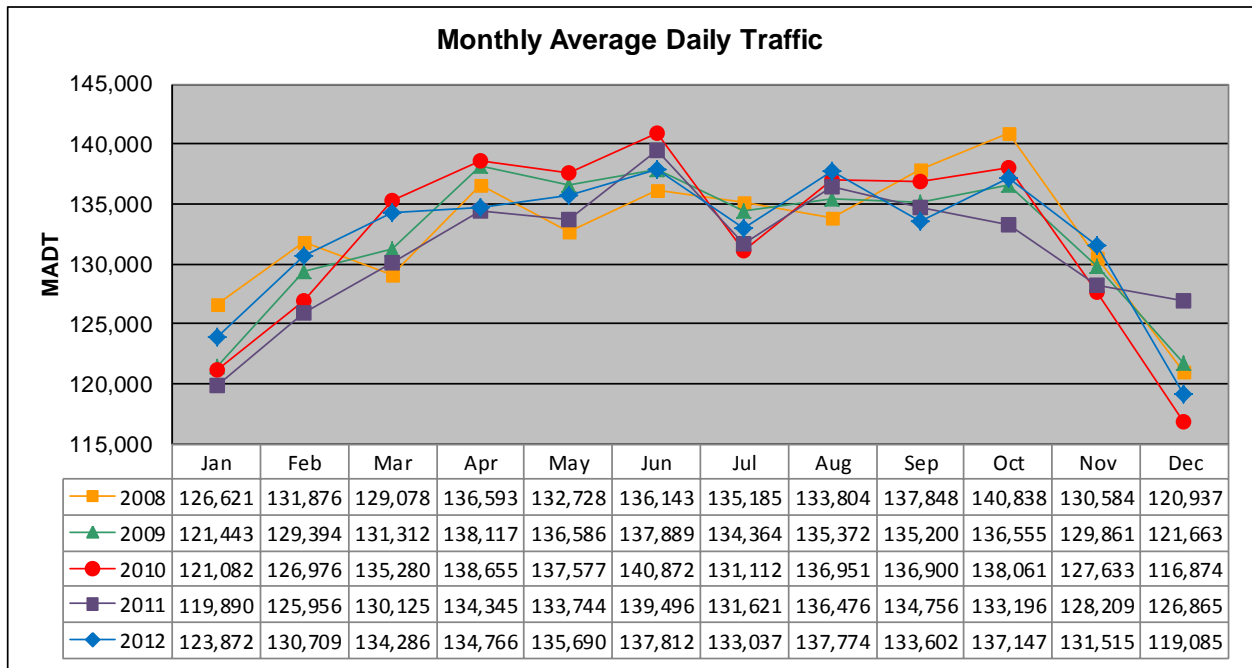


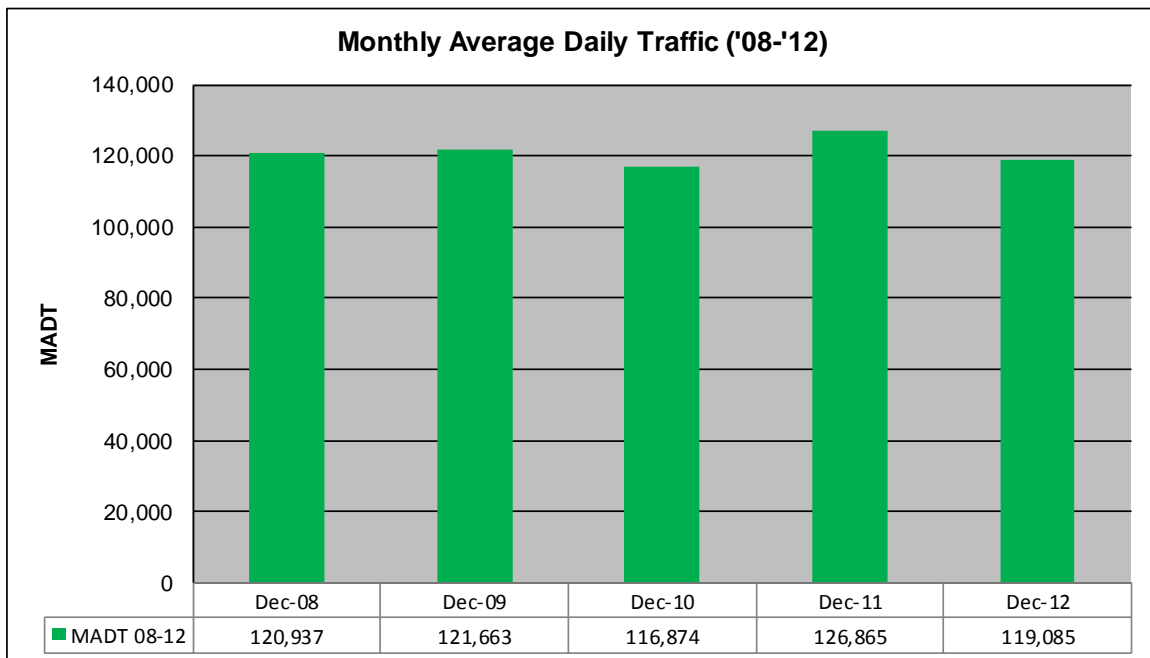
MONTHLY REPORT, STATION NO. 326 (ATR)

DECEMBER 2011

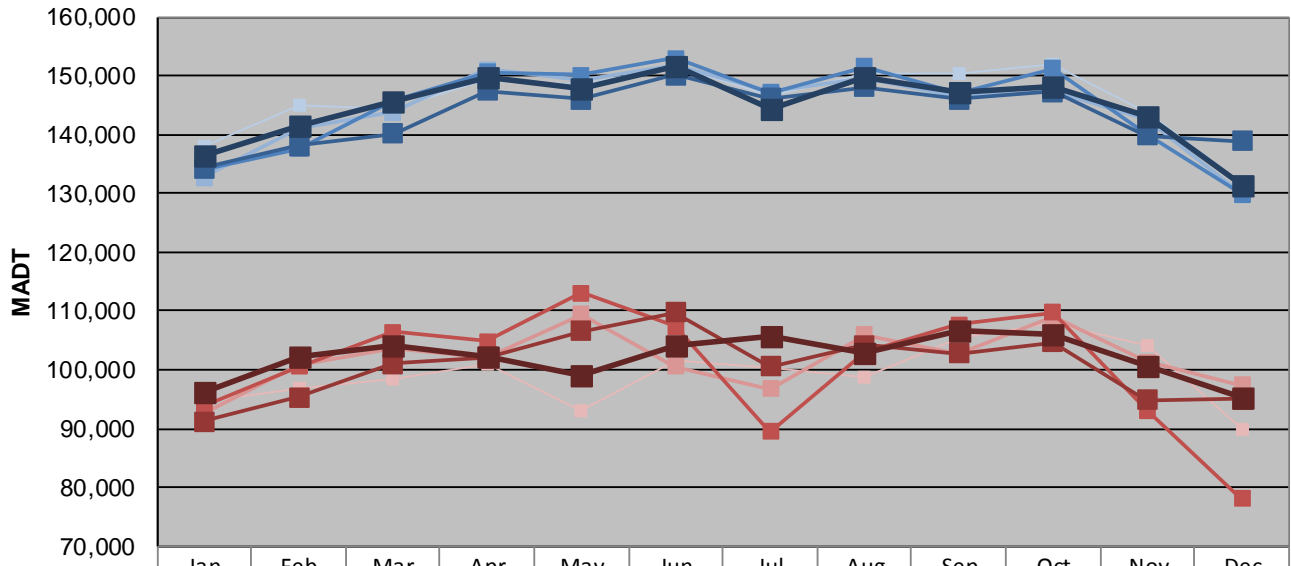
Station Measurement: VOLUME		
Route: I-394	Route Direction: E/W	Lanes: 6
County: Hennepin		Closest City: Minneapolis
Functional Class: Urban Principal Arterial - Interstate		
Location: E OF TH100 IN MINNEAPOLIS		
Ref Post: 007+00.250	True Mile: 7.25	Sequence No. 9850
Volume: 3,691,637		MADT: 119,085
Weekday (M-F) MADT: 131,224		Weekend (Sa-Su) MADT: 95,148



Note: Decrease in traffic June/July 2007 due to construction on I-394



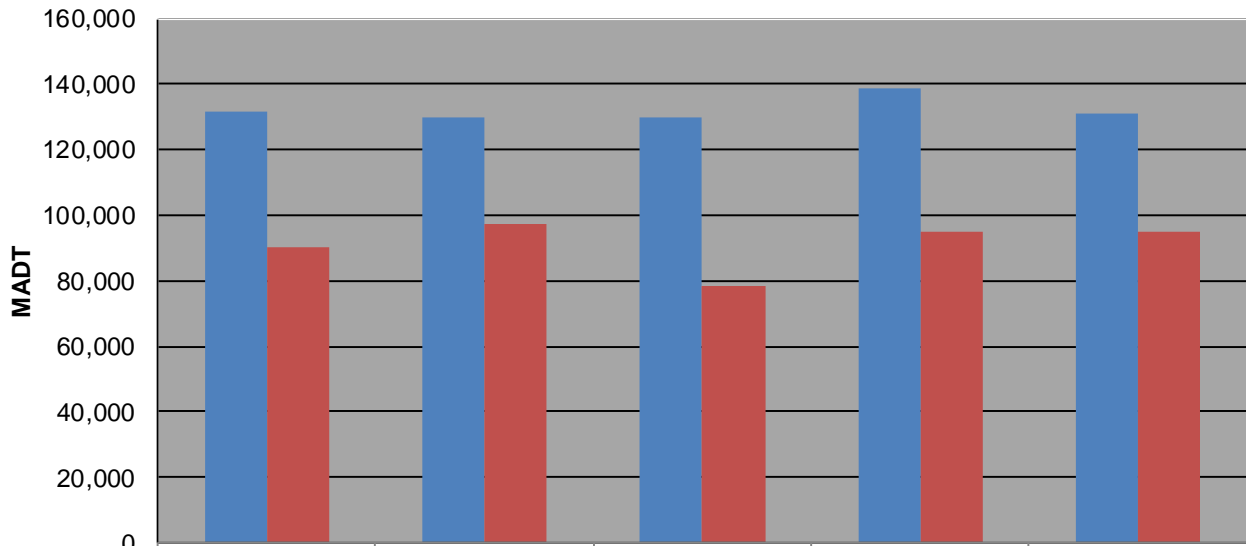
Weekday (WD)/Weekend (WE) Monthly Average Daily Traffic



	Jan	Feb	Mar	Apr	May	Jun	Jul	Aug	Sep	Oct	Nov	Dec
'08 WD	137,928	144,874	144,200	149,312	148,334	151,774	146,510	150,422	150,388	151,844	143,740	131,788
'08 WE	94,554	96,952	98,436	101,044	92,906	101,550	100,308	98,774	105,502	107,998	104,274	90,018
'09 WD	132,756	140,882	143,756	151,044	149,266	151,902	147,308	149,668	146,534	147,210	142,658	129,836
'09 WE	92,674	100,674	103,664	102,182	109,384	100,496	96,714	105,986	102,858	109,054	101,400	97,474
'10 WD	134,204	137,542	145,678	150,662	150,088	152,940	147,150	151,596	147,090	151,236	140,068	129,848
'10 WE	93,936	100,560	106,398	104,806	113,084	107,424	89,432	103,036	107,696	109,828	93,158	78,122
'11 WD	134,220	138,160	140,194	147,468	145,970	150,066	146,210	148,022	145,974	147,206	139,768	138,944
'11 WE	91,298	95,422	101,116	102,128	106,656	109,794	100,622	104,160	102,790	104,690	94,884	94,962
'12 WD	136,510	141,636	145,738	149,638	147,806	151,642	144,296	149,698	147,118	148,236	142,940	131,224
'12 WE	96,174	102,286	104,094	102,188	99,112	104,150	105,762	102,736	106,570	106,136	100,654	95,148

Note: 'Weekday' defined as Monday-Friday, 'Weekend' defined as Saturday-Sunday

Weekday/Weekend Monthly Average Daily Traffic ('08-'12)



	Dec-08	Dec-09	Dec-10	Dec-11	Dec-12
Weekday	131,788	129,836	129,848	138,944	131,224
Weekend	90,018	97,474	78,122	94,962	95,148