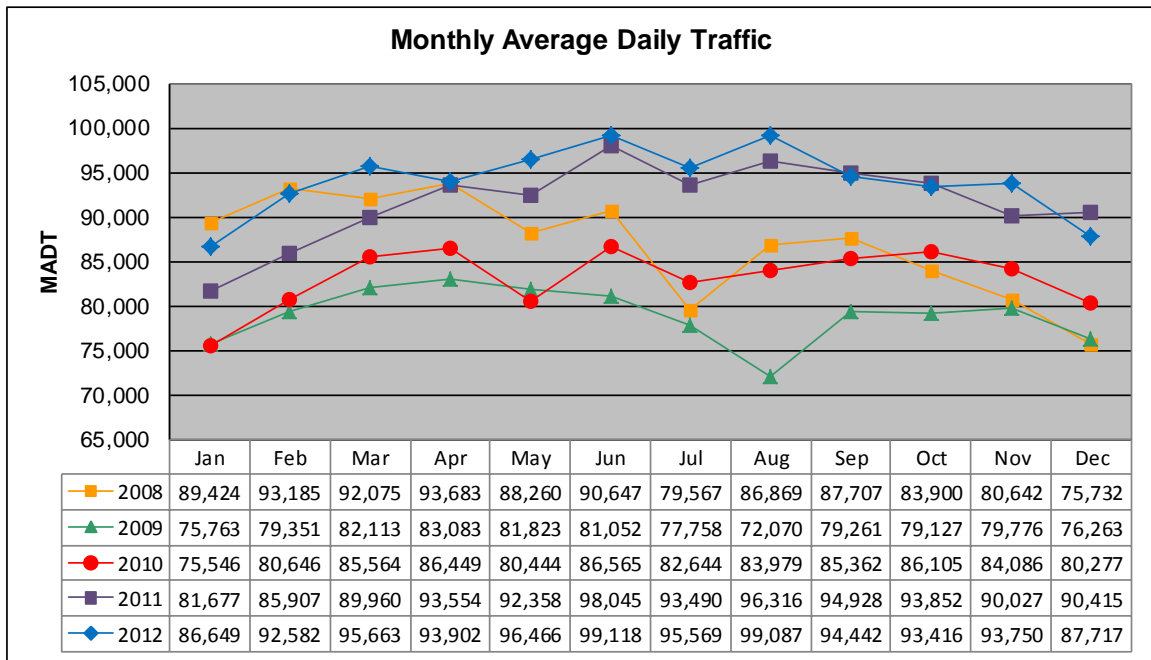


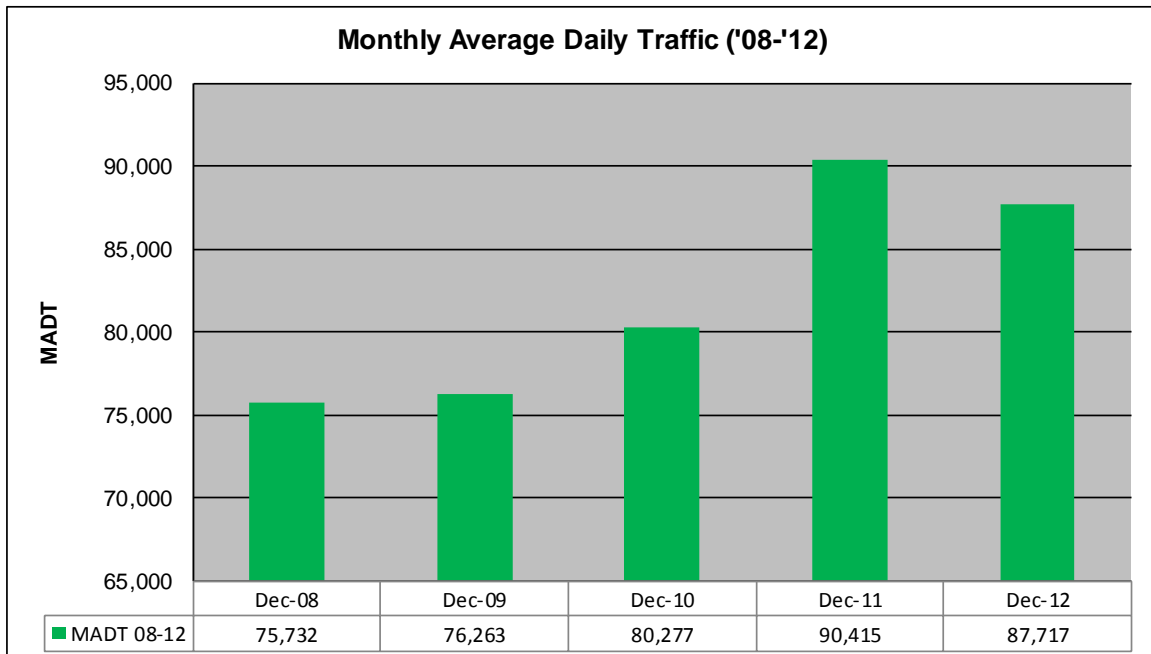
MONTHLY REPORT, STATION NO. 309 (ATR)

DECEMBER 2012

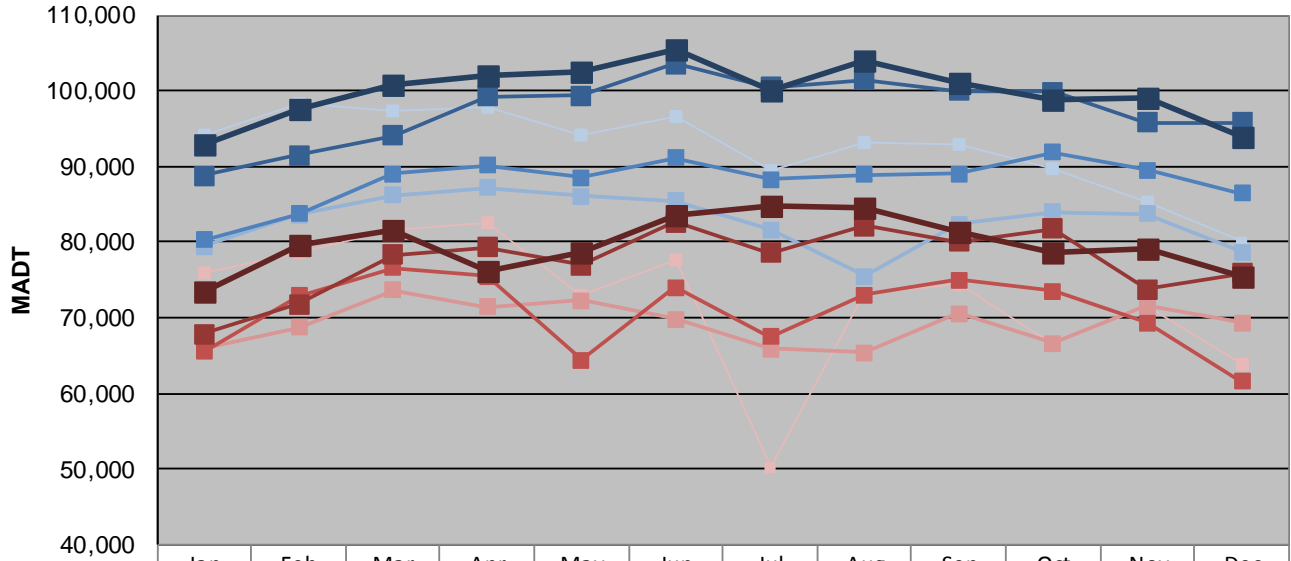
Station Measurement: VOLUME		
Route: TH 65	Route Direction: N/S	Lanes: 6
County: Hennepin		Closest City: Minneapolis
Functional Class: Urban Minor Arterial		
Location: S OF CSAH 5 (E FRANKLIN AVE) IN MINNEAPOLIS		
Ref Post: 000+00.480	True Mile: 0.48	Sequence No. 9838
Volume: 2,719,228		MADT: 87,717
Weekday (M-F) MADT: 93,974		Weekend (Sa-Su) MADT: 75,418



Note: Decrease in traffic 2008-2009 due to I-35W bridge collapse and construction on TH 62... Although traffic increased from 2009 to 2010, volumes were lower than expected due to construction on I-35W and TH 62



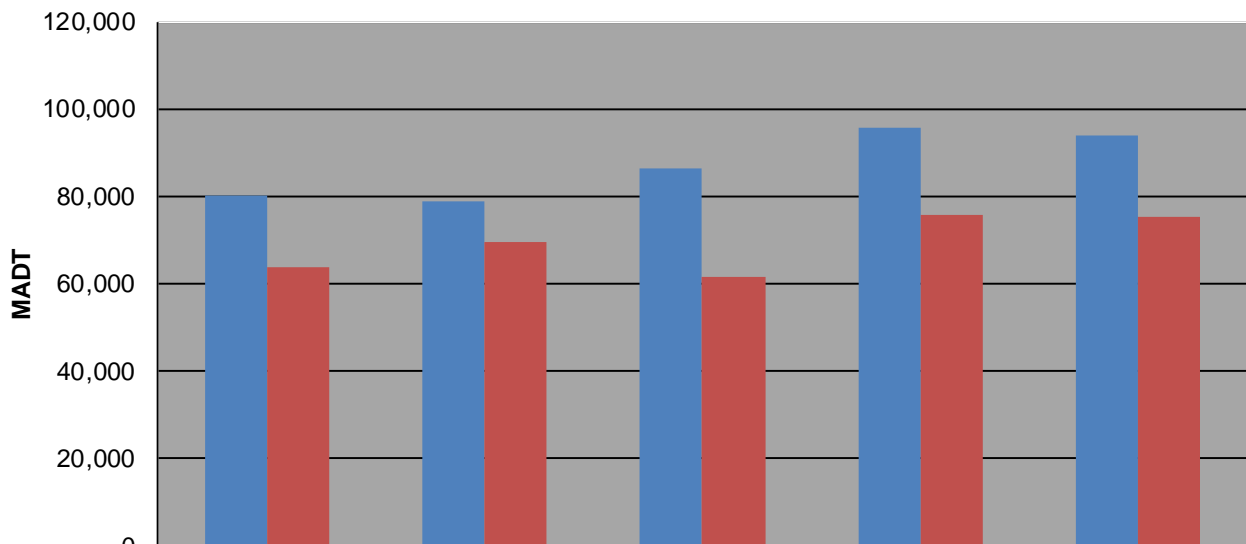
Weekday (WD)/Weekend (WE) Monthly Average Daily Traffic



	Jan	Feb	Mar	Apr	May	Jun	Jul	Aug	Sep	Oct	Nov	Dec
'08 WD	94,200	98,442	97,426	97,708	94,042	96,600	89,430	93,254	92,888	89,642	85,186	79,996
'08 WE	75,852	78,592	81,484	82,492	72,906	77,680	50,226	73,234	74,512	66,652	71,554	63,858
'09 WD	79,420	83,626	86,228	87,228	86,088	85,440	81,630	75,536	82,372	83,980	83,704	78,646
'09 WE	65,954	68,666	73,630	71,472	72,318	69,802	65,898	65,344	70,520	66,558	71,590	69,296
'10 WD	80,314	83,736	88,986	90,184	88,512	91,110	88,276	88,858	88,964	91,878	89,498	86,498
'10 WE	65,512	72,922	76,566	75,508	64,334	74,030	67,466	73,024	75,024	73,546	69,320	61,546
'11 WD	88,724	91,542	94,104	99,192	99,328	103,524	100,430	101,516	99,974	99,858	95,792	95,786
'11 WE	67,784	71,794	78,362	79,268	76,928	82,578	78,590	82,114	80,026	81,762	73,722	75,806
'12 WD	92,882	97,624	100,822	102,040	102,392	105,360	100,084	103,934	101,050	98,834	99,032	93,974
'12 WE	73,406	79,596	81,592	76,054	78,704	83,610	84,858	84,582	81,230	78,700	78,996	75,418

Note: 'Weekday' defined as Monday-Friday, 'Weekend' defined as Saturday-Sunday

Weekday/Weekend Monthly Average Daily Traffic ('08-'12)



	Dec-08	Dec-09	Dec-10	Dec-11	Dec-12
Weekday	79,996	78,646	86,498	95,786	93,974
Weekend	63,858	69,296	61,546	75,806	75,418