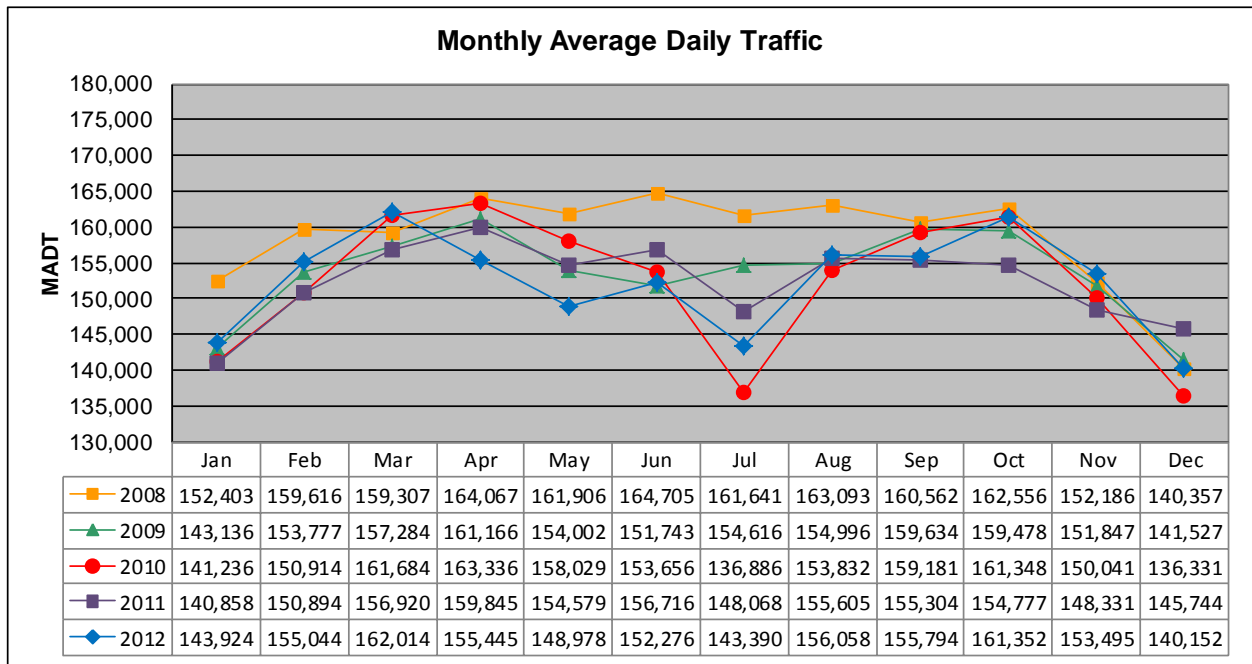


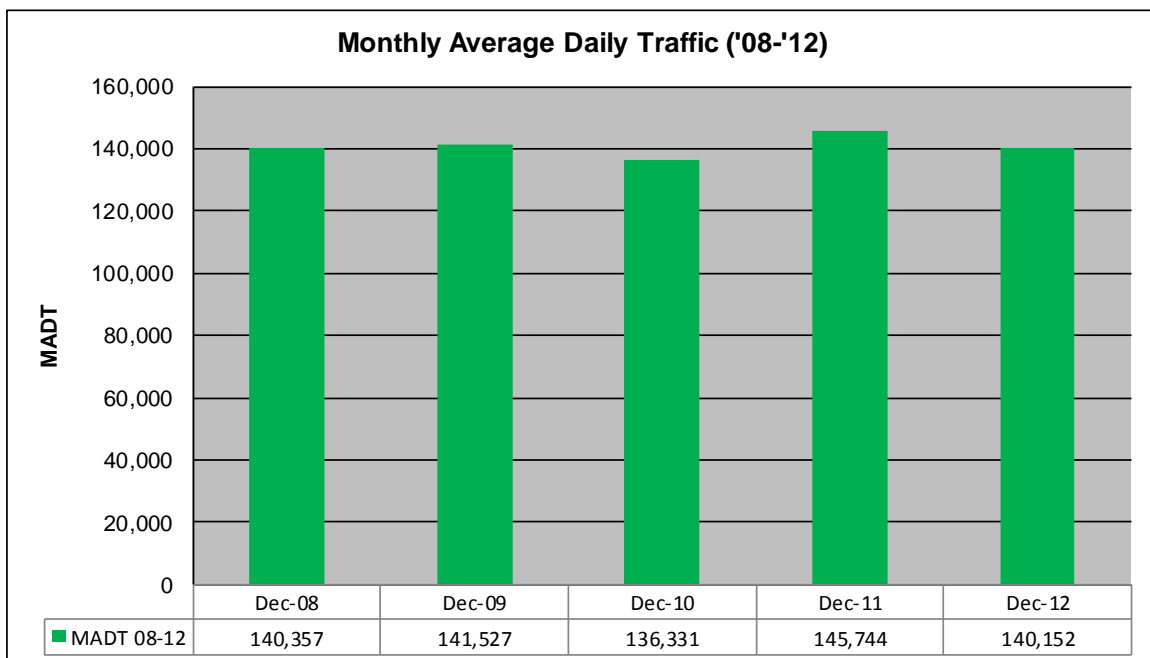
MONTHLY REPORT, STATION NO. 301 (ATR)

DECEMBER 2012

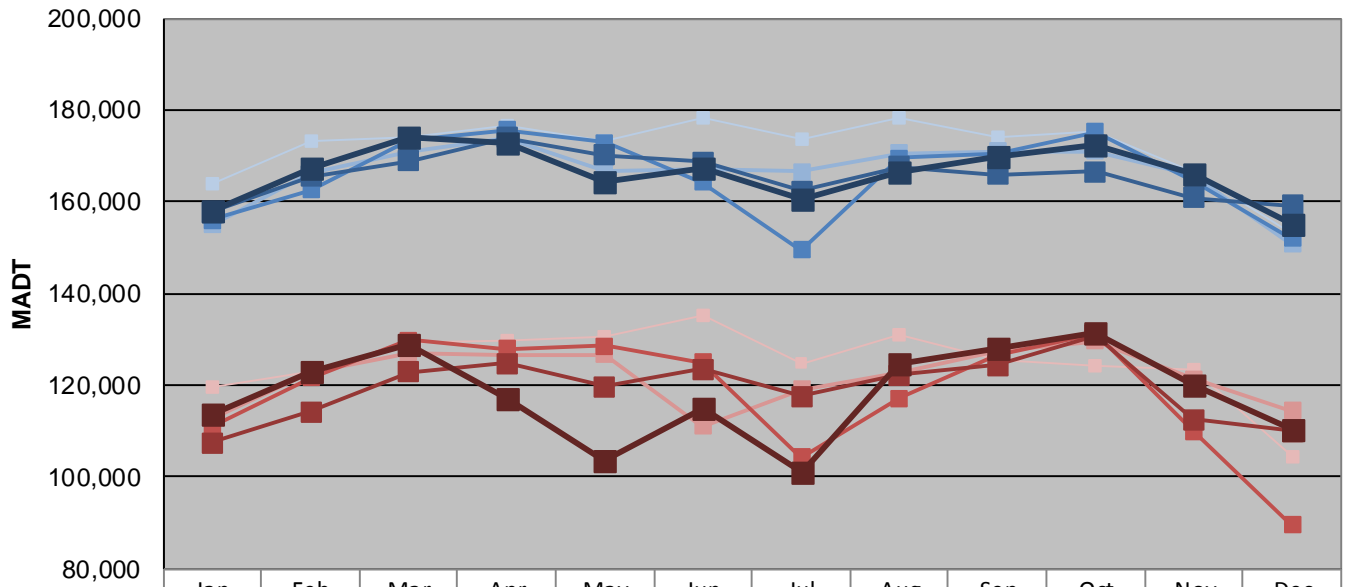
Station Measurement: VOLUME		
Route: I-94	Route Direction: E/W	Lanes: 8
County: Ramsey		Closest City: St Paul
Functional Class: Urban Principal Arterial - Interstate		
Location: W OF N VICTORIA ST IN ST PAUL		
Ref Post: 239+00.922	True Mile: 240.541	Sequence No. 9834
Volume: 4,344,708		MADT: 140,152
Weekday (M-F) MADT: 155,236		Weekend (Sa-Su) MADT: 110,130



Note: Decrease in traffic July 2010 due to construction on I-94



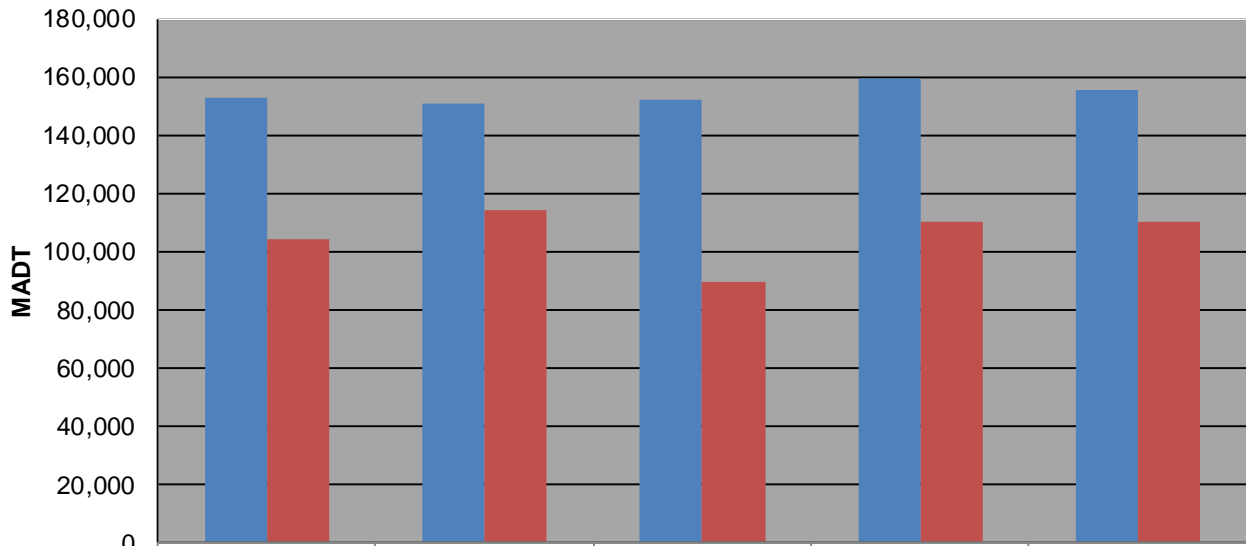
Weekday (WD)/Weekend (WE) Monthly Average Daily Traffic



	Jan	Feb	Mar	Apr	May	Jun	Jul	Aug	Sep	Oct	Nov	Dec
'08 WD	164,022	173,046	174,162	176,554	173,402	178,174	173,848	178,118	174,010	175,234	166,502	152,944
'08 WE	119,424	123,108	129,470	129,572	130,784	135,182	124,796	130,842	125,606	124,394	123,556	104,488
'09 WD	154,912	166,262	170,934	173,746	166,524	167,006	166,644	170,662	171,070	170,932	165,672	150,774
'09 WE	112,660	122,564	127,166	126,390	126,724	111,016	119,152	122,730	127,550	129,702	121,376	114,360
'10 WD	155,916	162,606	173,254	175,752	172,872	164,170	149,528	169,482	170,404	175,122	164,462	152,098
'10 WE	110,760	121,688	129,860	128,006	128,650	125,058	104,262	117,190	126,716	131,408	110,098	89,422
'11 WD	157,616	165,538	168,814	174,020	170,178	168,600	162,306	167,542	165,852	166,568	160,868	159,268
'11 WE	107,412	114,258	122,868	124,716	119,704	123,494	117,560	122,162	124,378	130,978	112,468	110,048
'12 WD	157,896	167,408	174,266	172,766	164,326	167,464	160,522	166,626	169,706	172,290	165,836	155,236
'12 WE	113,634	123,072	128,940	117,092	103,562	115,088	100,940	124,648	127,974	131,424	120,046	110,130

Note: 'Weekday' defined as Monday-Friday, 'Weekend' defined as Saturday-Sunday

Weekday/Weekend Monthly Average Daily Traffic ('08-'12)



	Dec-08	Dec-09	Dec-10	Dec-11	Dec-12
Weekday	152,944	150,774	152,098	159,268	155,236
Weekend	104,488	114,360	89,422	110,048	110,130