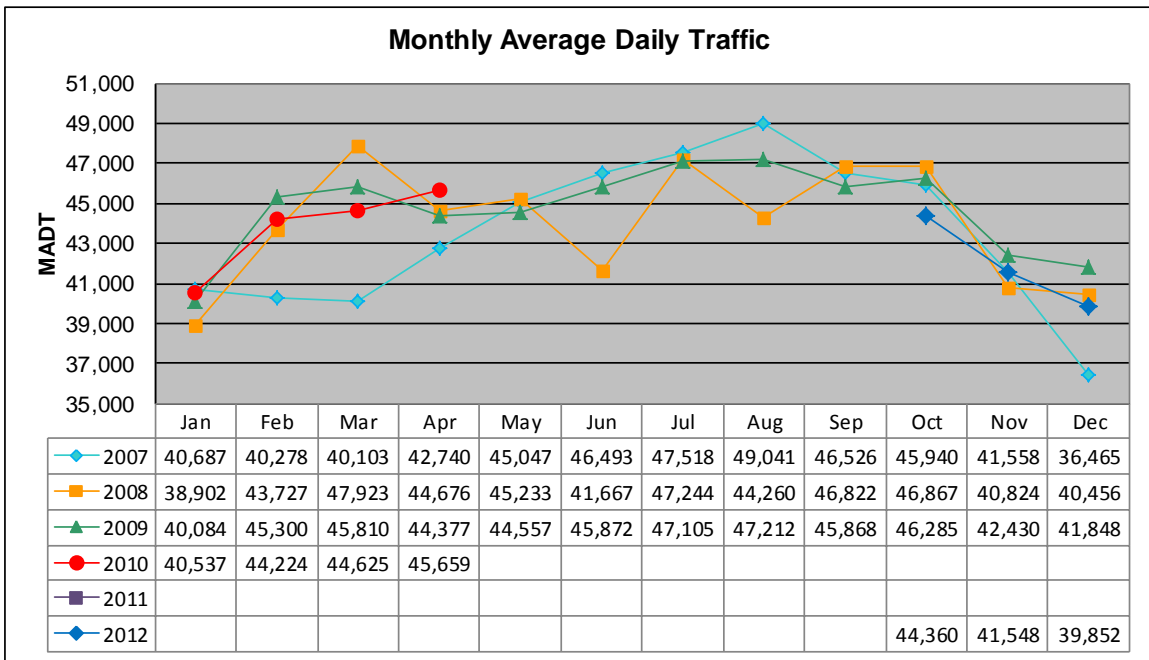


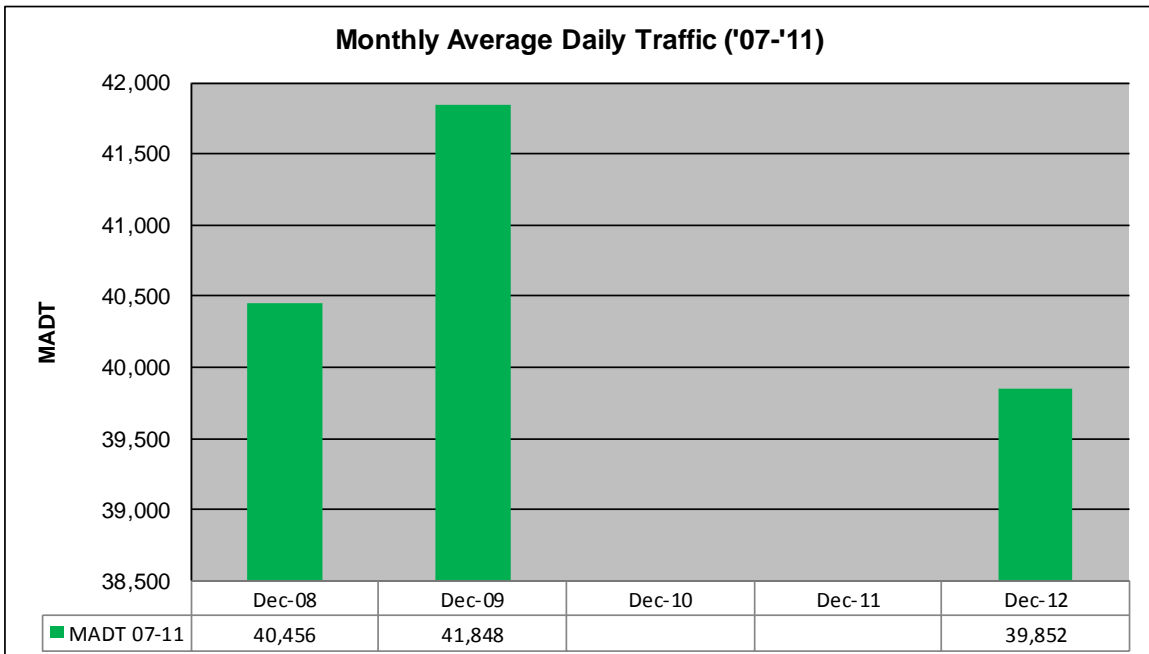
MONTHLY REPORT, STATION NO. 103 (ATR)

DECEMBER 2012

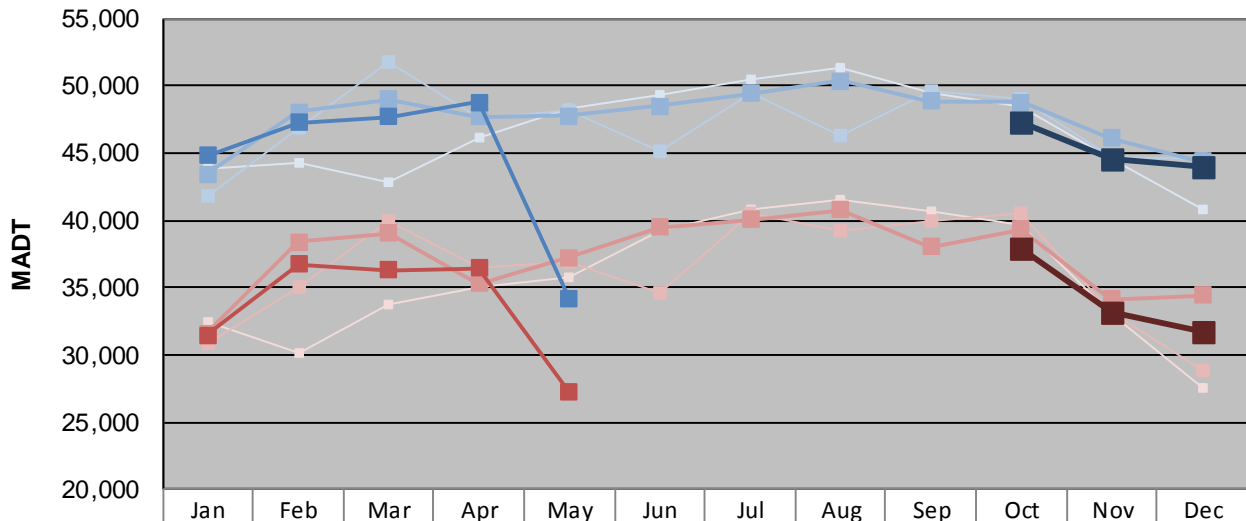
| | | |
|---|----------------------|-------------------------------------|
| Station Measurement: VOLUME/SPEED/CLASS | | |
| Route: I-35 | Route Direction: N/S | Lanes: 4 |
| County: St Louis | Closest City: Duluth | |
| Functional Class: Urban Principal Arterial - Interstate | | |
| Location: E OF MSAS107 (CENTRAL AVE) IN DULUTH | | |
| Ref Post: 252+00.600 | True Mile: 252.622 | Sequence No. 9825 |
| Volume: 1,235,401 | | MADT: 39,852 |
| Weekday (M-F) MADT: 43,934 | | Weekend (Sa-Su) MADT: 31,674 |



Note: Decrease in traffic during June and August 2008 due to construction... No data from May 2010 to September 2012 due to sensors destroyed by construction



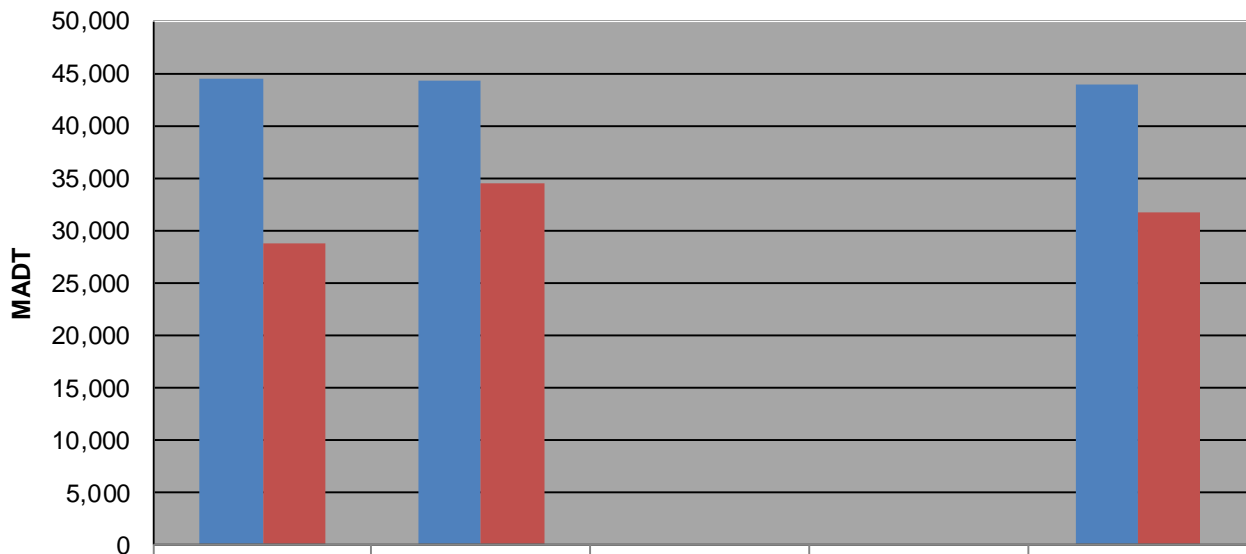
Weekday (WD)/Weekend (WE) Monthly Average Daily Traffic



| | Jan | Feb | Mar | Apr | May | Jun | Jul | Aug | Sep | Oct | Nov | Dec |
|--------|--------|--------|--------|--------|--------|--------|--------|--------|--------|--------|--------|--------|
| '07 WD | 43,808 | 44,312 | 42,864 | 46,116 | 48,328 | 49,328 | 50,420 | 51,396 | 49,444 | 48,456 | 44,568 | 40,824 |
| '07 WE | 32,392 | 30,194 | 33,742 | 35,058 | 35,704 | 39,244 | 40,844 | 41,594 | 40,690 | 39,626 | 33,068 | 27,498 |
| '08 WD | 41,880 | 46,818 | 51,814 | 47,642 | 48,178 | 45,142 | 49,496 | 46,334 | 49,606 | 49,092 | 44,664 | 44,552 |
| '08 WE | 30,896 | 34,994 | 39,940 | 36,496 | 36,906 | 34,658 | 40,546 | 39,184 | 39,984 | 40,460 | 33,144 | 28,814 |
| '09 WD | 43,470 | 48,064 | 48,958 | 47,678 | 47,798 | 48,468 | 49,394 | 50,336 | 48,866 | 48,780 | 46,106 | 44,374 |
| '09 WE | 31,576 | 38,390 | 39,024 | 35,294 | 37,226 | 39,450 | 40,028 | 40,744 | 38,018 | 39,328 | 34,168 | 34,396 |
| '10 WD | 44,794 | 47,236 | 47,690 | 48,788 | 34,164 | | | | | | | |
| '10 WE | 31,468 | 36,696 | 36,306 | 36,452 | 27,184 | | | | | | | |
| '11 WD | | | | | | | | | | | | |
| '11 WE | | | | | | | | | | | | |
| '12 WD | | | | | | | | | | 47,226 | 44,522 | 43,934 |
| '12 WE | | | | | | | | | | 37,924 | 33,176 | 31,674 |

Note: 'Weekday' defined as Monday-Friday, 'Weekend' defined as Saturday-Sunday

Weekday/Weekend Monthly Average Daily Traffic ('07-'11)



| | Dec-08 | Dec-09 | Dec-10 | Dec-11 | Dec-12 |
|---------|--------|--------|--------|--------|--------|
| Weekday | 44,552 | 44,374 | | | 43,934 |
| Weekend | 28,814 | 34,396 | | | 31,674 |