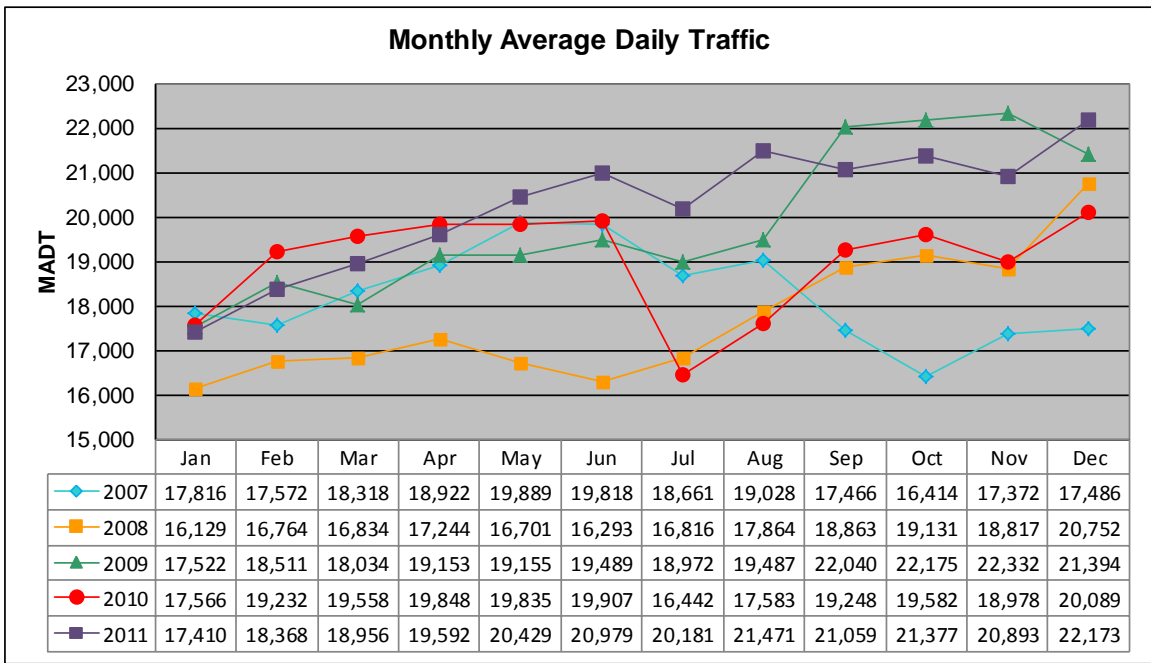


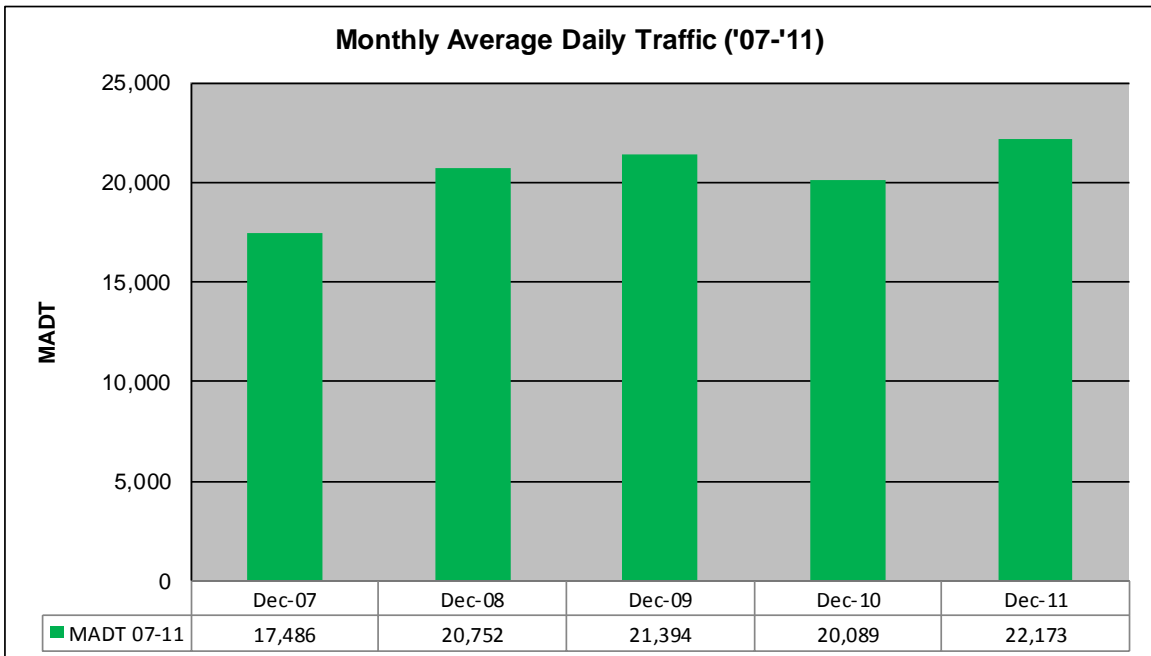
MONTHLY REPORT, STATION NO. 464 (ATR)

DECEMBER 2011

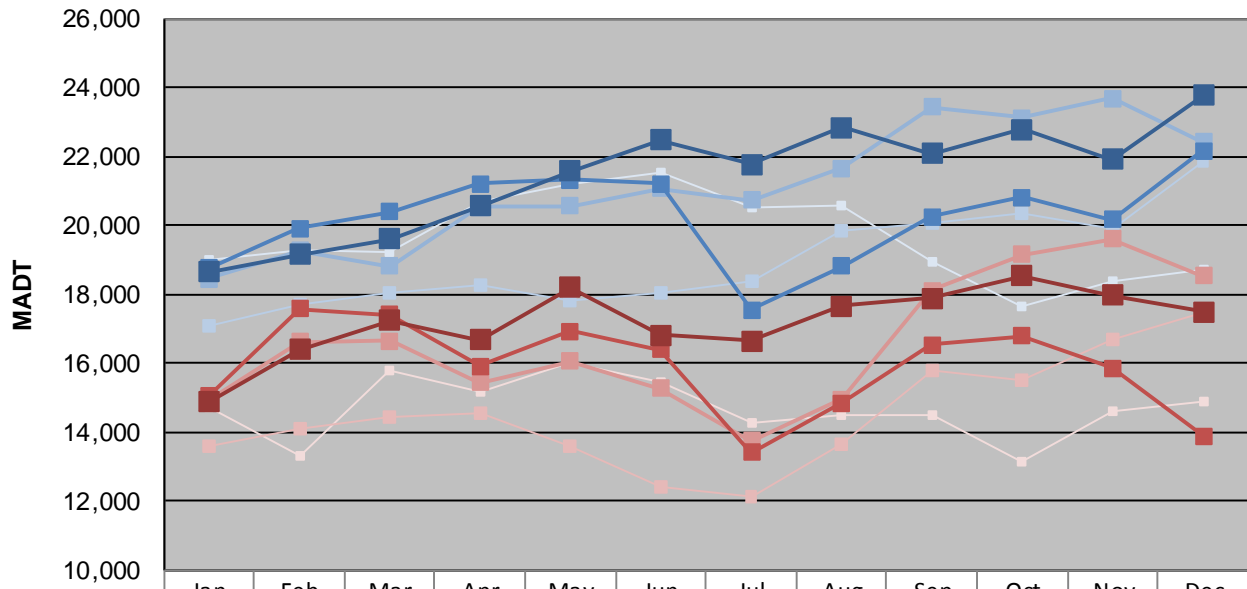
| | | |
|--|----------------------|-------------------------------------|
| Station Measurement: VOLUME | | |
| Route: CSAH 20 | Route Direction: E/W | Lanes: 5 |
| County: Ramsey | | Closest City: Maplewood |
| Functional Class: Urban Minor Arterial | | |
| Location: E OF TH61 IN MAPLEWOOD | | |
| Ref Post: 000+00.870 | True Mile: 8.986 | Sequence No. 9912 |
| Volume: 687,357 | | MADT: 22,173 |
| Weekday (M-F) MADT: 23,780 | | Weekend (Sa-Su) MADT: 17,494 |



Note: Decrease in traffic July to October 2007 and July to November 2010 due to construction on TH 61... Addition of a parallel route kept traffic relatively low through November 2008



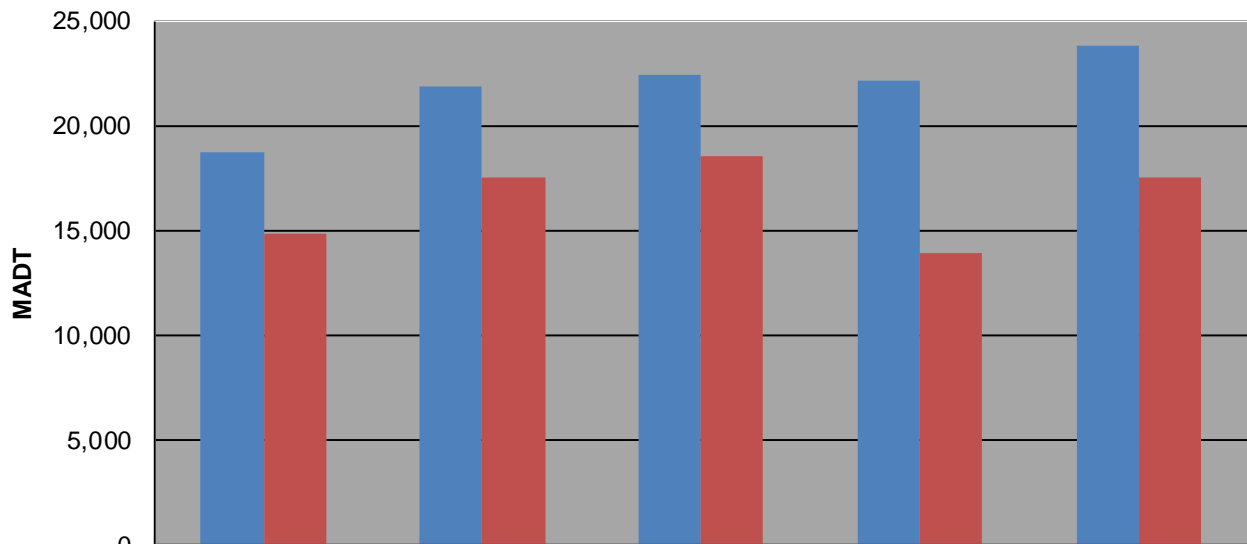
Weekday (WD)/Weekend (WE) Monthly Average Daily Traffic



| | Jan | Feb | Mar | Apr | May | Jun | Jul | Aug | Sep | Oct | Nov | Dec |
|--------|--------|--------|--------|--------|--------|--------|--------|--------|--------|--------|--------|--------|
| '07 WD | 18,996 | 19,280 | 19,240 | 20,682 | 21,192 | 21,554 | 20,526 | 20,580 | 18,966 | 17,630 | 18,372 | 18,732 |
| '07 WE | 14,734 | 13,304 | 15,806 | 15,176 | 16,026 | 15,438 | 14,256 | 14,474 | 14,466 | 13,122 | 14,624 | 14,860 |
| '08 WD | 17,068 | 17,686 | 18,040 | 18,246 | 17,790 | 18,038 | 18,380 | 19,820 | 20,054 | 20,328 | 19,884 | 21,862 |
| '08 WE | 13,616 | 14,090 | 14,424 | 14,536 | 13,618 | 12,404 | 12,128 | 13,676 | 15,806 | 15,488 | 16,686 | 17,488 |
| '09 WD | 18,446 | 19,264 | 18,818 | 20,536 | 20,548 | 21,066 | 20,740 | 21,666 | 23,436 | 23,108 | 23,692 | 22,412 |
| '09 WE | 14,902 | 16,628 | 16,632 | 15,422 | 16,056 | 15,276 | 13,748 | 14,950 | 18,116 | 19,142 | 19,604 | 18,520 |
| '10 WD | 18,750 | 19,900 | 20,386 | 21,192 | 21,330 | 21,204 | 17,542 | 18,824 | 20,236 | 20,808 | 20,154 | 22,160 |
| '10 WE | 15,034 | 17,566 | 17,394 | 15,912 | 16,926 | 16,396 | 13,416 | 14,850 | 16,522 | 16,782 | 15,850 | 13,886 |
| '11 WD | 18,650 | 19,148 | 19,602 | 20,562 | 21,566 | 22,484 | 21,758 | 22,842 | 22,090 | 22,786 | 21,906 | 23,780 |
| '11 WE | 14,884 | 16,392 | 17,250 | 16,668 | 18,194 | 16,806 | 16,648 | 17,652 | 17,890 | 18,526 | 17,976 | 17,494 |

Note: 'Weekday' defined as Monday-Friday, 'Weekend' defined as Saturday-Sunday

Weekday/Weekend Monthly Average Daily Traffic ('07-'11)



| | Dec-07 | Dec-08 | Dec-09 | Dec-10 | Dec-11 |
|---------|--------|--------|--------|--------|--------|
| Weekday | 18,732 | 21,862 | 22,412 | 22,160 | 23,780 |
| Weekend | 14,860 | 17,488 | 18,520 | 13,886 | 17,494 |