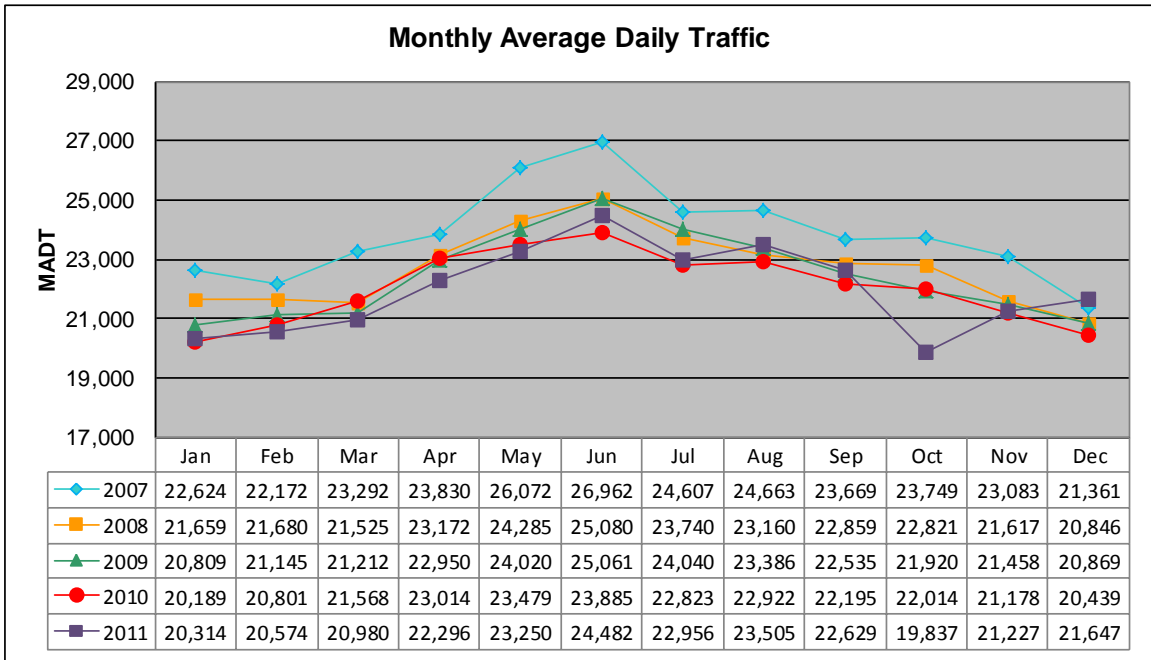


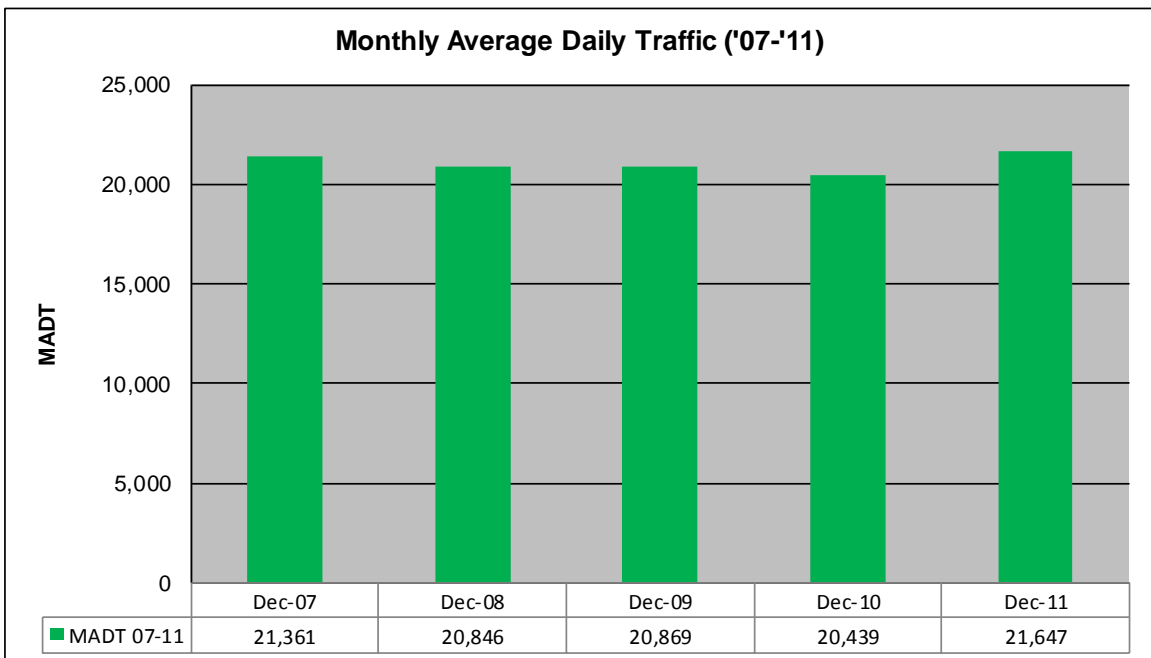
MONTHLY REPORT, STATION NO. 425 (ATR)

DECEMBER 2011

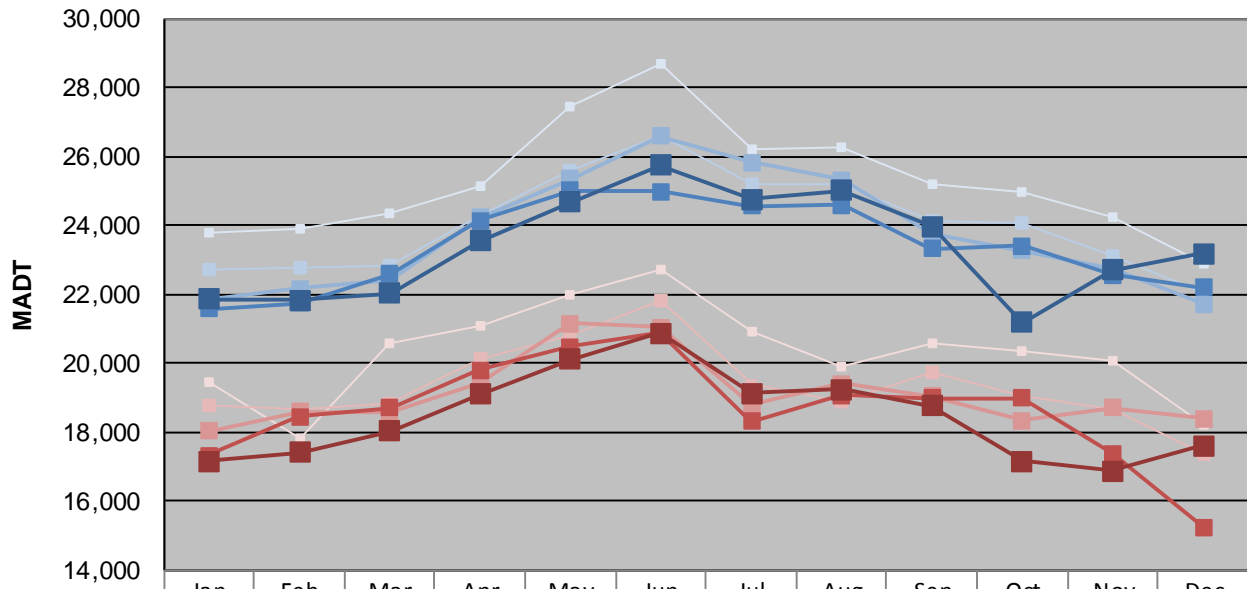
| | | |
|--|----------------------|-------------------------------------|
| Station Measurement: VOLUME | | |
| Route: CSAH 32 | Route Direction: E/W | Lanes: 4 |
| County: Dakota | | Closest City: Eagan |
| Functional Class: Urban Minor Arterial | | |
| Location: W OF MSAS109 (JOHNNY CAKE RIDGE RD) IN EAGAN | | |
| Ref Post: 004+00.840 | True Mile: 4.84 | Sequence No. 9896 |
| Volume: 671,053 | | MADT: 21,647 |
| Weekday (M-F) MADT: 23,170 | | Weekend (Sa-Su) MADT: 17,606 |



Note: Decrease in traffic October 2011 due to construction on I-35E



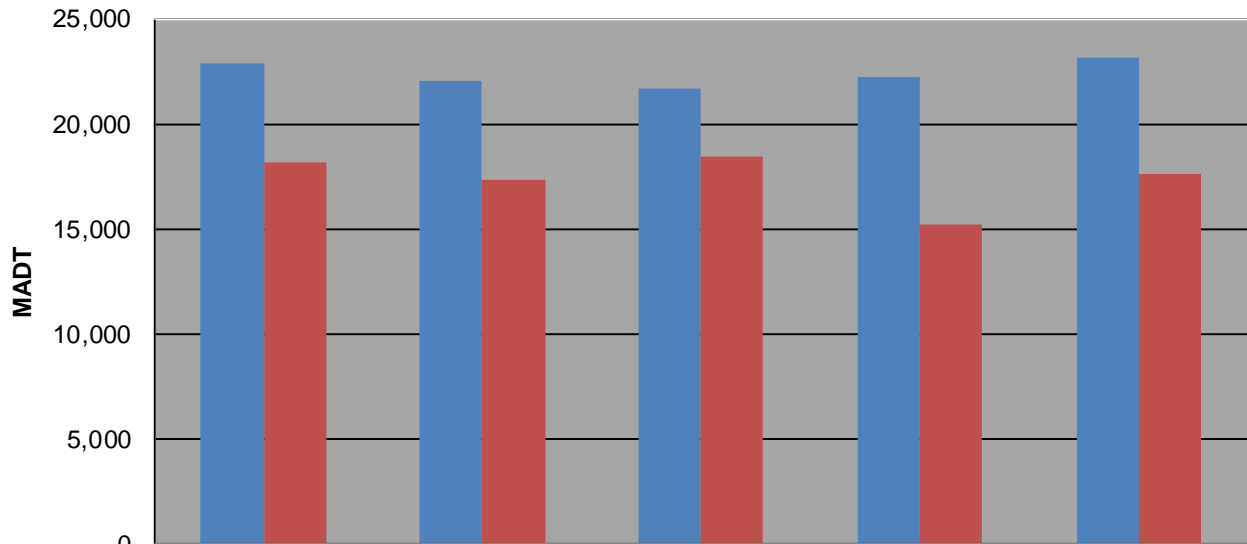
Weekday (WD)/Weekend (WE) Monthly Average Daily Traffic



| | Jan | Feb | Mar | Apr | May | Jun | Jul | Aug | Sep | Oct | Nov | Dec |
|--------|--------|--------|--------|--------|--------|--------|--------|--------|--------|--------|--------|--------|
| '07 WD | 23,800 | 23,912 | 24,354 | 25,160 | 27,424 | 28,698 | 26,180 | 26,266 | 25,208 | 24,966 | 24,224 | 22,888 |
| '07 WE | 19,462 | 17,826 | 20,564 | 21,064 | 21,982 | 22,728 | 20,898 | 19,920 | 20,592 | 20,328 | 20,052 | 18,186 |
| '08 WD | 22,712 | 22,768 | 22,846 | 24,270 | 25,576 | 26,586 | 25,164 | 25,198 | 24,096 | 24,068 | 23,092 | 22,038 |
| '08 WE | 18,746 | 18,680 | 18,842 | 20,098 | 20,782 | 21,830 | 19,382 | 18,896 | 19,720 | 19,058 | 18,668 | 17,342 |
| '09 WD | 21,852 | 22,172 | 22,418 | 24,224 | 25,342 | 26,580 | 25,834 | 25,324 | 23,772 | 23,270 | 22,760 | 21,716 |
| '09 WE | 18,026 | 18,580 | 18,600 | 19,444 | 21,140 | 21,052 | 18,800 | 19,396 | 19,046 | 18,344 | 18,706 | 18,400 |
| '10 WD | 21,568 | 21,740 | 22,592 | 24,128 | 25,012 | 24,970 | 24,562 | 24,596 | 23,320 | 23,394 | 22,552 | 22,192 |
| '10 WE | 17,314 | 18,456 | 18,714 | 19,792 | 20,476 | 20,868 | 18,304 | 19,062 | 18,972 | 18,986 | 17,380 | 15,228 |
| '11 WD | 21,862 | 21,834 | 22,018 | 23,532 | 24,684 | 25,740 | 24,764 | 25,018 | 23,956 | 21,180 | 22,712 | 23,170 |
| '11 WE | 17,154 | 17,396 | 18,020 | 19,088 | 20,106 | 20,864 | 19,138 | 19,250 | 18,760 | 17,146 | 16,862 | 17,606 |

Note: 'Weekday' defined as Monday-Friday, 'Weekend' defined as Saturday-Sunday

Weekday/Weekend Monthly Average Daily Traffic ('07-'11)



| | Dec-07 | Dec-08 | Dec-09 | Dec-10 | Dec-11 |
|---------|--------|--------|--------|--------|--------|
| Weekday | 22,888 | 22,038 | 21,716 | 22,192 | 23,170 |
| Weekend | 18,186 | 17,342 | 18,400 | 15,228 | 17,606 |