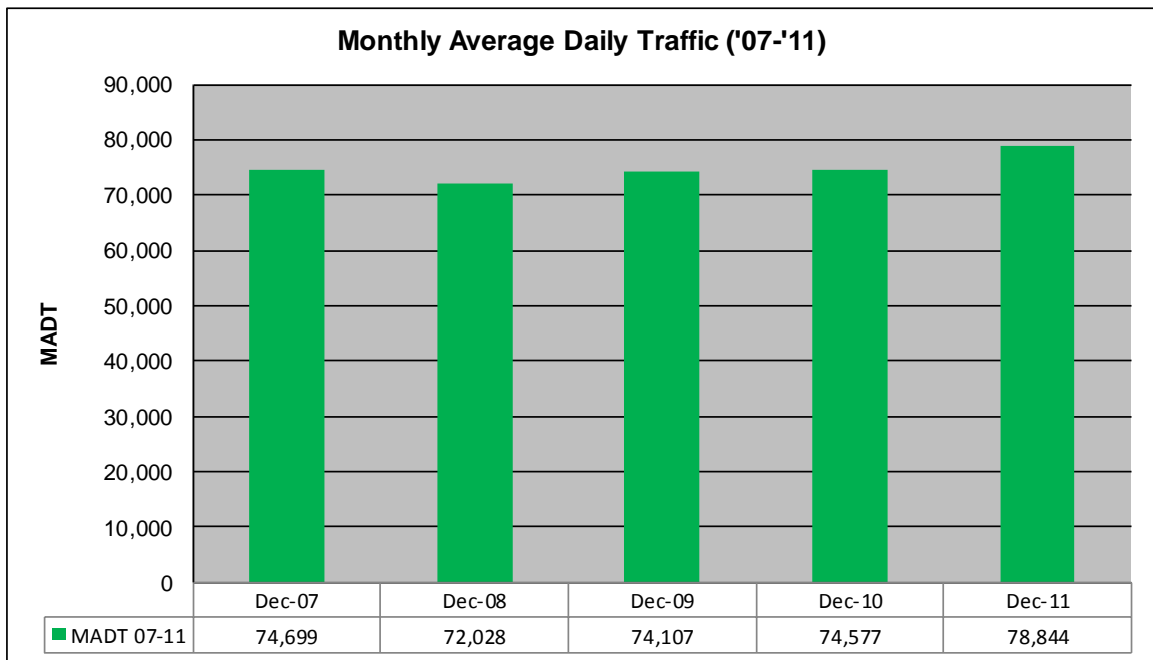
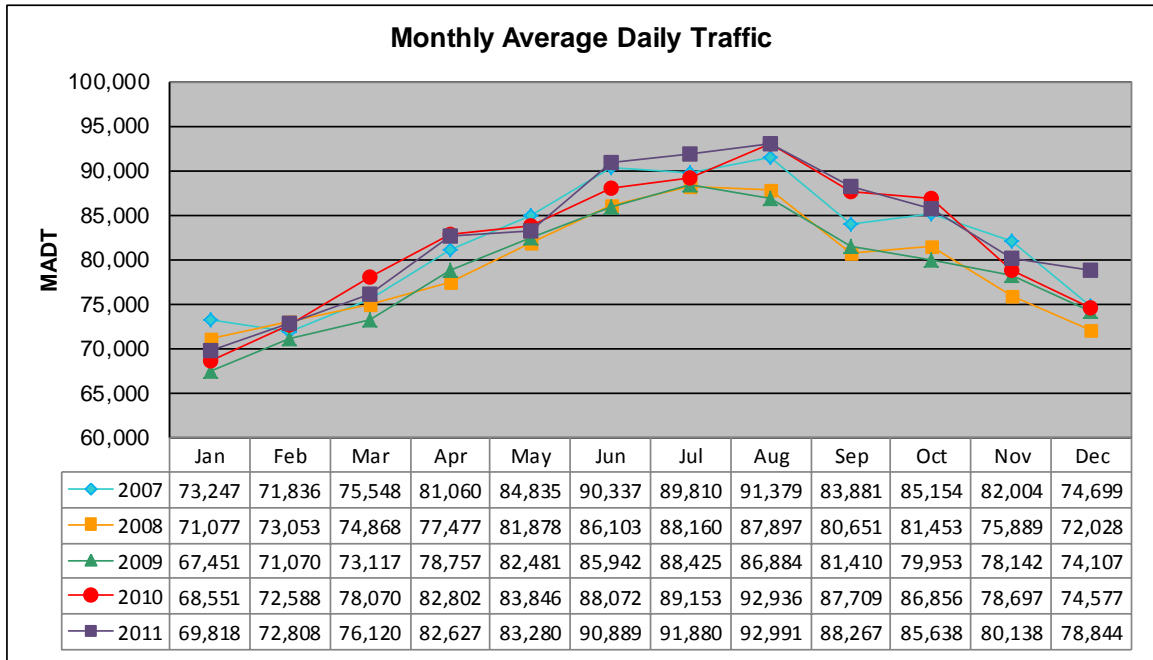


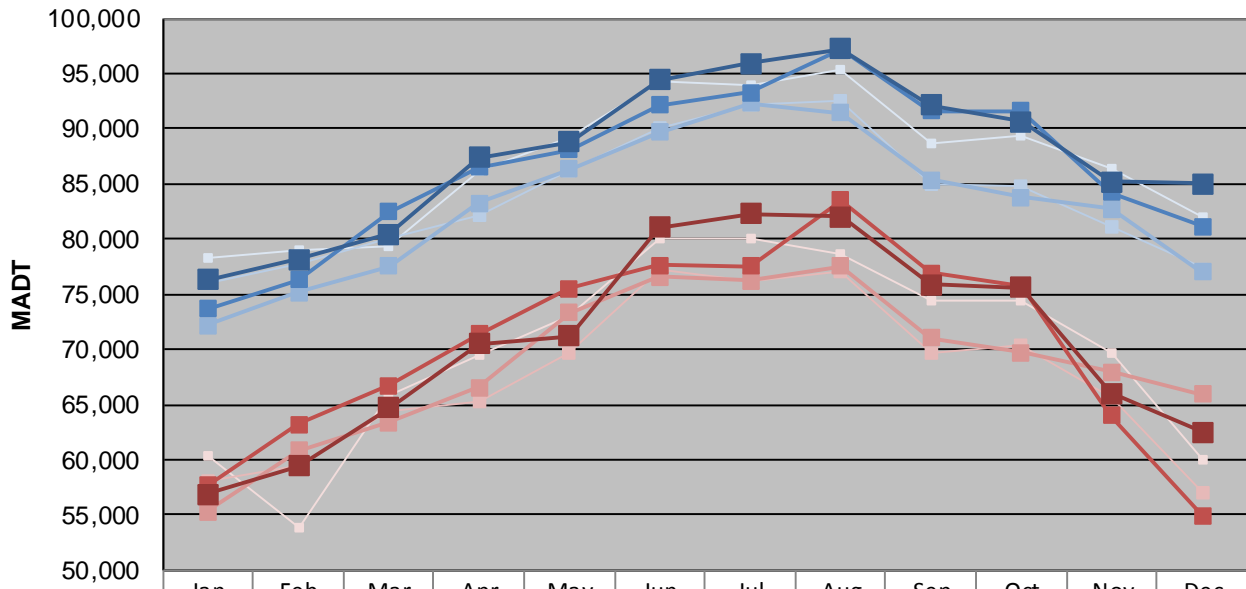
MONTHLY REPORT, STATION NO. 354 (ATR)

DECEMBER 2011

Station Measurement: VOLUME		
Route: I-94	Route Direction: E/W	Lanes: 6
County: Washington		Closest City: Woodbury
Functional Class: Urban Principal Arterial - Interstate		
Location: W OF MSAS127 (COTTAGE GROVE DR) IN WOODBURY		
Ref Post: 252+00.500	True Mile: 253.096	Sequence No. 9861
Volume: 2,444,155		MADT: 78,844
Weekday (M-F) MADT: 85,008		Weekend (Sa-Su) MADT: 62,464



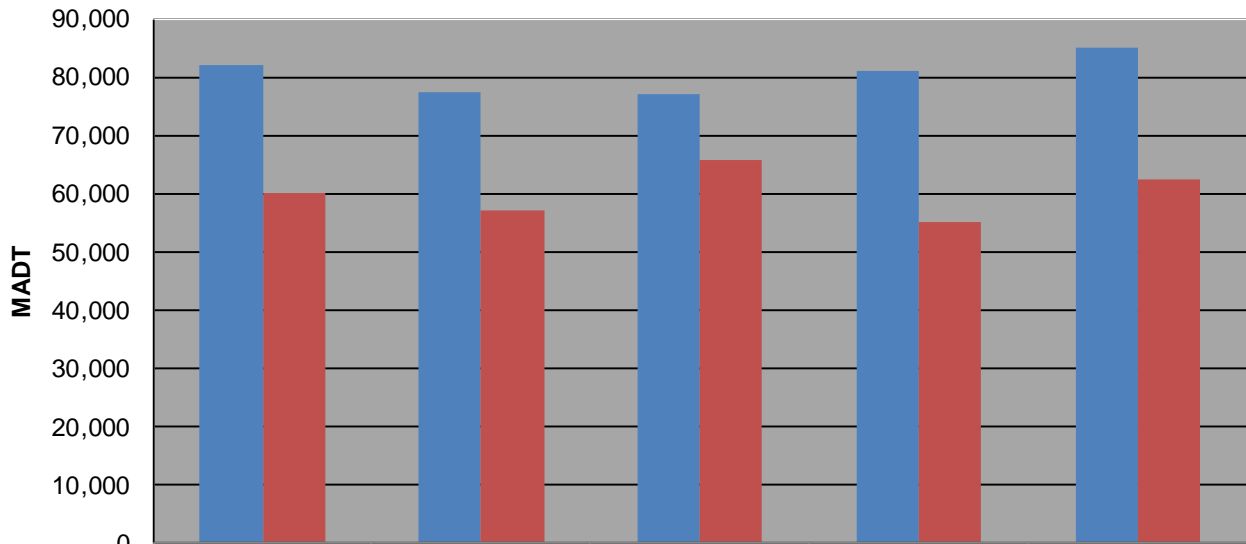
Weekday (WD)/Weekend (WE) Monthly Average Daily Traffic



	Jan	Feb	Mar	Apr	May	Jun	Jul	Aug	Sep	Oct	Nov	Dec
'07 WD	78,226	79,006	79,350	86,126	89,124	94,310	93,900	95,384	88,582	89,426	86,314	81,992
'07 WE	60,268	53,912	65,782	69,548	72,980	79,970	80,068	78,676	74,476	74,414	69,730	59,914
'08 WD	75,922	77,760	80,088	82,106	86,270	90,082	92,238	92,594	85,060	84,870	81,062	77,334
'08 WE	58,018	59,502	64,394	65,304	69,672	77,234	76,238	77,050	69,724	70,402	65,544	57,066
'09 WD	72,186	75,154	77,554	83,288	86,342	89,720	92,278	91,452	85,404	83,748	82,766	77,000
'09 WE	55,292	60,860	63,374	66,566	73,286	76,558	76,222	77,552	71,064	69,716	67,928	65,892
'10 WD	73,630	76,338	82,478	86,492	88,134	92,122	93,266	97,130	91,636	91,594	84,242	81,188
'10 WE	57,646	63,218	66,716	71,382	75,500	77,602	77,566	83,524	76,940	75,690	64,020	54,954
'11 WD	76,276	78,154	80,408	87,378	88,804	94,438	95,910	97,284	92,118	90,670	85,182	85,008
'11 WE	56,844	59,416	64,668	70,464	71,172	81,102	82,308	82,006	75,894	75,608	66,038	62,464

Note: 'Weekday' defined as Monday-Friday, 'Weekend' defined as Saturday-Sunday

Weekday/Weekend Monthly Average Daily Traffic ('07-'11)



	Dec-07	Dec-08	Dec-09	Dec-10	Dec-11
Weekday	81,992	77,334	77,000	81,188	85,008
Weekend	59,914	57,066	65,892	54,954	62,464