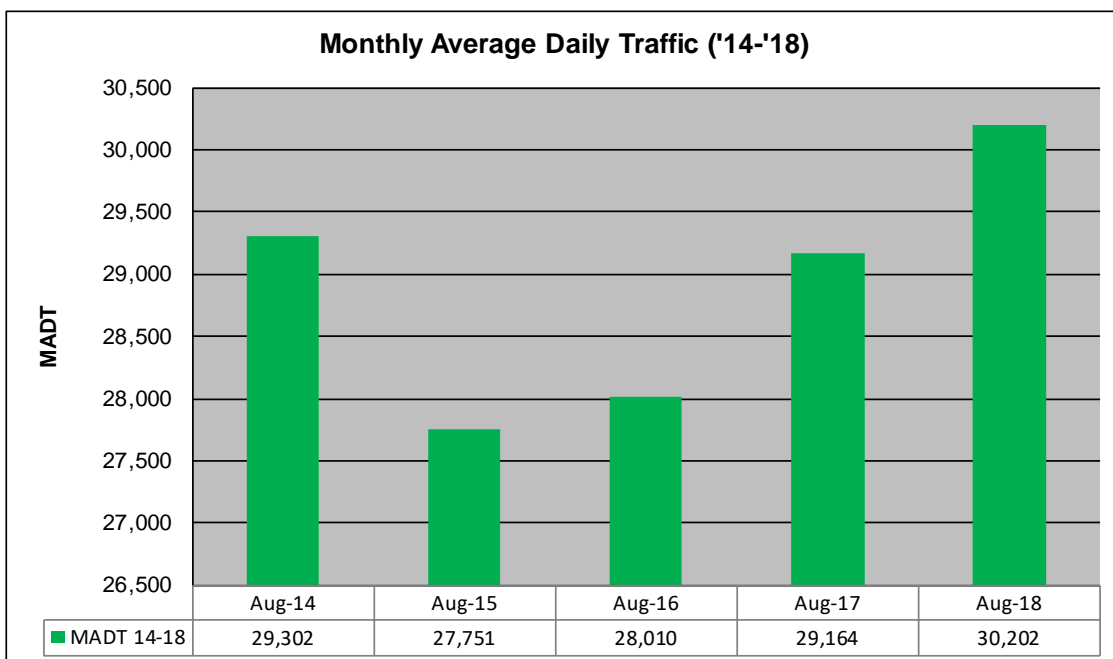
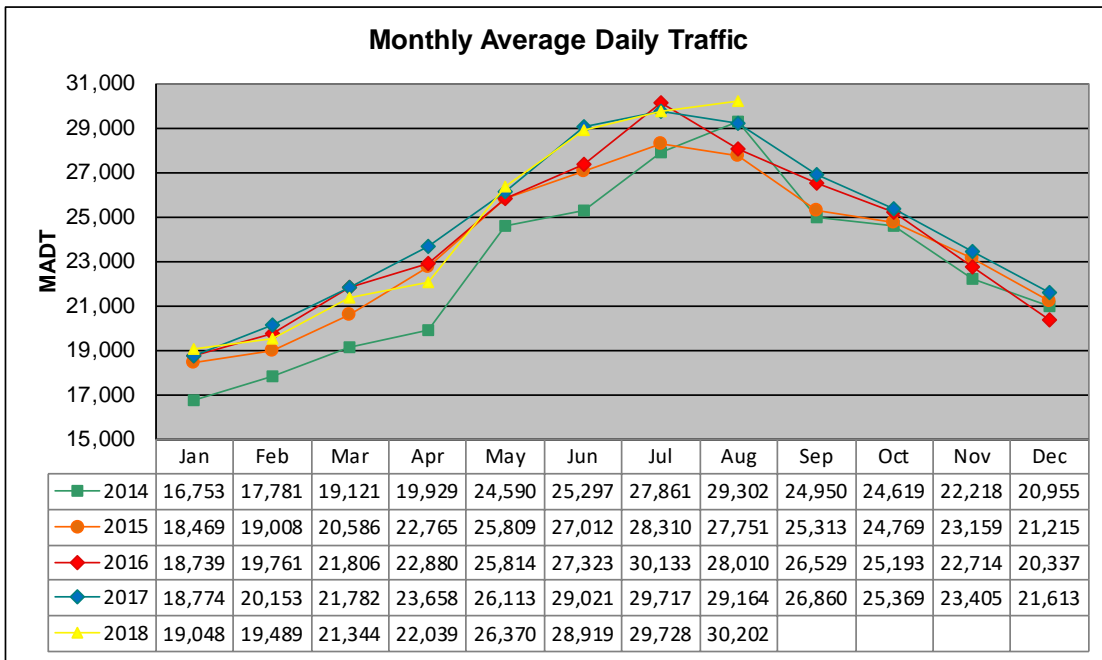


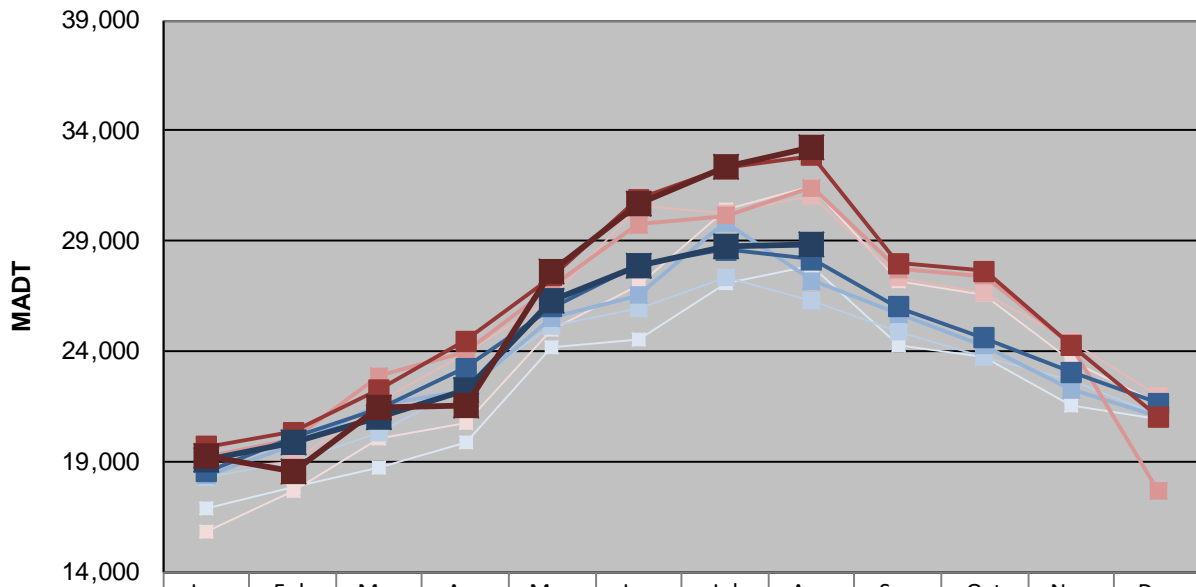
# MONTHLY REPORT, STATION NO. 175 (ATR)

## AUGUST 2018

Station Measurement: VOLUME/SPEED/CLASS		
Route: I-94	Route Direction: E/W	Lanes: 4
County: Stearns		Closest City: Sauk Centre
Functional Class: Rural Principal Arterial - Interstate		
Location: E OF CR186, SE OF SAUK CENTRE		
Ref Post: 128+00.640	True Mile: 129	Sequence No. 6776
<b>Volume: 936,254</b>		<b>MADT: 30,202</b>
<b>Weekday (M-F) MADT: 28,844</b>		<b>Weekend (Sa-Su) MADT: 33,280</b>



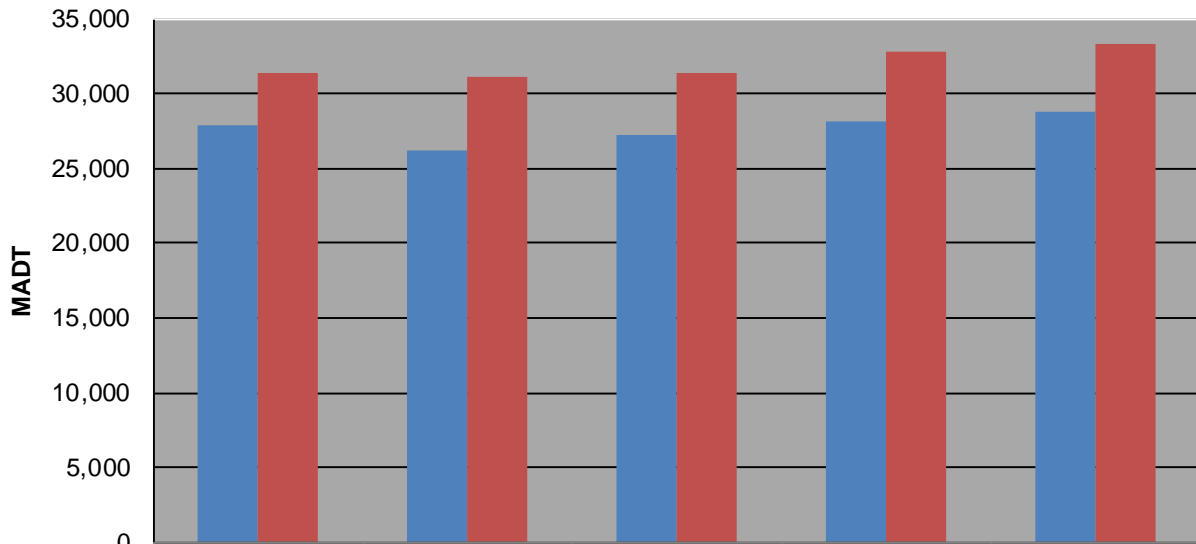
### Weekday (WD)/Weekend (WE) Monthly Average Daily Traffic



	Jan	Feb	Mar	Apr	May	Jun	Jul	Aug	Sep	Oct	Nov	Dec
'14 WD	16,916	17,828	18,768	19,840	24,224	24,522	27,100	27,860	24,264	23,718	21,560	20,904
'14 WE	15,870	17,664	20,030	20,732	24,936	27,016	30,400	31,446	27,208	26,536	23,532	21,608
'15 WD	18,252	19,018	20,290	22,430	25,144	25,952	27,380	26,262	24,926	23,778	22,666	21,070
'15 WE	18,682	18,984	21,726	23,900	26,392	30,604	30,262	31,070	27,370	26,656	24,446	21,972
'16 WD	18,352	19,734	21,632	22,220	25,506	26,518	29,818	27,196	25,692	24,268	22,252	21,102
'16 WE	19,182	19,988	22,906	23,938	26,924	29,736	30,152	31,404	27,738	27,428	24,298	17,706
'17 WD	18,530	20,082	21,418	23,248	26,020	27,938	28,602	28,152	26,020	24,596	23,054	21,664
'17 WE	19,668	20,330	22,258	24,482	27,428	30,908	32,286	32,860	28,002	27,640	24,300	21,030
'18 WD	19,126	19,856	20,978	22,210	26,276	27,884	28,742	28,844				
'18 WE	19,260	18,574	21,500	21,562	27,644	30,722	32,350	33,280				

Note: 'Weekday' defined as Monday-Friday, 'Weekend' defined as Saturday-Sunday

### Weekday/Weekend Monthly Average Daily Traffic ('14-'18)



	Aug-14	Aug-15	Aug-16	Aug-17	Aug-18
Weekday	27,860	26,262	27,196	28,152	28,844
Weekend	31,446	31,070	31,404	32,860	33,280