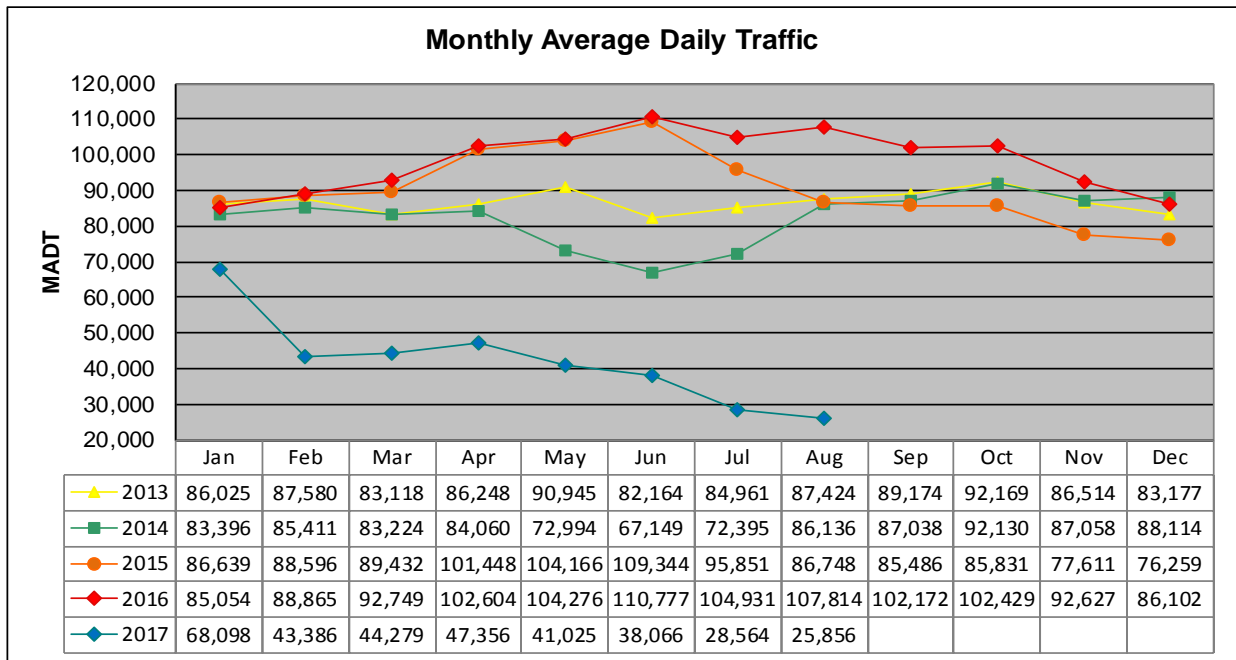


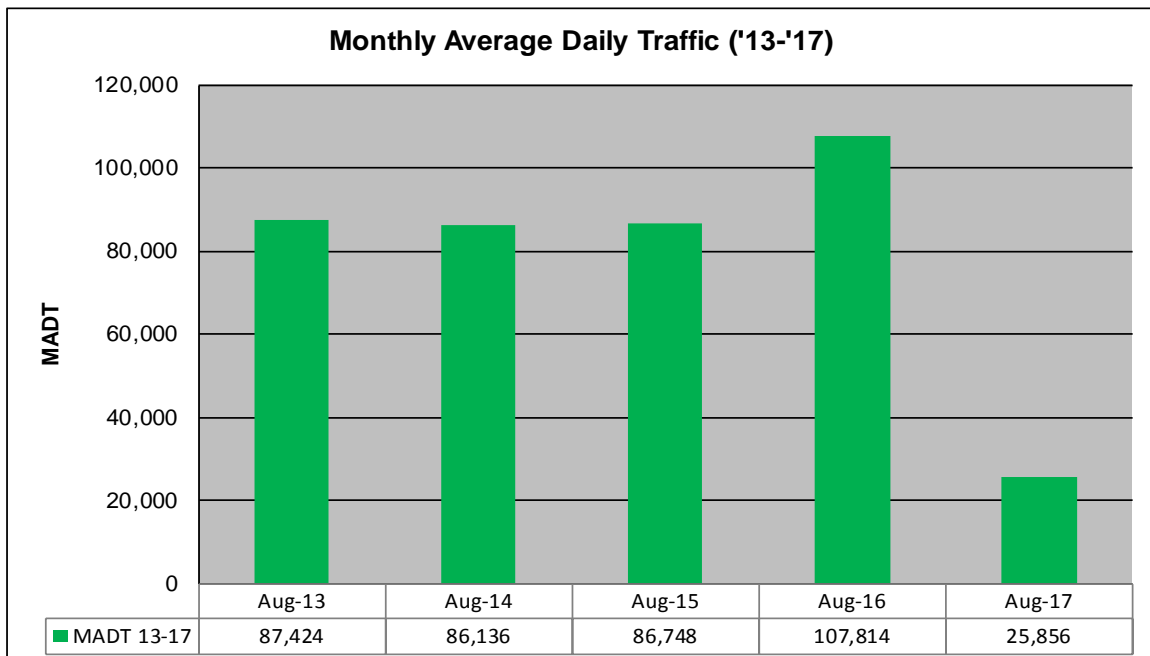
MONTHLY REPORT, STATION NO. 405 (ATR)

AUGUST 2017

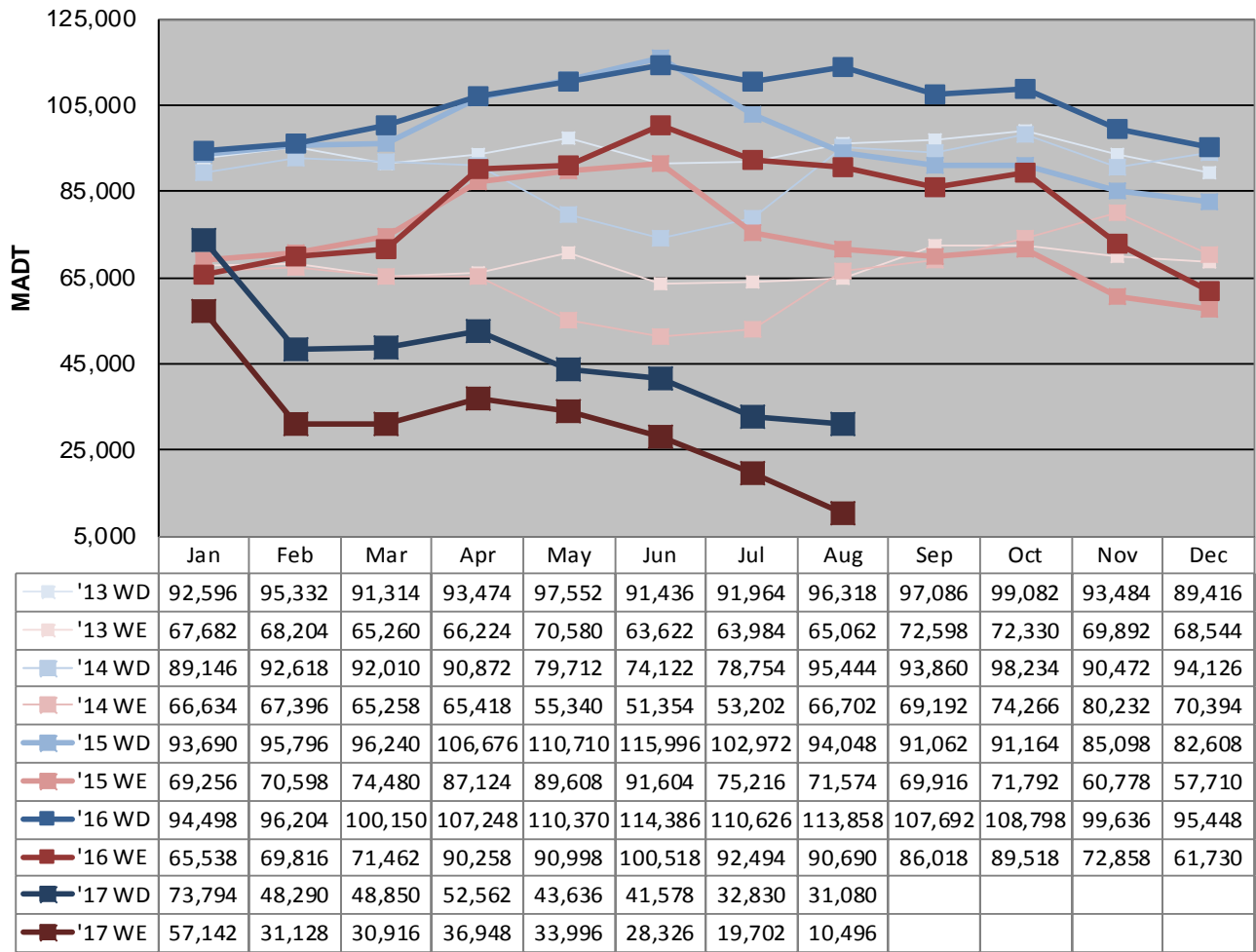
Station Measurement: VOLUME		
Route: TH 169	Route Direction: N/S	Lanes: 4
County: Hennepin		Closest City: St Louis Park
Functional Class: Urban Principal Arterial - Other Freeways or Expressways		
Location: N OF MSAS296 (CEDAR LAKE RD) IN ST LOUIS PARK		
Ref Post: 128+00.870	True Mile: 126.71	Sequence No. 9883
Volume: 801,534		MADT: 25,856
Weekday (M-F) MADT: 31,080		Weekend (Sa-Su) MADT: 10,496



Note: Decrease in traffic June to August 2013, May to July 2014, December 2015, and January to June 2017 due to construction on TH 169... Increase in traffic April to July 2015 and June to October 2016 due to detour from TH 100



Weekday (WD)/Weekend (WE) Monthly Average Daily Traffic



Note: 'Weekday' defined as Monday-Friday, 'Weekend' defined as Saturday-Sunday

Weekday/Weekend Monthly Average Daily Traffic ('13-'17)

