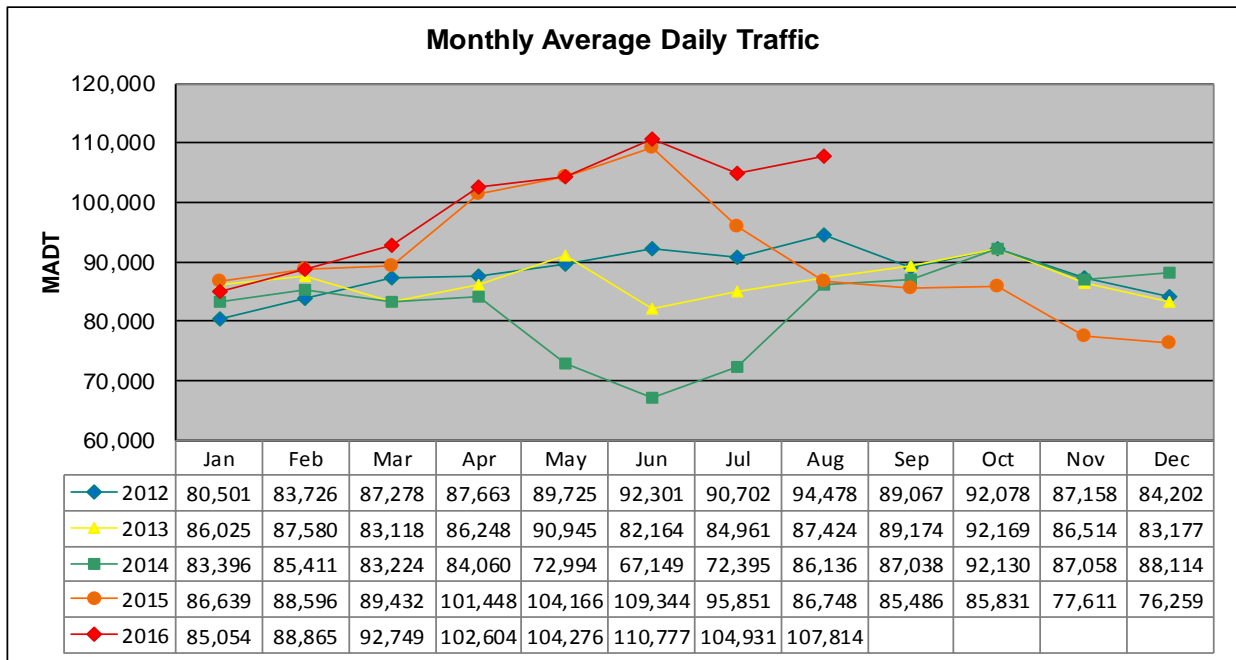


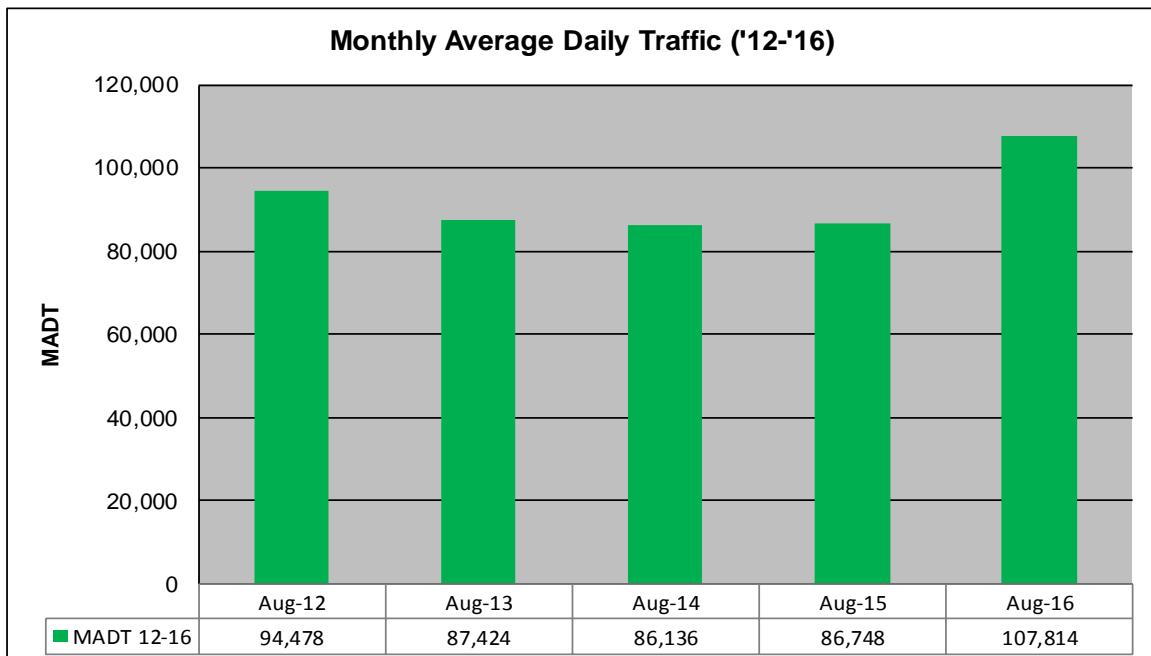
MONTHLY REPORT, STATION NO. 405 (ATR)

AUGUST 2016

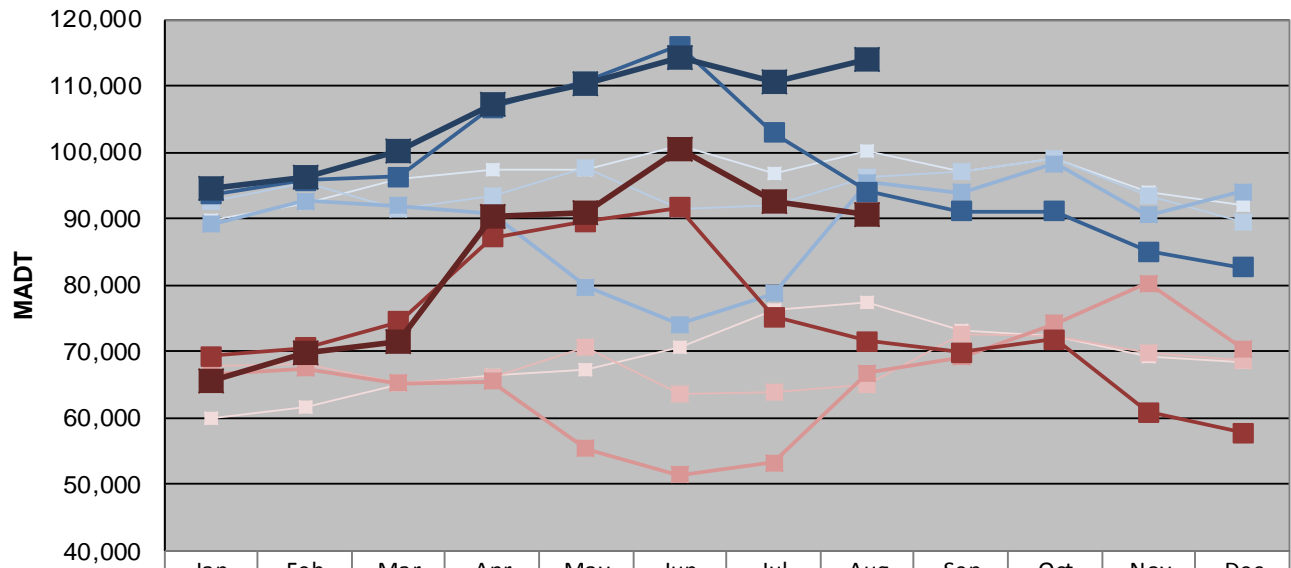
Station Measurement: VOLUME		
Route: TH 169	Route Direction: N/S	Lanes: 4
County: Hennepin		Closest City: St Louis Park
Functional Class: Urban Principal Arterial - Other Freeways or Expressways		
Location: N OF MSAS296 (CEDAR LAKE RD) IN ST LOUIS PARK		
Ref Post: 128+00.870	True Mile: 126.71	Sequence No. 9883
Volume: 3,342,233		MADT: 107,814
Weekday (M-F) MADT: 113,858		Weekend (Sa-Su) MADT: 90,690



Note: Decrease in traffic June to August 2013, May to July 2014, and December 2015 due to construction on TH 169...
 Increase in traffic April to July 2015 and June to August 2016 due to detour from TH 100



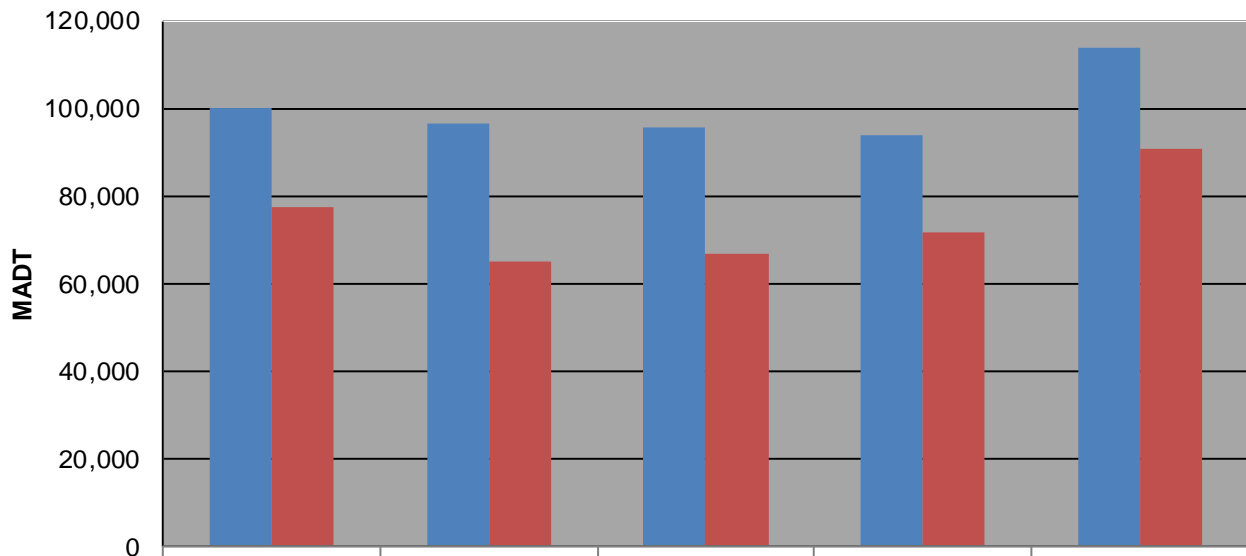
Weekday (WD)/Weekend (WE) Monthly Average Daily Traffic



	Jan	Feb	Mar	Apr	May	Jun	Jul	Aug	Sep	Oct	Nov	Dec
'12 WD	89,714	92,288	95,978	97,246	97,256	101,148	96,822	100,274	97,030	99,116	94,060	92,002
'12 WE	59,788	61,630	64,860	66,394	67,284	70,722	76,130	77,458	73,144	72,218	69,248	68,238
'13 WD	92,596	95,332	91,314	93,474	97,552	91,436	91,964	96,318	97,086	99,082	93,484	89,416
'13 WE	67,682	68,204	65,260	66,224	70,580	63,622	63,984	65,062	72,598	72,330	69,892	68,544
'14 WD	89,146	92,618	92,010	90,872	79,712	74,122	78,754	95,444	93,860	98,234	90,472	94,126
'14 WE	66,634	67,396	65,258	65,418	55,340	51,354	53,202	66,702	69,192	74,266	80,232	70,394
'15 WD	93,690	95,796	96,240	106,676	110,710	115,996	102,972	94,048	91,062	91,164	85,098	82,608
'15 WE	69,256	70,598	74,480	87,124	89,608	91,604	75,216	71,574	69,916	71,792	60,778	57,710
'16 WD	94,498	96,204	100,150	107,248	110,370	114,386	110,626	113,858				
'16 WE	65,538	69,816	71,462	90,258	90,998	100,518	92,494	90,690				

Note: 'Weekday' defined as Monday-Friday, 'Weekend' defined as Saturday-Sunday

Weekday/Weekend Monthly Average Daily Traffic ('12-'16)



	Aug-12	Aug-13	Aug-14	Aug-15	Aug-16
Weekday	100,274	96,318	95,444	94,048	113,858
Weekend	77,458	65,062	66,702	71,574	90,690