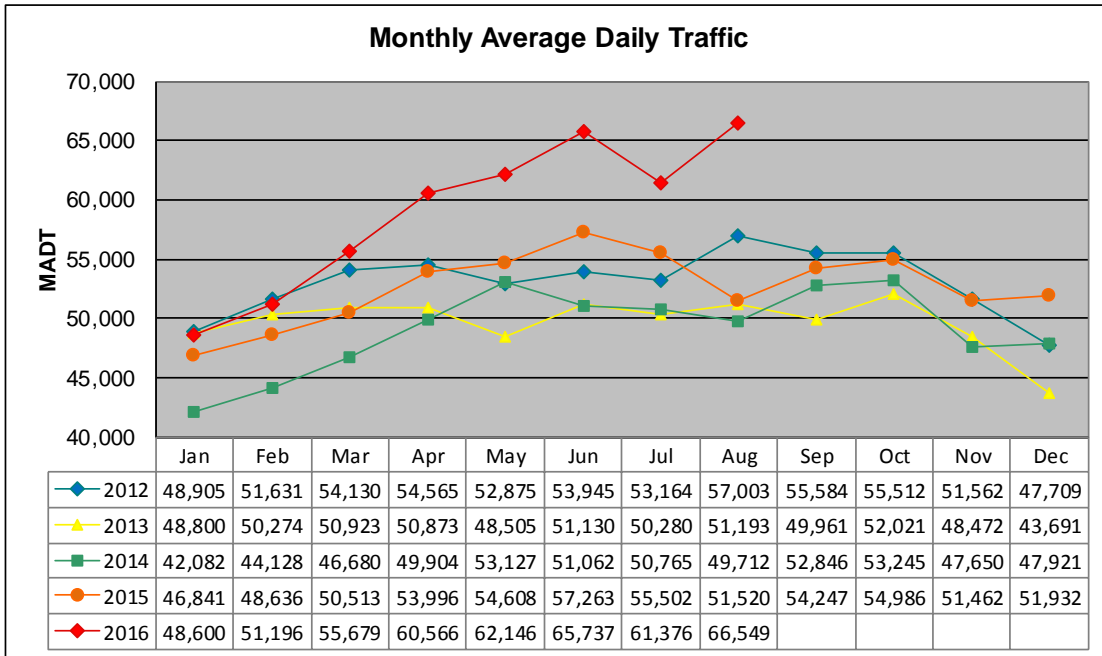


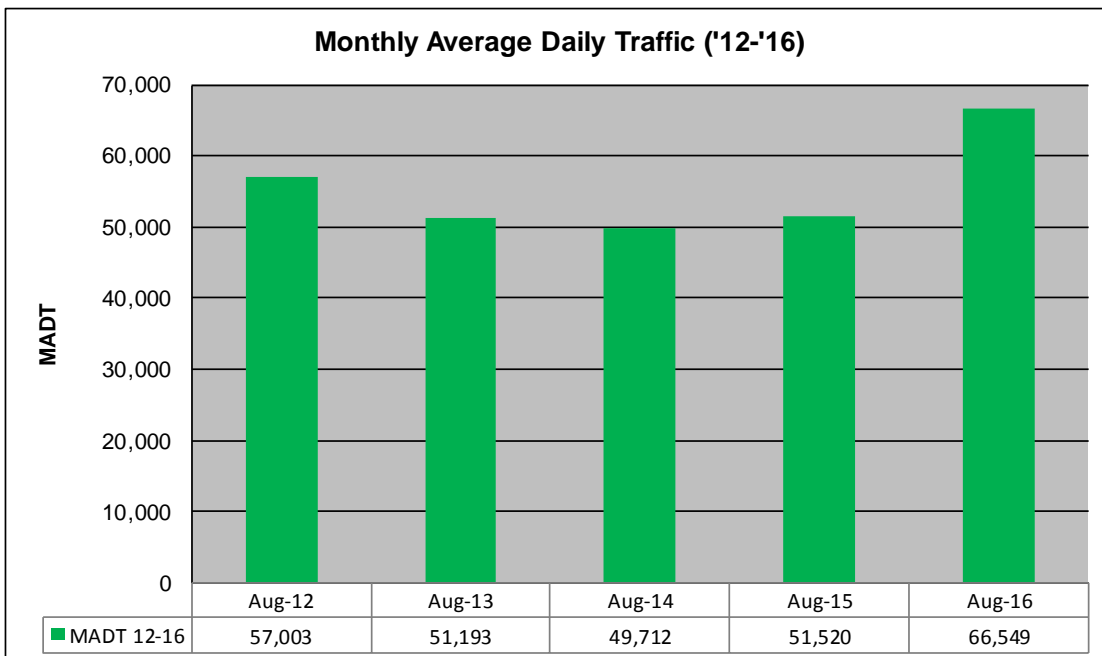
MONTHLY REPORT, STATION NO. 40 (WIM)

AUGUST 2016

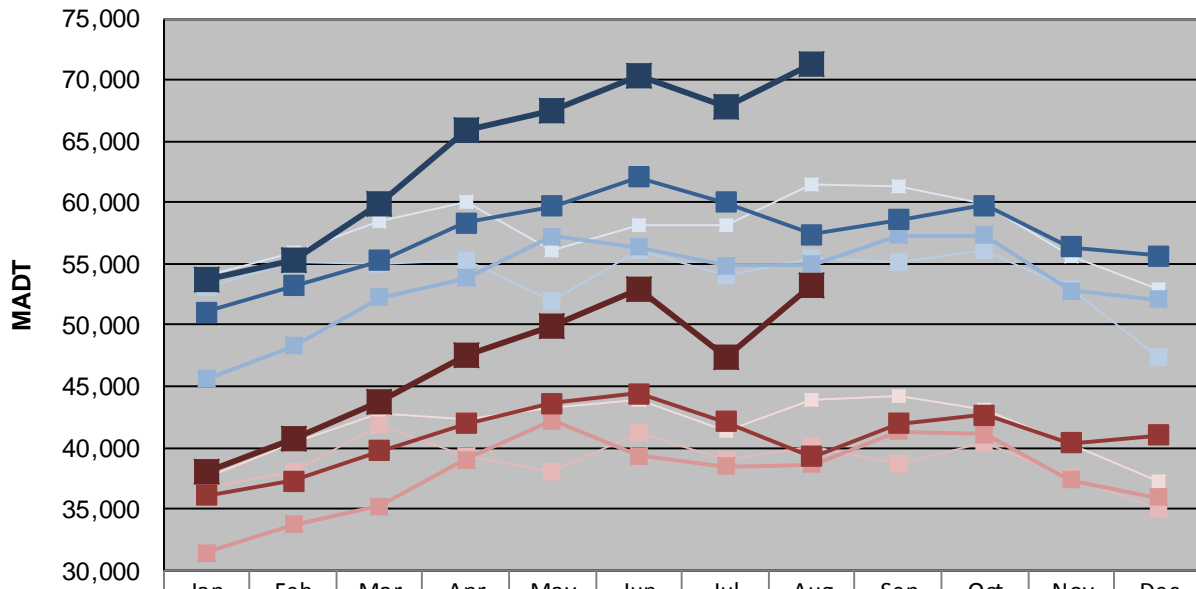
Station Measurement: VOLUME/SPEED/CLASS/WEIGHT		
Route: TH 52	Route Direction: N/S	Lanes: 4
County: Dakota		Closest City: West St Paul
Functional Class: Urban Principal Arterial - Other Freeways or Expressways		
Location: .5 MI N OF CSAH14 (SOUTHVIEW BLVD) IN W ST PAUL		
Ref Post: 126+00.677	True Mile: 127.015	Sequence No. 11537
Volume: 2,063,027		MADT: 66,549
Weekday (M-F) MADT: 71,262		Weekend (Sa-Su) MADT: 53,308



Note: Increase in traffic beginning in April 2016 due to the completion of the Lafayette Bridge project (2011-2015)



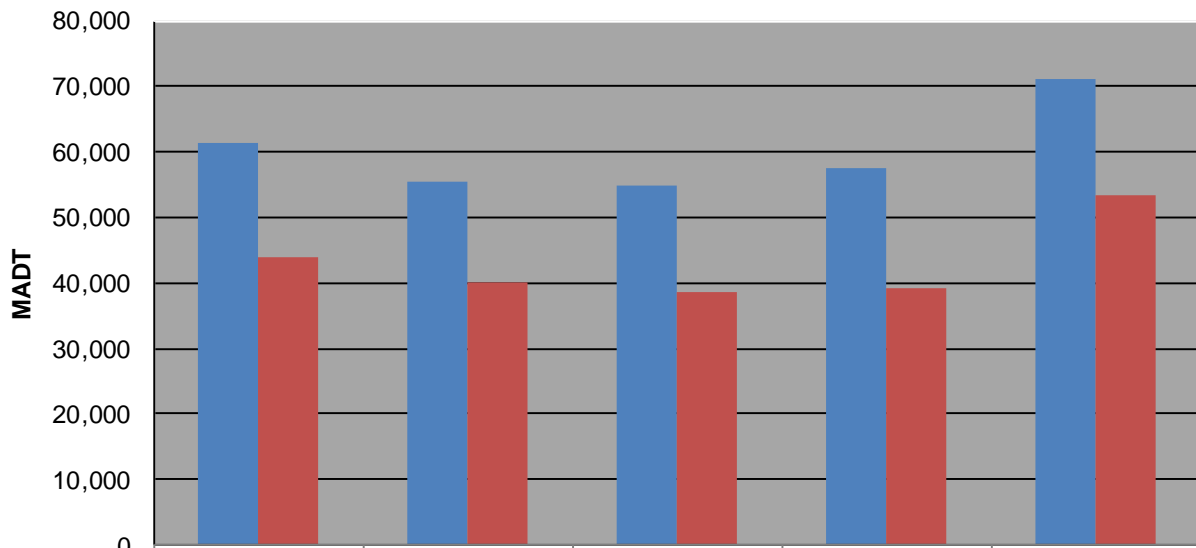
Weekday (WD)/Weekend (WE) Monthly Average Daily Traffic



	Jan	Feb	Mar	Apr	May	Jun	Jul	Aug	Sep	Oct	Nov	Dec
'12 WD	53,960	55,954	58,452	60,020	56,150	58,072	58,194	61,432	61,244	59,904	55,686	52,898
'12 WE	37,616	40,422	42,728	42,346	43,200	43,830	41,416	43,938	44,264	43,172	40,210	37,250
'13 WD	53,038	55,136	55,024	55,224	51,922	56,058	54,092	55,490	55,102	56,064	52,958	47,412
'13 WE	36,768	38,118	41,850	39,254	38,080	41,270	38,920	40,112	38,748	40,362	37,526	35,088
'14 WD	45,576	48,298	52,216	53,836	57,260	56,342	54,852	54,944	57,300	57,324	52,784	52,062
'14 WE	31,400	33,706	35,242	39,026	42,190	39,368	38,484	38,654	41,304	41,086	37,382	35,980
'15 WD	51,080	53,176	55,280	58,334	59,668	62,048	60,024	57,418	58,620	59,742	56,372	55,690
'15 WE	36,142	37,288	39,764	41,938	43,602	44,436	42,152	39,302	41,942	42,686	40,392	41,006
'16 WD	53,642	55,300	59,820	65,864	67,552	70,324	67,858	71,262				
'16 WE	38,078	40,726	43,752	47,496	49,960	52,938	47,442	53,308				

Note: 'Weekday' defined as Monday-Friday, 'Weekend' defined as Saturday-Sunday

Weekday/Weekend Monthly Average Daily Traffic ('12-'16)



	Aug-12	Aug-13	Aug-14	Aug-15	Aug-16
Weekday	61,432	55,490	54,944	57,418	71,262
Weekend	43,938	40,112	38,654	39,302	53,308