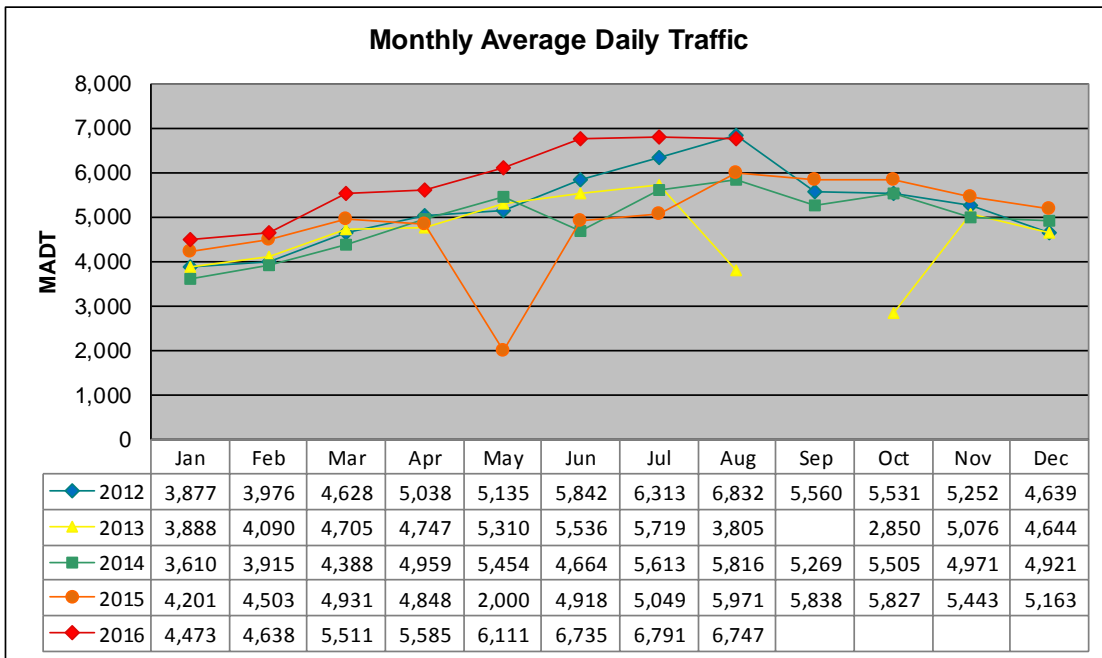


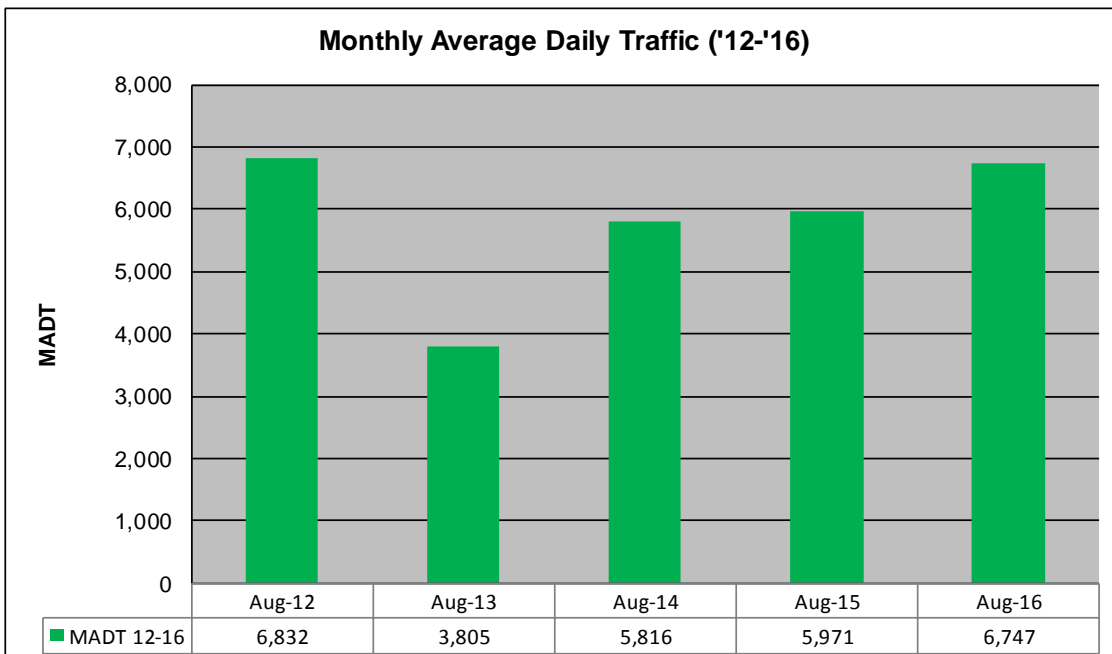
# MONTHLY REPORT, STATION NO. 27 (WIM)

## AUGUST 2016

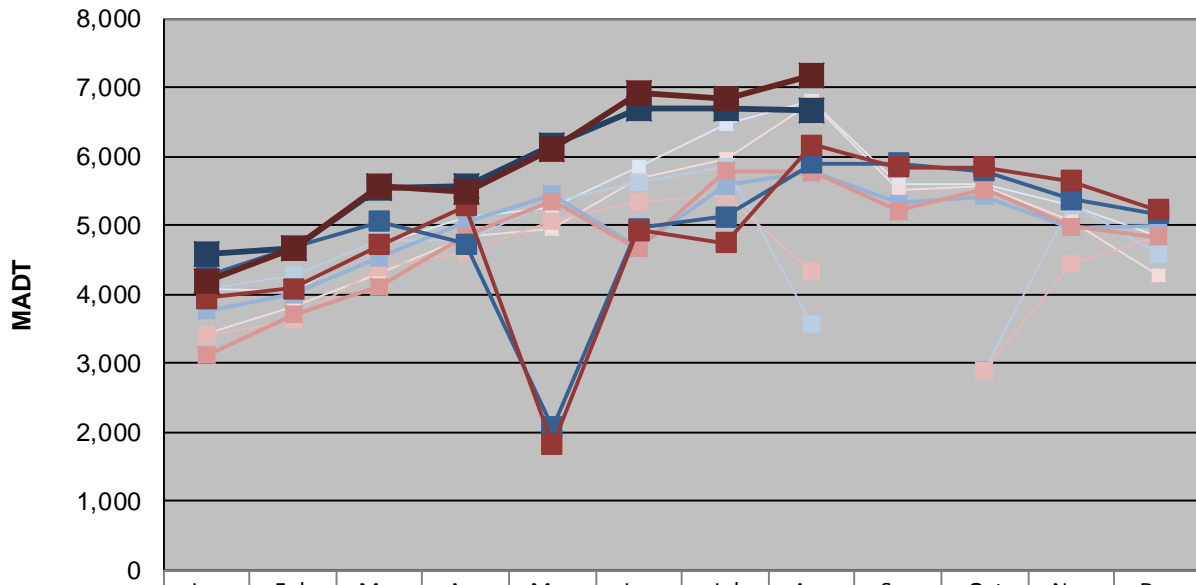
|  |                        |                                    |
|--|------------------------|------------------------------------|
| Station Measurement: VOLUME/SPEED/CLASS/WEIGHT     |                        |                                    |
| Route: TH 60                                       | Route Direction: E/W   | Lanes: 4                           |
| County: Watonwan                                   | Closest City: St James |                                    |
| Functional Class: Rural Principal Arterial - Other |                        |                                    |
| Location: .7 MI W OF W JCT OF TH4, SW OF ST JAMES  |                        |                                    |
| Ref Post: 064+00.850                               | True Mile: 64.929      | Sequence No. 9830                  |
| <b>Volume: 209,149</b>                             |                        | <b>MADT: 6,747</b>                 |
| <b>Weekday (M-F) MADT: 6,666</b>                   |                        | <b>Weekend (Sa-Su) MADT: 7,182</b> |



Note: No data Sep '13; road closed for reconstruction... Increase in traffic Jun/Jul '16 due to detour... Decrease in traffic Aug/Oct '13, Jun/Jul '14, and May to Jul '15 due to construction on... Volume data reported as ATR 197 from '12-'14



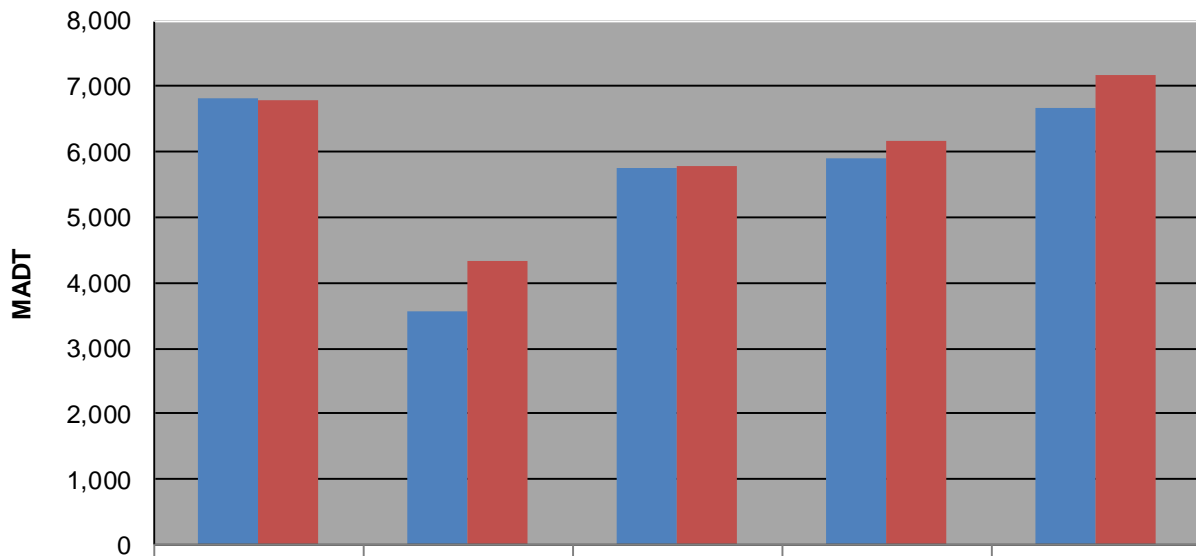
**Weekday (WD)/Weekend (WE) Monthly Average Daily Traffic**



|        | Jan   | Feb   | Mar   | Apr   | May   | Jun   | Jul   | Aug   | Sep   | Oct   | Nov   | Dec   |
|--------|-------|-------|-------|-------|-------|-------|-------|-------|-------|-------|-------|-------|
| '12 WD | 4,076 | 4,050 | 4,720 | 5,120 | 5,252 | 5,860 | 6,464 | 6,808 | 5,586 | 5,596 | 5,288 | 4,844 |
| '12 WE | 3,420 | 3,828 | 4,300 | 4,832 | 4,948 | 5,690 | 5,952 | 6,780 | 5,512 | 5,564 | 5,048 | 4,284 |
| '13 WD | 4,080 | 4,280 | 4,790 | 4,792 | 5,354 | 5,626 | 5,840 | 3,560 |       | 2,882 | 5,314 | 4,592 |
| '13 WE | 3,412 | 3,614 | 4,396 | 4,624 | 5,064 | 5,356 | 5,436 | 4,336 |       | 2,884 | 4,430 | 4,832 |
| '14 WD | 3,752 | 4,002 | 4,530 | 5,040 | 5,444 | 4,668 | 5,570 | 5,766 | 5,316 | 5,426 | 4,968 | 4,994 |
| '14 WE | 3,116 | 3,696 | 4,110 | 4,840 | 5,352 | 4,660 | 5,792 | 5,772 | 5,212 | 5,516 | 4,978 | 4,822 |
| '15 WD | 4,268 | 4,670 | 5,058 | 4,728 | 2,070 | 4,958 | 5,120 | 5,896 | 5,900 | 5,786 | 5,384 | 5,164 |
| '15 WE | 3,948 | 4,084 | 4,722 | 5,272 | 1,822 | 4,926 | 4,740 | 6,168 | 5,838 | 5,836 | 5,640 | 5,226 |
| '16 WD | 4,588 | 4,656 | 5,544 | 5,578 | 6,148 | 6,694 | 6,688 | 6,666 |       |       |       |       |
| '16 WE | 4,180 | 4,662 | 5,578 | 5,482 | 6,100 | 6,912 | 6,842 | 7,182 |       |       |       |       |

Note: 'Weekday' defined as Monday-Friday, 'Weekend' defined as Saturday-Sunday

**Weekday/Weekend Monthly Average Daily Traffic ('12-'16)**



|         | Aug-12 | Aug-13 | Aug-14 | Aug-15 | Aug-16 |
|---------|--------|--------|--------|--------|--------|
| Weekday | 6,808  | 3,560  | 5,766  | 5,896  | 6,666  |
| Weekend | 6,780  | 4,336  | 5,772  | 6,168  | 7,182  |