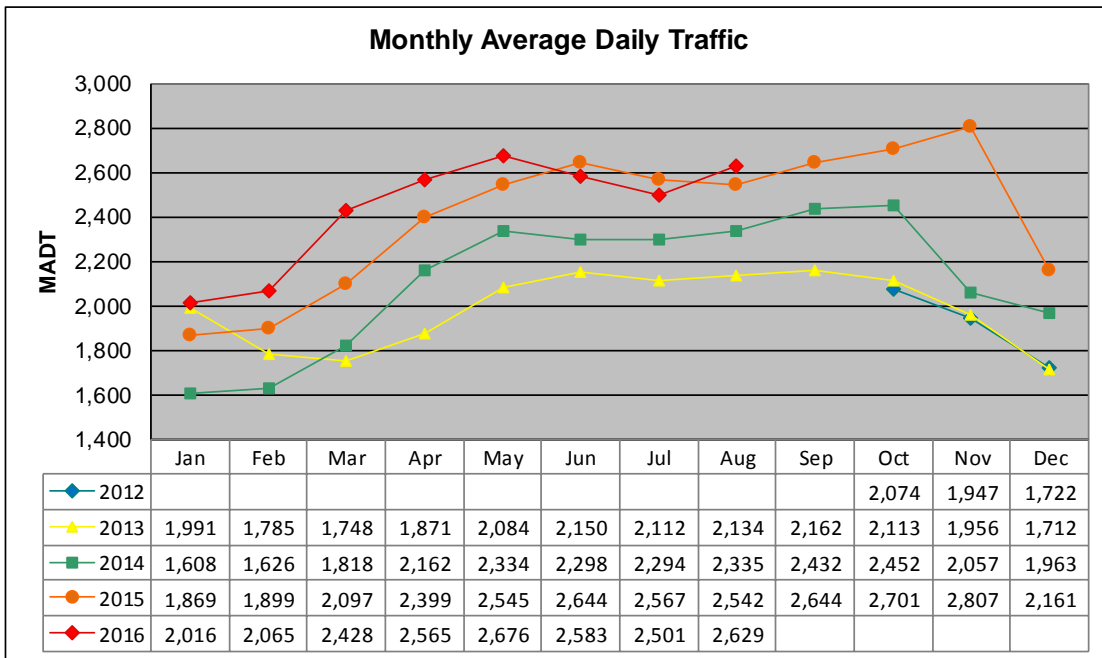


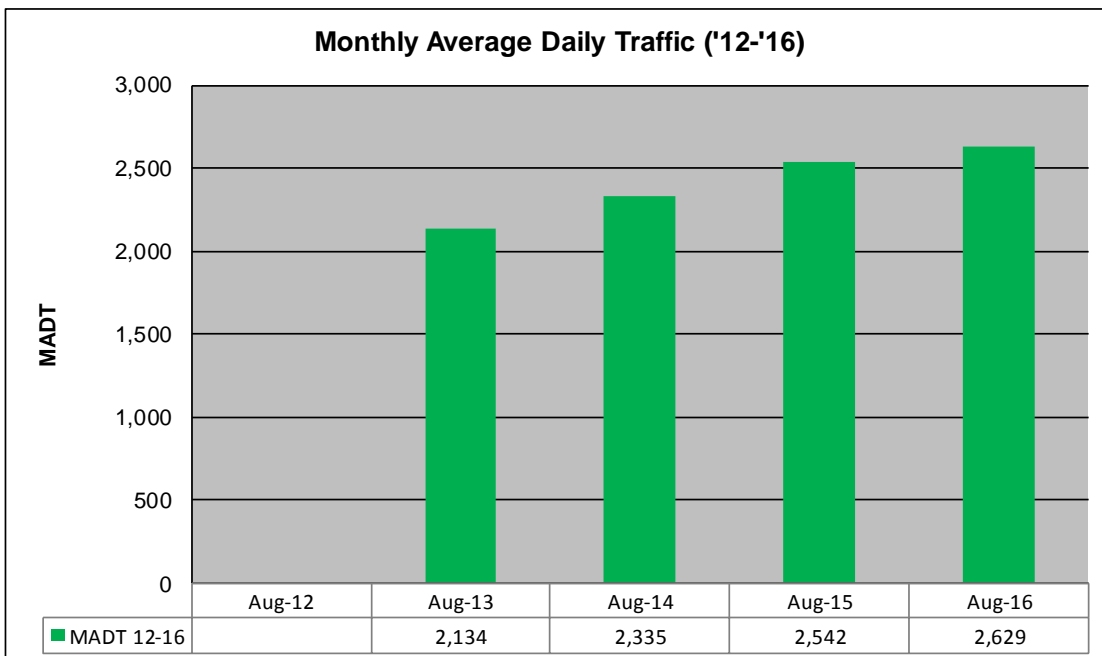
MONTHLY REPORT, STATION NO. 230 (ATR)

AUGUST 2016

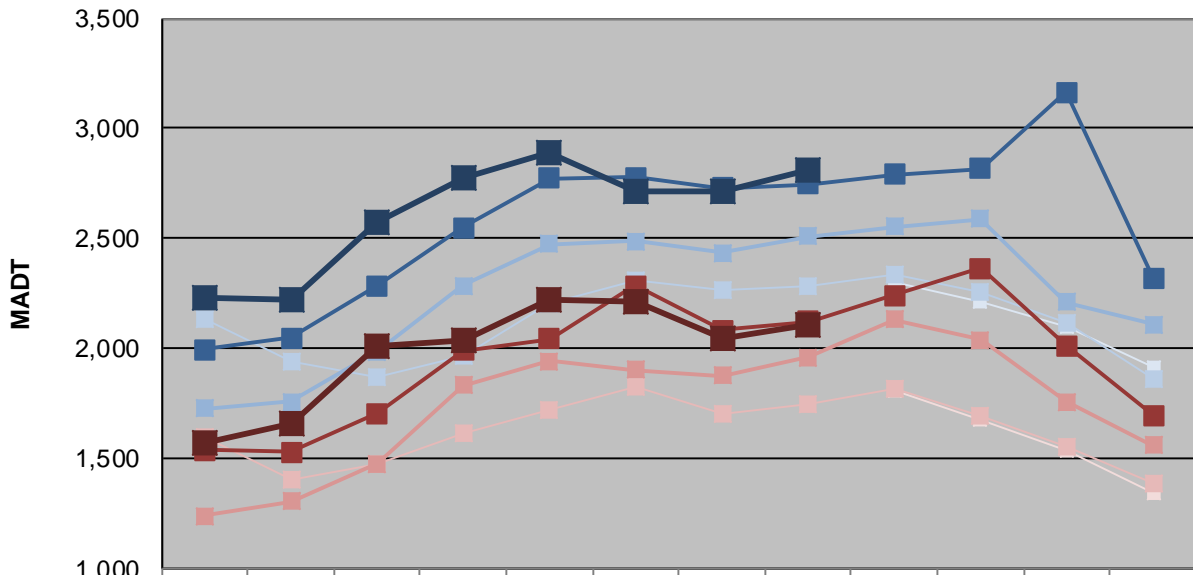
Station Measurement: VOLUME/SPEED/CLASS		
Route: CSAH 2	Route Direction: E/W	Lanes: 2
County: Rice	Closest City: Lonsdale	
Functional Class: Rural Minor Arterial		
Location: 3.4 MI W OF TH19 (INDEPENDENCE AVE), W OF LONSDALE		
Ref Post: 002+00.288	True Mile: 2.288	Sequence No. 33897
Volume: 81,486		MADT: 2,629
Weekday (M-F) MADT: 2,808		Weekend (Sa-Su) MADT: 2,110



Note: Increase in traffic November 2015 and March/April 2016 due to detours from TH 19



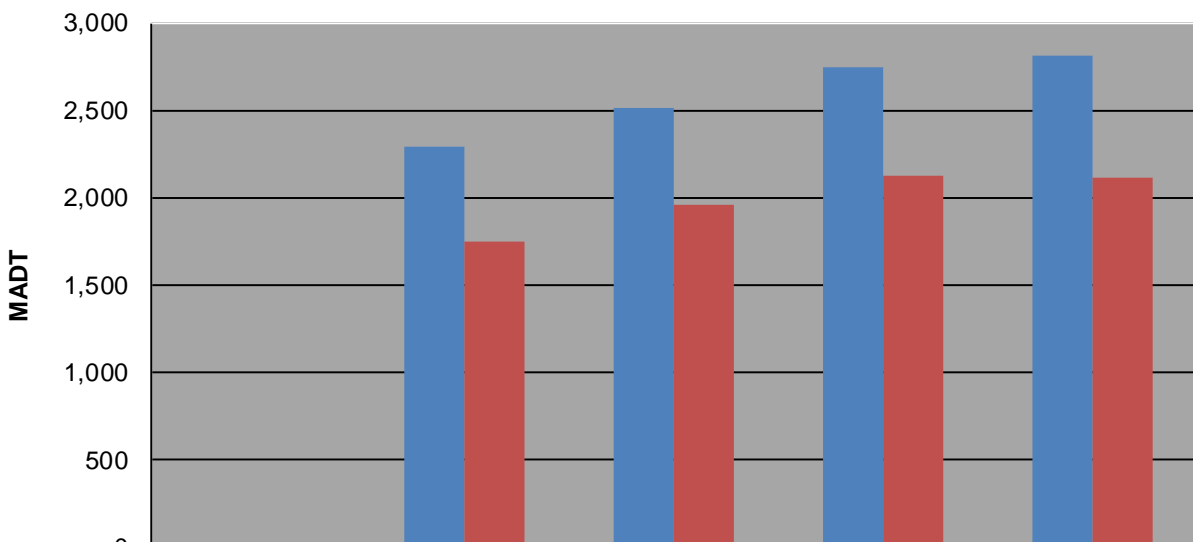
Weekday (WD)/Weekend (WE) Monthly Average Daily Traffic



	Jan	Feb	Mar	Apr	May	Jun	Jul	Aug	Sep	Oct	Nov	Dec
'12 WD									2,302	2,216	2,094	1,912
'12 WE									1,804	1,674	1,536	1,338
'13 WD	2,134	1,938	1,868	1,964	2,204	2,312	2,262	2,286	2,336	2,254	2,118	1,860
'13 WE	1,592	1,402	1,476	1,610	1,716	1,826	1,698	1,746	1,816	1,694	1,554	1,382
'14 WD	1,728	1,756	1,986	2,284	2,472	2,486	2,432	2,508	2,554	2,588	2,208	2,108
'14 WE	1,236	1,302	1,476	1,830	1,940	1,900	1,874	1,958	2,132	2,040	1,758	1,558
'15 WD	1,994	2,046	2,284	2,548	2,774	2,778	2,728	2,746	2,790	2,816	3,166	2,322
'15 WE	1,538	1,530	1,702	1,988	2,044	2,286	2,082	2,122	2,240	2,362	2,012	1,696
'16 WD	2,230	2,222	2,576	2,772	2,886	2,710	2,714	2,808				
'16 WE	1,568	1,658	2,012	2,034	2,220	2,214	2,044	2,110				

Note: 'Weekday' defined as Monday-Friday, 'Weekend' defined as Saturday-Sunday

Weekday/Weekend Monthly Average Daily Traffic ('12-'16)



	Aug-12	Aug-13	Aug-14	Aug-15	Aug-16
Weekday		2,286	2,508	2,746	2,808
Weekend		1,746	1,958	2,122	2,110