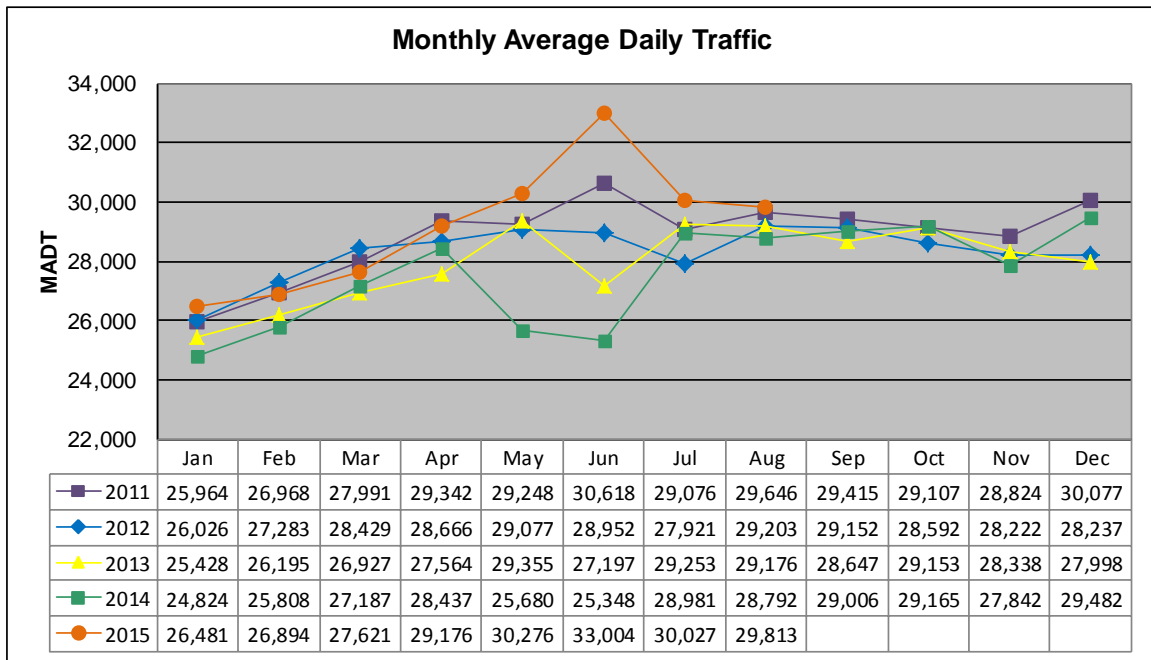
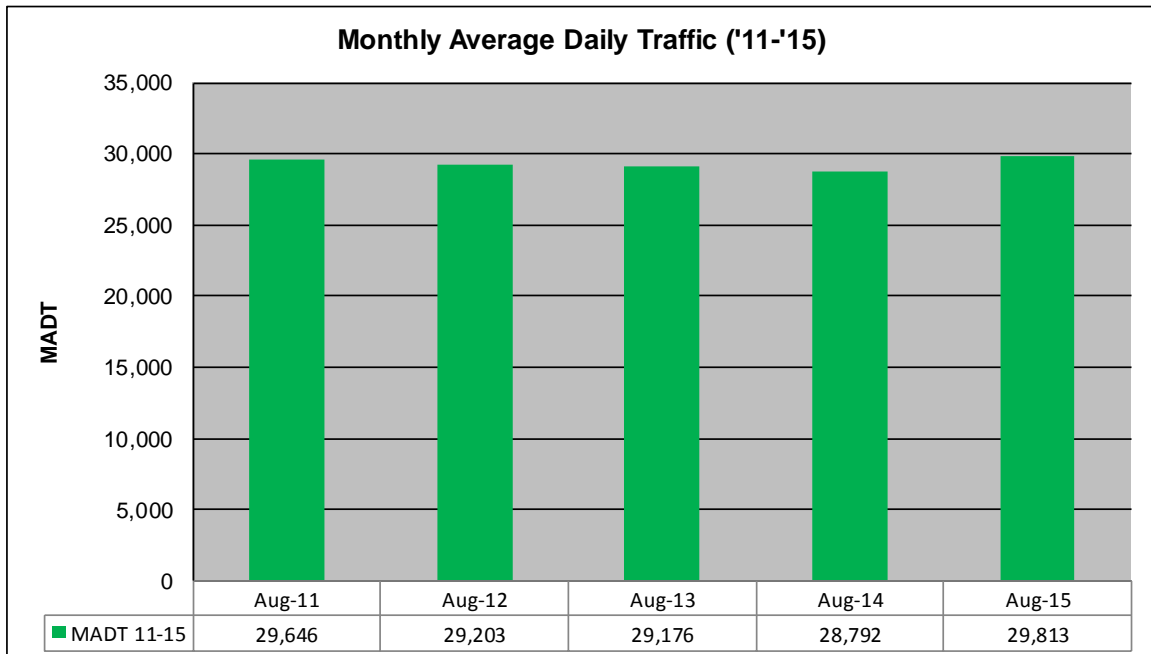


# MONTHLY REPORT, STATION NO. 420 (ATR) AUGUST 2015

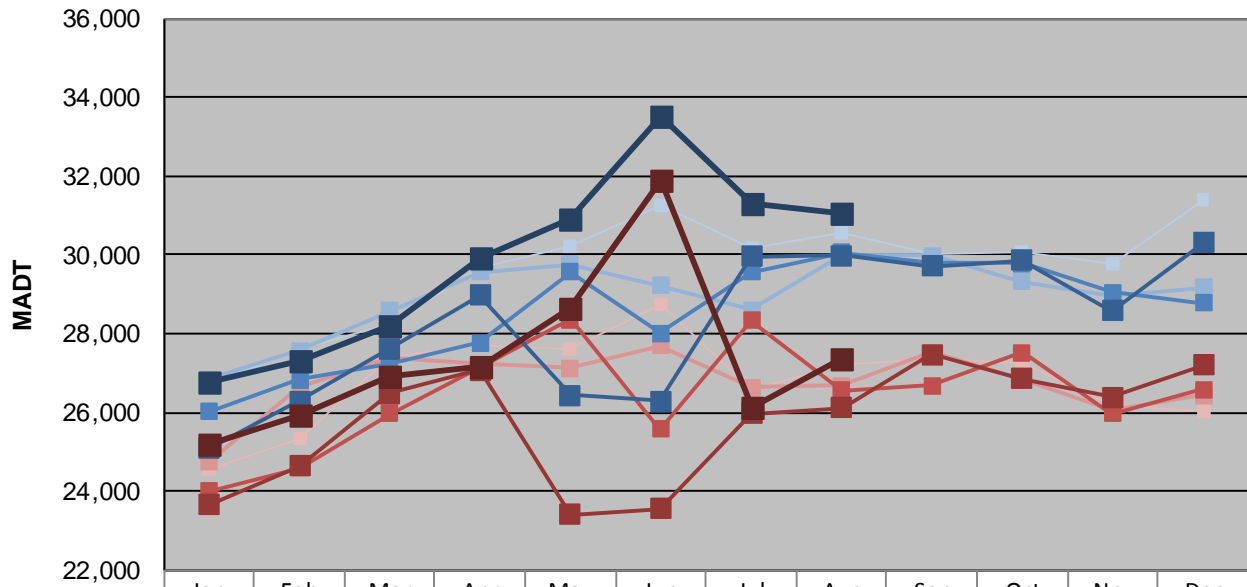
<b>Station Measurement: VOLUME</b>		
Route: CSAH 42	Route Direction: E/W	Lanes: 6
County: Dakota		Closest City: Burnsville
Functional Class: Urban Other Principal Arterial		
Location: W OF MSAS101 (PORTLAND AVE) IN BURNSVILLE		
Ref Post: 003+00.070	True Mile: 3.07	Sequence No. 9892
<b>Volume: 924,216</b>		<b>MADT: 29,813</b>
<b>Weekday (M-F) MADT: 31,032</b>		<b>Weekend (Sa-Su) MADT: 27,158</b>



Note: Decrease in traffic June 2013 and May/June 2014 due to construction on CSAH 42... Increase in traffic June 2015 due to detours



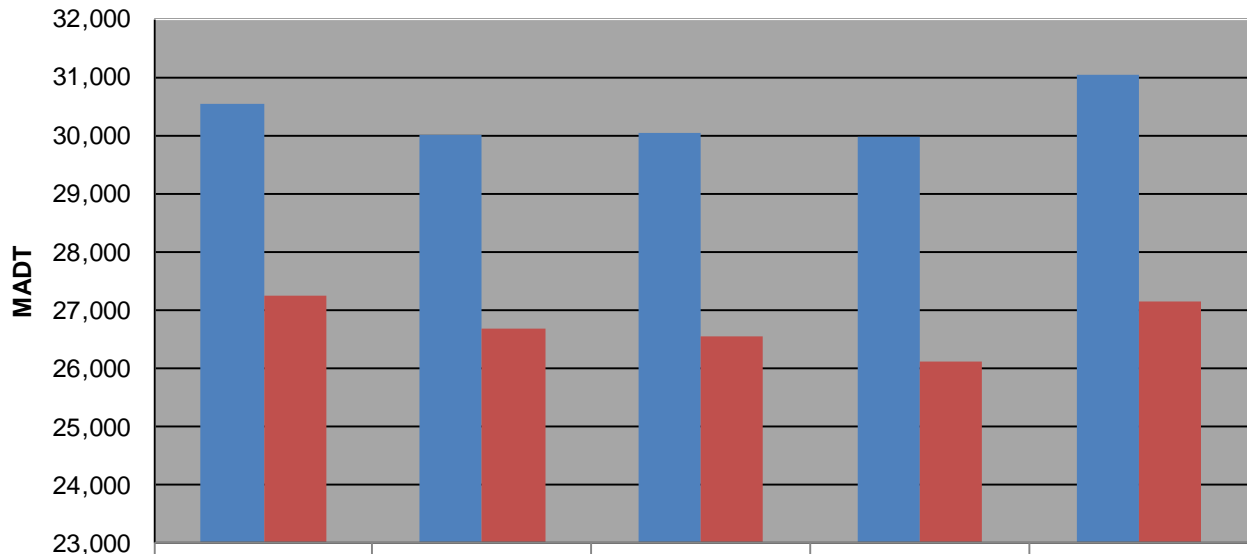
**Weekday (WD)/Weekend (WE) Monthly Average Daily Traffic**



	Jan	Feb	Mar	Apr	May	Jun	Jul	Aug	Sep	Oct	Nov	Dec
'11 WD	26,726	27,612	28,254	29,686	30,192	31,266	30,158	30,552	30,004	30,064	29,754	31,406
'11 WE	24,542	25,332	27,416	27,720	27,582	28,756	26,570	27,232	27,348	27,266	26,192	26,050
'12 WD	26,820	27,566	28,584	29,556	29,766	29,226	28,592	30,000	29,972	29,322	28,982	29,164
'12 WE	24,748	26,622	27,384	27,224	27,122	27,698	26,630	26,674	27,514	26,860	26,044	26,428
'13 WD	26,008	26,842	27,214	27,774	29,574	28,008	29,558	30,054	29,778	29,786	29,054	28,784
'13 WE	23,990	24,578	25,974	27,118	28,348	25,576	28,342	26,558	26,676	27,508	25,968	26,582
'14 WD	25,074	26,278	27,614	28,980	26,432	26,292	29,946	29,988	29,702	29,868	28,566	30,296
'14 WE	23,650	24,634	26,482	27,066	23,416	23,548	25,980	26,122	27,478	26,858	26,396	27,206
'15 WD	26,776	27,286	28,182	29,918	30,924	33,514	31,280	31,032				
'15 WE	25,200	25,914	26,936	27,158	28,616	31,900	26,148	27,374				

Note: 'Weekday' defined as Monday-Friday, 'Weekend' defined as Saturday-Sunday

**Weekday/Weekend Monthly Average Daily Traffic ('11-'15)**



	Aug-11	Aug-12	Aug-13	Aug-14	Aug-15
Weekday	30,552	30,000	30,054	29,988	31,032
Weekend	27,232	26,674	26,558	26,122	27,158