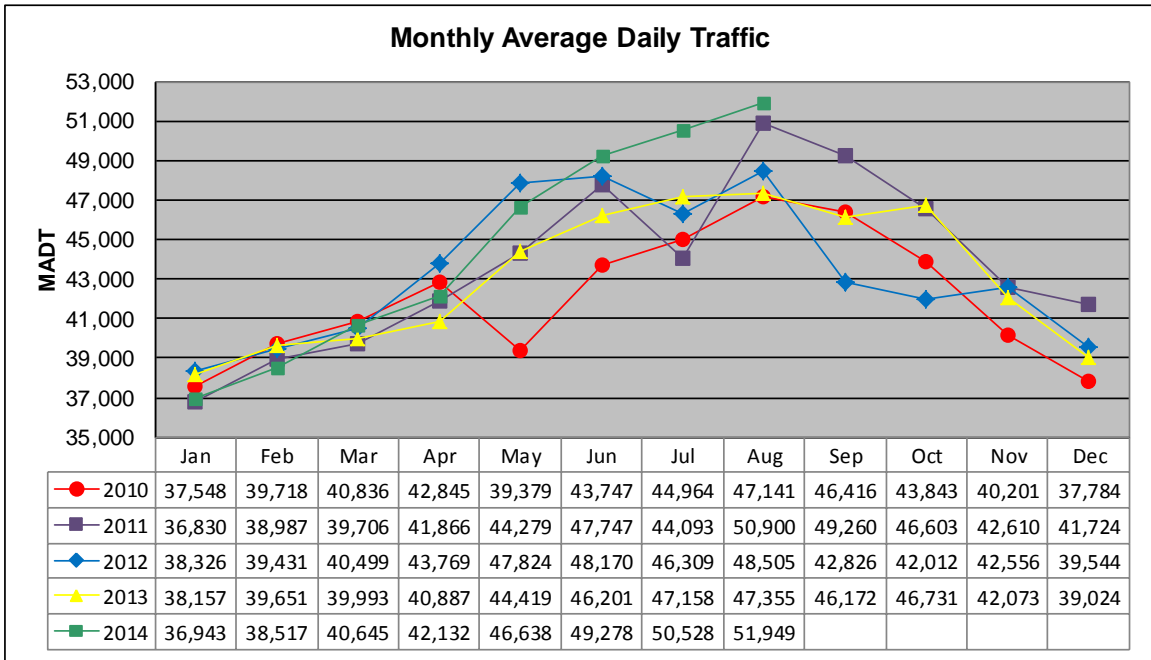
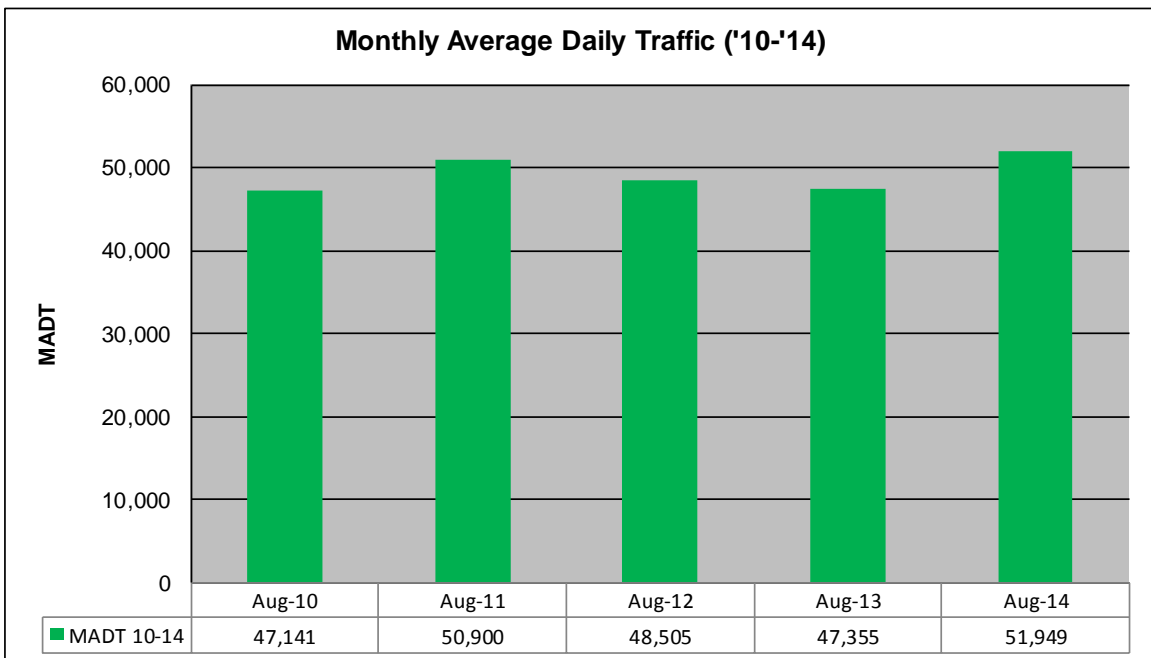


MONTHLY REPORT, STATION NO. 335 (ATR) AUGUST 2014

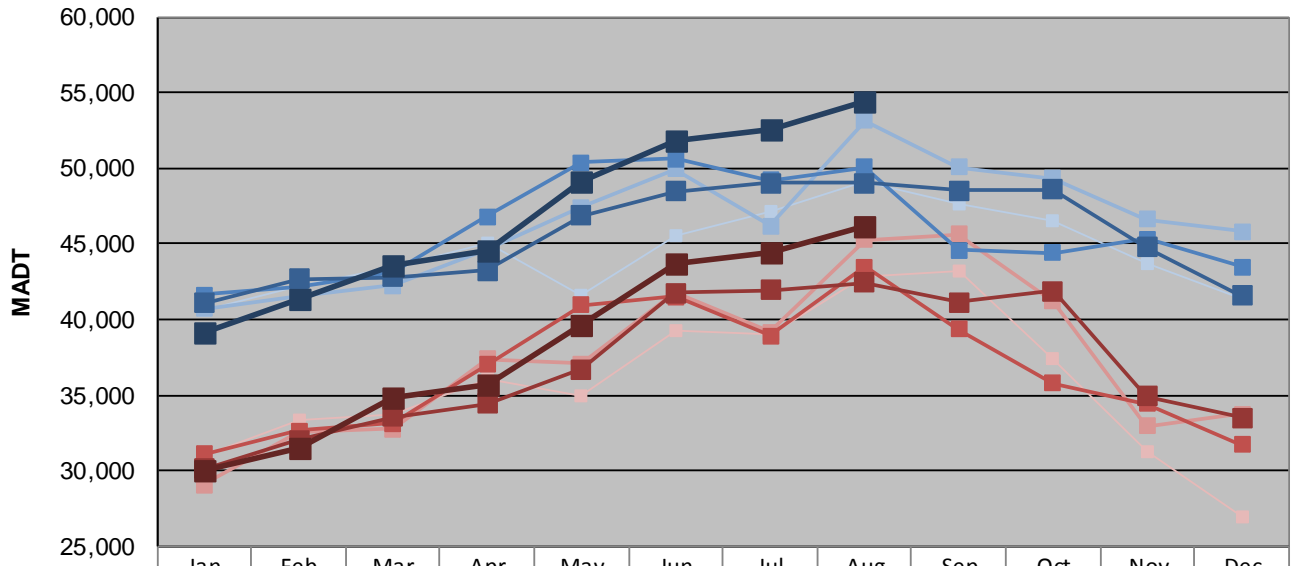
Station Measurement: VOLUME/SPEED/CLASS		
Route: I-35W	Route Direction: N/S	Lanes: 4
County: Anoka		Closest City: Blaine
Functional Class: Urban Principal Arterial - Interstate		
Location: W OF CR53 (SUNSET AVE NE) IN BLAINE		
Ref Post: 033+00.752	True Mile: 33.787	Sequence No. 9853
Volume: 1,610,427		MADT: 51,949
Weekday (M-F) MADT: 54,452		Weekend (Sa-Su) MADT: 46,102



Note: Decrease in traffic May to July 2010 and October 2012 due to construction on I-35W and TH 62



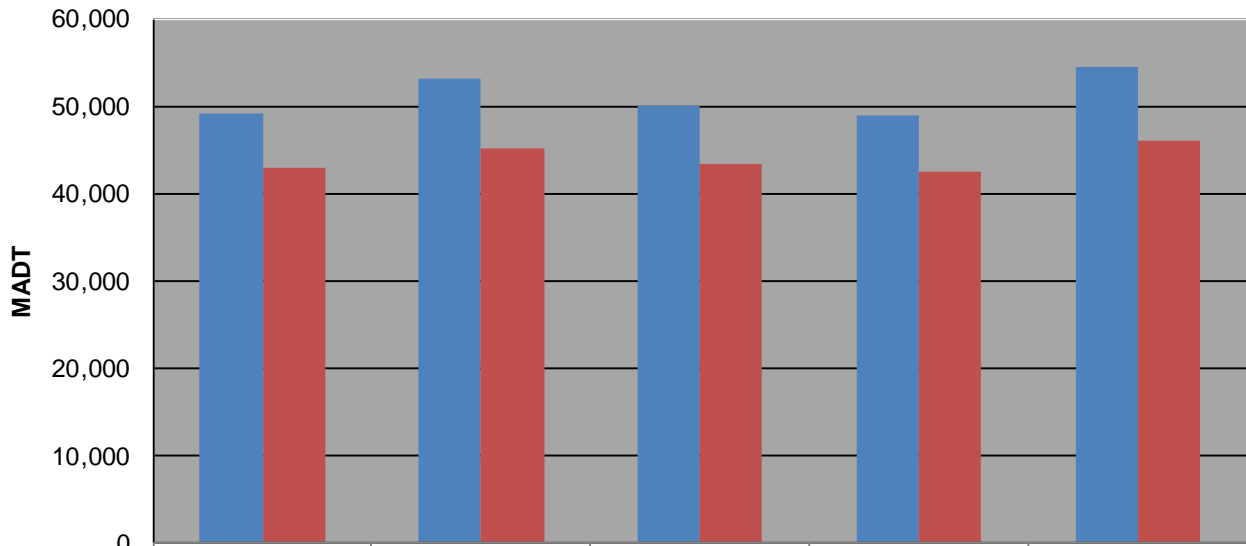
Weekday (WD)/Weekend (WE) Monthly Average Daily Traffic



	Jan	Feb	Mar	Apr	May	Jun	Jul	Aug	Sep	Oct	Nov	Dec
'10 WD	40,586	42,264	43,504	45,094	41,604	45,482	47,090	49,082	47,574	46,578	43,642	41,390
'10 WE	31,026	33,350	33,728	36,054	35,008	39,260	39,006	42,870	43,258	37,456	31,236	26,948
'11 WD	40,682	41,564	42,248	44,598	47,404	49,926	46,192	53,158	50,092	49,298	46,618	45,802
'11 WE	29,056	32,520	32,750	37,364	37,100	41,764	39,150	45,242	45,642	41,214	32,938	33,750
'12 WD	41,650	42,196	43,180	46,824	50,354	50,638	49,214	50,038	44,576	44,386	45,328	43,490
'12 WE	31,082	32,666	33,148	37,014	40,944	41,520	38,910	43,454	39,328	35,802	34,428	31,736
'13 WD	41,090	42,696	42,792	43,256	46,858	48,438	49,044	49,018	48,526	48,602	44,754	41,570
'13 WE	30,130	32,038	33,592	34,436	36,678	41,728	41,966	42,420	41,162	41,876	34,910	33,486
'14 WD	39,104	41,316	43,512	44,520	49,118	51,830	52,588	54,452				
'14 WE	30,002	31,520	34,846	35,708	39,576	43,670	44,476	46,102				

Note: 'Weekday' defined as Monday-Friday, 'Weekend' defined as Saturday-Sunday

Weekday/Weekend Monthly Average Daily Traffic ('10-'14)



	Aug-10	Aug-11	Aug-12	Aug-13	Aug-14
Weekday	49,082	53,158	50,038	49,018	54,452
Weekend	42,870	45,242	43,454	42,420	46,102