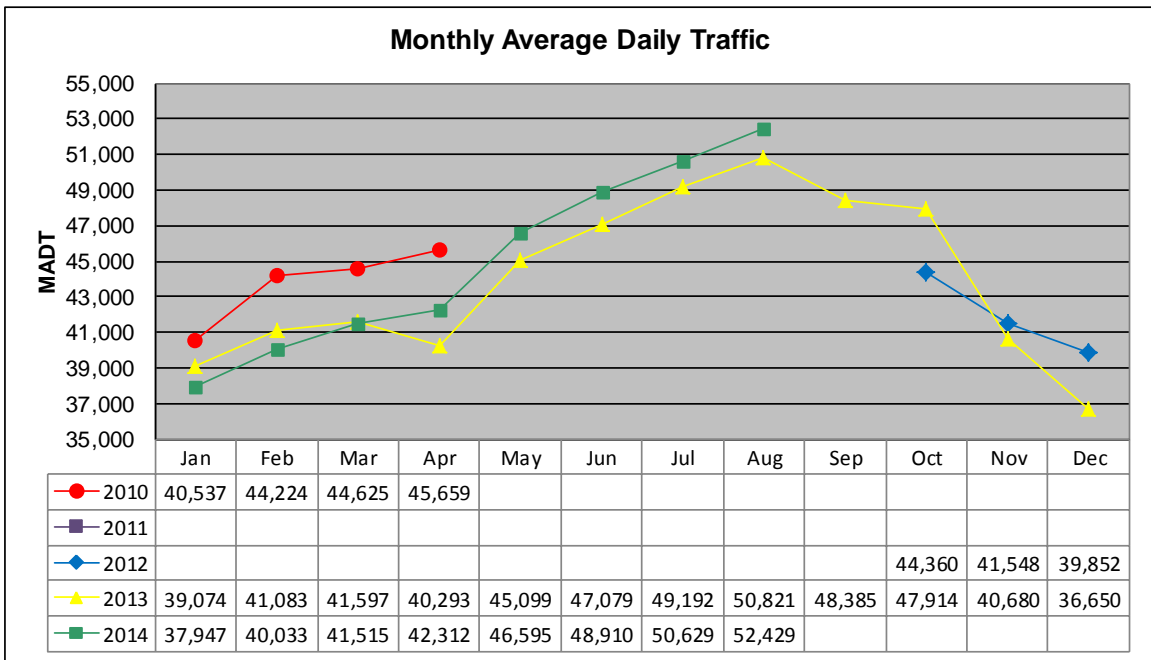


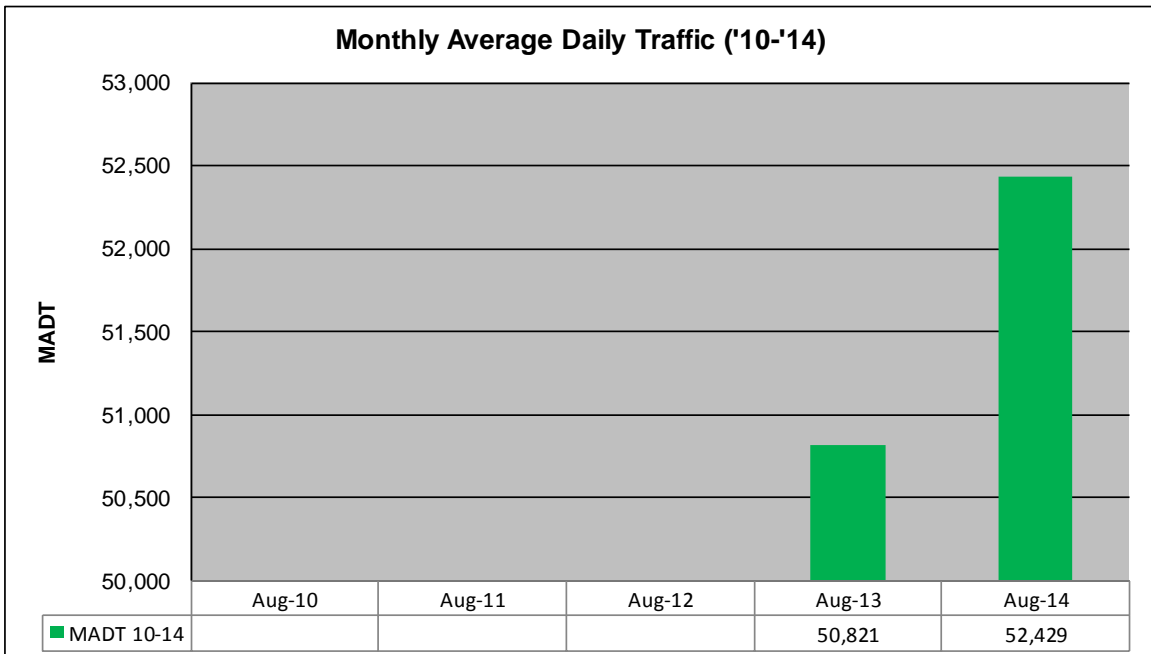
MONTHLY REPORT, STATION NO. 103 (ATR)

AUGUST 2014

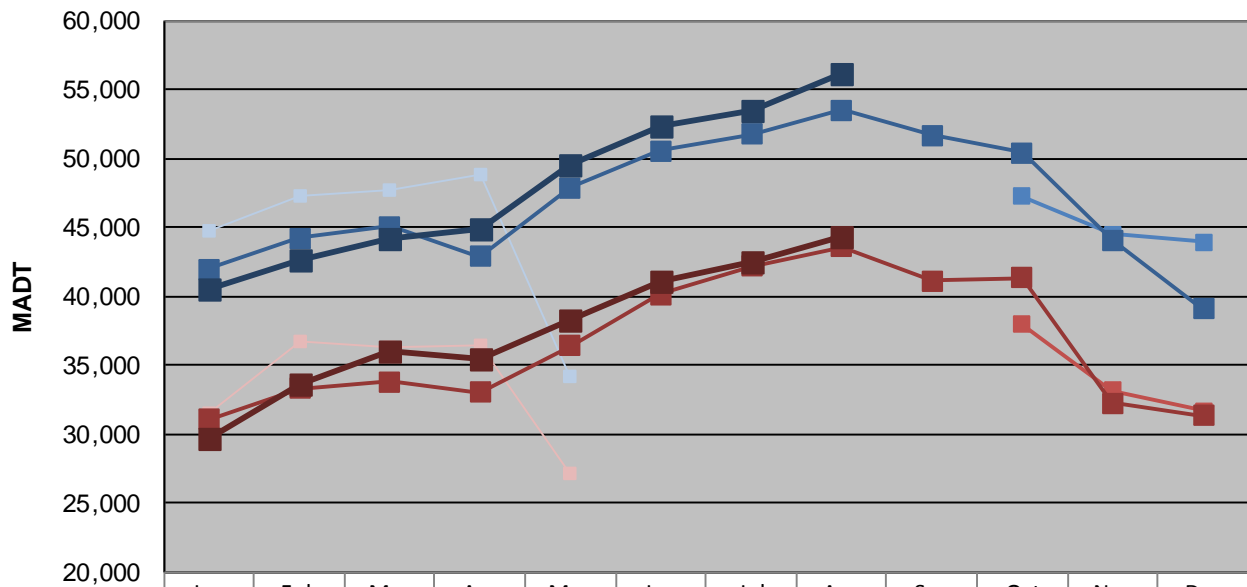
Station Measurement: VOLUME/SPEED/CLASS		
Route: I-35	Route Direction: N/S	Lanes: 4
County: St Louis	Closest City: Duluth	
Functional Class: Urban Principal Arterial - Interstate		
Location: E OF MSAS107 (CENTRAL AVE) IN DULUTH		
Ref Post: 252+00.600	True Mile: 252.622	Sequence No. 9825
Volume: 1,625,310		MADT: 52,429
Weekday (M-F) MADT: 56,076		Weekend (Sa-Su) MADT: 44,324



Note: No data from May 2010 to September 2012 due to sensors destroyed by construction



Weekday (WD)/Weekend (WE) Monthly Average Daily Traffic



	Jan	Feb	Mar	Apr	May	Jun	Jul	Aug	Sep	Oct	Nov	Dec
'10 WD	44,794	47,236	47,690	48,788	34,164							
'10 WE	31,468	36,696	36,306	36,452	27,184							
'11 WD												
'11 WE												
'12 WD										47,226	44,522	43,934
'12 WE										37,924	33,176	31,674
'13 WD	41,942	44,202	45,038	42,860	47,856	50,536	51,758	53,476	51,702	50,416	44,058	39,108
'13 WE	31,028	33,286	33,786	33,044	36,374	40,166	42,140	43,614	41,114	41,300	32,238	31,314
'14 WD	40,588	42,604	44,234	44,874	49,584	52,376	53,402	56,076				
'14 WE	29,680	33,606	35,954	35,482	38,336	41,080	42,448	44,324				

Note: 'Weekday' defined as Monday-Friday, 'Weekend' defined as Saturday-Sunday

Weekday/Weekend Monthly Average Daily Traffic ('10-'14)



	Aug-10	Aug-11	Aug-12	Aug-13	Aug-14
Weekday				53,476	56,076
Weekend				43,614	44,324