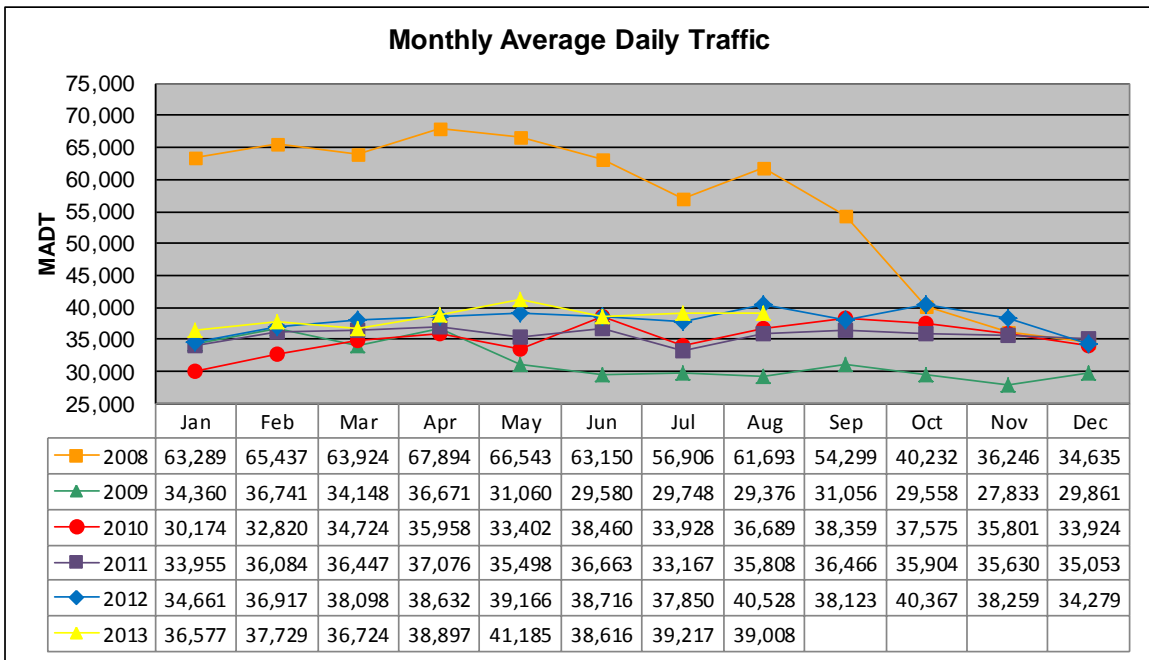


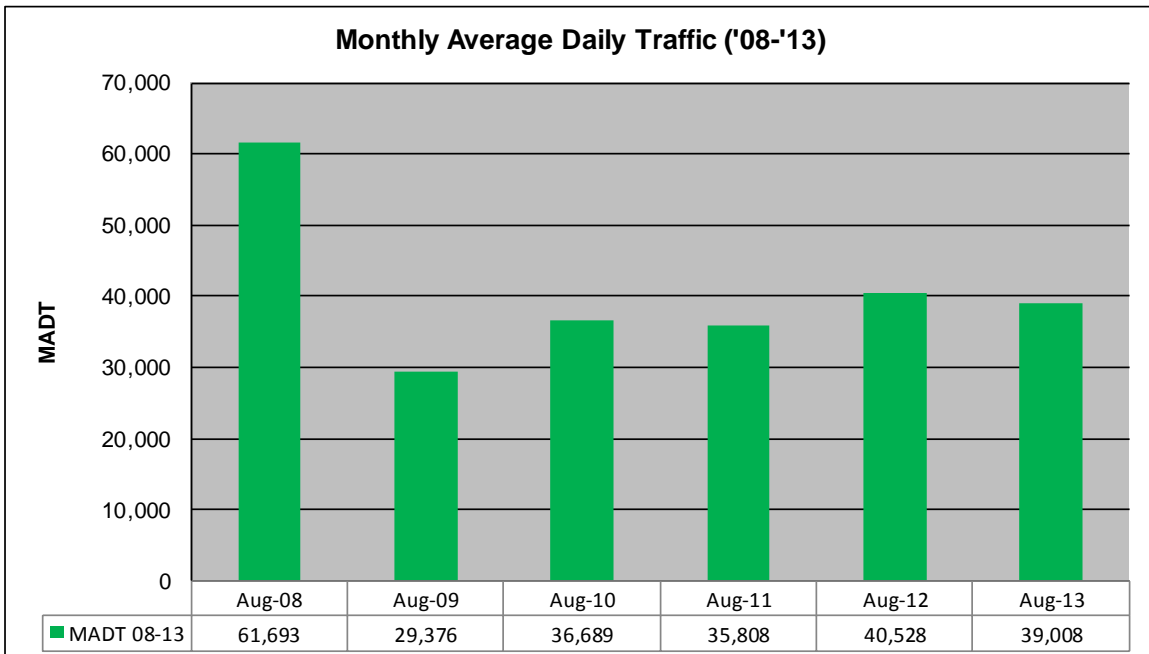
MONTHLY REPORT, STATION NO. 389 (ATR)

AUGUST 2013

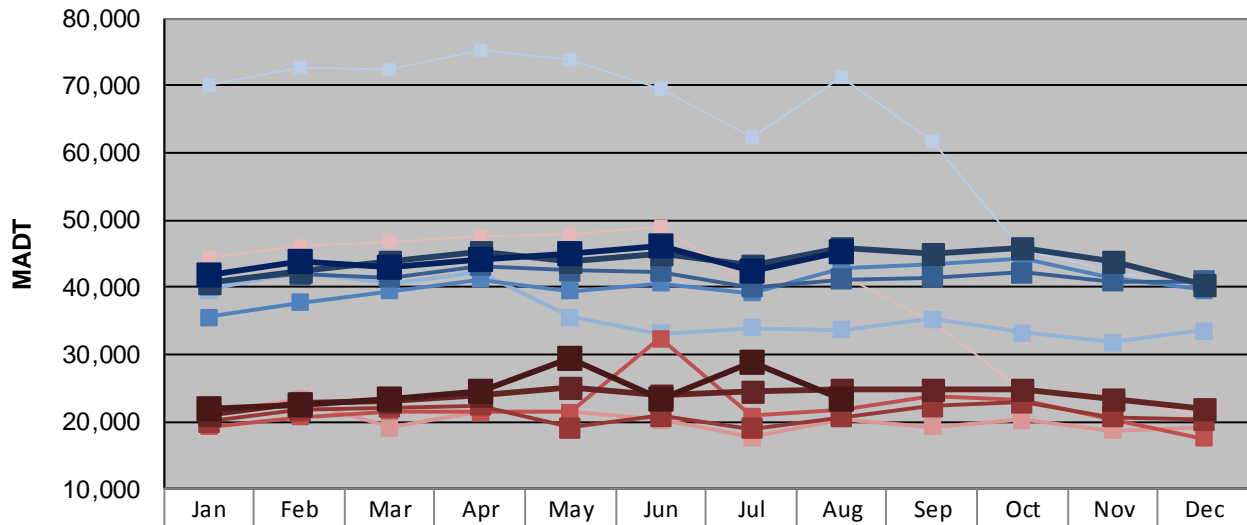
| | | |
|--|----------------------|-------------------------------------|
| Station Measurement: VOLUME | | |
| Route: TH 280 | Route Direction: N/S | Lanes: 4 |
| County: Ramsey | | Closest City: Lauderdale |
| Functional Class: Urban Principal Arterial - Other Freeways or Expressways | | |
| Location: N OF CSAH30 (LARPENTEUR AVE W) IN LAUDERDALE | | |
| Ref Post: 002+00.650 | True Mile: 2.65 | Sequence No. 9877 |
| Volume: 1,209,252 | | MADT: 39,008 |
| Weekday (M-F) MADT: 45,284 | | Weekend (Sa-Su) MADT: 23,334 |



Note: Increase in traffic January to August 2008 due to I-35W bridge collapse and detour ... Traffic returned to expected volume October 2008 due to reopening of I-35W bridge



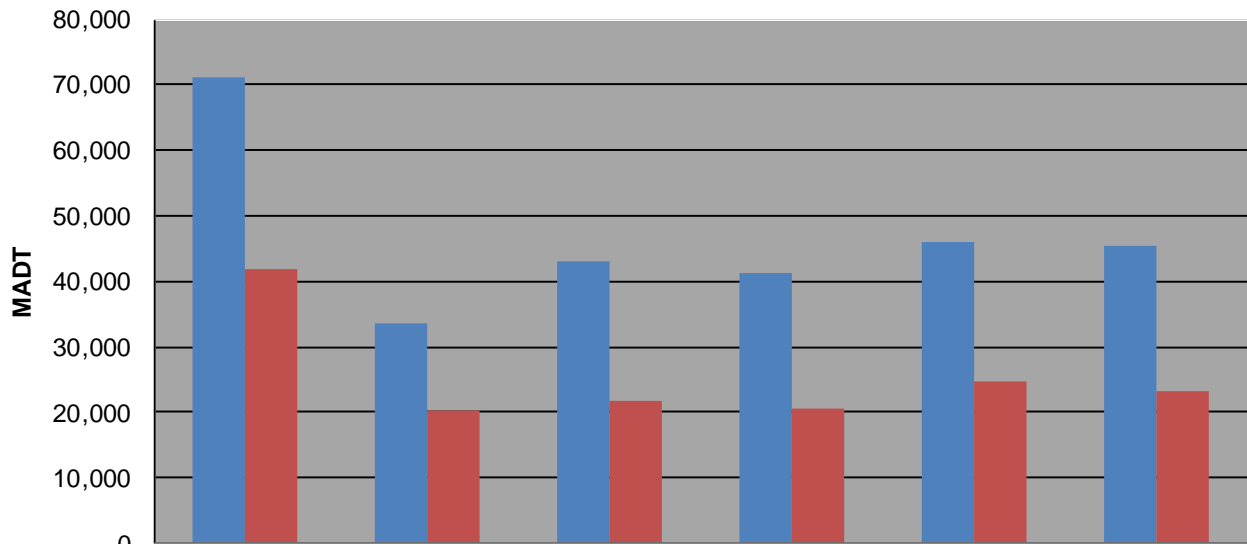
Weekday (WD)/Weekend (WE) Monthly Average Daily Traffic



| | Jan | Feb | Mar | Apr | May | Jun | Jul | Aug | Sep | Oct | Nov | Dec |
|--------|--------|--------|--------|--------|--------|--------|--------|--------|--------|--------|--------|--------|
| '08 WD | 69,966 | 72,664 | 72,332 | 75,232 | 73,744 | 69,436 | 62,330 | 71,150 | 61,640 | 45,540 | 42,496 | 39,418 |
| '08 WE | 44,284 | 46,058 | 46,678 | 47,462 | 47,830 | 48,936 | 40,338 | 41,824 | 34,888 | 24,698 | 23,746 | 20,668 |
| '09 WD | 39,628 | 42,126 | 40,480 | 42,102 | 35,572 | 33,058 | 33,970 | 33,718 | 35,282 | 33,268 | 31,794 | 33,474 |
| '09 WE | 21,354 | 23,280 | 19,144 | 21,594 | 21,422 | 20,222 | 17,632 | 20,338 | 19,176 | 20,194 | 18,668 | 19,232 |
| '10 WD | 35,528 | 37,650 | 39,374 | 41,194 | 39,374 | 40,636 | 39,142 | 42,916 | 43,512 | 44,322 | 41,238 | 39,622 |
| '10 WE | 19,212 | 20,744 | 21,468 | 21,456 | 21,376 | 32,414 | 20,810 | 21,772 | 23,700 | 23,294 | 20,434 | 17,458 |
| '11 WD | 40,794 | 41,840 | 41,410 | 43,210 | 42,452 | 42,330 | 39,968 | 41,126 | 41,468 | 42,214 | 40,818 | 40,862 |
| '11 WE | 19,904 | 21,668 | 22,134 | 22,422 | 19,158 | 20,878 | 18,984 | 20,616 | 22,266 | 22,790 | 20,724 | 20,300 |
| '12 WD | 40,612 | 42,396 | 43,964 | 45,184 | 43,896 | 44,960 | 43,240 | 45,950 | 44,832 | 45,878 | 43,874 | 40,458 |
| '12 WE | 20,954 | 22,658 | 23,188 | 23,878 | 24,994 | 23,952 | 24,630 | 24,784 | 24,704 | 24,700 | 23,350 | 21,874 |
| '13 WD | 41,728 | 43,884 | 43,030 | 44,150 | 45,010 | 46,250 | 42,504 | 45,284 | | | | |
| '13 WE | 21,782 | 22,342 | 23,376 | 24,352 | 29,514 | 23,348 | 28,948 | 23,334 | | | | |

Note: 'Weekday' defined as Monday-Friday, 'Weekend' defined as Saturday-Sunday

Weekday/Weekend Monthly Average Daily Traffic ('08-'13)



| | Aug-08 | Aug-09 | Aug-10 | Aug-11 | Aug-12 | Aug-13 |
|---------|--------|--------|--------|--------|--------|--------|
| Weekday | 71,150 | 33,718 | 42,916 | 41,126 | 45,950 | 45,284 |
| Weekend | 41,824 | 20,338 | 21,772 | 20,616 | 24,784 | 23,334 |