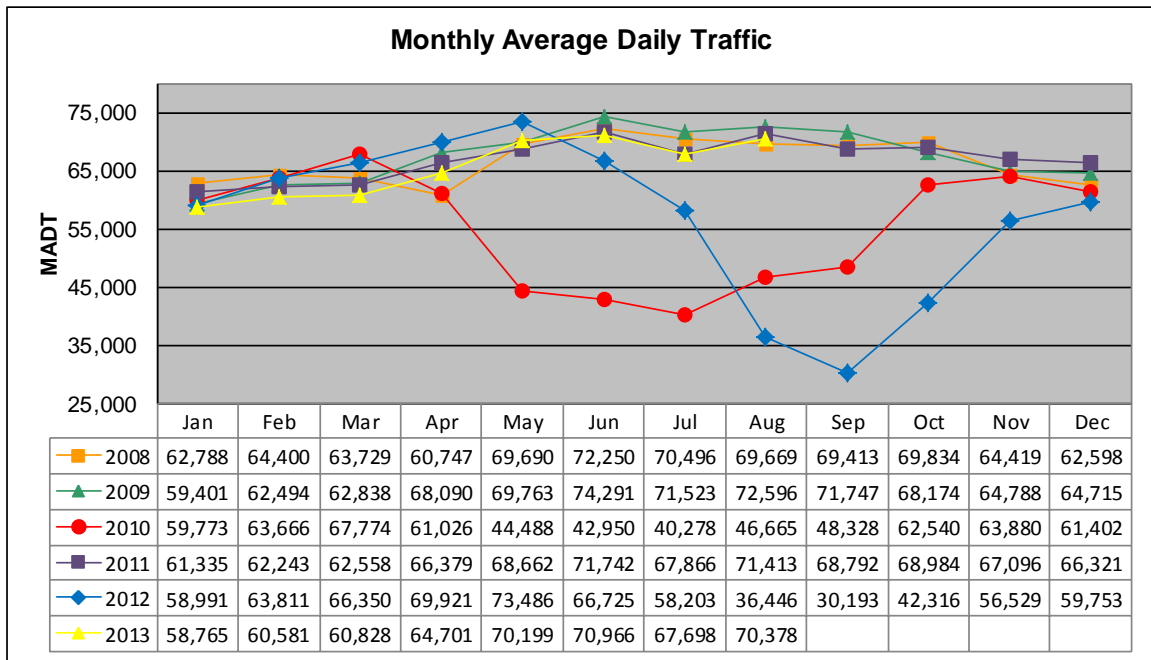


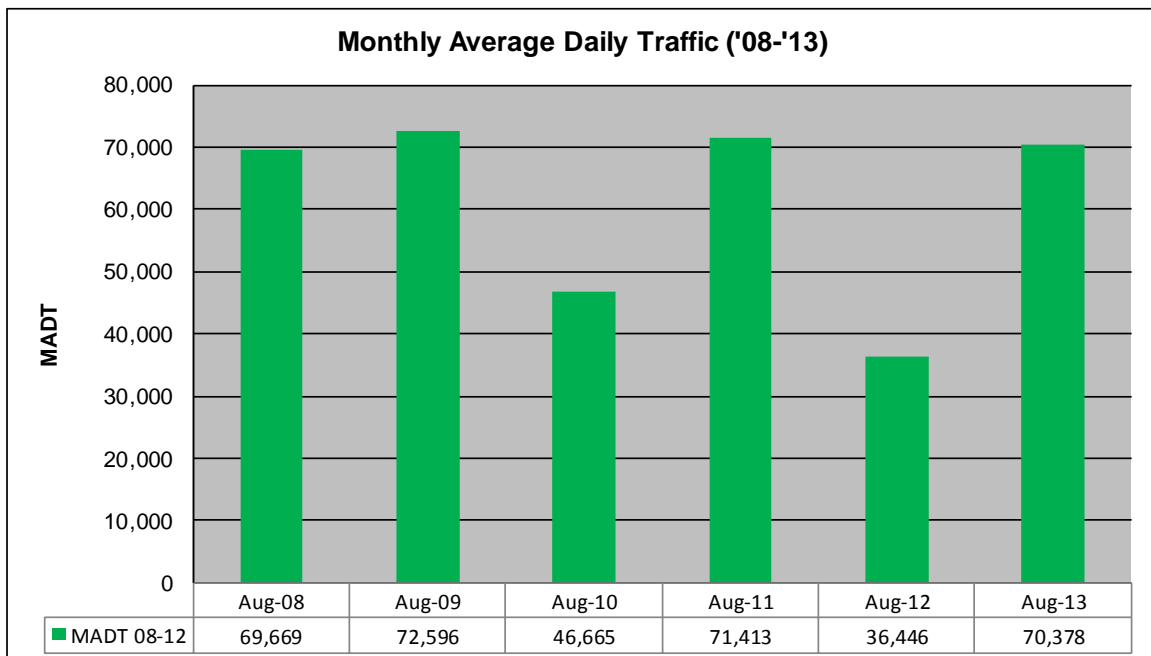
MONTHLY REPORT, STATION NO. 341 (ATR)

AUGUST 2013

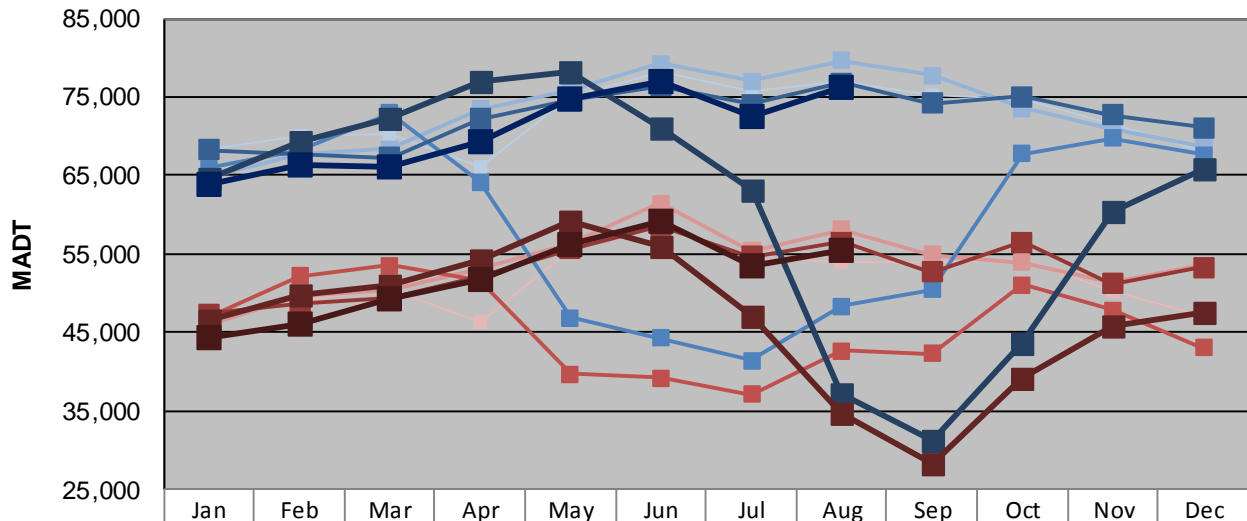
Station Measurement: VOLUME/SPEED/CLASS		
Route: I-694	Route Direction: N/S	Lanes: 4
County: Washington		Closest City: Oakdale
Functional Class: Urban Principal Arterial - Interstate		
Location: S OF CSAH35 (50TH ST N) IN OAKDALE		
Ref Post: 053+00.290	True Mile: 53.237	Sequence No. 9858
Volume: 2,181,711		MADT: 70,378
Weekday (M-F) MADT: 76,284		Weekend (Sa-Su) MADT: 55,562



Note: Decrease in traffic April 2008 due to construction on I-694 and I-35W... Decrease in traffic April to October 2010 and June to November 2012 due to construction on I-694



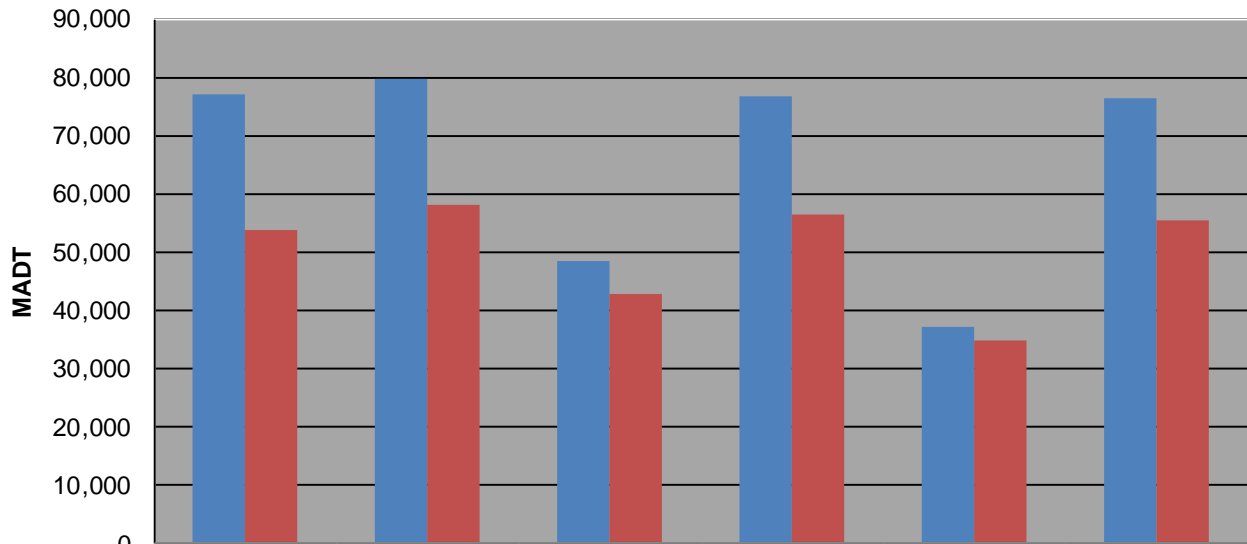
Weekday (WD)/Weekend (WE) Monthly Average Daily Traffic



	Jan	Feb	Mar	Apr	May	Jun	Jul	Aug	Sep	Oct	Nov	Dec
'08 WD	68,310	70,060	70,250	66,018	75,048	78,258	75,800	76,932	75,374	74,876	71,532	68,090
'08 WE	47,334	49,004	50,436	46,270	55,524	58,920	54,548	53,878	54,100	54,122	50,194	47,150
'09 WD	64,706	67,590	68,356	73,482	75,922	79,212	76,990	79,642	77,784	73,554	70,852	68,622
'09 WE	45,898	49,752	50,442	53,138	56,334	61,416	55,372	58,088	54,922	53,984	51,402	53,582
'10 WD	65,974	68,266	72,930	64,200	46,934	44,318	41,424	48,342	50,422	67,784	69,748	67,672
'10 WE	46,876	52,164	53,500	51,666	39,684	39,230	37,178	42,732	42,304	51,132	47,850	43,108
'11 WD	68,226	67,630	67,244	72,222	74,524	76,404	74,018	76,750	74,258	75,110	72,714	71,110
'11 WE	47,436	48,750	49,506	52,124	55,692	58,600	54,632	56,486	52,718	56,484	51,200	53,274
'12 WD	64,720	69,226	72,212	76,948	78,236	70,970	63,038	37,082	31,172	43,600	60,534	65,866
'12 WE	46,454	49,880	50,964	54,296	59,280	56,046	47,126	34,640	28,238	39,106	45,740	47,664
'13 WD	63,860	66,354	66,070	69,398	74,746	76,882	72,436	76,284				
'13 WE	44,382	46,146	49,352	51,722	56,156	59,138	53,582	55,562				

Note: 'Weekday' defined as Monday-Friday, 'Weekend' defined as Saturday-Sunday

Weekday/Weekend Monthly Average Daily Traffic ('08-'13)



	Aug-08	Aug-09	Aug-10	Aug-11	Aug-12	Aug-13
Weekday	76,932	79,642	48,342	76,750	37,082	76,284
Weekend	53,878	58,088	42,732	56,486	34,640	55,562