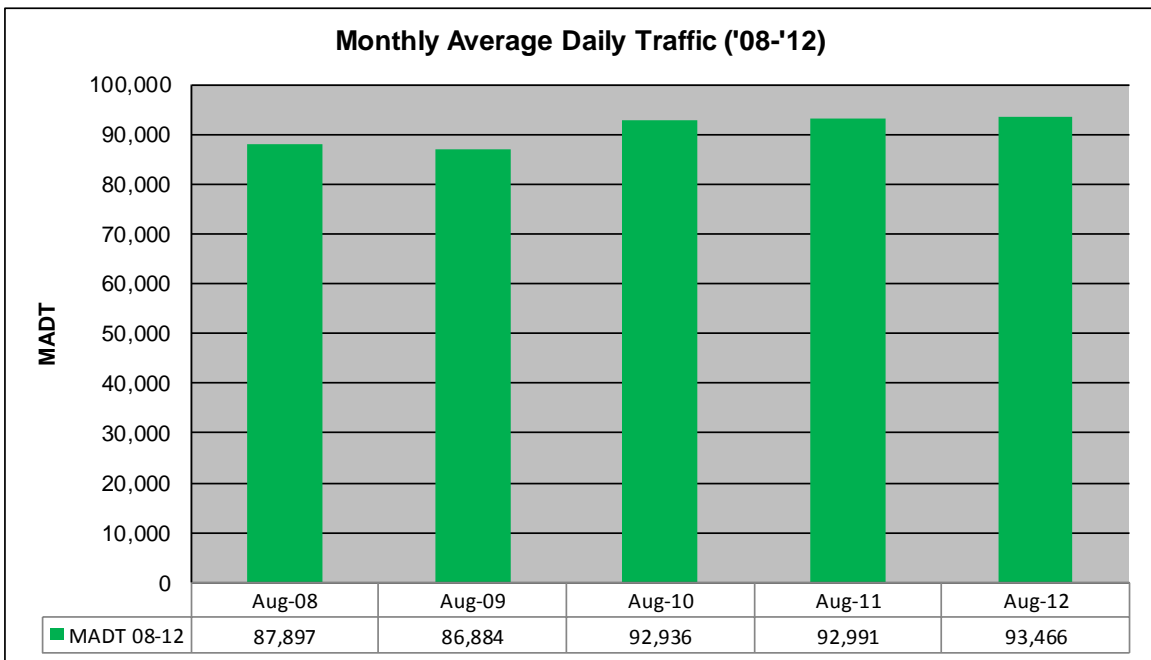
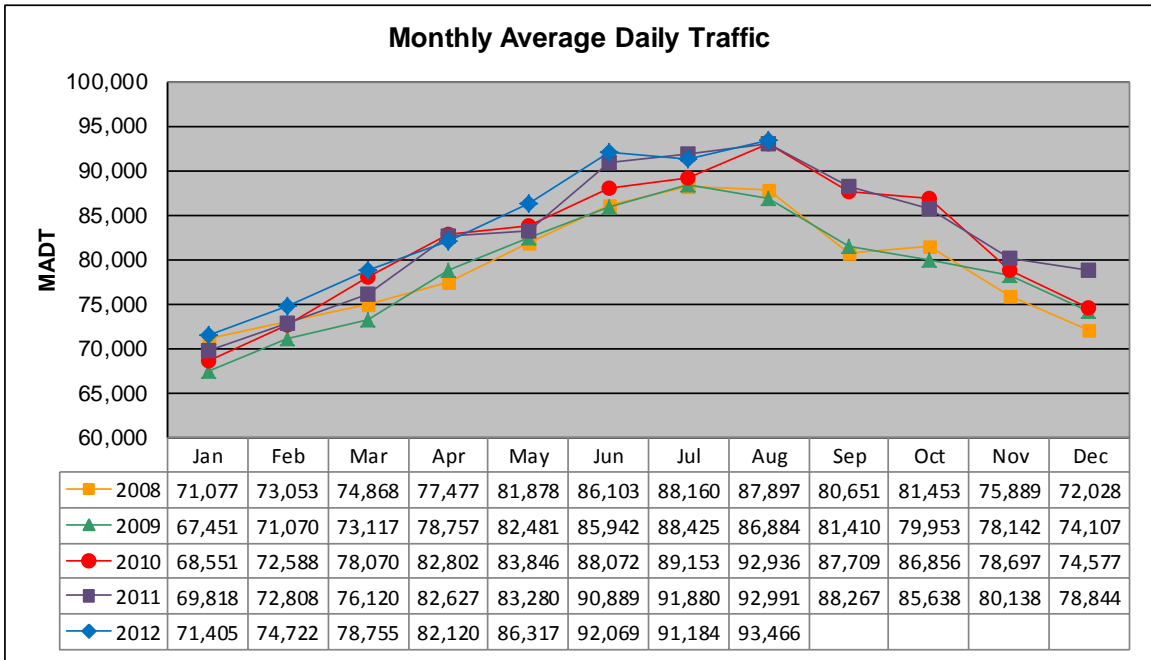


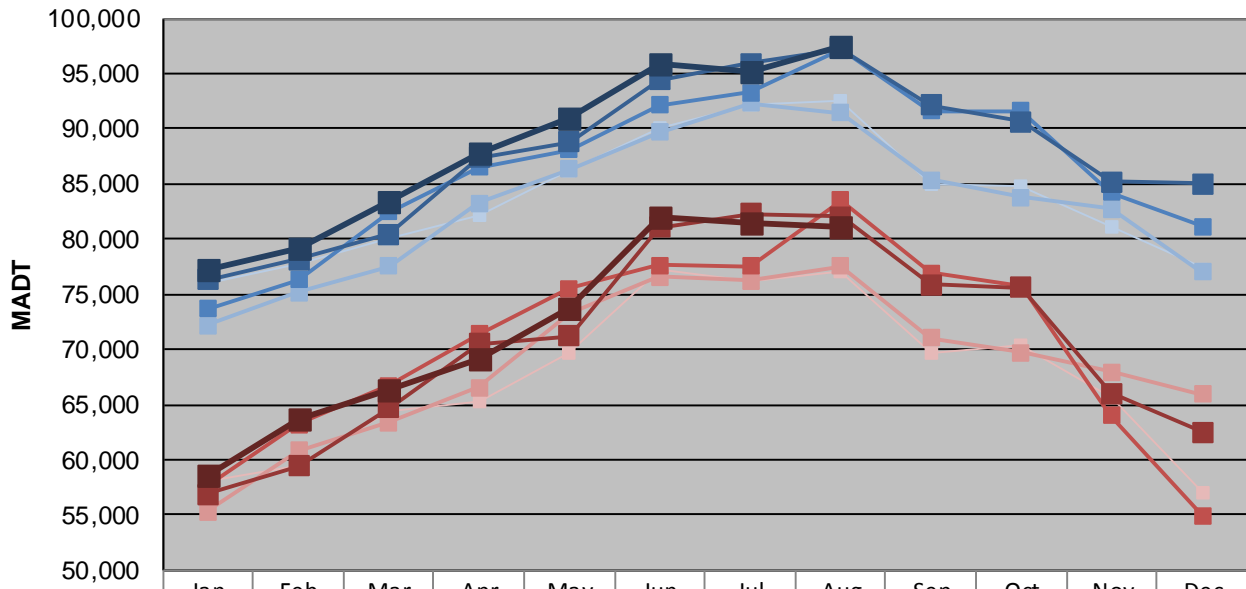
# MONTHLY REPORT, STATION NO. 354 (ATR)

## AUGUST 2012

|   |                      |                                     |
|---|----------------------|-------------------------------------|
| <b>Station Measurement: VOLUME</b>                      |                      |                                     |
| Route: I-94   | Route Direction: E/W | Lanes: 6                            |
| County: Washington                                      |                      | Closest City: Woodbury              |
| Functional Class: Urban Principal Arterial - Interstate |                      |                                     |
| Location: W OF MSAS127 (COTTAGE GROVE DR) IN WOODBURY   |                      |                                     |
| Ref Post: 252+00.500                                    | True Mile: 253.096   | Sequence No. 9861                   |
| <b>Volume: 2,897,457</b>                                |                      | <b>MADT: 93,466</b>                 |
| <b>Weekday (M-F) MADT: 95,182</b>                       |                      | <b>Weekend (Sa-Su) MADT: 81,484</b> |



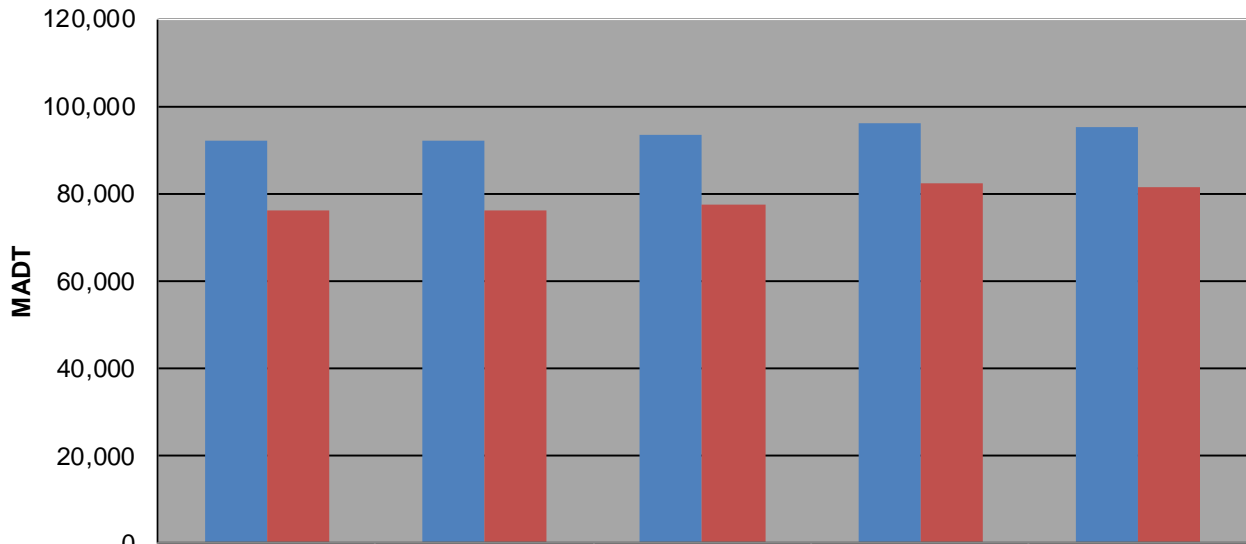
### Weekday (WD)/Weekend (WE) Monthly Average Daily Traffic



|        | Jan    | Feb    | Mar    | Apr    | May    | Jun    | Jul    | Aug    | Sep    | Oct    | Nov    | Dec    |
|--------|--------|--------|--------|--------|--------|--------|--------|--------|--------|--------|--------|--------|
| '08 WD | 75,922 | 77,760 | 80,088 | 82,106 | 86,270 | 90,082 | 92,238 | 92,594 | 85,060 | 84,870 | 81,062 | 77,334 |
| '08 WE | 58,018 | 59,502 | 64,394 | 65,304 | 69,672 | 77,234 | 76,238 | 77,050 | 69,724 | 70,402 | 65,544 | 57,066 |
| '09 WD | 72,186 | 75,154 | 77,554 | 83,288 | 86,342 | 89,720 | 92,278 | 91,452 | 85,404 | 83,748 | 82,766 | 77,000 |
| '09 WE | 55,292 | 60,860 | 63,374 | 66,566 | 73,286 | 76,558 | 76,222 | 77,552 | 71,064 | 69,716 | 67,928 | 65,892 |
| '10 WD | 73,630 | 76,338 | 82,478 | 86,492 | 88,134 | 92,122 | 93,266 | 97,130 | 91,636 | 91,594 | 84,242 | 81,188 |
| '10 WE | 57,646 | 63,218 | 66,716 | 71,382 | 75,500 | 77,602 | 77,566 | 83,524 | 76,940 | 75,690 | 64,020 | 54,954 |
| '11 WD | 76,276 | 78,154 | 80,408 | 87,378 | 88,804 | 94,438 | 95,910 | 97,284 | 92,118 | 90,670 | 85,182 | 85,008 |
| '11 WE | 56,844 | 59,416 | 64,668 | 70,464 | 71,172 | 81,102 | 82,308 | 82,006 | 75,894 | 75,608 | 66,038 | 62,464 |
| '12 WD | 77,226 | 79,142 | 83,328 | 87,846 | 90,914 | 95,812 | 95,182 | 97,380 |        |        |        |        |
| '12 WE | 58,538 | 63,762 | 66,240 | 69,226 | 73,726 | 82,062 | 81,484 | 81,182 |        |        |        |        |

Note: 'Weekday' defined as Monday-Friday, 'Weekend' defined as Saturday-Sunday

### Weekday/Weekend Monthly Average Daily Traffic ('08-'12)



|         | Aug-08 | Aug-09 | Aug-10 | Aug-11 | Aug-12 |
|---------|--------|--------|--------|--------|--------|
| Weekday | 92,238 | 92,278 | 93,266 | 95,910 | 95,182 |
| Weekend | 76,238 | 76,222 | 77,566 | 82,308 | 81,484 |