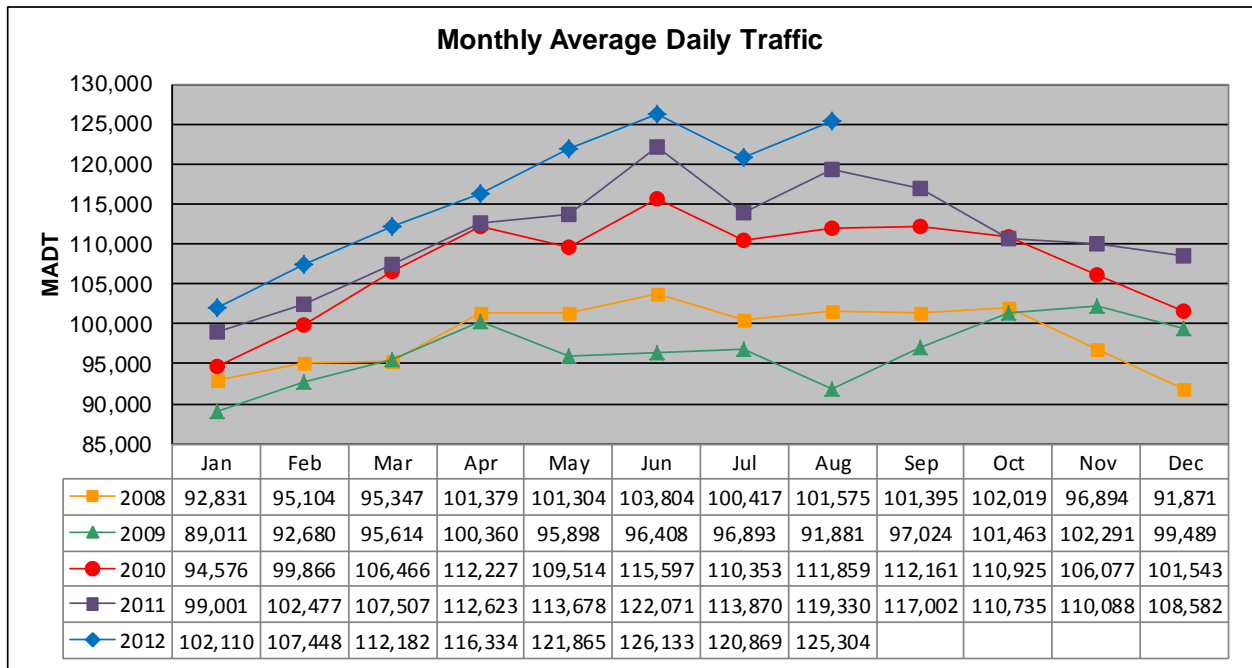


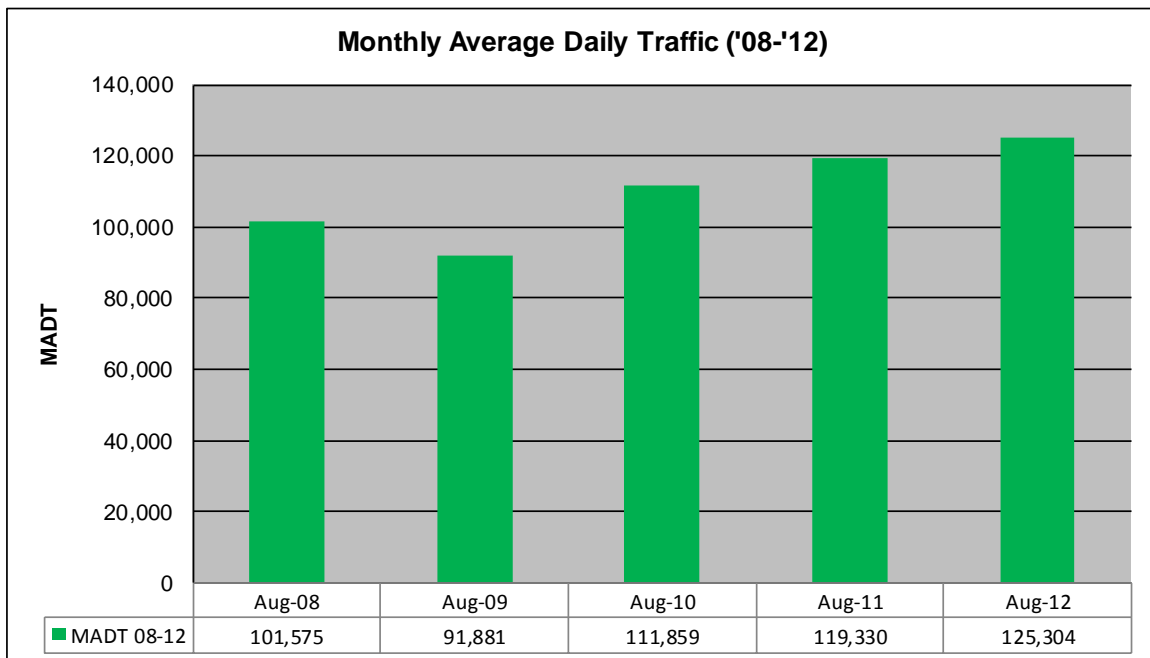
# MONTHLY REPORT, STATION NO. 315 (ATR)

## AUGUST 2012

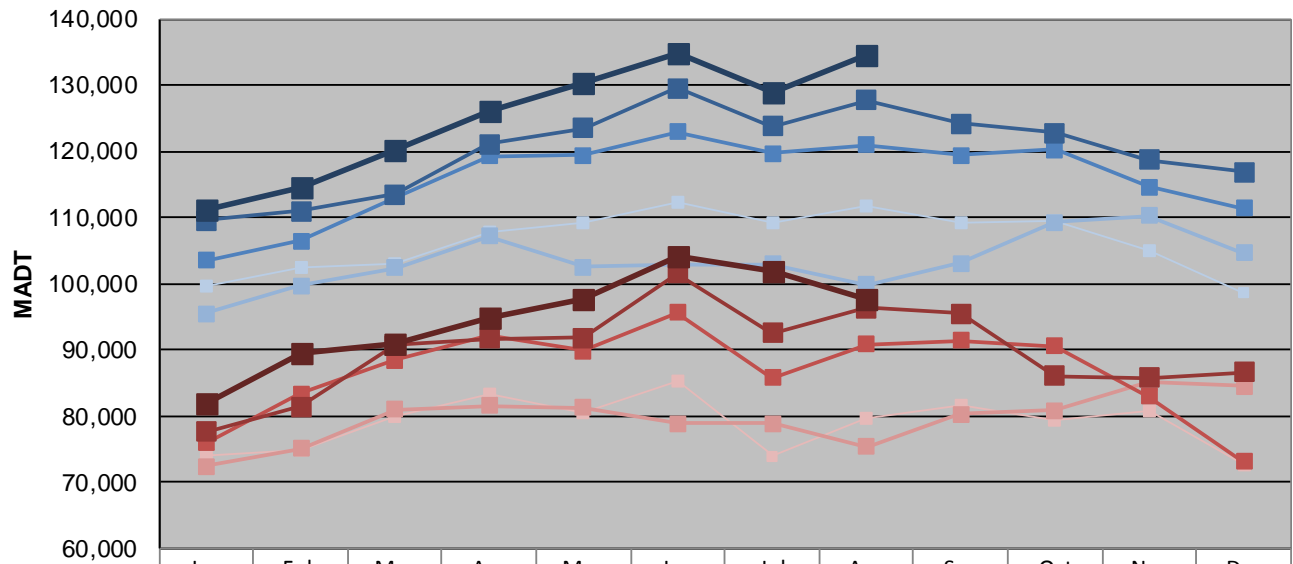
<b>Station Measurement: VOLUME</b>		
Route: I-35W	Route Direction: N/S	Lanes: 6
County: Hennepin		Closest City: Bloomington
Functional Class: Urban Principal Arterial - Interstate		
Location: N OF MN RIVER BRIDGE IN BLOOMINGTON		
Ref Post: 004+00.500	True Mile: 4.55	Sequence No. 9843
<b>Volume: 3,884,421</b>		<b>MADT: 125,304</b>
<b>Weekday (M-F) MADT: 128,810</b>		<b>Weekend (Sa-Su) MADT: 101,802</b>



Note: Decrease in traffic May to August 2009 due to construction on I-35W



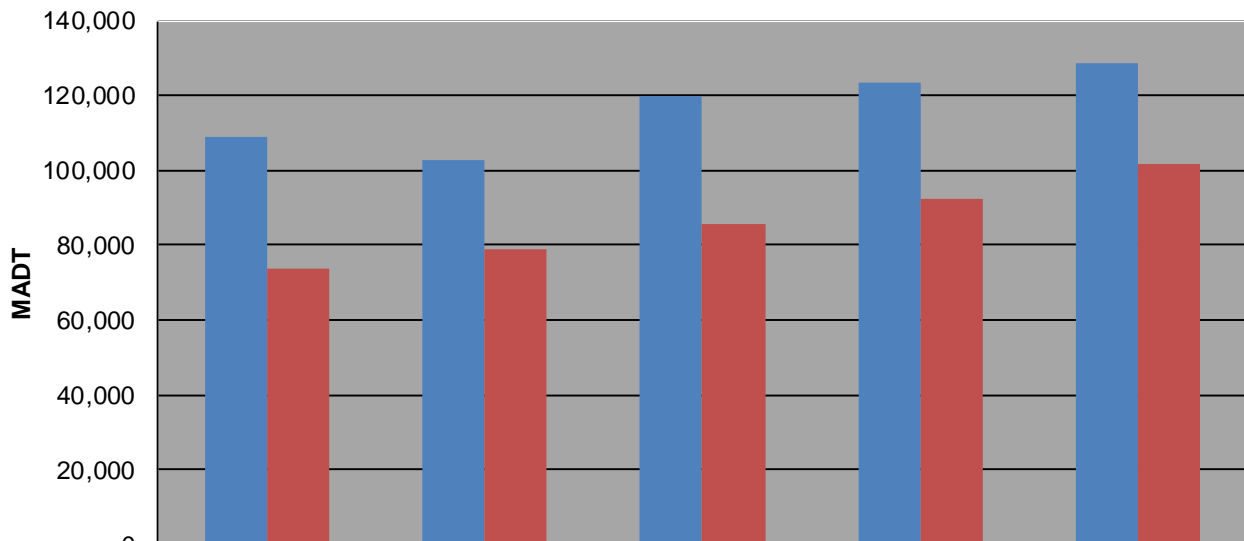
### Weekday (WD)/Weekend (WE) Monthly Average Daily Traffic



	Jan	Feb	Mar	Apr	May	Jun	Jul	Aug	Sep	Oct	Nov	Dec
'08 WD	99,552	102,488	103,056	107,868	109,176	112,192	109,210	111,864	109,182	109,492	105,014	98,614
'08 WE	74,048	74,822	79,864	83,422	80,436	85,278	73,942	79,616	81,550	79,454	80,654	72,714
'09 WD	95,418	99,748	102,414	107,178	102,488	102,964	102,964	99,850	103,118	109,238	110,228	104,644
'09 WE	72,390	75,010	81,048	81,512	81,318	78,912	78,912	75,312	80,248	80,834	85,096	84,508
'10 WD	103,556	106,480	113,056	119,210	119,410	122,926	119,624	121,010	119,460	120,228	114,604	111,318
'10 WE	75,854	83,336	88,476	92,062	89,838	95,628	85,830	90,874	91,420	90,622	82,914	73,084
'11 WD	109,596	110,914	113,540	121,030	123,434	129,472	123,728	127,650	124,220	122,732	118,674	116,900
'11 WE	77,608	81,360	90,632	91,696	91,868	101,462	92,470	96,312	95,542	86,052	85,794	86,552
'12 WD	111,306	114,452	120,104	126,114	130,234	134,840	128,810	134,654				
'12 WE	81,834	89,460	90,948	94,732	97,526	104,268	101,802	97,532				

Note: 'Weekday' defined as Monday-Friday, 'Weekend' defined as Saturday-Sunday

### Weekday/Weekend Monthly Average Daily Traffic ('08-'12)



	Aug-08	Aug-09	Aug-10	Aug-11	Aug-12
Weekday	109,210	102,964	119,624	123,728	128,810
Weekend	73,942	78,912	85,830	92,470	101,802