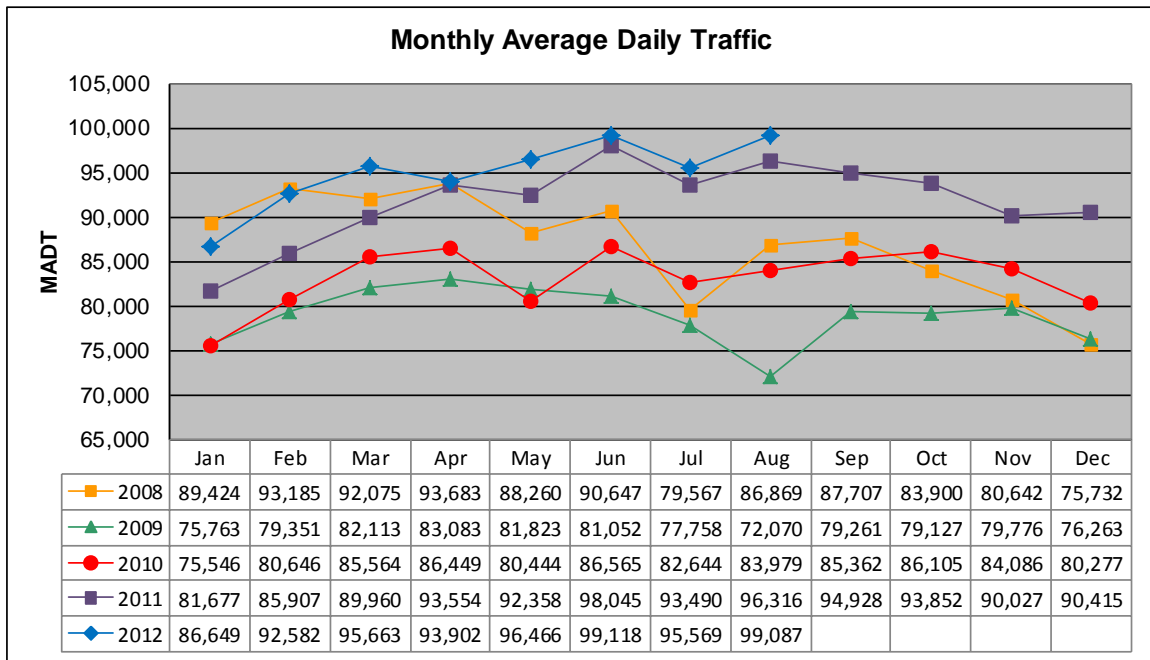


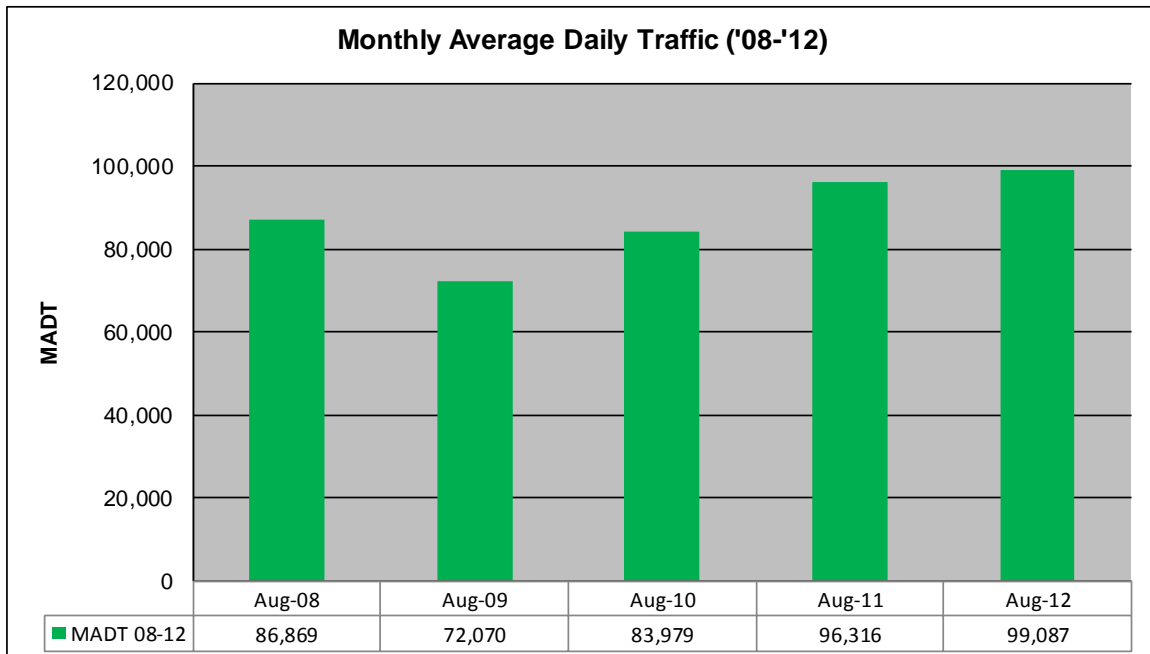
MONTHLY REPORT, STATION NO. 309 (ATR)

AUGUST 2012

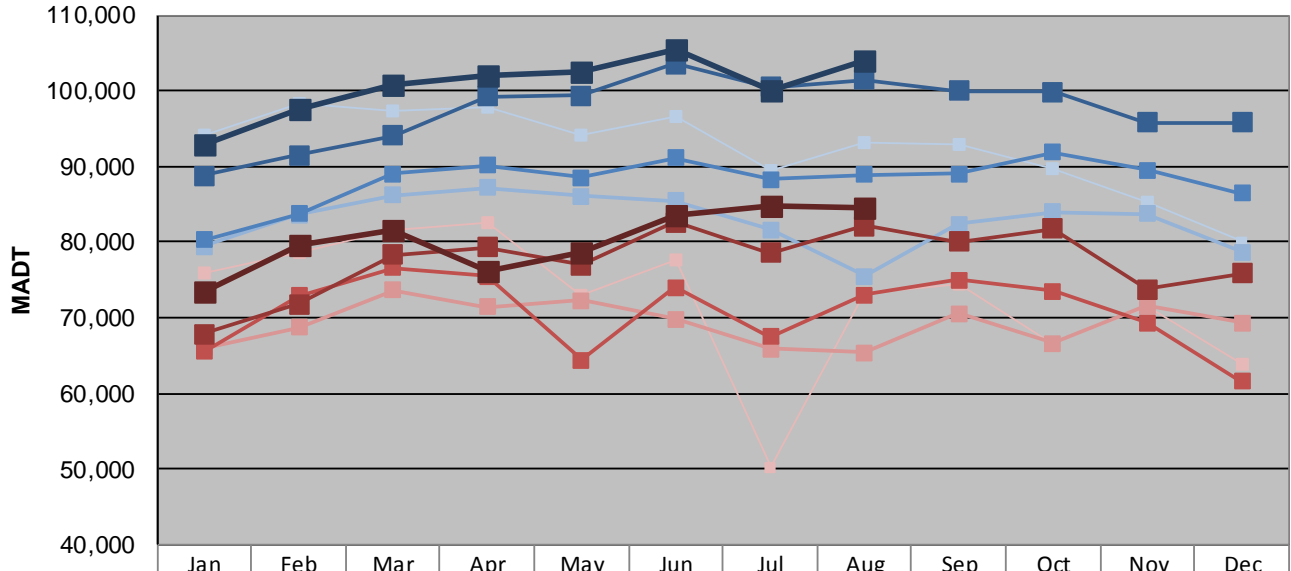
| | | |
|---|----------------------|-------------------------------------|
| Station Measurement: VOLUME | | |
| Route: TH 65 | Route Direction: N/S | Lanes: 6 |
| County: Hennepin | | Closest City: Minneapolis |
| Functional Class: Urban Minor Arterial | | |
| Location: S OF CSAH 5 (E FRANKLIN AVE) IN MINNEAPOLIS | | |
| Ref Post: 000+00.480 | True Mile: 0.48 | Sequence No. 9838 |
| Volume: 3,071,685 | | MADT: 99,087 |
| Weekday (M-F) MADT: 100,084 | | Weekend (Sa-Su) MADT: 84,858 |



Note: Decrease in traffic 2008-2009 due to I-35W bridge collapse and construction on TH 62... Although traffic increased from 2009 to 2010, volumes were lower than expected due to construction on I-35W and TH 62



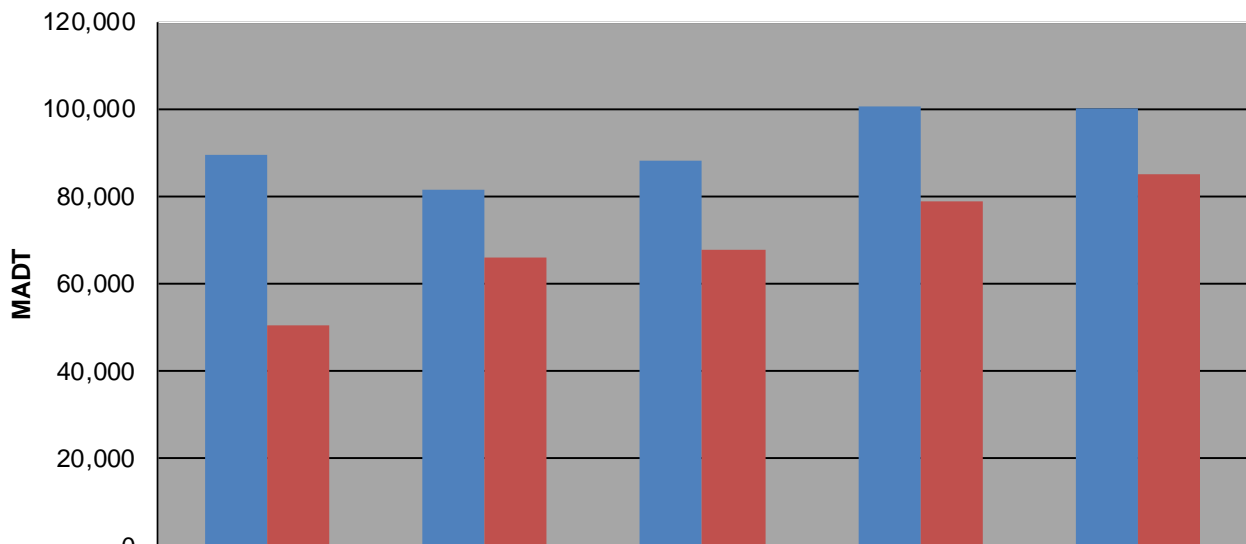
Weekday (WD)/Weekend (WE) Monthly Average Daily Traffic



| | Jan | Feb | Mar | Apr | May | Jun | Jul | Aug | Sep | Oct | Nov | Dec |
|--------|--------|--------|---------|---------|---------|---------|---------|---------|--------|--------|--------|--------|
| '08 WD | 94,200 | 98,442 | 97,426 | 97,708 | 94,042 | 96,600 | 89,430 | 93,254 | 92,888 | 89,642 | 85,186 | 79,996 |
| '08 WE | 75,852 | 78,592 | 81,484 | 82,492 | 72,906 | 77,680 | 50,226 | 73,234 | 74,512 | 66,652 | 71,554 | 63,858 |
| '09 WD | 79,420 | 83,626 | 86,228 | 87,228 | 86,088 | 85,440 | 81,630 | 75,536 | 82,372 | 83,980 | 83,704 | 78,646 |
| '09 WE | 65,954 | 68,666 | 73,630 | 71,472 | 72,318 | 69,802 | 65,898 | 65,344 | 70,520 | 66,558 | 71,590 | 69,296 |
| '10 WD | 80,314 | 83,736 | 88,986 | 90,184 | 88,512 | 91,110 | 88,276 | 88,858 | 88,964 | 91,878 | 89,498 | 86,498 |
| '10 WE | 65,512 | 72,922 | 76,566 | 75,508 | 64,334 | 74,030 | 67,466 | 73,024 | 75,024 | 73,546 | 69,320 | 61,546 |
| '11 WD | 88,724 | 91,542 | 94,104 | 99,192 | 99,328 | 103,524 | 100,430 | 101,516 | 99,974 | 99,858 | 95,792 | 95,786 |
| '11 WE | 67,784 | 71,794 | 78,362 | 79,268 | 76,928 | 82,578 | 78,590 | 82,114 | 80,026 | 81,762 | 73,722 | 75,806 |
| '12 WD | 92,882 | 97,624 | 100,822 | 102,040 | 102,392 | 105,360 | 100,084 | 103,934 | | | | |
| '12 WE | 73,406 | 79,596 | 81,592 | 76,054 | 78,704 | 83,610 | 84,858 | 84,582 | | | | |

Note: 'Weekday' defined as Monday-Friday, 'Weekend' defined as Saturday-Sunday

Weekday/Weekend Monthly Average Daily Traffic ('08-'12)



| | Aug-08 | Aug-09 | Aug-10 | Aug-11 | Aug-12 |
|---------|--------|--------|--------|---------|---------|
| Weekday | 89,430 | 81,630 | 88,276 | 100,430 | 100,084 |
| Weekend | 50,226 | 65,898 | 67,466 | 78,590 | 84,858 |