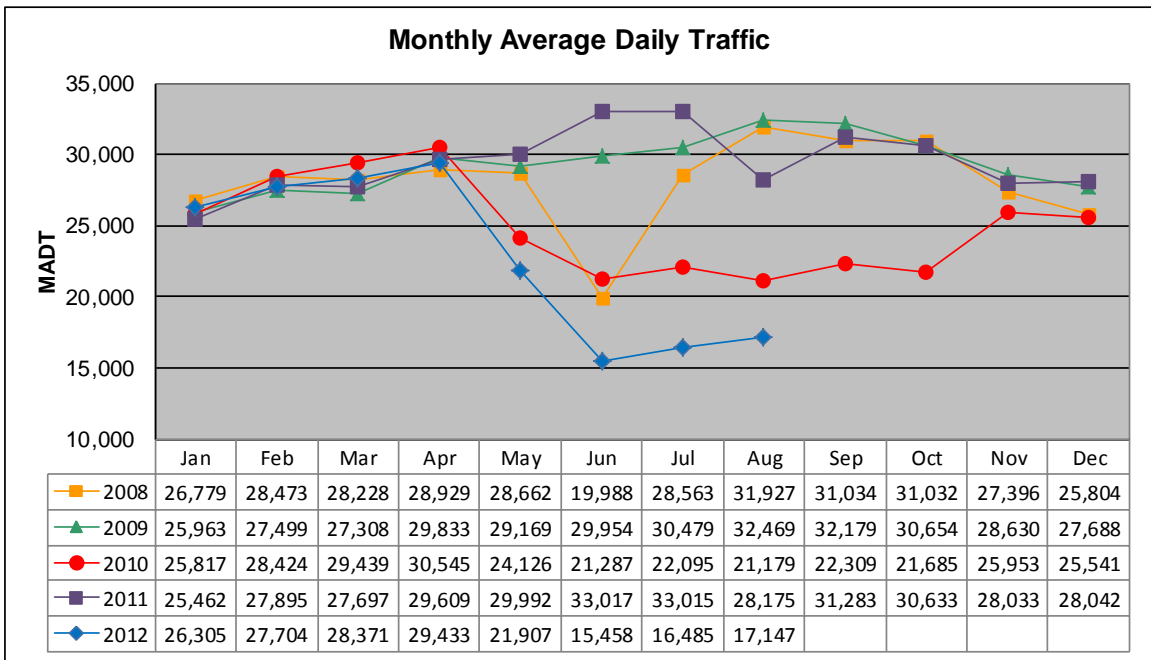


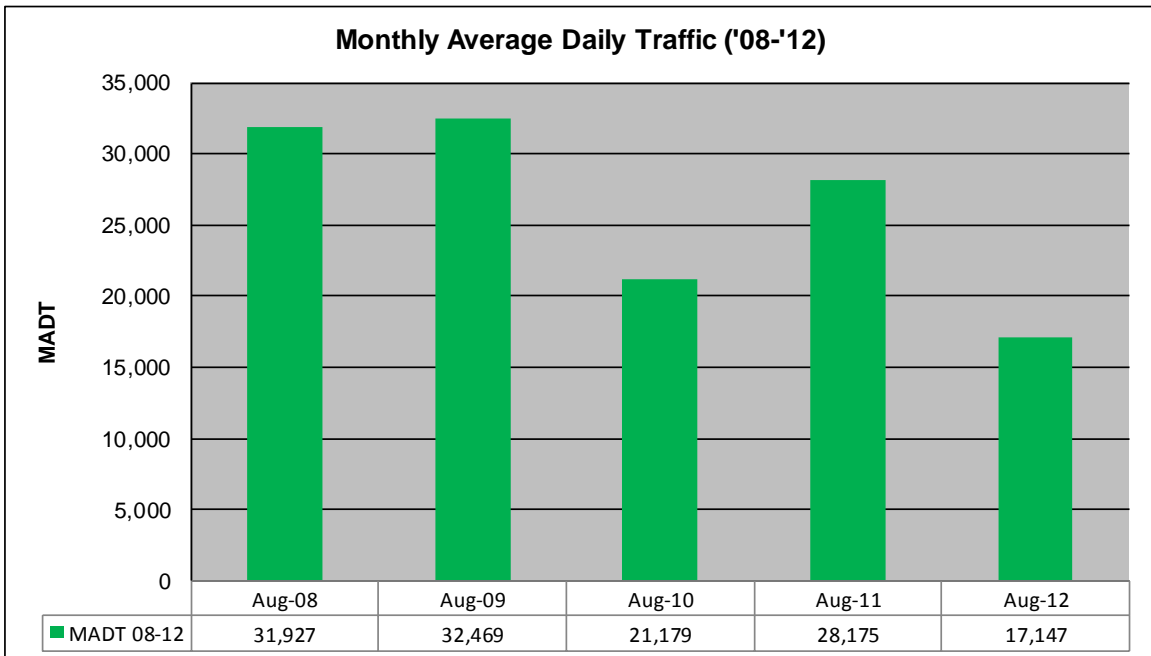
# MONTHLY REPORT, STATION NO. 101 (ATR)

## AUGUST 2012

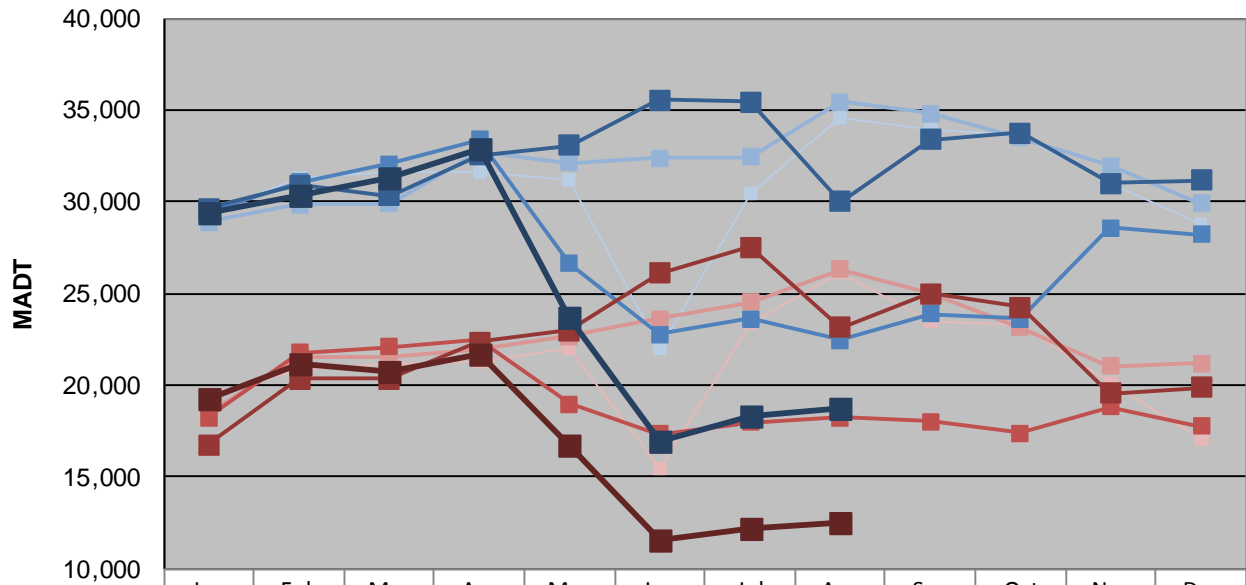
Station Measurement: VOLUME/SPEED/CLASS		
Route: I-535	Route Direction: N/S	Lanes: 4
County: St Louis	Closest City: Duluth	
Functional Class: Urban Principal Arterial - Interstate		
Location: SW OF MSAS149 (GARFIELD AVE) IN DULUTH		
Ref Post: 000+00.900	True Mile: 0.8	Sequence No. 9823
<b>Volume: 531,555</b>		<b>MADT: 17,147</b>
<b>Weekday (M-F) MADT: 18,274</b>		<b>Weekend (Sa-Su) MADT: 12,244</b>



Note: Decrease in traffic June/July 2008 and May to August 2012 due to bridge work... Decrease in traffic May to October 2010 and August 2011 due to construction on I-35



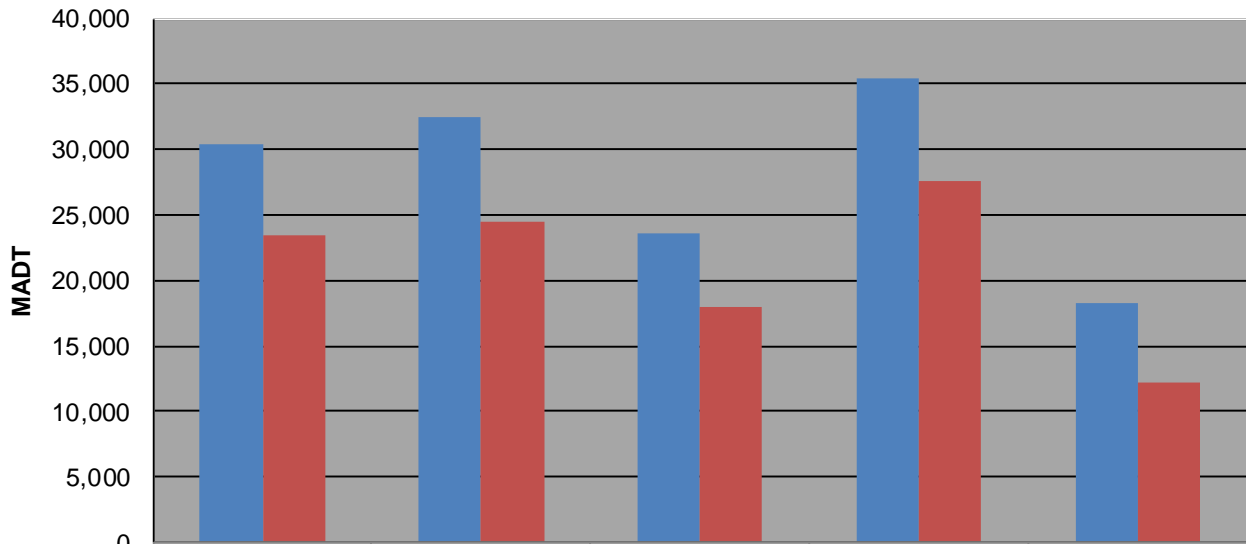
**Weekday (WD)/Weekend (WE) Monthly Average Daily Traffic**



	Jan	Feb	Mar	Apr	May	Jun	Jul	Aug	Sep	Oct	Nov	Dec
'08 WD	29,424	31,264	31,628	31,612	31,146	21,978	30,416	34,542	33,956	33,590	31,022	28,818
'08 WE	19,484	20,822	21,190	21,318	21,966	15,492	23,392	26,150	23,482	23,292	20,144	17,018
'09 WD	28,912	29,870	29,906	32,694	32,130	32,376	32,428	35,452	34,826	33,514	31,976	29,894
'09 WE	18,466	21,574	21,564	21,980	22,668	23,622	24,518	26,314	24,984	23,134	21,056	21,218
'10 WD	29,446	31,086	32,066	33,370	26,616	22,780	23,610	22,480	23,868	23,632	28,600	28,236
'10 WE	18,220	21,768	22,066	22,486	18,998	17,328	18,000	18,240	18,002	17,388	18,826	17,758
'11 WD	29,624	30,908	30,300	32,540	33,082	35,532	35,460	29,996	33,378	33,740	31,034	31,172
'11 WE	16,786	20,336	20,374	22,378	23,012	26,096	27,534	23,134	25,010	24,254	19,572	19,866
'12 WD	29,374	30,388	31,334	32,922	23,698	16,972	18,274	18,728				
'12 WE	19,280	21,126	20,760	21,666	16,692	11,574	12,244	12,466				

Note: 'Weekday' defined as Monday-Friday, 'Weekend' defined as Saturday-Sunday

**Weekday/Weekend Monthly Average Daily Traffic ('08-'12)**



	Aug-08	Aug-09	Aug-10	Aug-11	Aug-12
Weekday	30,416	32,428	23,610	35,460	18,274
Weekend	23,392	24,518	18,000	27,534	12,244