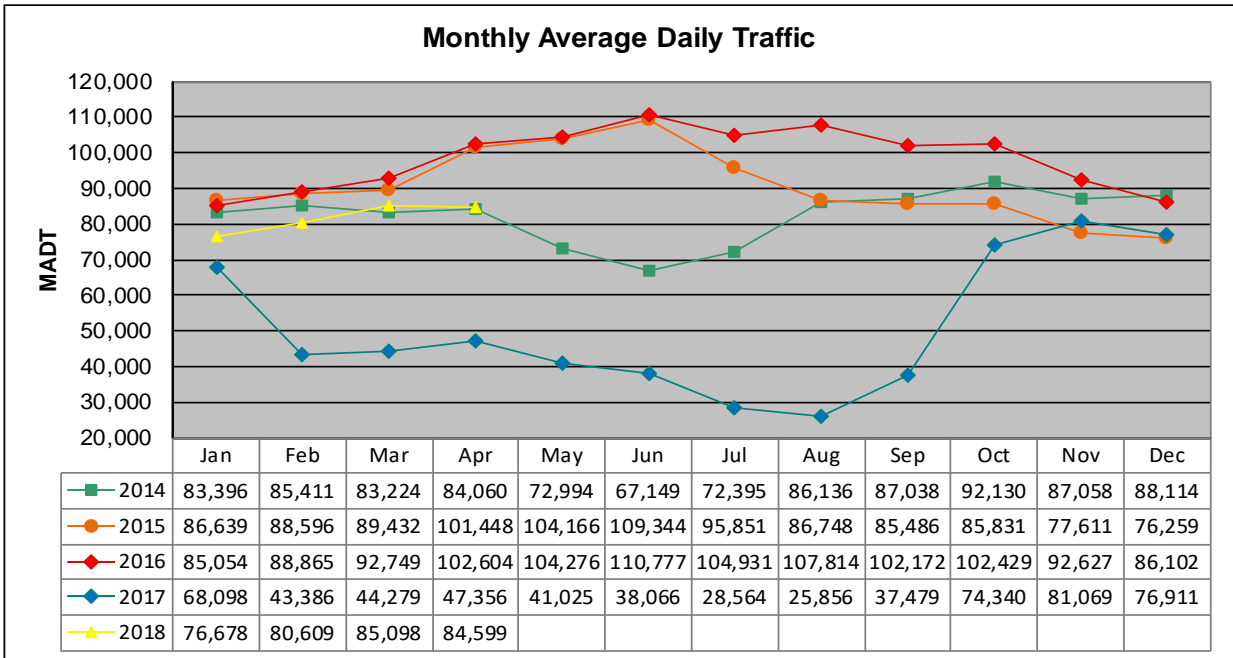


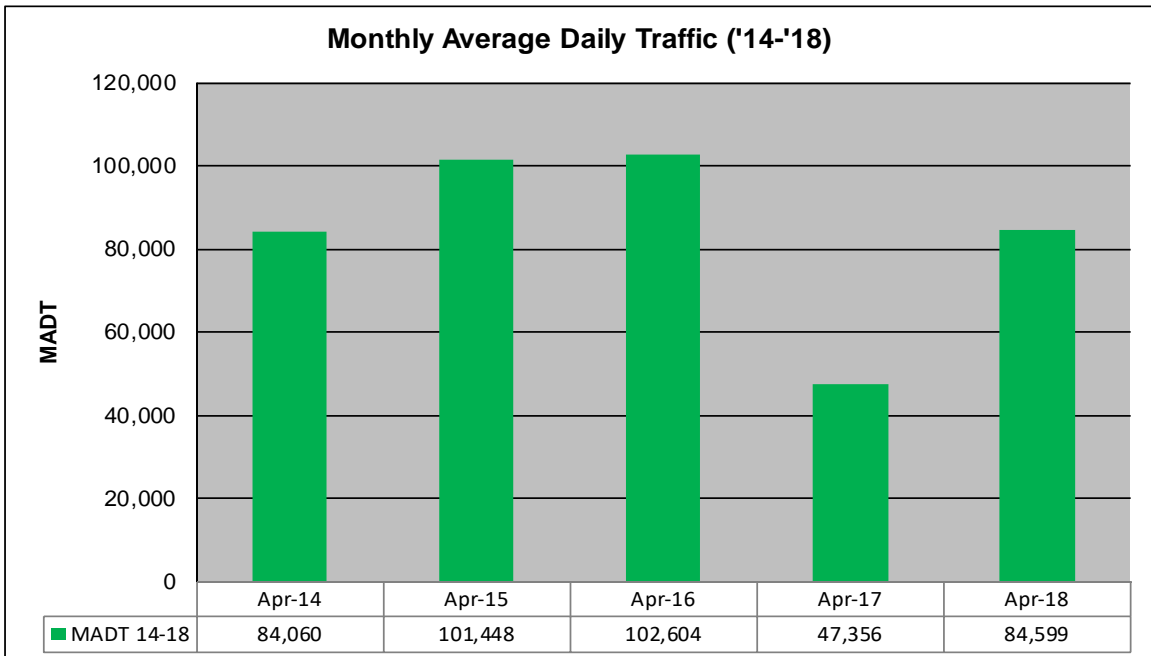
MONTHLY REPORT, STATION NO. 405 (ATR)

APRIL 2018

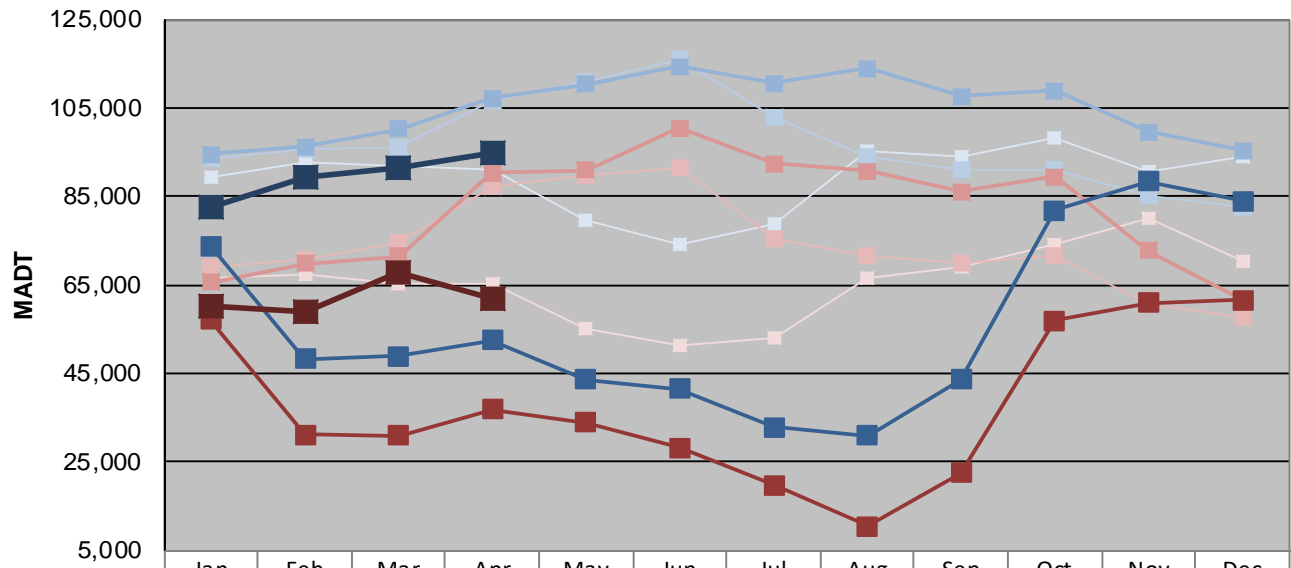
Station Measurement: VOLUME		
Route: TH 169	Route Direction: N/S	Lanes: 4
County: Hennepin		Closest City: St Louis Park
Functional Class: Urban Principal Arterial - Other Freeways or Expressways		
Location: N OF MSAS296 (CEDAR LAKE RD) IN ST LOUIS PARK		
Ref Post: 128+00.870	True Mile: 126.71	Sequence No. 9883
Volume: 2,537,981		MADT: 84,599
Weekday (M-F) MADT: 94,846		Weekend (Sa-Su) MADT: 62,118



Note: Decrease in traffic May to July 2014, December 2015, and January to November 2017 due to construction on TH 169... Increase in traffic April to July 2015 and June to October 2016 due to detour from TH 100



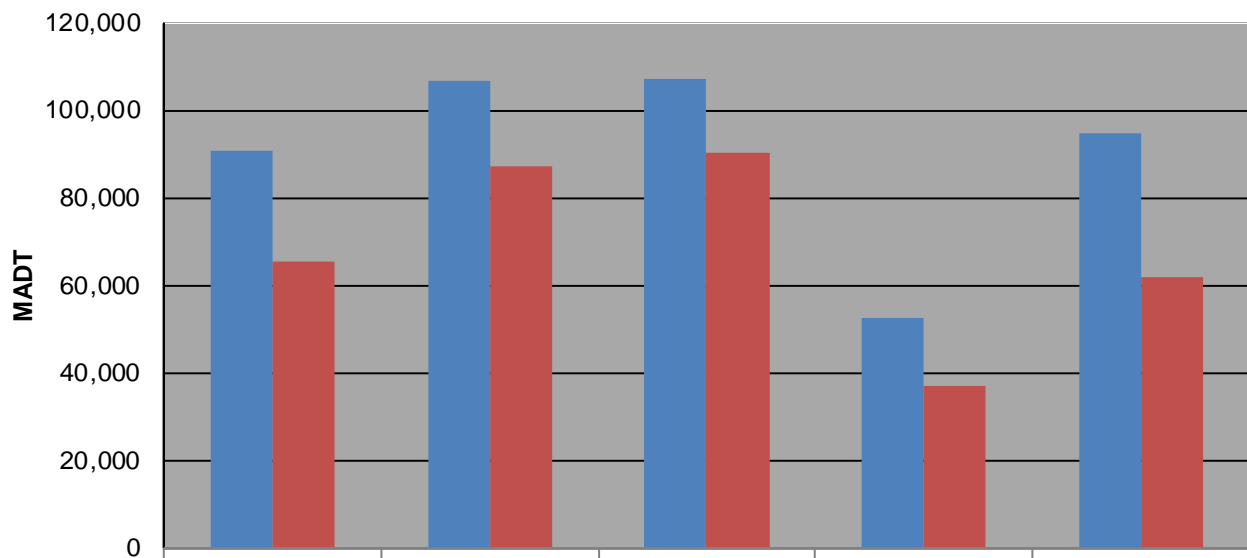
Weekday (WD)/Weekend (WE) Monthly Average Daily Traffic



	Jan	Feb	Mar	Apr	May	Jun	Jul	Aug	Sep	Oct	Nov	Dec
'14 WD	89,146	92,618	92,010	90,872	79,712	74,122	78,754	95,444	93,860	98,234	90,472	94,126
'14 WE	66,634	67,396	65,258	65,418	55,340	51,354	53,202	66,702	69,192	74,266	80,232	70,394
'15 WD	93,690	95,796	96,240	106,676	110,710	115,996	102,972	94,048	91,062	91,164	85,098	82,608
'15 WE	69,256	70,598	74,480	87,124	89,608	91,604	75,216	71,574	69,916	71,792	60,778	57,710
'16 WD	94,498	96,204	100,150	107,248	110,370	114,386	110,626	113,858	107,692	108,798	99,636	95,448
'16 WE	65,538	69,816	71,462	90,258	90,998	100,518	92,494	90,690	86,018	89,518	72,858	61,730
'17 WD	73,794	48,290	48,850	52,562	43,636	41,578	32,830	31,080	43,562	81,784	88,344	83,924
'17 WE	57,142	31,128	30,916	36,948	33,996	28,326	19,702	10,496	22,498	56,998	61,008	61,560
'18 WD	82,696	89,186	91,322	94,846								
'18 WE	60,362	59,166	68,018	62,118								

Note: 'Weekday' defined as Monday-Friday, 'Weekend' defined as Saturday-Sunday

Weekday/Weekend Monthly Average Daily Traffic ('14-'18)



	Apr-14	Apr-15	Apr-16	Apr-17	Apr-18
Weekday	90,872	106,676	107,248	52,562	94,846
Weekend	65,418	87,124	90,258	36,948	62,118