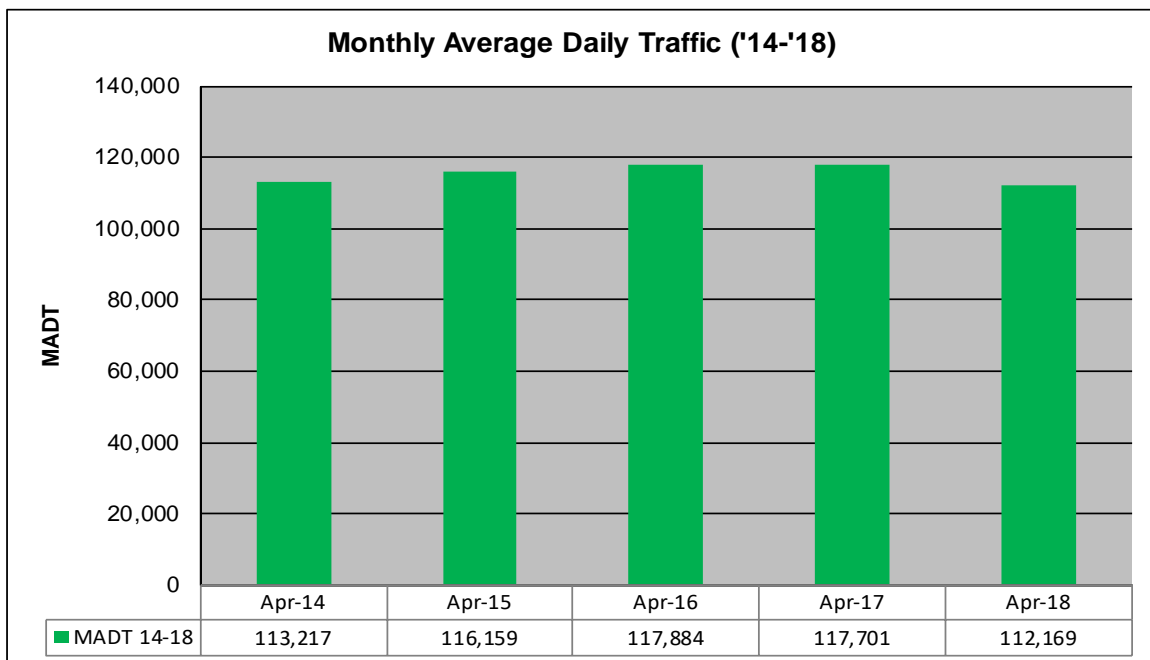
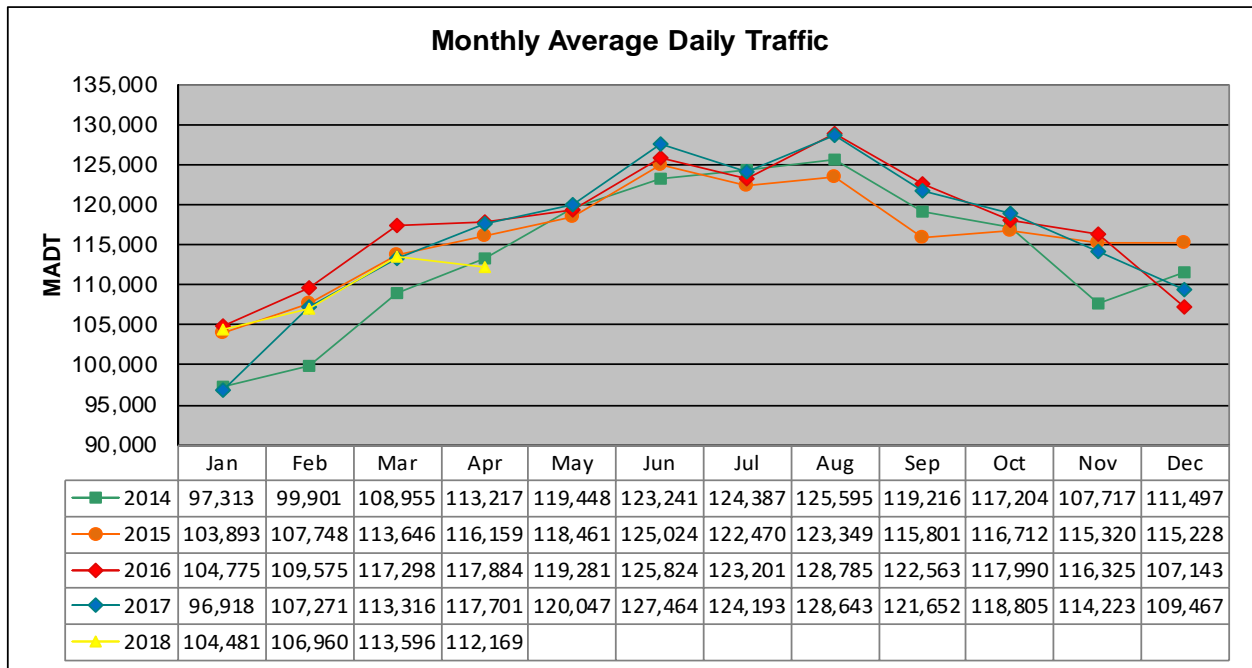


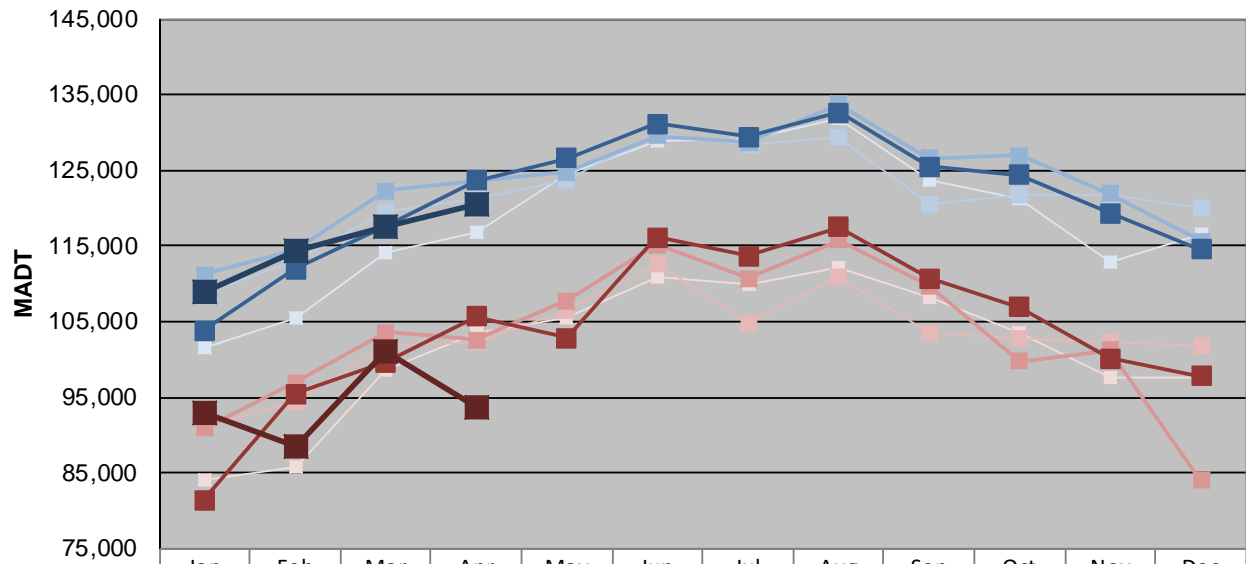
MONTHLY REPORT, STATION NO. 342 (ATR)

APRIL 2018

Station Measurement: VOLUME		
Route: I-94	Route Direction: E/W	Lanes: 6
County: Hennepin		Closest City: Maple Grove
Functional Class: Urban Principal Arterial - Interstate		
Location: S OF CR30 (93RD AVE N) IN MAPLE GROVE		
Ref Post: 214+00.030	True Mile: 214.71	Sequence No. 9859
Volume: 3,365,080		MADT: 112,169
Weekday (M-F) MADT: 120,618		Weekend (Sa-Su) MADT: 93,584



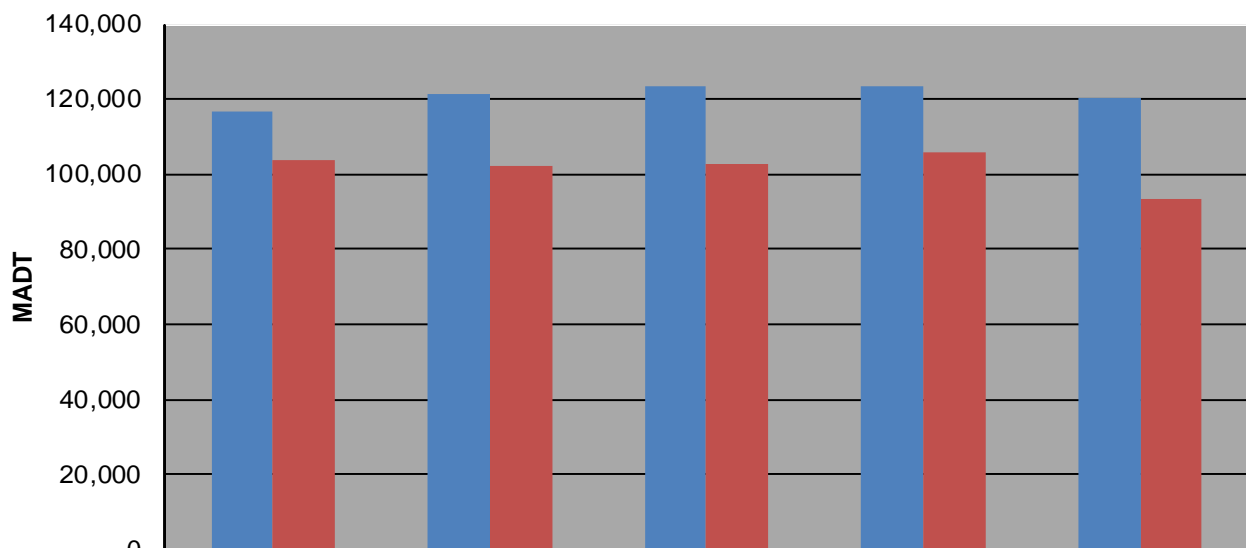
Weekday (WD)/Weekend (WE) Monthly Average Daily Traffic



	Jan	Feb	Mar	Apr	May	Jun	Jul	Aug	Sep	Oct	Nov	Dec
'14 WD	101,440	105,510	114,144	116,940	124,348	128,946	129,138	131,802	123,736	121,328	112,826	116,466
'14 WE	83,944	85,880	98,646	103,590	105,546	110,892	109,986	112,100	108,132	103,542	97,498	97,546
'15 WD	108,592	113,126	119,502	121,188	123,708	129,818	128,468	129,376	120,402	121,760	121,692	119,998
'15 WE	91,256	94,302	101,836	102,320	106,468	112,598	104,724	111,018	103,526	102,704	102,238	101,758
'16 WD	111,252	114,462	122,316	123,604	124,720	129,620	128,694	133,716	126,568	126,986	121,914	115,610
'16 WE	90,910	96,930	103,602	102,624	107,718	115,142	110,764	115,808	109,692	99,796	101,274	84,056
'17 WD	103,842	111,982	117,640	123,688	126,584	131,174	129,428	132,688	125,538	124,386	119,354	114,516
'17 WE	81,456	95,492	99,582	105,726	102,904	116,124	113,648	117,450	110,708	106,870	100,098	97,796
'18 WD	109,058	114,346	117,660	120,618								
'18 WE	92,886	88,492	100,944	93,584								

Note: 'Weekday' defined as Monday-Friday, 'Weekend' defined as Saturday-Sunday

Weekday/Weekend Monthly Average Daily Traffic ('14-'18)



	Apr-14	Apr-15	Apr-16	Apr-17	Apr-18
Weekday	116,940	121,188	123,604	123,688	120,618
Weekend	103,590	102,320	102,624	105,726	93,584