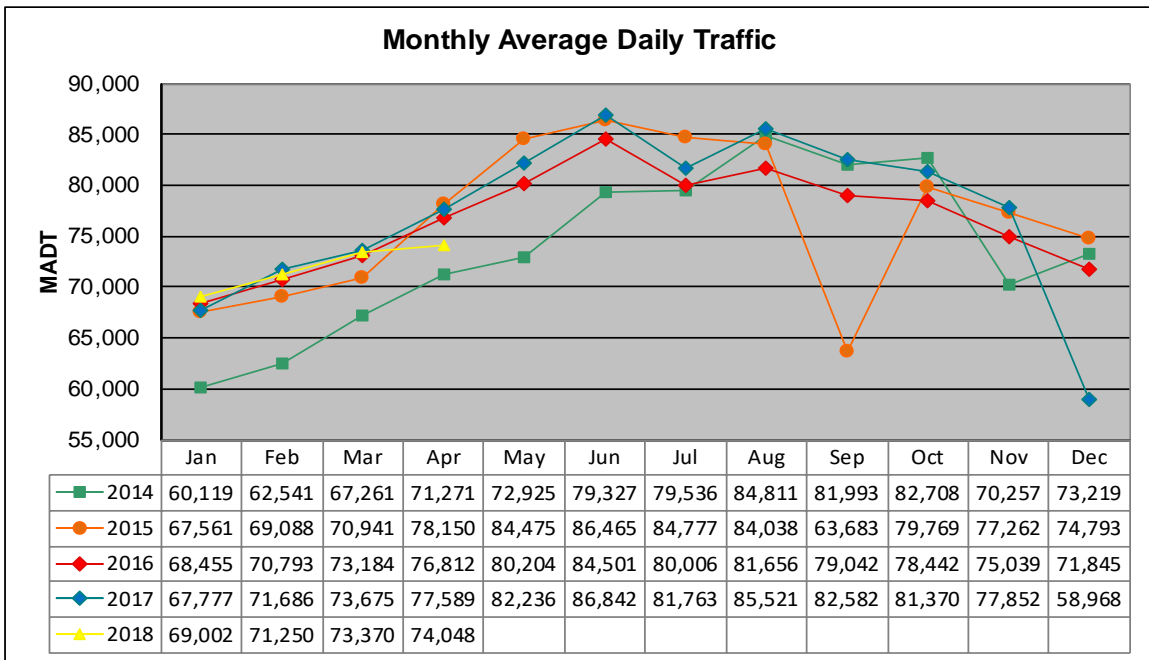


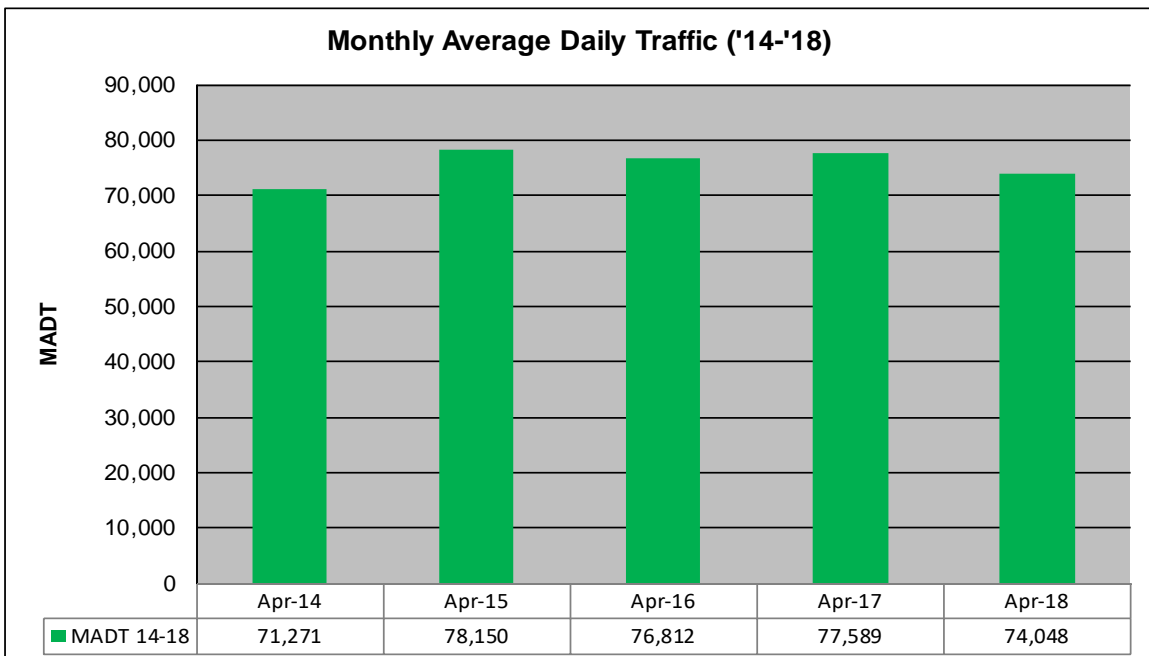
MONTHLY REPORT, STATION NO. 341 (ATR)

APRIL 2018

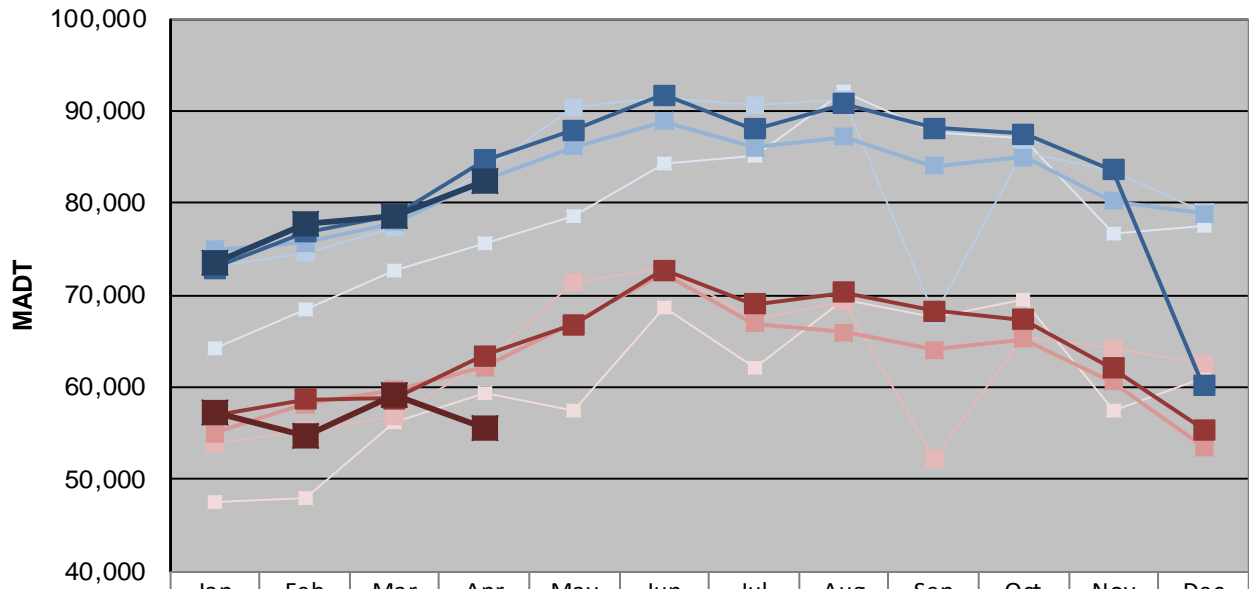
Station Measurement: VOLUME/SPEED/CLASS		
Route: I-694	Route Direction: N/S	Lanes: 4
County: Washington		Closest City: Oakdale
Functional Class: Urban Principal Arterial - Interstate		
Location: S OF CSAH35 (50TH ST N) IN OAKDALE		
Ref Post: 053+00.290	True Mile: 53.237	Sequence No. 9858
Volume: 2,221,427		MADT: 74,048
Weekday (M-F) MADT: 82,304		Weekend (Sa-Su) MADT: 55,636



Note: Increase in traffic June to October 2014, and May/July/August/October 2015 due to detour from TH 36... Decrease in traffic December 2017 due to construction on I-694



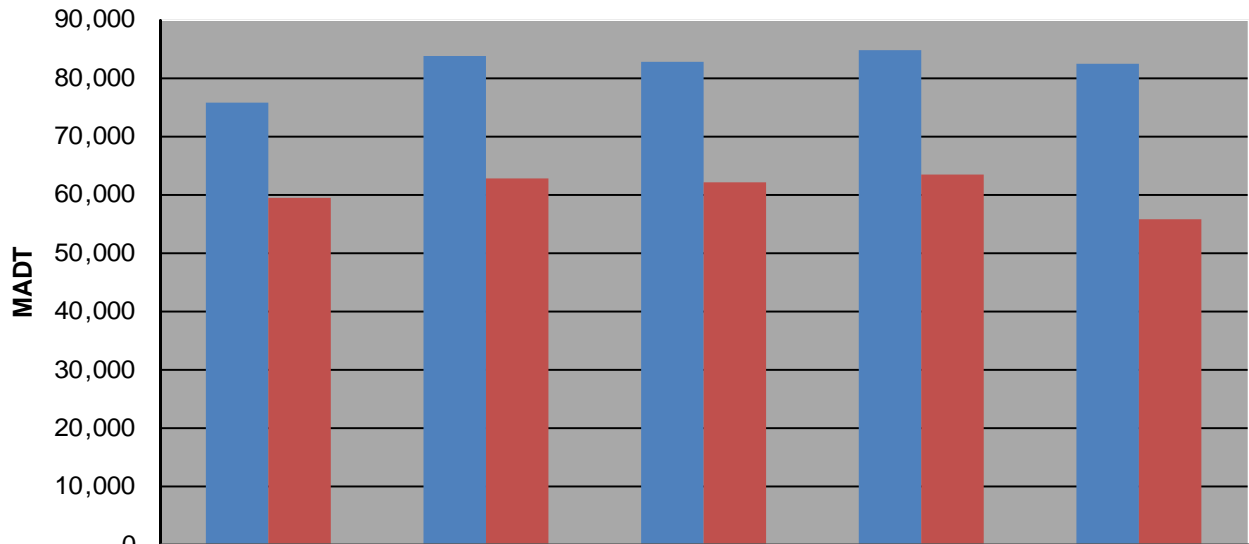
Weekday (WD)/Weekend (WE) Monthly Average Daily Traffic



	Jan	Feb	Mar	Apr	May	Jun	Jul	Aug	Sep	Oct	Nov	Dec
'14 WD	64,214	68,354	72,636	75,598	78,628	84,274	85,226	92,014	87,620	87,094	76,676	77,582
'14 WE	47,458	48,006	56,300	59,390	57,494	68,692	62,098	69,502	67,518	69,556	57,420	60,972
'15 WD	73,020	74,556	77,256	83,746	90,514	91,538	90,672	91,244	67,726	85,606	83,410	79,050
'15 WE	53,832	55,416	56,890	62,694	71,362	72,802	67,476	69,208	52,288	65,564	64,174	62,518
'16 WD	74,940	75,714	77,918	82,550	86,174	88,828	86,000	87,224	84,052	84,986	80,204	78,846
'16 WE	54,950	58,186	59,722	62,198	66,996	72,386	66,972	65,980	64,126	65,218	60,632	53,538
'17 WD	72,942	76,874	78,620	84,642	87,944	91,702	88,024	90,822	88,124	87,544	83,550	60,212
'17 WE	57,022	58,720	58,786	63,486	66,820	72,766	69,018	70,274	68,336	67,344	62,086	55,460
'18 WD	73,436	77,840	78,510	82,304								
'18 WE	57,268	54,776	59,132	55,636								

Note: 'Weekday' defined as Monday-Friday, 'Weekend' defined as Saturday-Sunday

Weekday/Weekend Monthly Average Daily Traffic ('14-'18)



	Apr-14	Apr-15	Apr-16	Apr-17	Apr-18
Weekday	75,598	83,746	82,550	84,642	82,304
Weekend	59,390	62,694	62,198	63,486	55,636