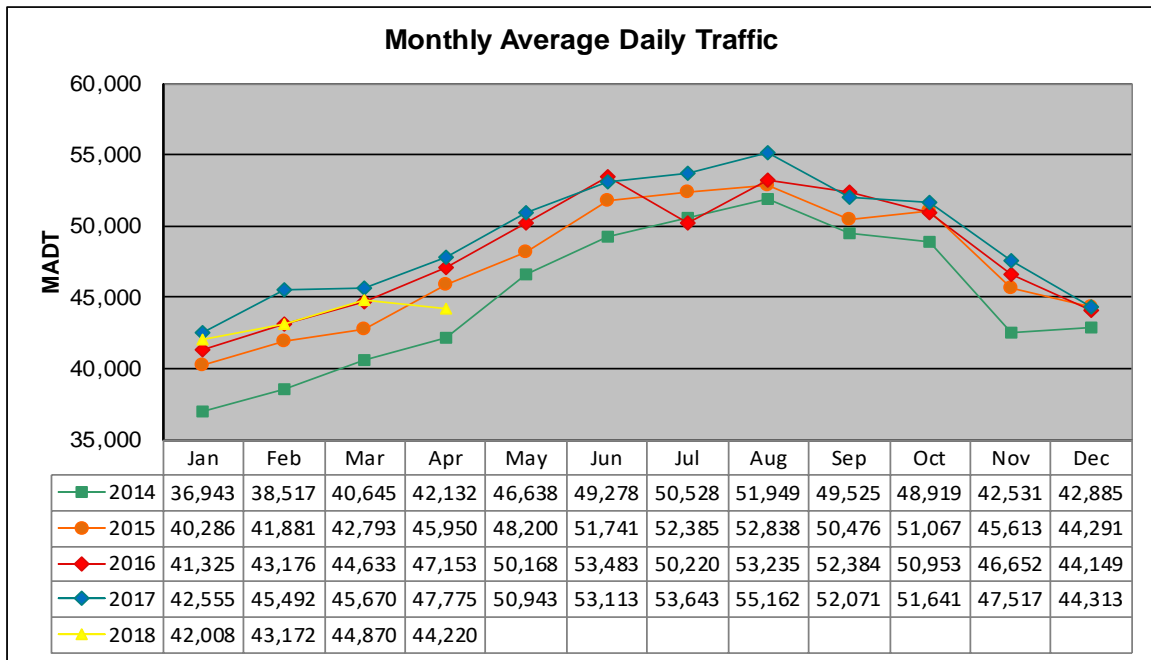


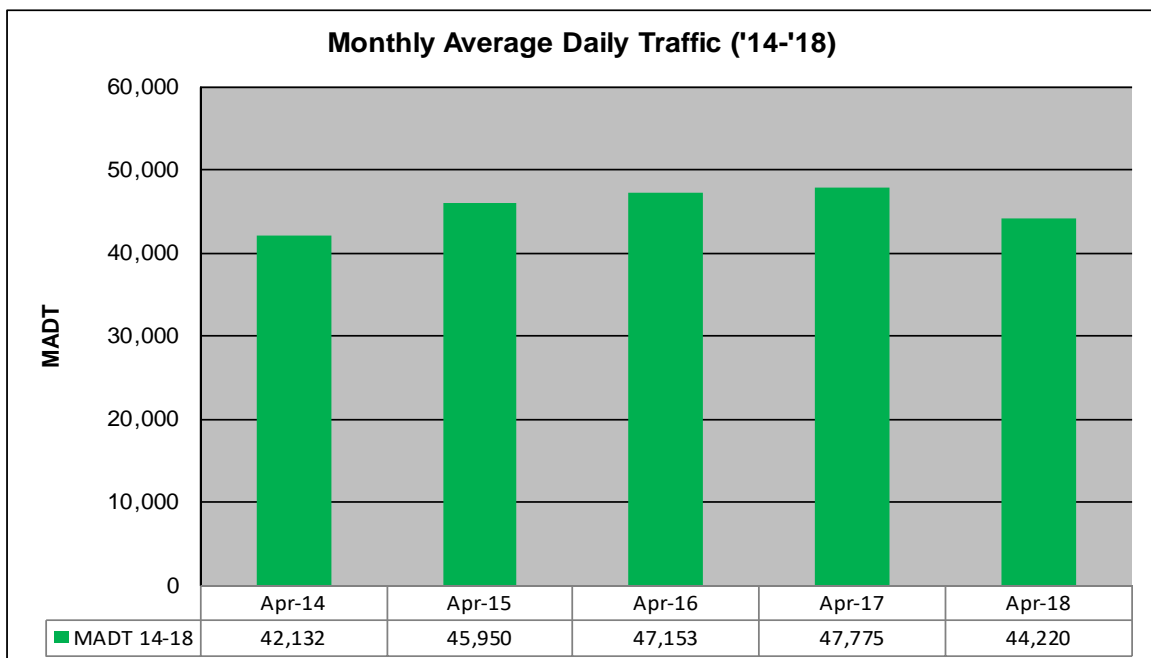
# MONTHLY REPORT, STATION NO. 335 (ATR)

## APRIL 2018

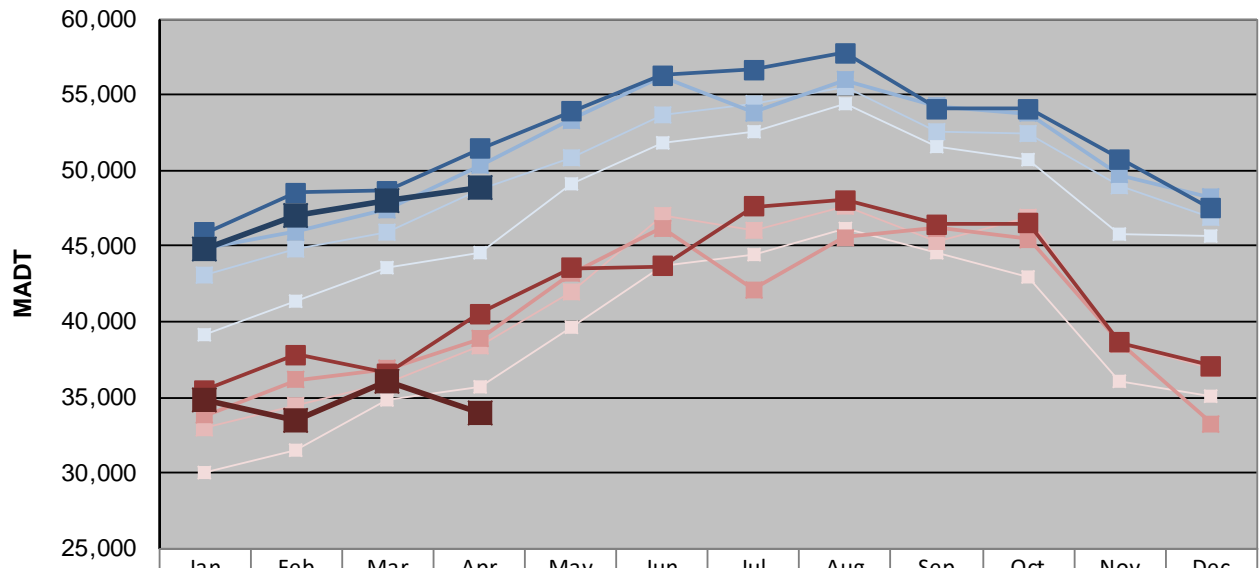
|   |                      |                                     |
|---|----------------------|-------------------------------------|
| Station Measurement: VOLUME/SPEED/CLASS                 |                      |                                     |
| Route: I-35W  | Route Direction: N/S | Lanes: 4                            |
| County: Anoka   |                      | Closest City: Blaine                |
| Functional Class: Urban Principal Arterial - Interstate |                      |                                     |
| Location: W OF CR53 (SUNSET AVE NE) IN BLAINE           |                      |                                     |
| Ref Post: 033+00.752                                    | True Mile: 33.787    | Sequence No. 9853                   |
| <b>Volume: 1,326,587</b>                                |                      | <b>MADT: 44,220</b>                 |
| <b>Weekday (M-F) MADT: 48,828</b>                       |                      | <b>Weekend (Sa-Su) MADT: 33,976</b> |



Note: Decrease in traffic July 2016 due to construction on I-35W and TH 62



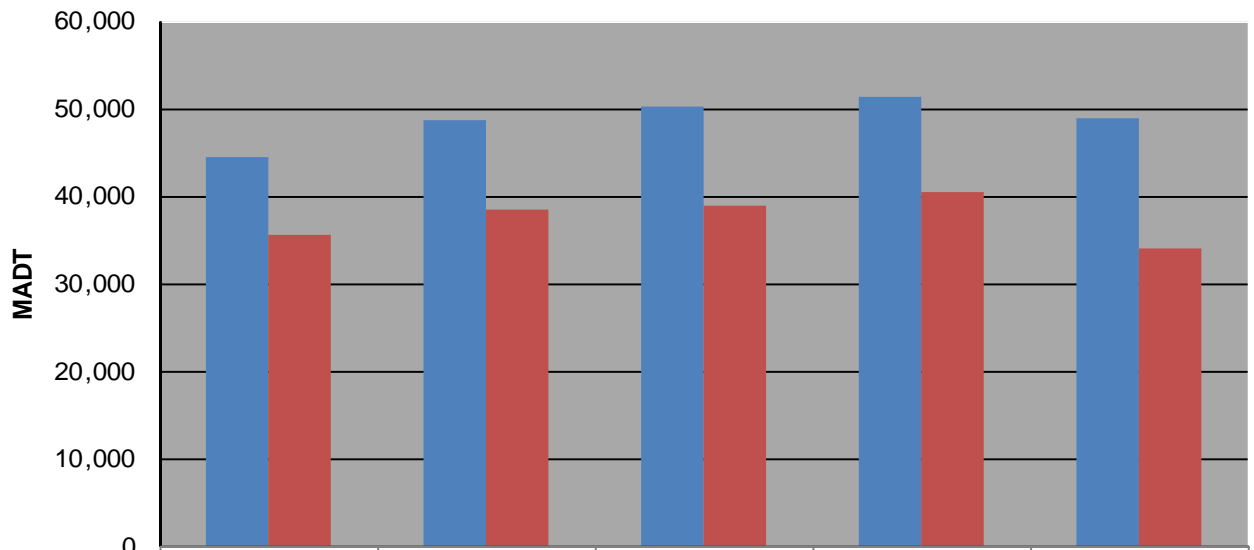
**Weekday (WD)/Weekend (WE) Monthly Average Daily Traffic**



|        | Jan    | Feb    | Mar    | Apr    | May    | Jun    | Jul    | Aug    | Sep    | Oct    | Nov    | Dec    |
|--------|--------|--------|--------|--------|--------|--------|--------|--------|--------|--------|--------|--------|
| '14 WD | 39,104 | 41,316 | 43,512 | 44,520 | 49,118 | 51,830 | 52,588 | 54,452 | 51,564 | 50,764 | 45,774 | 45,710 |
| '14 WE | 30,002 | 31,520 | 34,846 | 35,708 | 39,576 | 43,670 | 44,476 | 46,102 | 44,570 | 42,950 | 36,044 | 35,060 |
| '15 WD | 43,050 | 44,852 | 45,928 | 48,702 | 50,888 | 53,700 | 54,424 | 55,498 | 52,520 | 52,408 | 48,954 | 46,934 |
| '15 WE | 33,012 | 34,450 | 35,906 | 38,414 | 41,924 | 46,988 | 45,994 | 47,578 | 45,306 | 46,878 | 38,506 | 36,894 |
| '16 WD | 44,872 | 45,910 | 47,416 | 50,312 | 53,350 | 56,134 | 53,816 | 55,970 | 54,228 | 53,762 | 49,668 | 48,234 |
| '16 WE | 33,790 | 36,178 | 36,880 | 38,882 | 43,190 | 46,180 | 42,108 | 45,578 | 46,192 | 45,428 | 38,554 | 33,254 |
| '17 WD | 45,850 | 48,556 | 48,620 | 51,392 | 53,884 | 56,288 | 56,632 | 57,762 | 54,044 | 54,074 | 50,768 | 47,494 |
| '17 WE | 35,488 | 37,832 | 36,572 | 40,540 | 43,552 | 43,666 | 47,576 | 48,056 | 46,432 | 46,486 | 38,596 | 37,100 |
| '18 WD | 44,742 | 47,058 | 48,042 | 48,828 |        |        |        |        |        |        |        |        |
| '18 WE | 34,850 | 33,458 | 36,078 | 33,976 |        |        |        |        |        |        |        |        |

Note: 'Weekday' defined as Monday-Friday, 'Weekend' defined as Saturday-Sunday

**Weekday/Weekend Monthly Average Daily Traffic ('14-'18)**



|         | Apr-14 | Apr-15 | Apr-16 | Apr-17 | Apr-18 |
|---------|--------|--------|--------|--------|--------|
| Weekday | 44,520 | 48,702 | 50,312 | 51,392 | 48,828 |
| Weekend | 35,708 | 38,414 | 38,882 | 40,540 | 33,976 |