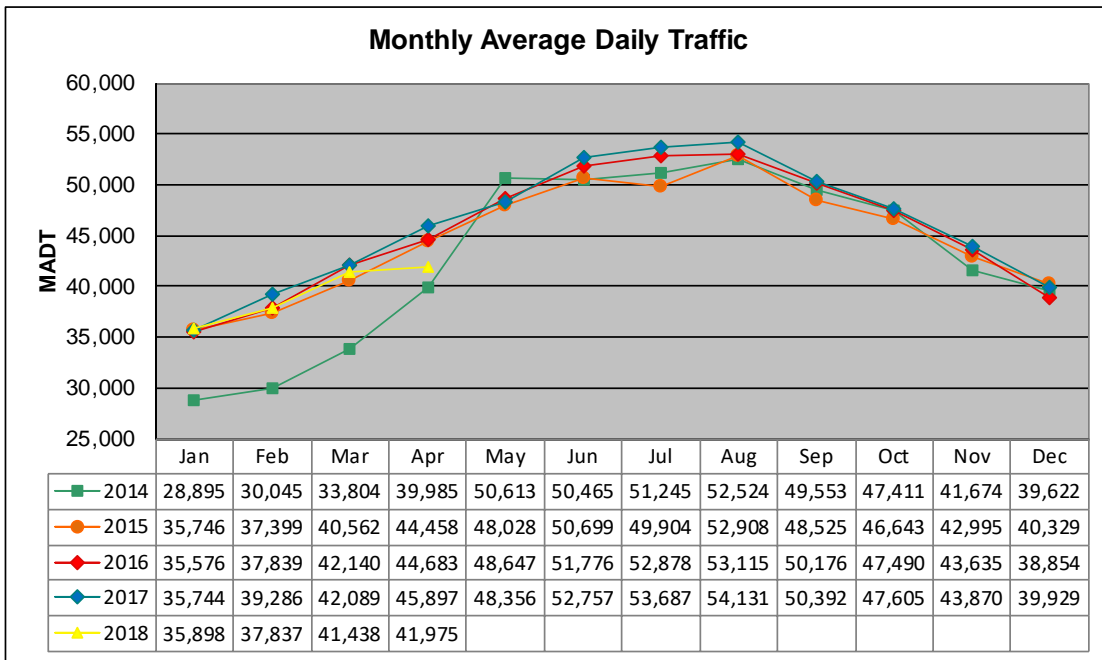


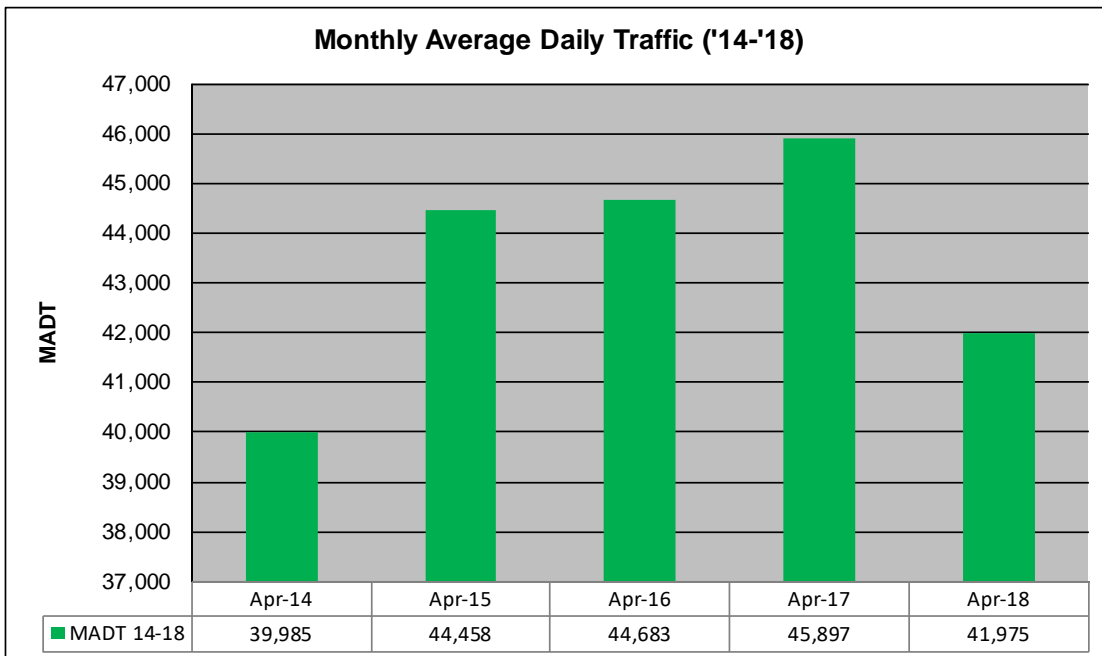
MONTHLY REPORT, STATION NO. 200 (ATR)

APRIL 2018

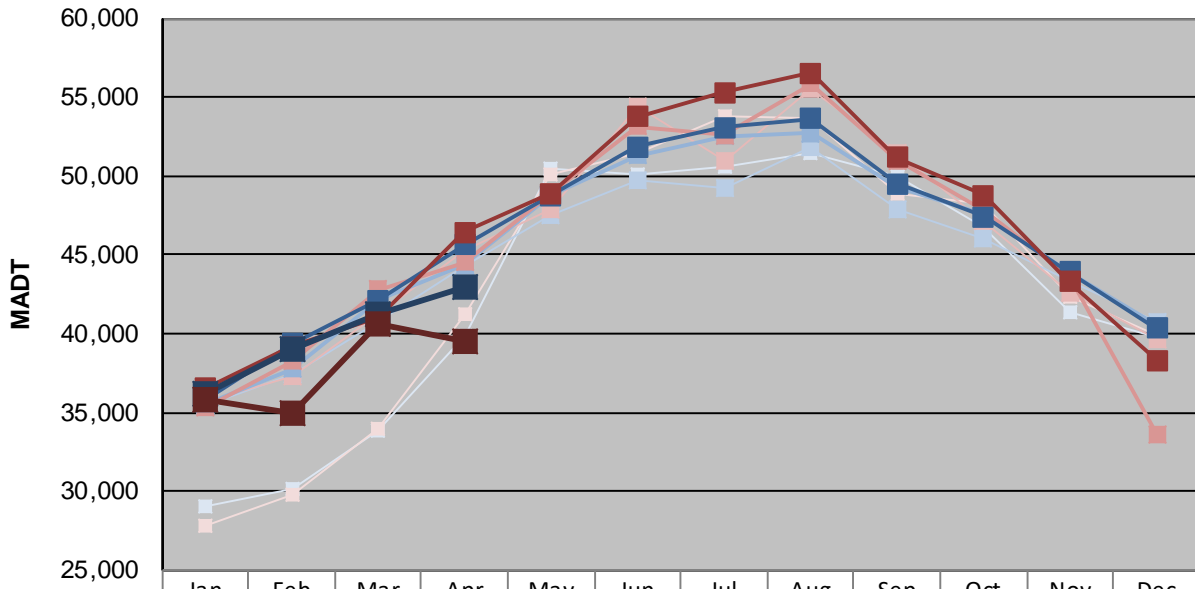
| | | |
|---|----------------------|-------------------------------------|
| Station Measurement: VOLUME/SPEED/CLASS | | |
| Route: I-94 | Route Direction: N/S | Lanes: 4 |
| County: Wright | | Closest City: Clearwater |
| Functional Class: Rural Principal Arterial - Interstate | | |
| Location: 1.1 MI NW OF CSAH8, SE OF CLEARWATER | | |
| Ref Post: 182+00.200 | True Mile: 183.084 | Sequence No. 6781 |
| Volume: 1,259,252 | | MADT: 41,975 |
| Weekday (M-F) MADT: 42,970 | | Weekend (Sa-Su) MADT: 39,538 |



Note: Increase in traffic May/June 2014 due to TH 10 detours



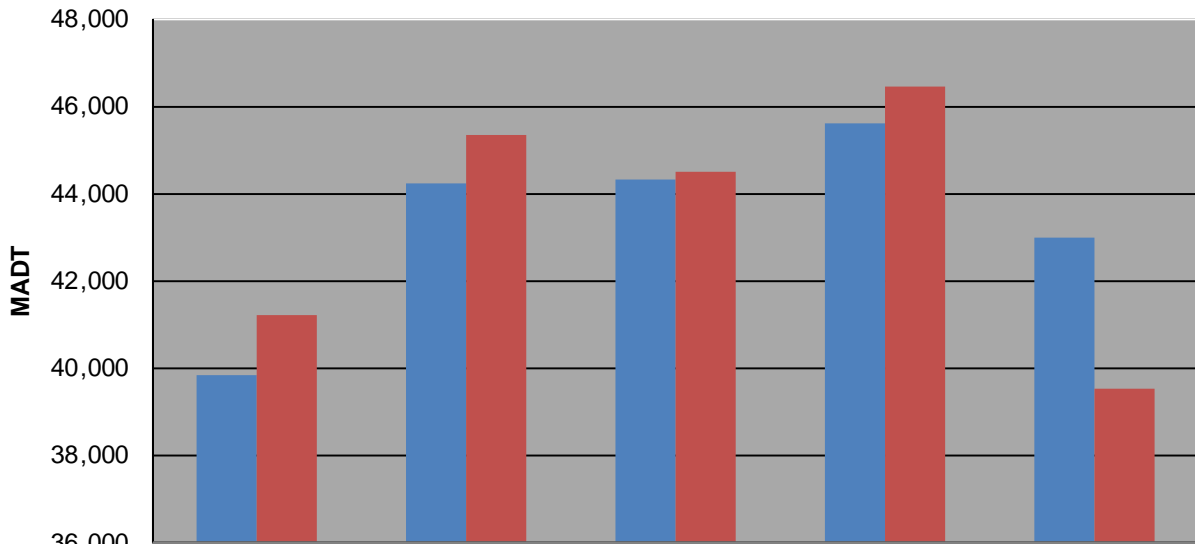
Weekday (WD)/Weekend (WE) Monthly Average Daily Traffic



| | Jan | Feb | Mar | Apr | May | Jun | Jul | Aug | Sep | Oct | Nov | Dec |
|--------|--------|--------|--------|--------|--------|--------|--------|--------|--------|--------|--------|--------|
| '14 WD | 29,012 | 30,138 | 33,842 | 39,852 | 50,424 | 50,064 | 50,530 | 51,426 | 49,996 | 46,806 | 41,352 | 39,774 |
| '14 WE | 27,868 | 29,812 | 34,018 | 41,210 | 50,144 | 51,510 | 53,776 | 53,714 | 48,840 | 48,196 | 42,320 | 39,906 |
| '15 WD | 35,498 | 37,442 | 40,688 | 44,250 | 47,564 | 49,742 | 49,210 | 51,862 | 47,932 | 46,084 | 43,340 | 40,734 |
| '15 WE | 35,676 | 37,292 | 41,262 | 45,350 | 47,880 | 54,406 | 50,974 | 55,484 | 51,408 | 47,098 | 42,646 | 39,656 |
| '16 WD | 35,456 | 37,758 | 42,198 | 44,338 | 48,840 | 51,314 | 52,500 | 52,712 | 49,308 | 47,548 | 43,818 | 40,532 |
| '16 WE | 35,280 | 38,244 | 42,782 | 44,498 | 48,986 | 53,124 | 52,616 | 55,834 | 50,980 | 47,842 | 43,664 | 33,650 |
| '17 WD | 35,712 | 39,342 | 42,140 | 45,626 | 48,772 | 51,866 | 53,058 | 53,632 | 49,506 | 47,416 | 43,924 | 40,366 |
| '17 WE | 36,524 | 39,148 | 41,060 | 46,440 | 48,896 | 53,740 | 55,314 | 56,528 | 51,164 | 48,786 | 43,272 | 38,302 |
| '18 WD | 36,226 | 39,010 | 41,256 | 42,970 | | | | | | | | |
| '18 WE | 35,814 | 34,908 | 40,662 | 39,538 | | | | | | | | |

Note: 'Weekday' defined as Monday-Friday, 'Weekend' defined as Saturday-Sunday

Weekday/Weekend Monthly Average Daily Traffic ('14-'18)



| | Apr-14 | Apr-15 | Apr-16 | Apr-17 | Apr-18 |
|---------|--------|--------|--------|--------|--------|
| Weekday | 39,852 | 44,250 | 44,338 | 45,626 | 42,970 |
| Weekend | 41,210 | 45,350 | 44,498 | 46,440 | 39,538 |