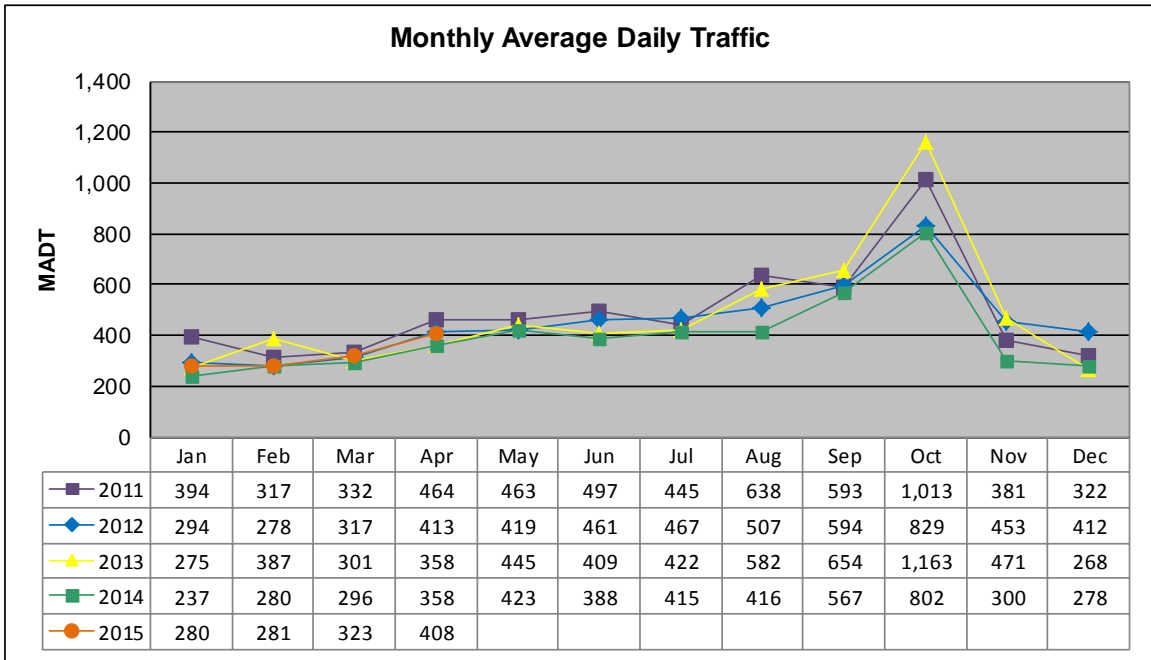


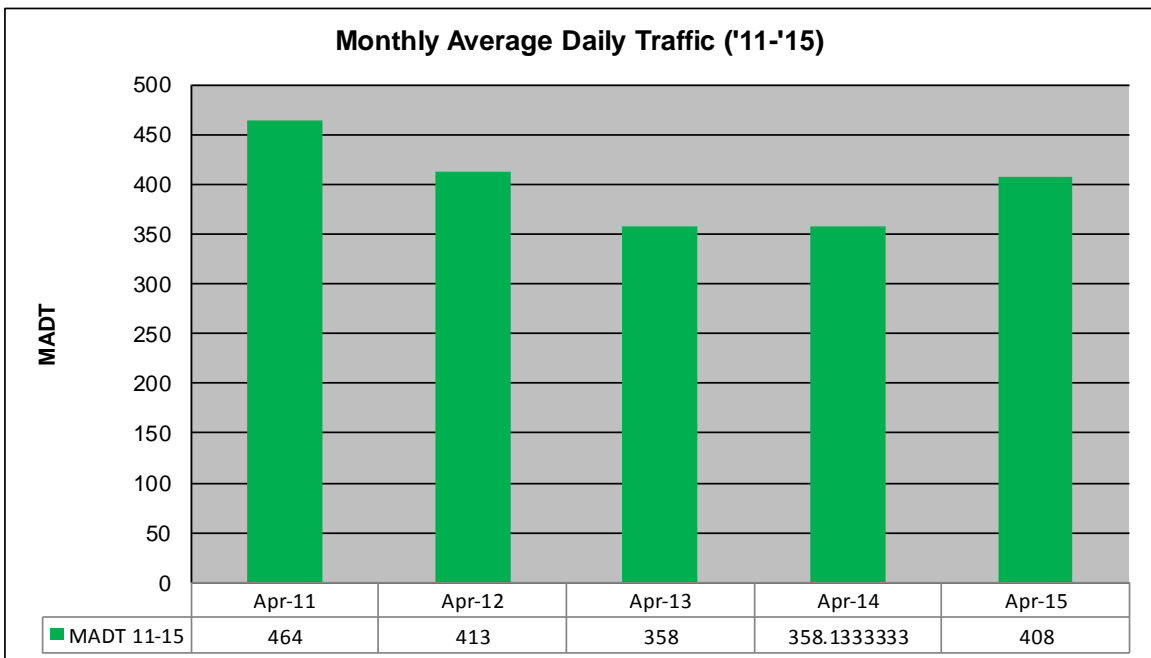
MONTHLY REPORT, STATION NO. 41 (WIM)

APRIL 2015

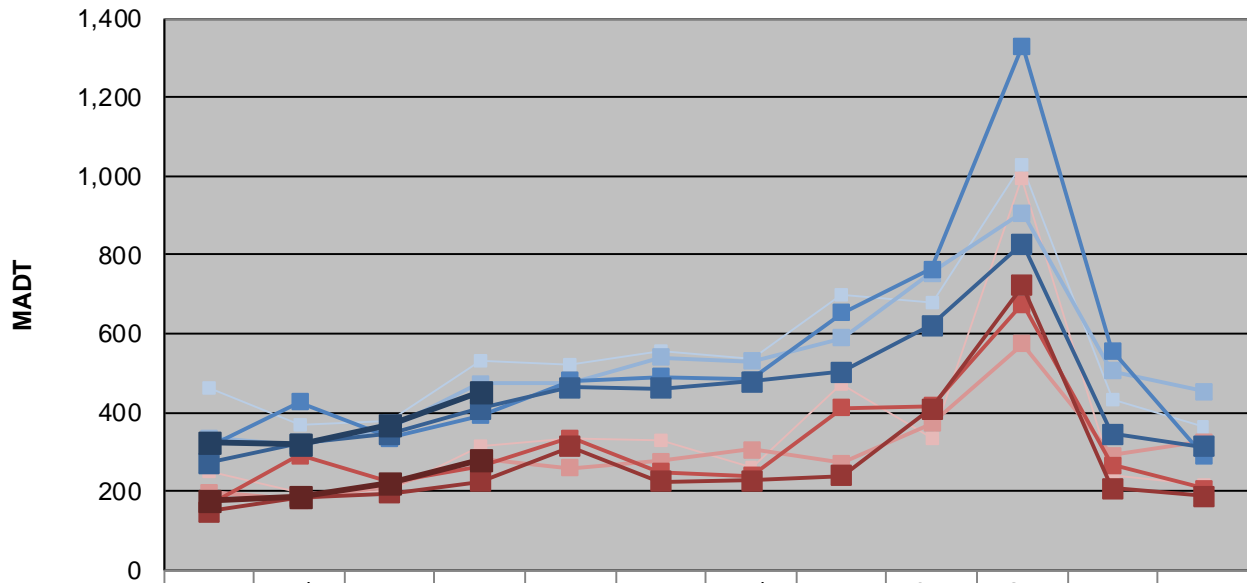
Station Measurement: VOLUME/SPEED/CLASS/WEIGHT		
Route: CSAH 14	Route Direction: N/S	Lanes: 2
County: Polk	Closest City: Crookston	
Functional Class: Rural Major Collector		
Location: 1.3 MI N OF CSAH45, S OF CROOKSTON		
Ref Post: 014+00.850	True Mile: 14.85	Sequence No. 9817
Volume: 12,247		MADT: 408
Weekday (M-F) MADT: 454		Weekend (Sa-Su) MADT: 280



Note: Increase in traffic during Octobers due to beet harvesting



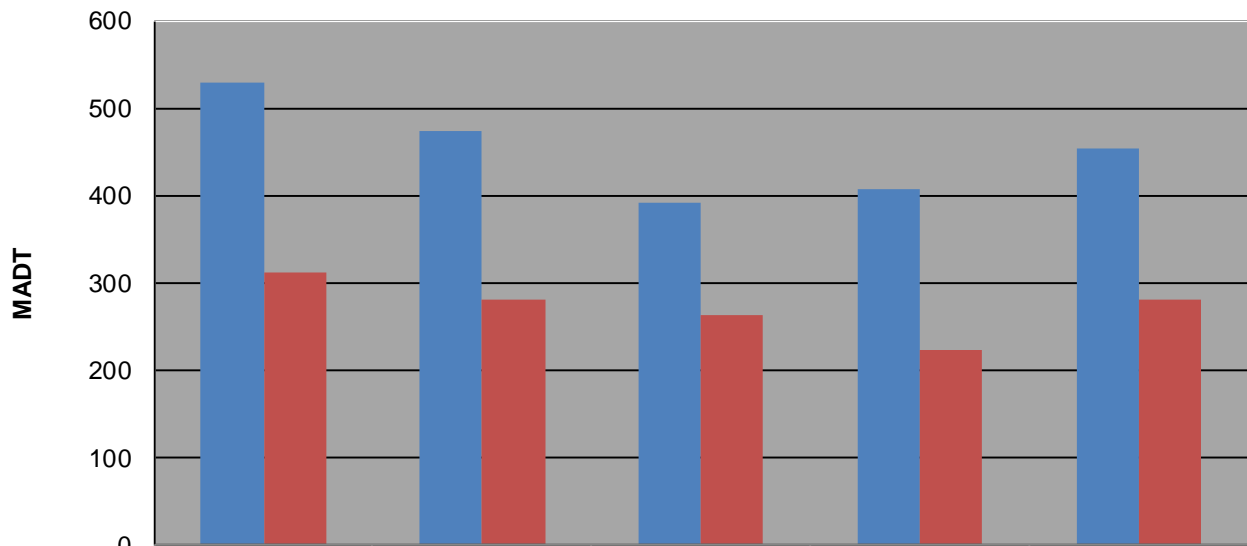
Weekday (WD)/Weekend (WE) Monthly Average Daily Traffic



	Jan	Feb	Mar	Apr	May	Jun	Jul	Aug	Sep	Oct	Nov	Dec
'11 WD	464	366	378	530	520	558	534	698	680	1,030	432	364
'11 WE	252	196	200	312	332	328	260	474	332	992	240	216
'12 WD	334	316	362	474	472	540	530	588	754	906	506	454
'12 WE	198	178	212	280	260	276	306	270	372	574	292	326
'13 WD	312	426	336	392	480	490	482	652	764	1,330	558	292
'13 WE	166	290	222	264	334	250	238	412	416	674	266	208
'14 WD	270	320	346	408	464	460	478	502	622	828	346	312
'14 WE	148	184	196	224	314	224	228	238	408	722	208	188
'15 WD	326	320	368	454								
'15 WE	178	184	220	280								

Note: 'Weekday' defined as Monday-Friday, 'Weekend' defined as Saturday-Sunday

Weekday/Weekend Monthly Average Daily Traffic ('11-'15)



	Apr-11	Apr-12	Apr-13	Apr-14	Apr-15
Weekday	530	474	392	408	454
Weekend	312	280	264	224	280