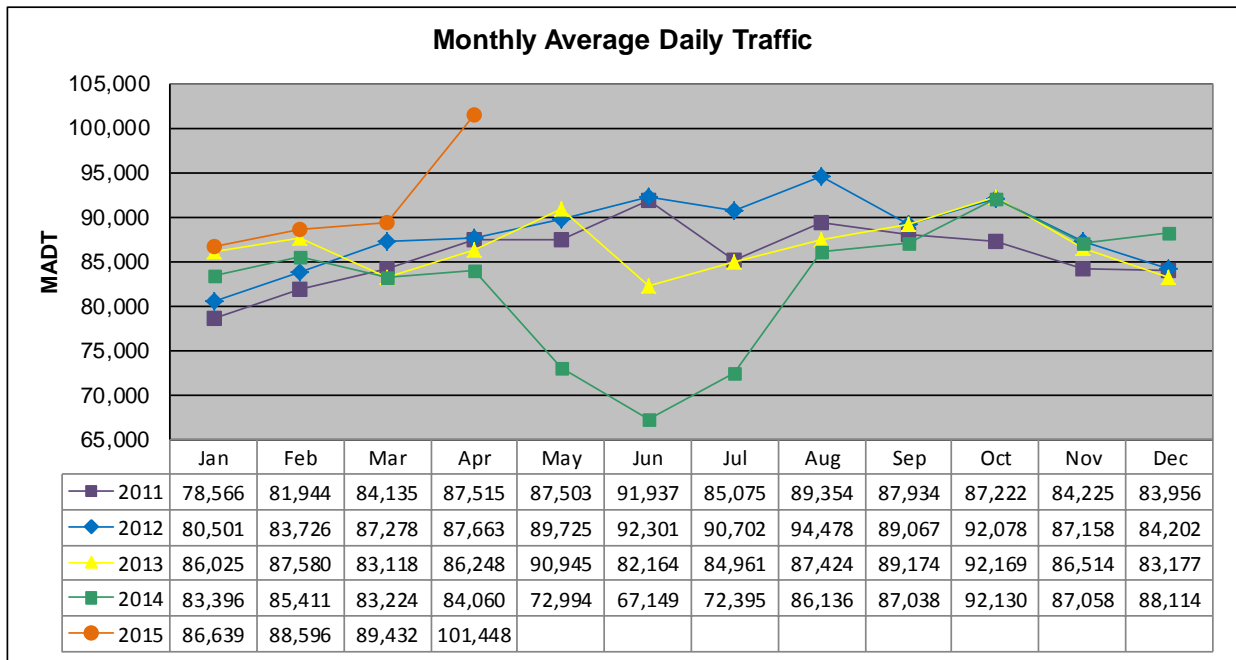


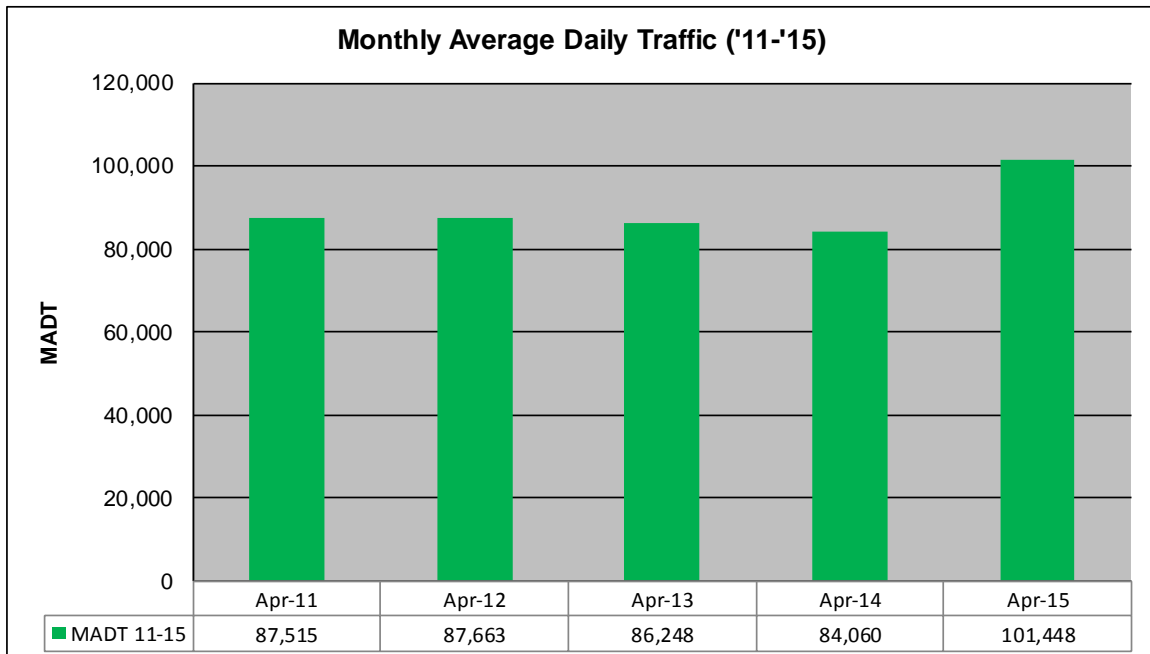
# MONTHLY REPORT, STATION NO. 405 (ATR)

## APRIL 2015

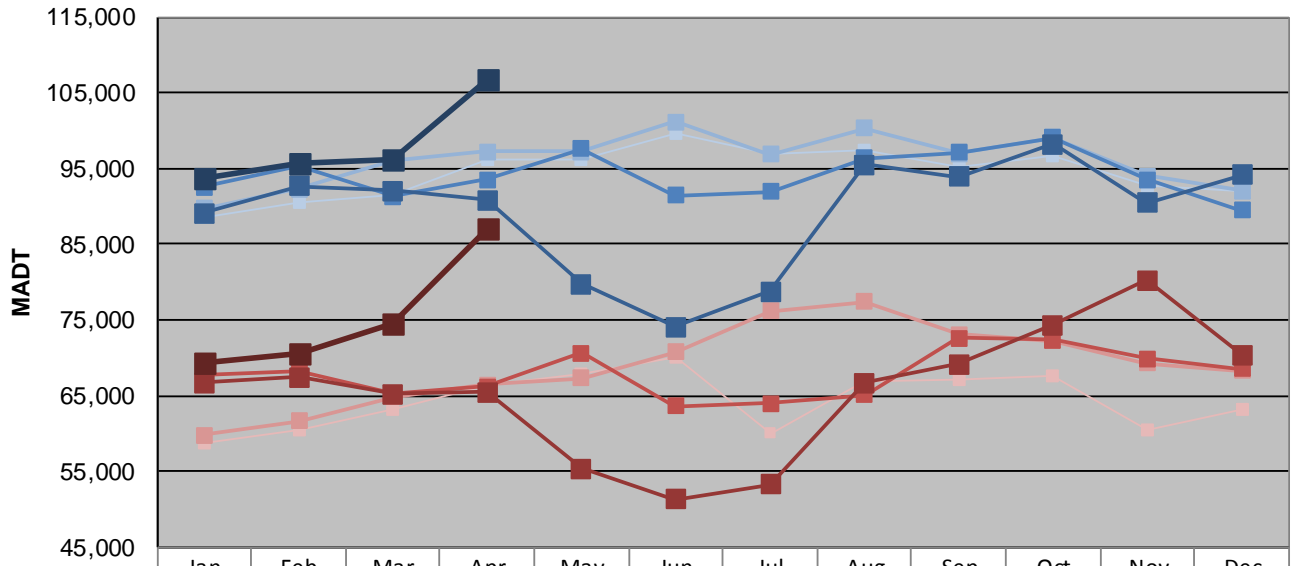
Station Measurement: VOLUME		
Route: TH 169	Route Direction: N/S	Lanes: 4
County: Hennepin		Closest City: St Louis Park
Functional Class: Urban Principal Arterial - Other Freeways or Expressways		
Location: N OF MSAS296 (CEDAR LAKE RD) IN ST LOUIS PARK		
Ref Post: 128+00.870	True Mile: 126.71	Sequence No. 9883
<b>Volume: 3,043,445</b>		<b>MADT: 101,448</b>
<b>Weekday (M-F) MADT: 106,676</b>		<b>Weekend (Sa-Su) MADT: 87,124</b>



Note: Decrease in traffic June to August 2013 and May to July 2014 due to construction on TH 169... Increase in traffic April 2015 due to detour from TH 100



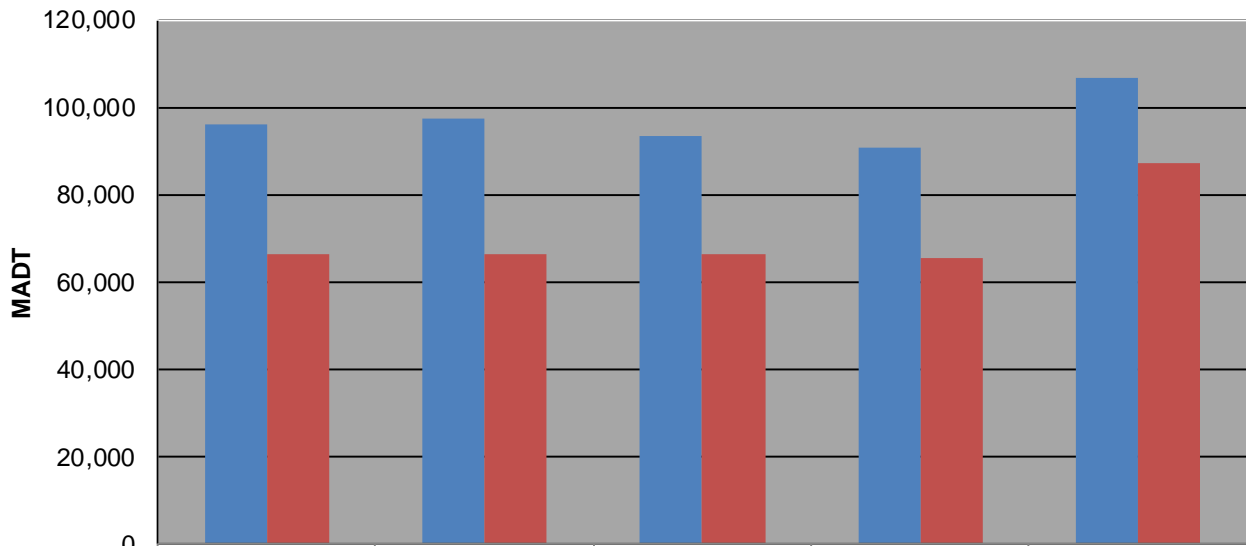
### Weekday (WD)/Weekend (WE) Monthly Average Daily Traffic



	Jan	Feb	Mar	Apr	May	Jun	Jul	Aug	Sep	Oct	Nov	Dec
'11 WD	88,434	90,560	91,470	96,166	96,254	99,718	96,888	97,362	95,130	96,786	92,618	91,922
'11 WE	58,664	60,376	63,262	66,348	67,768	70,182	60,090	66,796	67,230	67,548	60,464	63,144
'12 WD	89,714	92,288	95,978	97,246	97,256	101,148	96,822	100,274	97,030	99,116	94,060	92,002
'12 WE	59,788	61,630	64,860	66,394	67,284	70,722	76,130	77,458	73,144	72,218	69,248	68,238
'13 WD	92,596	95,332	91,314	93,474	97,552	91,436	91,964	96,318	97,086	99,082	93,484	89,416
'13 WE	67,682	68,204	65,260	66,224	70,580	63,622	63,984	65,062	72,598	72,330	69,892	68,544
'14 WD	89,146	92,618	92,010	90,872	79,712	74,122	78,754	95,444	93,860	98,234	90,472	94,126
'14 WE	66,634	67,396	65,258	65,418	55,340	51,354	53,202	66,702	69,192	74,266	80,232	70,394
'15 WD	93,690	95,796	96,240	106,676								
'15 WE	69,256	70,598	74,480	87,124								

Note: 'Weekday' defined as Monday-Friday, 'Weekend' defined as Saturday-Sunday

### Weekday/Weekend Monthly Average Daily Traffic ('11-'15)



	Apr-11	Apr-12	Apr-13	Apr-14	Apr-15
Weekday	96,166	97,246	93,474	90,872	106,676
Weekend	66,348	66,394	66,224	65,418	87,124