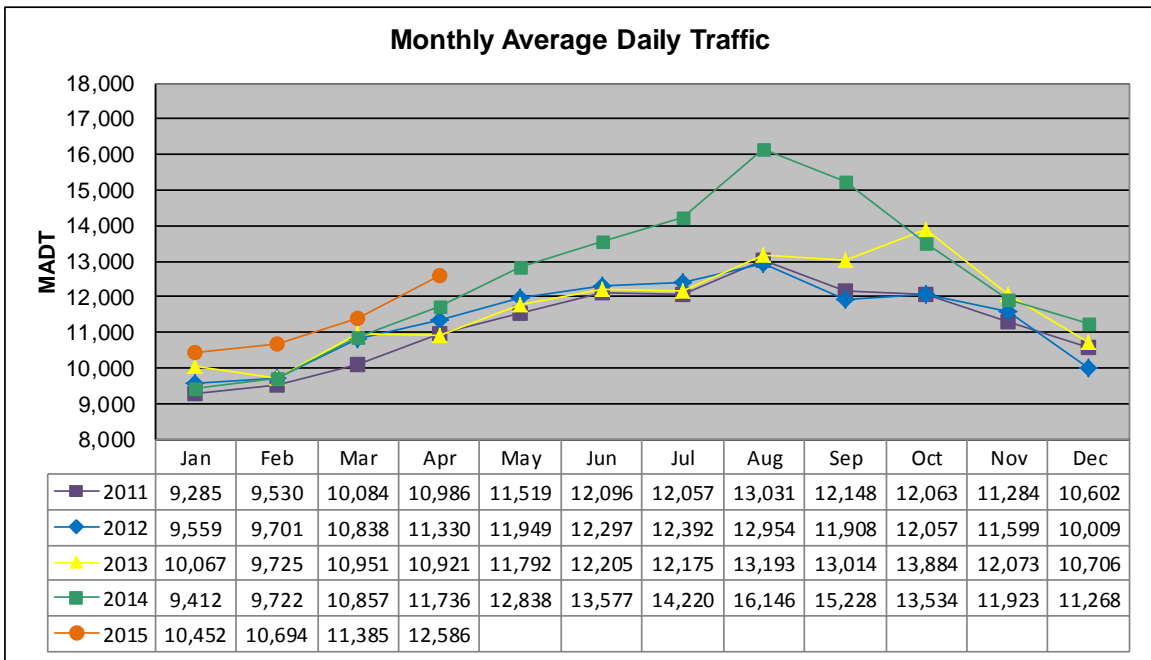


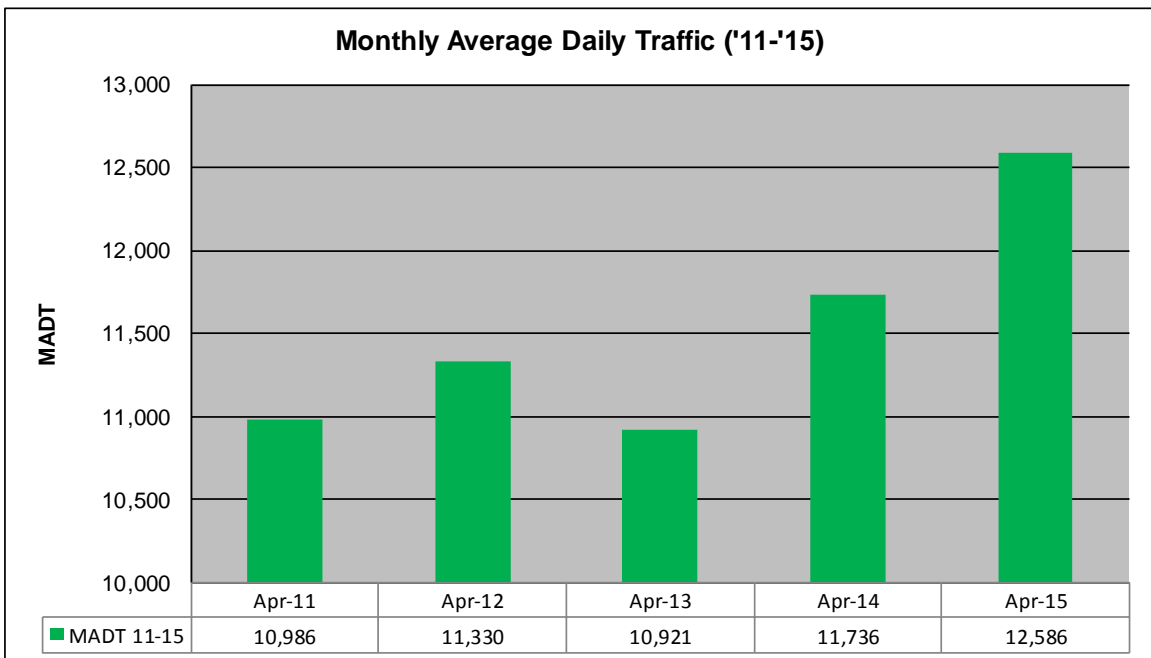
MONTHLY REPORT, STATION NO. 381 (ATR)

APRIL 2015

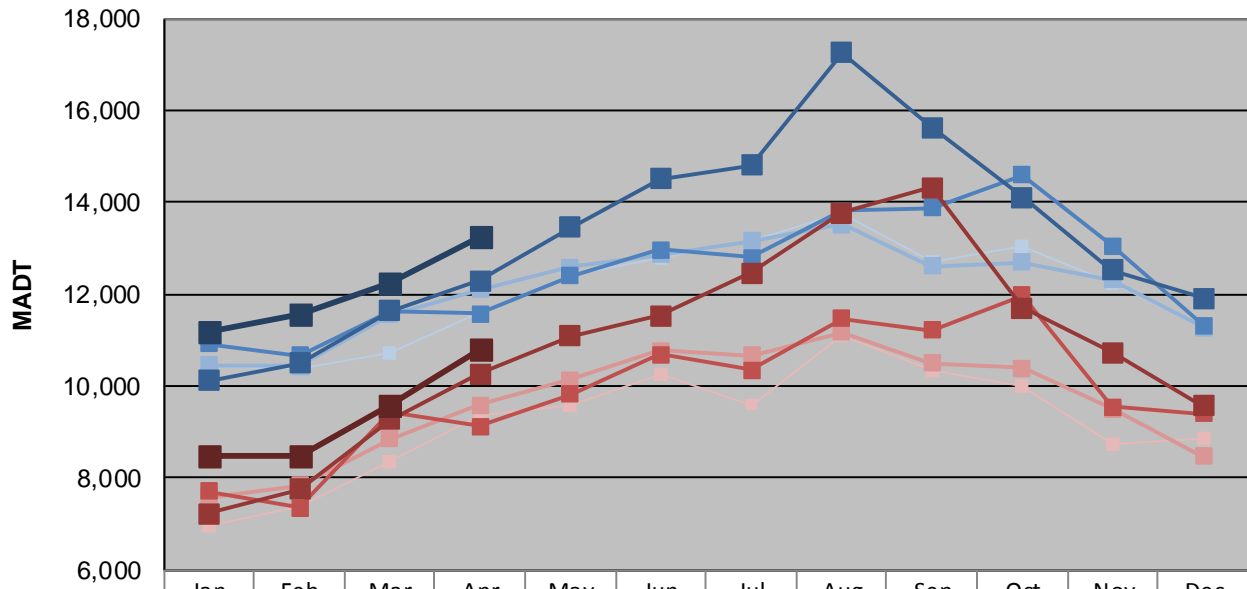
Station Measurement: VOLUME/SPEED/CLASS		
Route: TH 212	Route Direction: E/W	Lanes: 2
County: Carver	Closest City: Cologne	
Functional Class: Rural Principal Arterial - Other		
Location: 1.7 MI W OF CSAH51, W OF COLOGNE		
Ref Post: 133+00.500	True Mile: 133.195	Sequence No. 9870
Volume: 377,591		MADT: 12,586
Weekday (M-F) MADT: 13,246		Weekend (Sa-Su) MADT: 10,786



Note: Increase in traffic October 2013 and June to October 2014 due to detour from TH 5



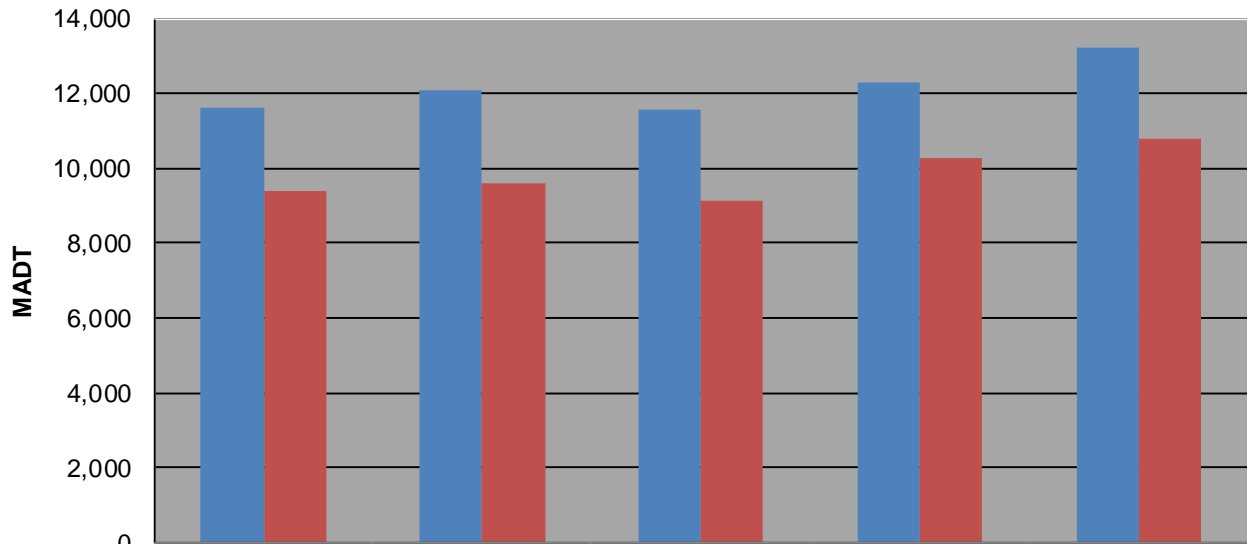
Weekday (WD)/Weekend (WE) Monthly Average Daily Traffic



	Jan	Feb	Mar	Apr	May	Jun	Jul	Aug	Sep	Oct	Nov	Dec
'11 WD	10,436	10,380	10,708	11,620	12,398	12,770	13,178	13,740	12,712	13,054	12,224	11,264
'11 WE	6,946	7,376	8,360	9,372	9,582	10,258	9,596	11,112	10,326	10,018	8,732	8,848
'12 WD	10,452	10,438	11,562	12,102	12,578	12,862	13,156	13,522	12,612	12,704	12,312	11,278
'12 WE	7,588	7,834	8,858	9,598	10,132	10,764	10,670	11,184	10,498	10,392	9,512	8,472
'13 WD	10,914	10,674	11,616	11,578	12,402	12,966	12,794	13,820	13,866	14,598	13,062	11,318
'13 WE	7,714	7,354	9,434	9,136	9,818	10,682	10,348	11,462	11,226	11,984	9,558	9,400
'14 WD	10,114	10,508	11,638	12,294	13,460	14,506	14,804	17,262	15,618	14,116	12,518	11,904
'14 WE	7,224	7,756	9,280	10,266	11,084	11,530	12,468	13,772	14,320	11,698	10,736	9,570
'15 WD	11,194	11,582	12,236	13,246								
'15 WE	8,496	8,476	9,580	10,786								

Note: 'Weekday' defined as Monday-Friday, 'Weekend' defined as Saturday-Sunday

Weekday/Weekend Monthly Average Daily Traffic ('11-'15)



	Apr-11	Apr-12	Apr-13	Apr-14	Apr-15
Weekday	11,620	12,102	11,578	12,294	13,246
Weekend	9,372	9,598	9,136	10,266	10,786