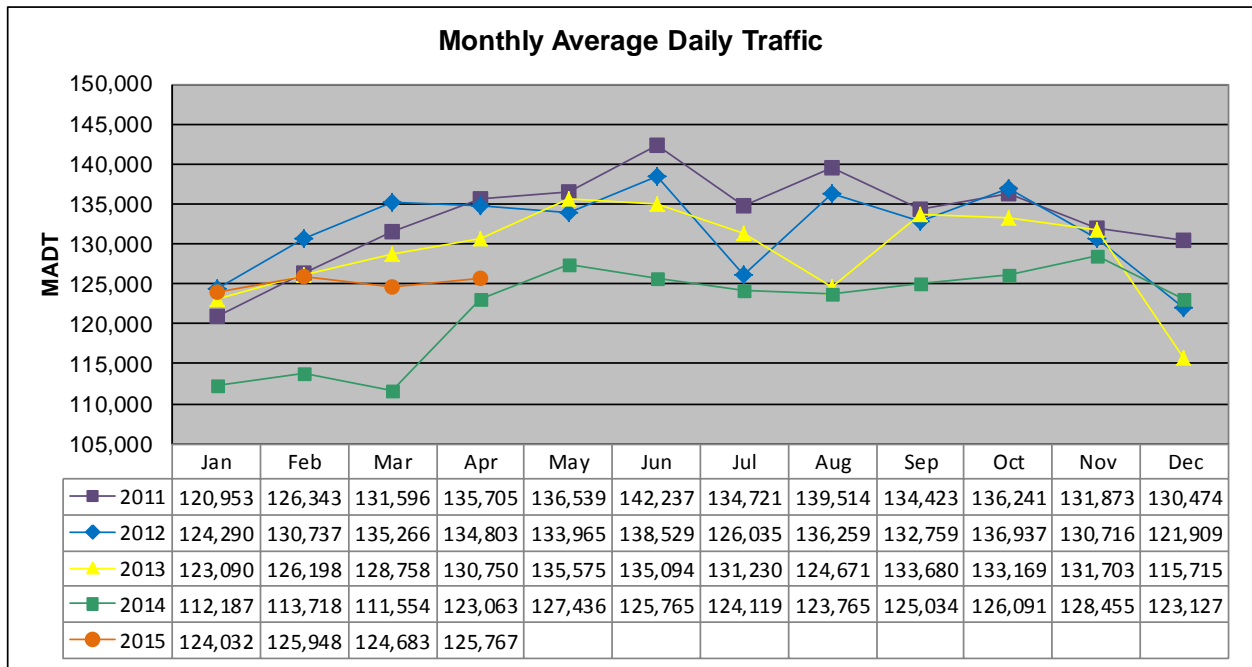


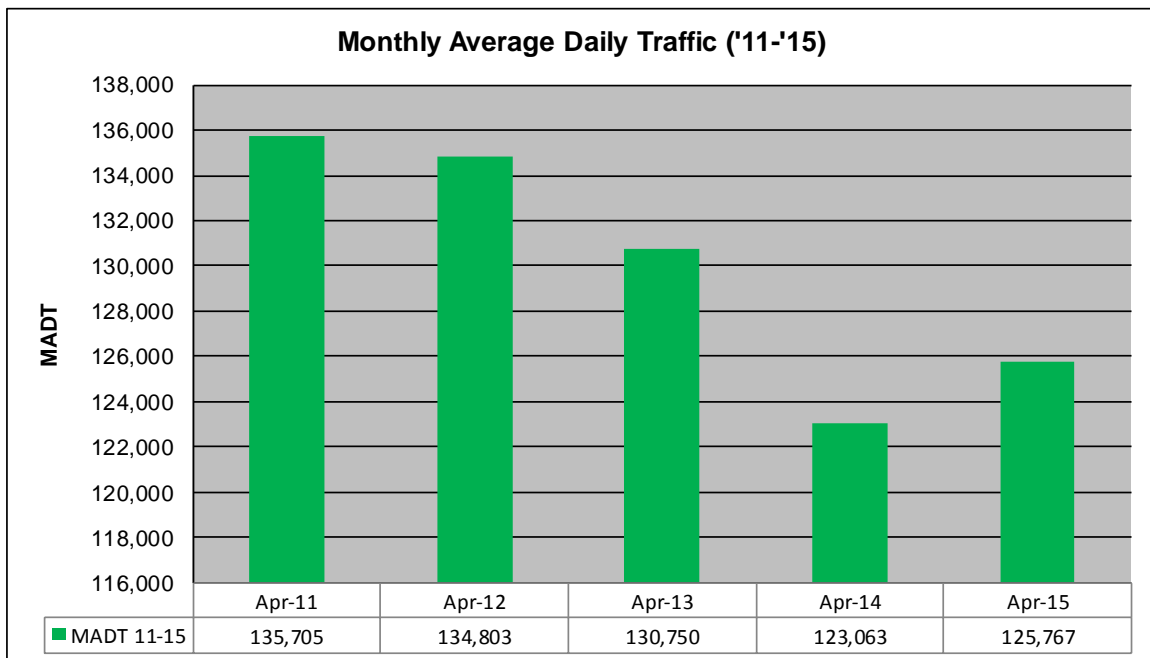
# MONTHLY REPORT, STATION NO. 303 (ATR)

## APRIL 2015

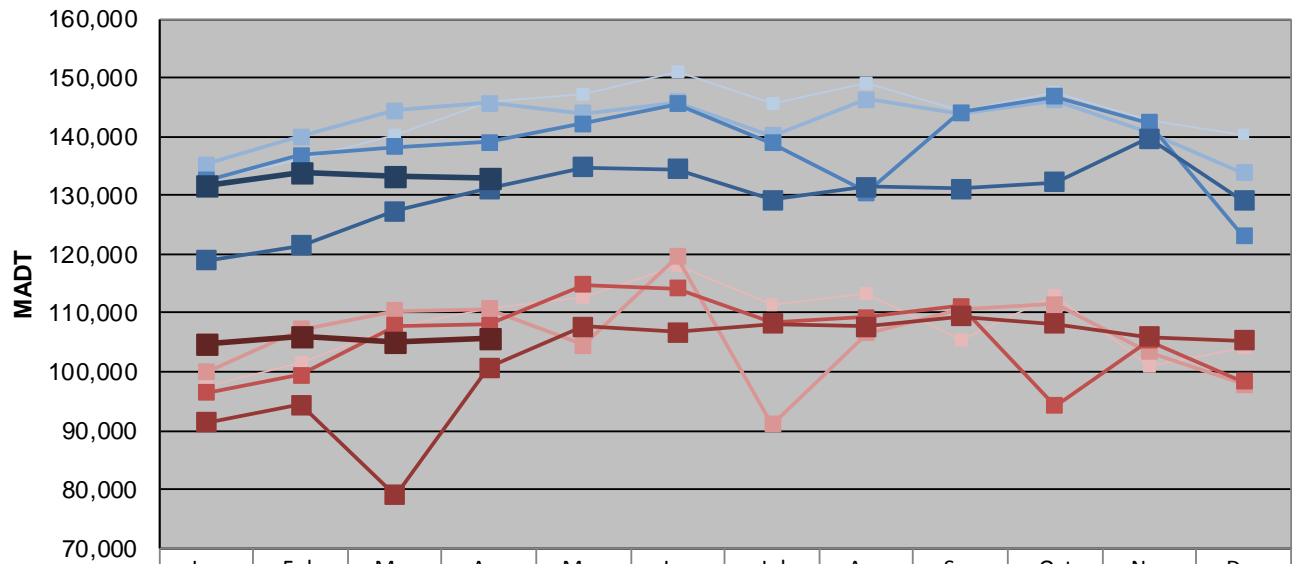
|   |                      |                                      |
|---|----------------------|--------------------------------------|
| <b>Station Measurement: VOLUME</b>                      |                      |                                      |
| Route: I-35E  | Route Direction: N/S | Lanes: 6                             |
| County: Ramsey  |                      | Closest City: St Paul                |
| Functional Class: Urban Principal Arterial - Interstate |                      |                                      |
| Location: S OF MSAS109 (E ARLINGTON AVE) IN ST PAUL     |                      |                                      |
| Ref Post: 109+00.835                                    | True Mile: 109.893   | Sequence No. 9836                    |
| <b>Volume: 3,773,005</b>                                |                      | <b>MADT: 125,767</b>                 |
| <b>Weekday (M-F) MADT: 133,036</b>                      |                      | <b>Weekend (Sa-Su) MADT: 105,748</b> |



Note: Decrease in traffic July 2012, August 2013, and February/March and July to October 2014 due to construction on I-35E



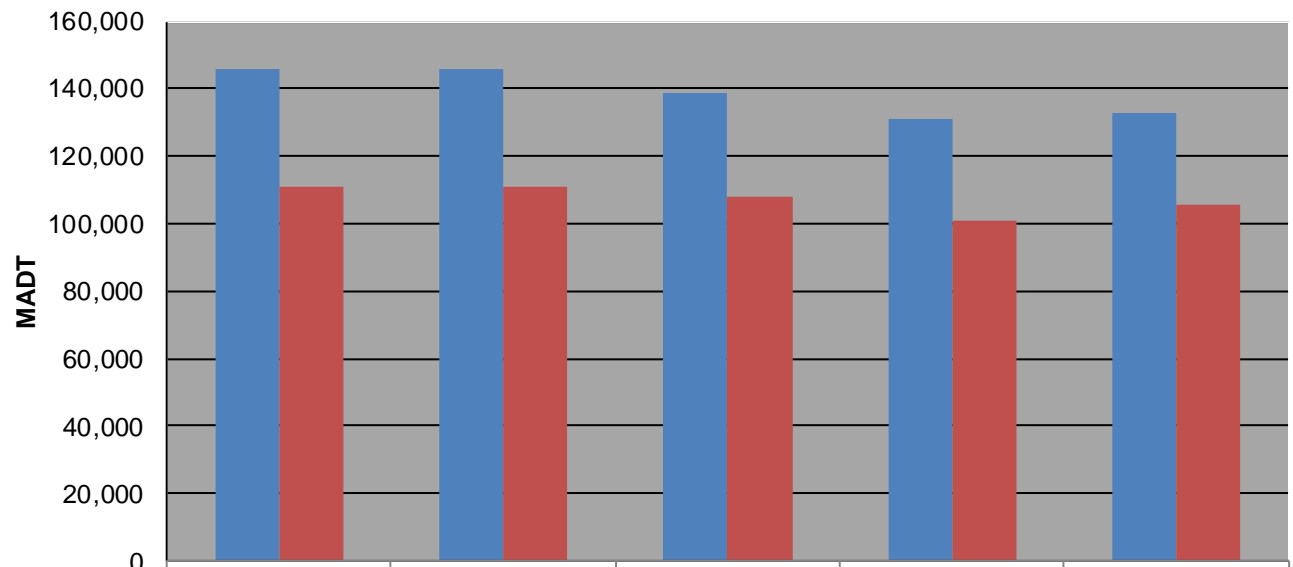
### Weekday (WD)/Weekend (WE) Monthly Average Daily Traffic



|        | Jan     | Feb     | Mar     | Apr     | May     | Jun     | Jul     | Aug     | Sep     | Oct     | Nov     | Dec     |
|--------|---------|---------|---------|---------|---------|---------|---------|---------|---------|---------|---------|---------|
| '11 WD | 132,586 | 136,270 | 140,092 | 145,776 | 147,338 | 150,904 | 145,518 | 148,998 | 144,306 | 147,592 | 142,806 | 140,374 |
| '11 WE | 97,638  | 101,502 | 107,680 | 110,742 | 112,630 | 118,000 | 111,382 | 113,168 | 105,360 | 113,044 | 100,982 | 104,194 |
| '12 WD | 135,318 | 139,948 | 144,506 | 145,768 | 143,978 | 145,906 | 140,202 | 146,268 | 143,884 | 146,156 | 140,582 | 133,864 |
| '12 WE | 99,982  | 107,190 | 110,406 | 110,720 | 104,494 | 119,572 | 91,114  | 106,594 | 110,512 | 111,504 | 103,494 | 97,834  |
| '13 WD | 132,498 | 136,886 | 138,196 | 139,018 | 142,236 | 145,560 | 138,878 | 130,570 | 144,116 | 146,820 | 142,392 | 123,084 |
| '13 WE | 96,464  | 99,480  | 107,902 | 107,950 | 114,782 | 114,162 | 108,540 | 109,280 | 111,160 | 94,312  | 105,278 | 98,366  |
| '14 WD | 118,890 | 121,424 | 127,318 | 131,128 | 134,758 | 134,460 | 129,276 | 131,398 | 131,096 | 132,234 | 139,704 | 129,116 |
| '14 WE | 91,462  | 94,454  | 78,988  | 100,772 | 107,710 | 106,824 | 108,206 | 107,634 | 109,442 | 108,132 | 105,956 | 105,260 |
| '15 WD | 131,588 | 133,970 | 133,406 | 133,036 |         |         |         |         |         |         |         |         |
| '15 WE | 104,916 | 105,896 | 105,218 | 105,748 |         |         |         |         |         |         |         |         |

Note: 'Weekday' defined as Monday-Friday, 'Weekend' defined as Saturday-Sunday

### Weekday/Weekend Monthly Average Daily Traffic ('11-'15)



|         | Apr-11  | Apr-12  | Apr-13  | Apr-14  | Apr-15  |
|---------|---------|---------|---------|---------|---------|
| Weekday | 145,776 | 145,768 | 139,018 | 131,128 | 133,036 |
| Weekend | 110,742 | 110,720 | 107,950 | 100,772 | 105,748 |